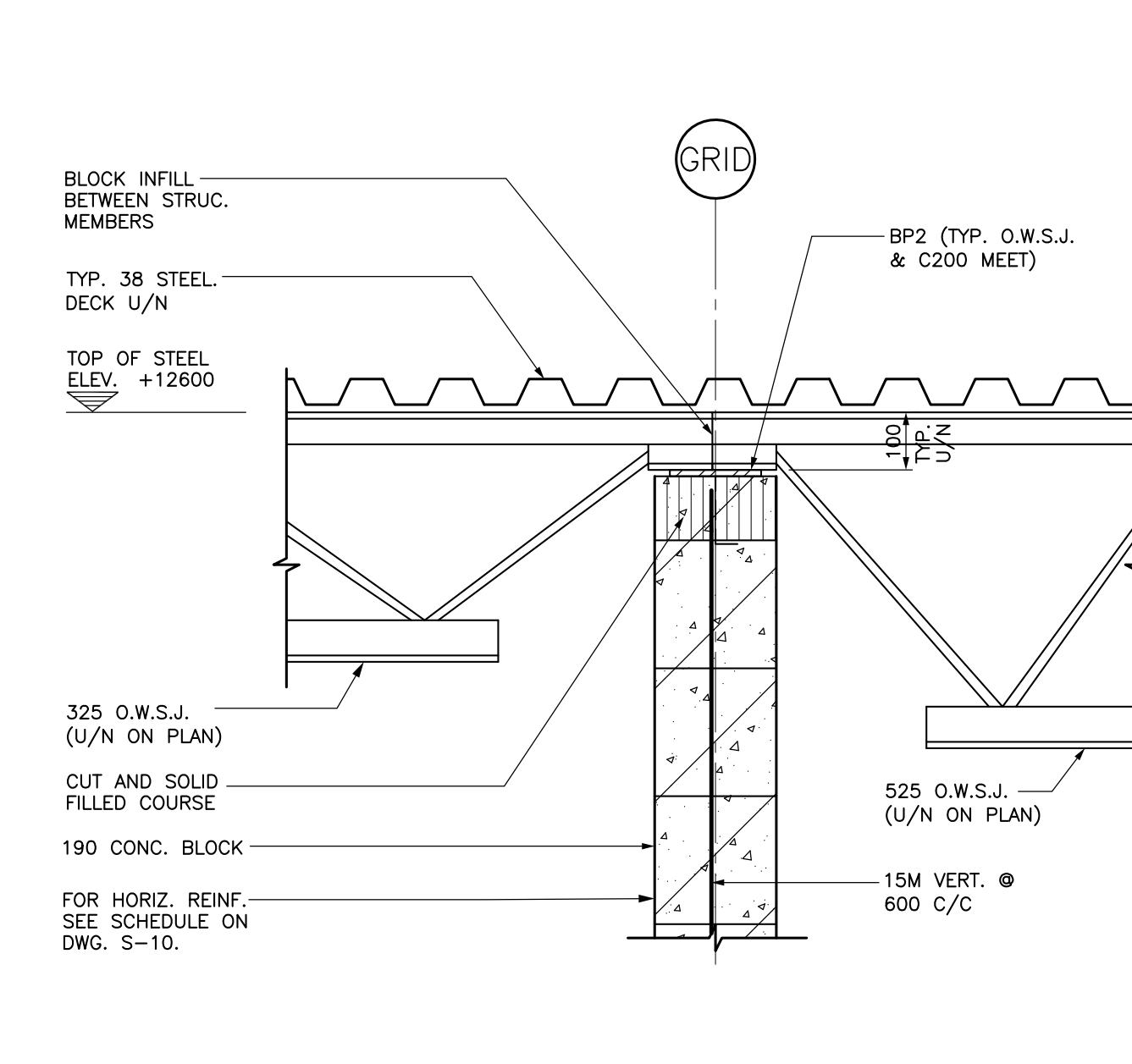
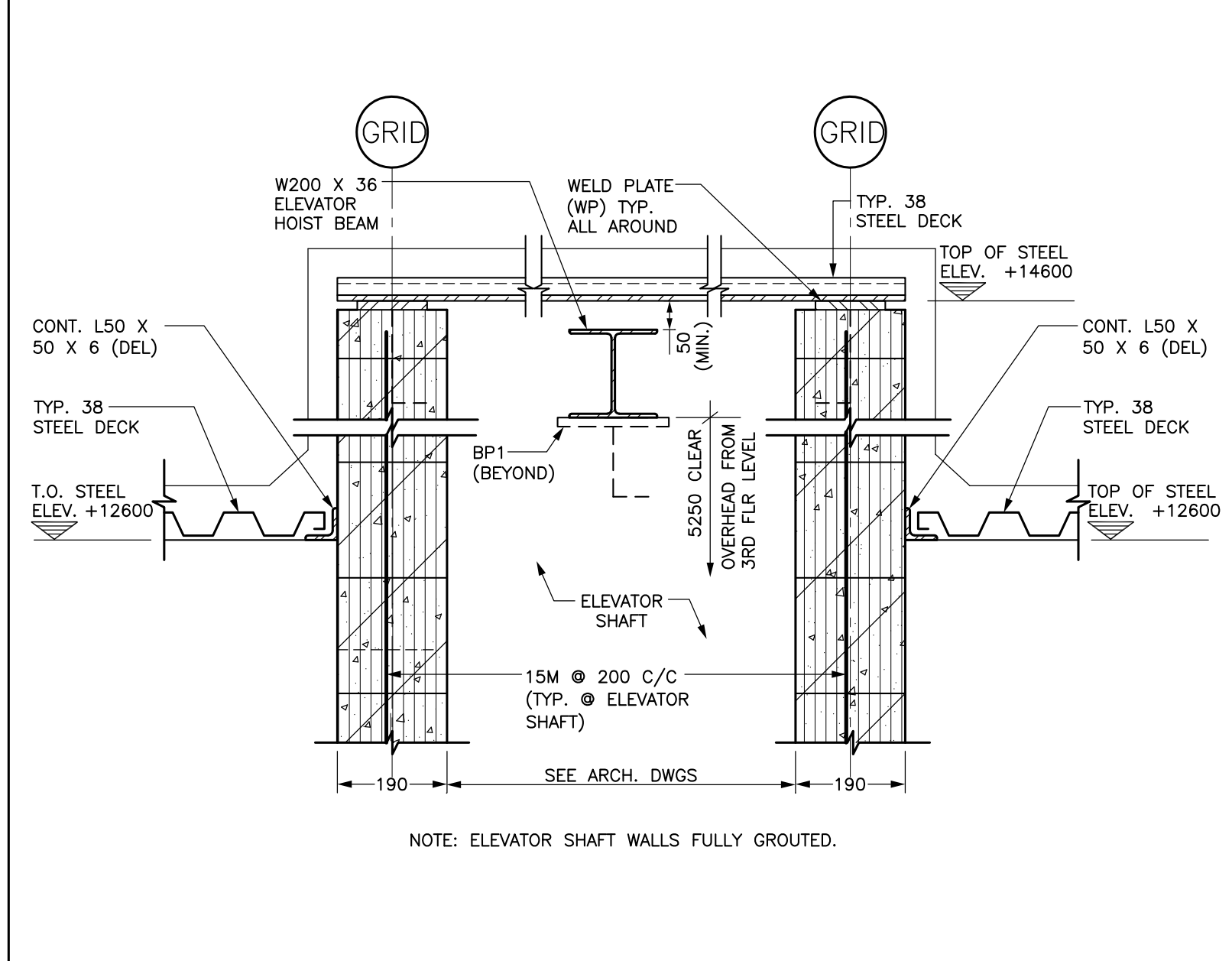


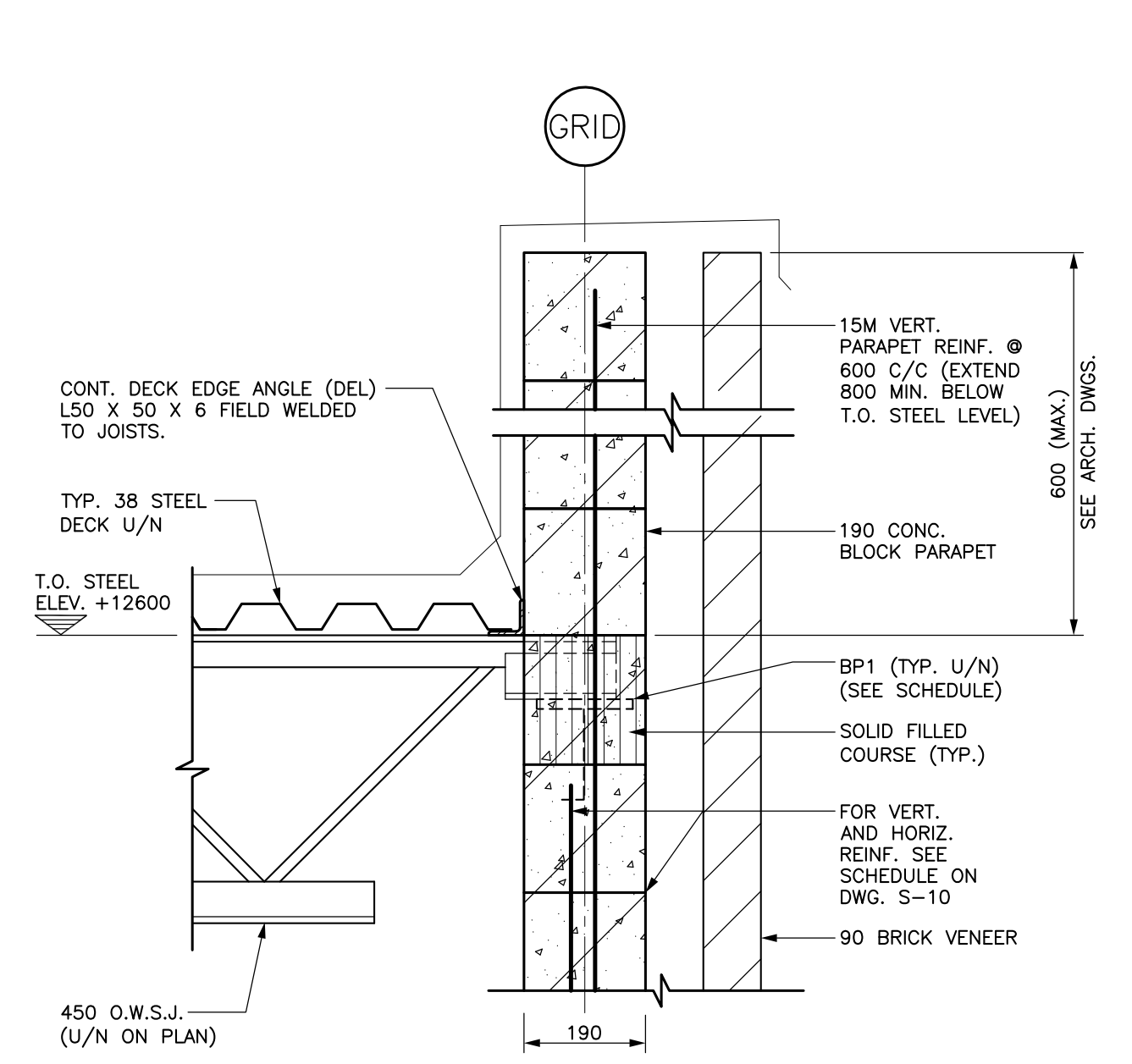
SECTION 1  
SCALE: 1:10



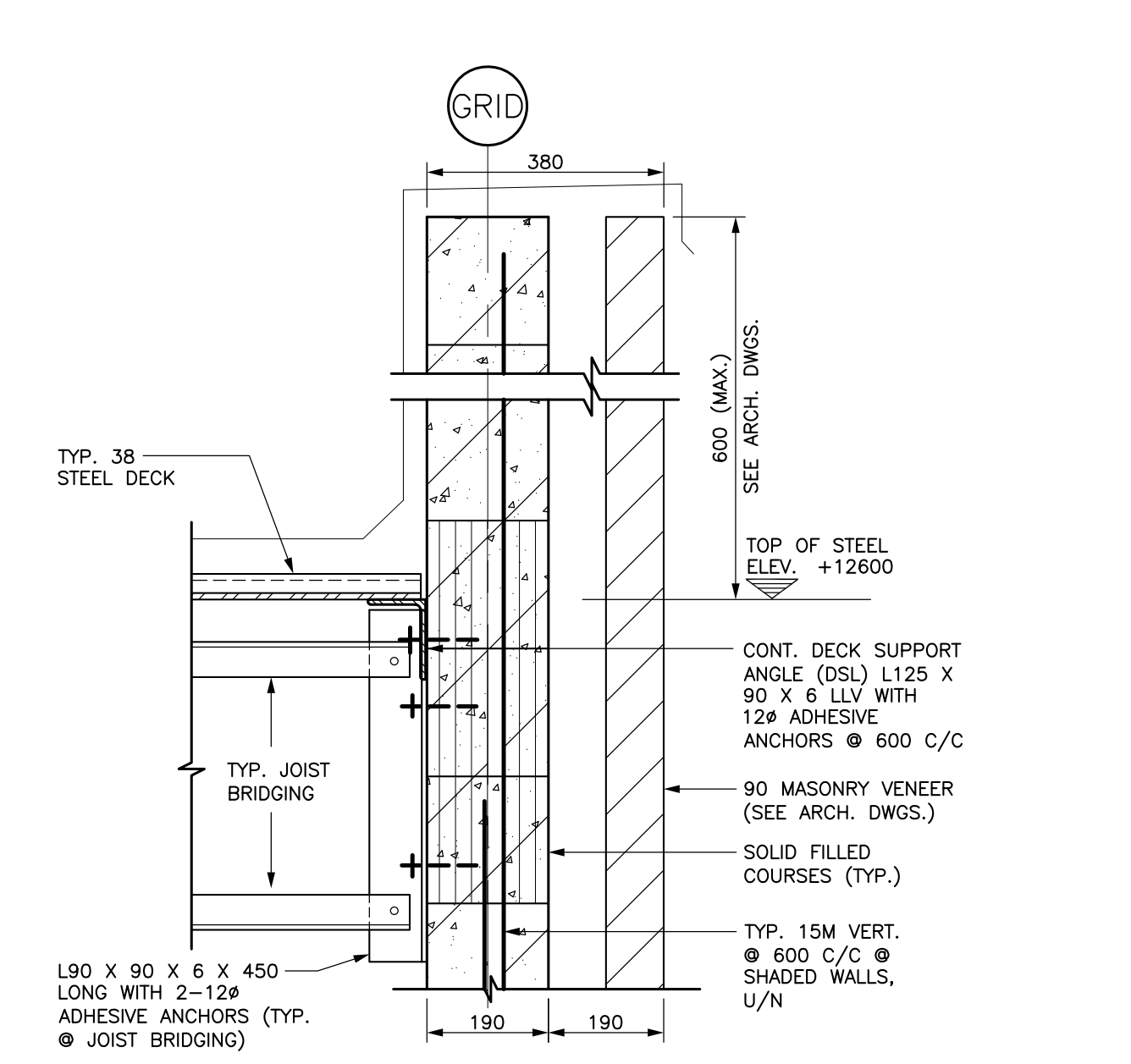
SECTION 2  
SCALE: 1:10



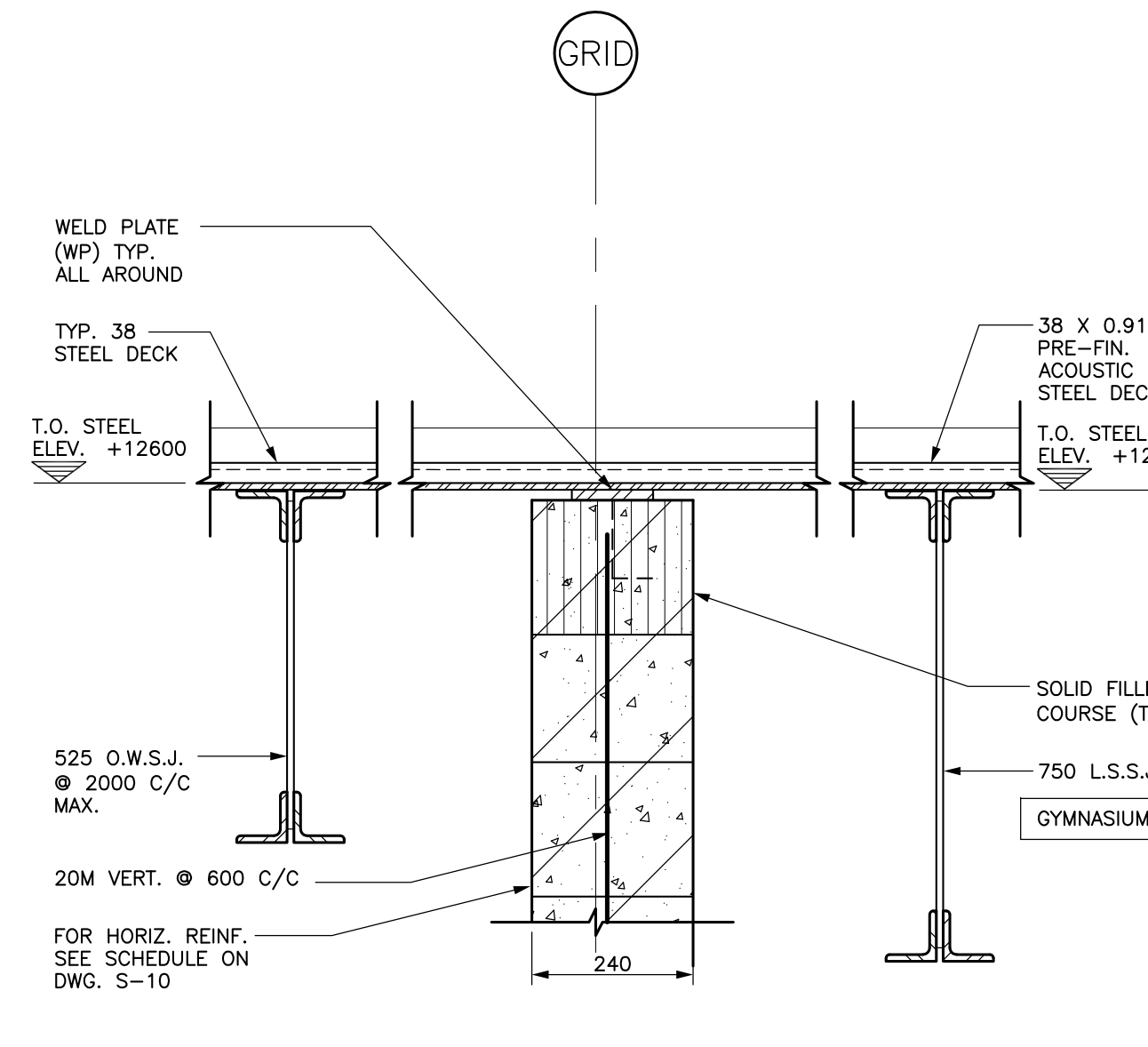
SECTION 3  
SCALE: 1:10



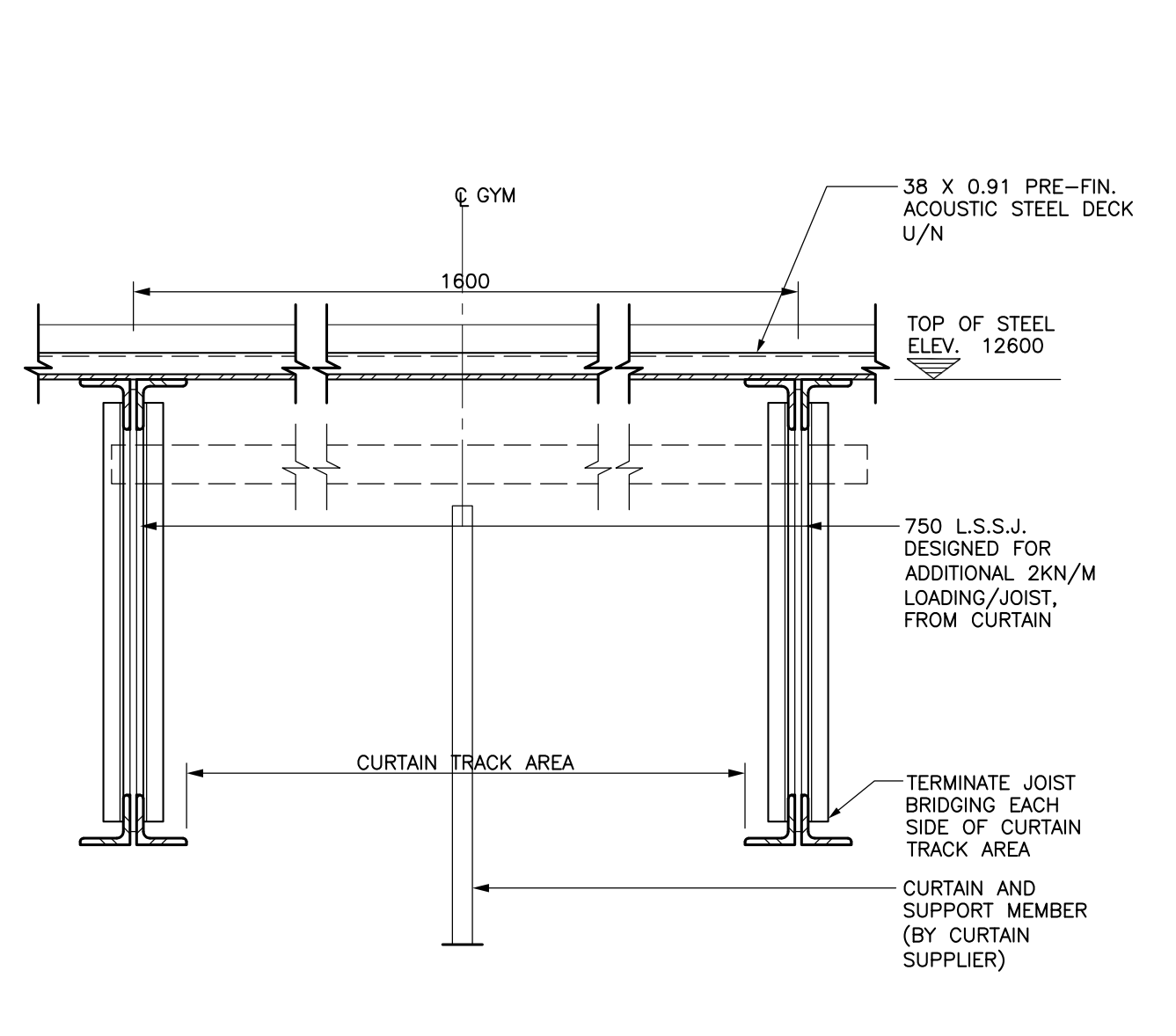
SECTION 4  
SCALE: 1:10



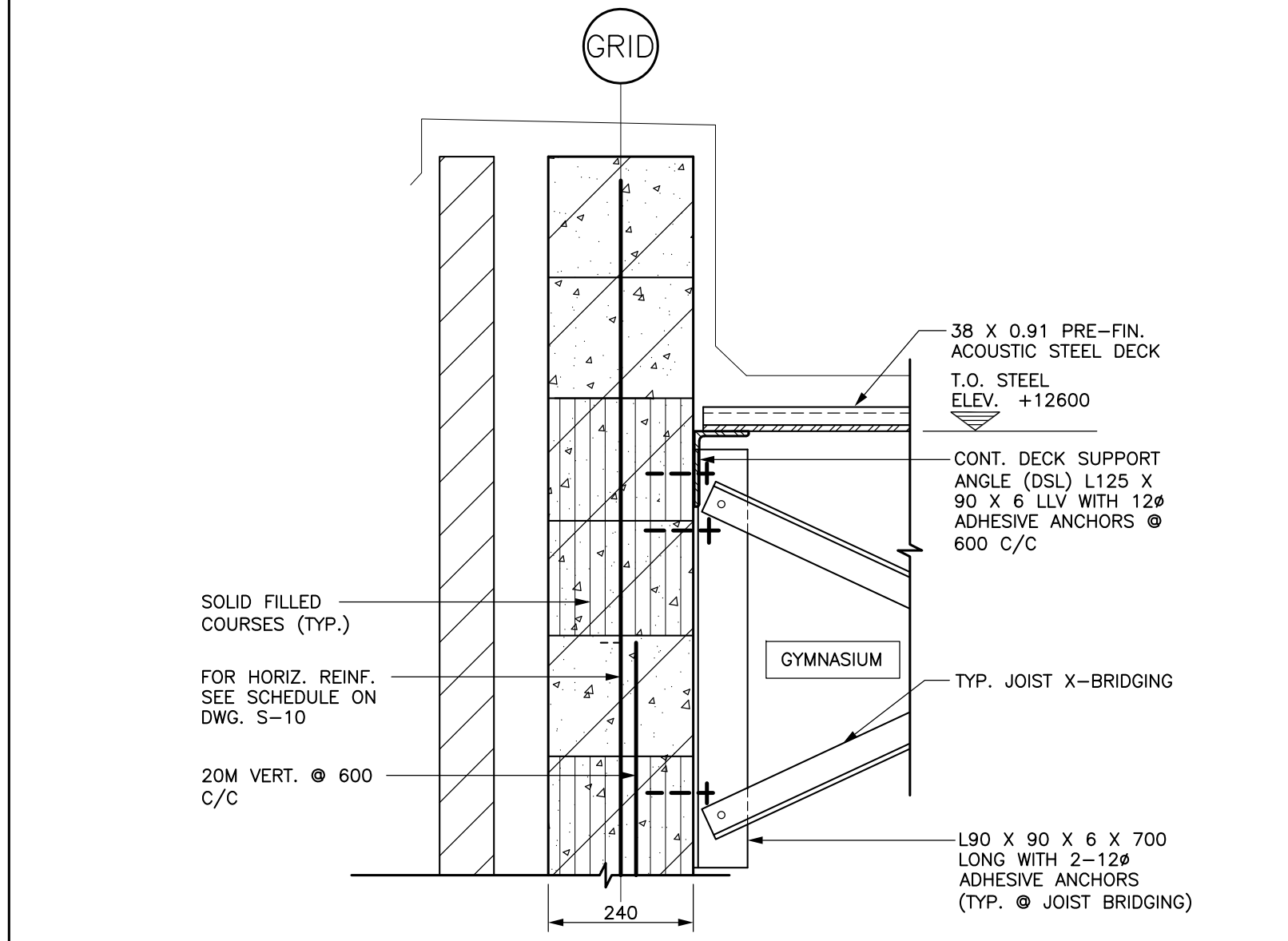
SECTION 5  
SCALE: 1:10



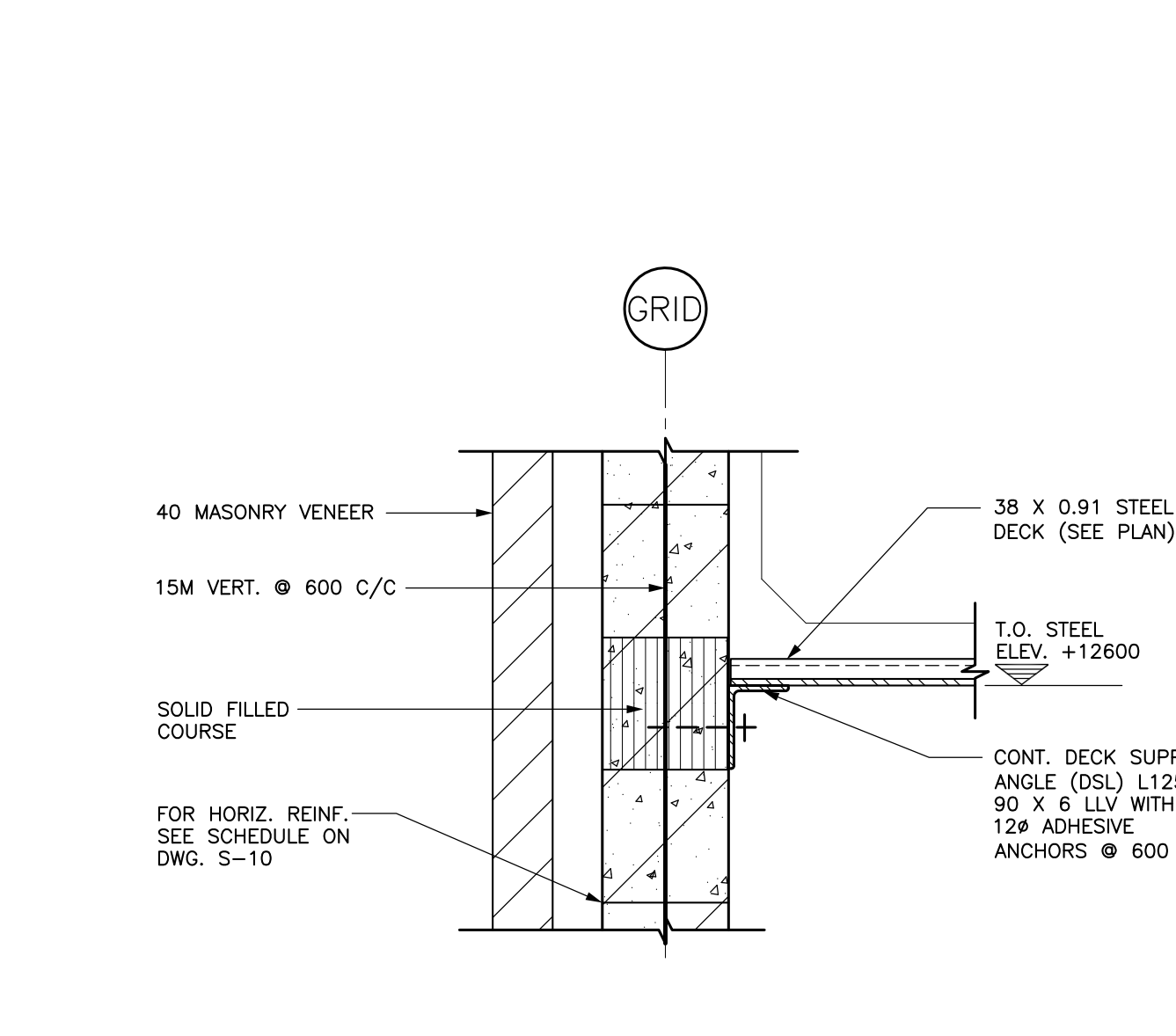
SECTION 6  
SCALE: 1:10



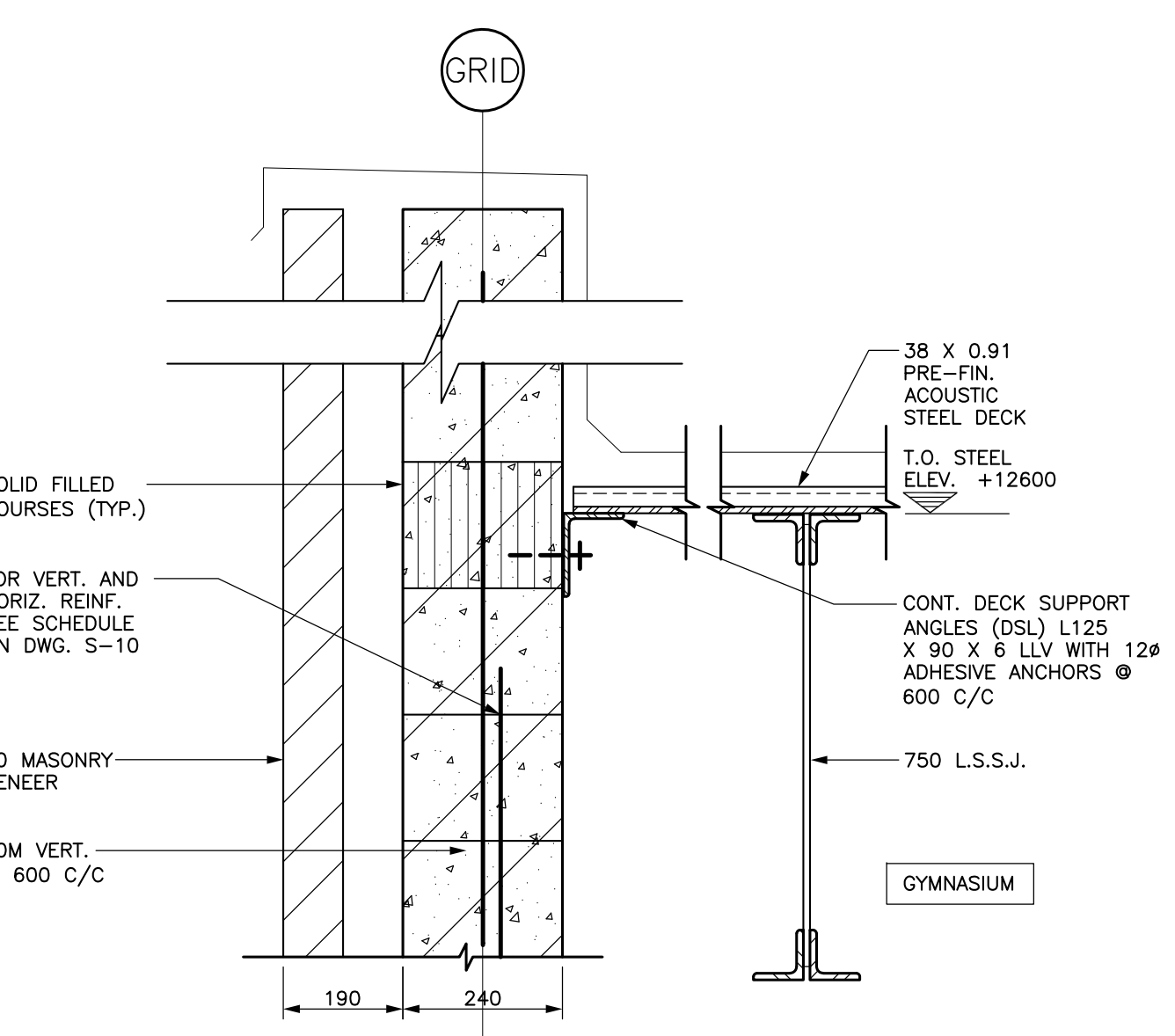
SECTION 7  
SCALE: 1:10



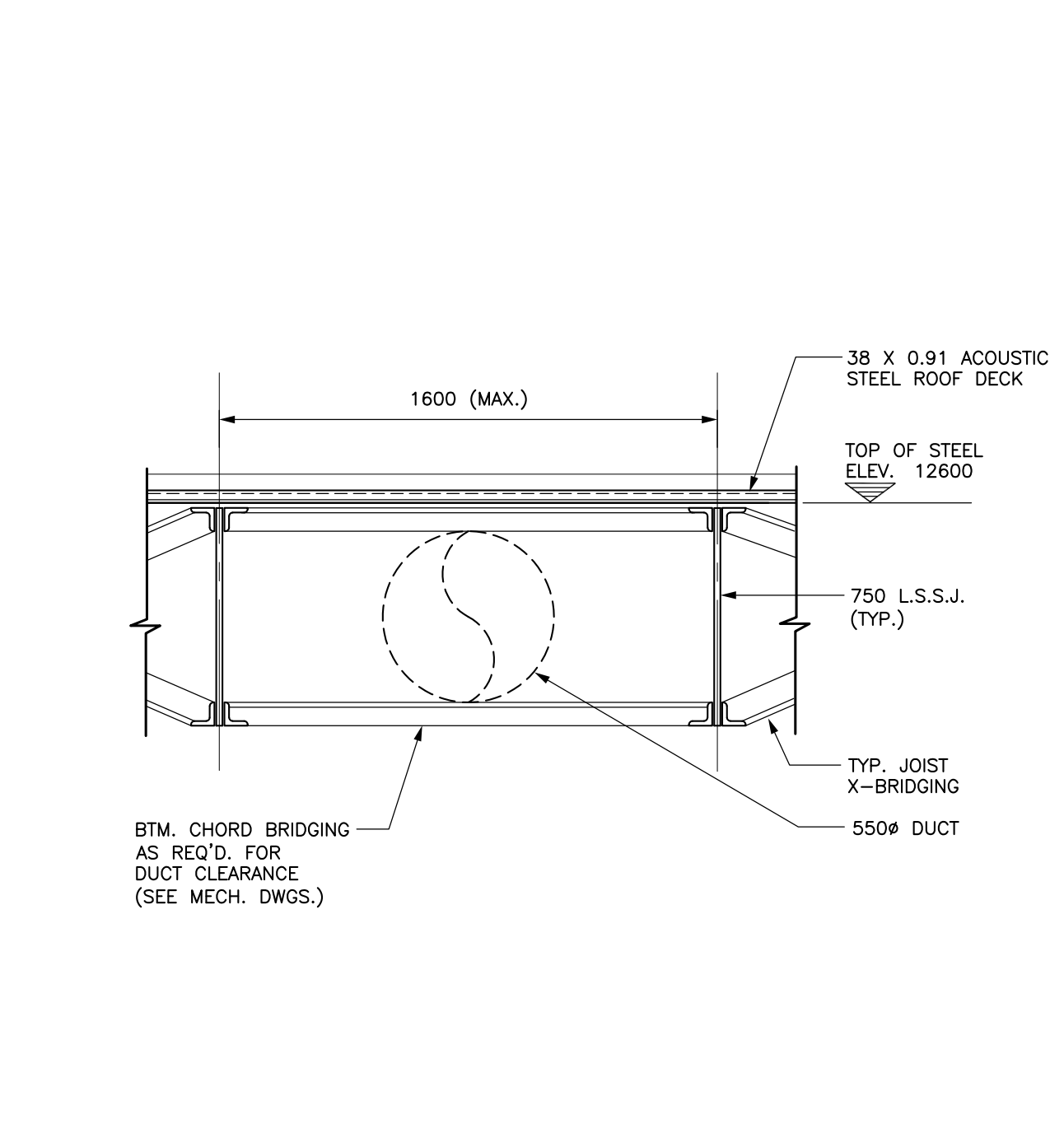
SECTION 8  
SCALE: 1:10



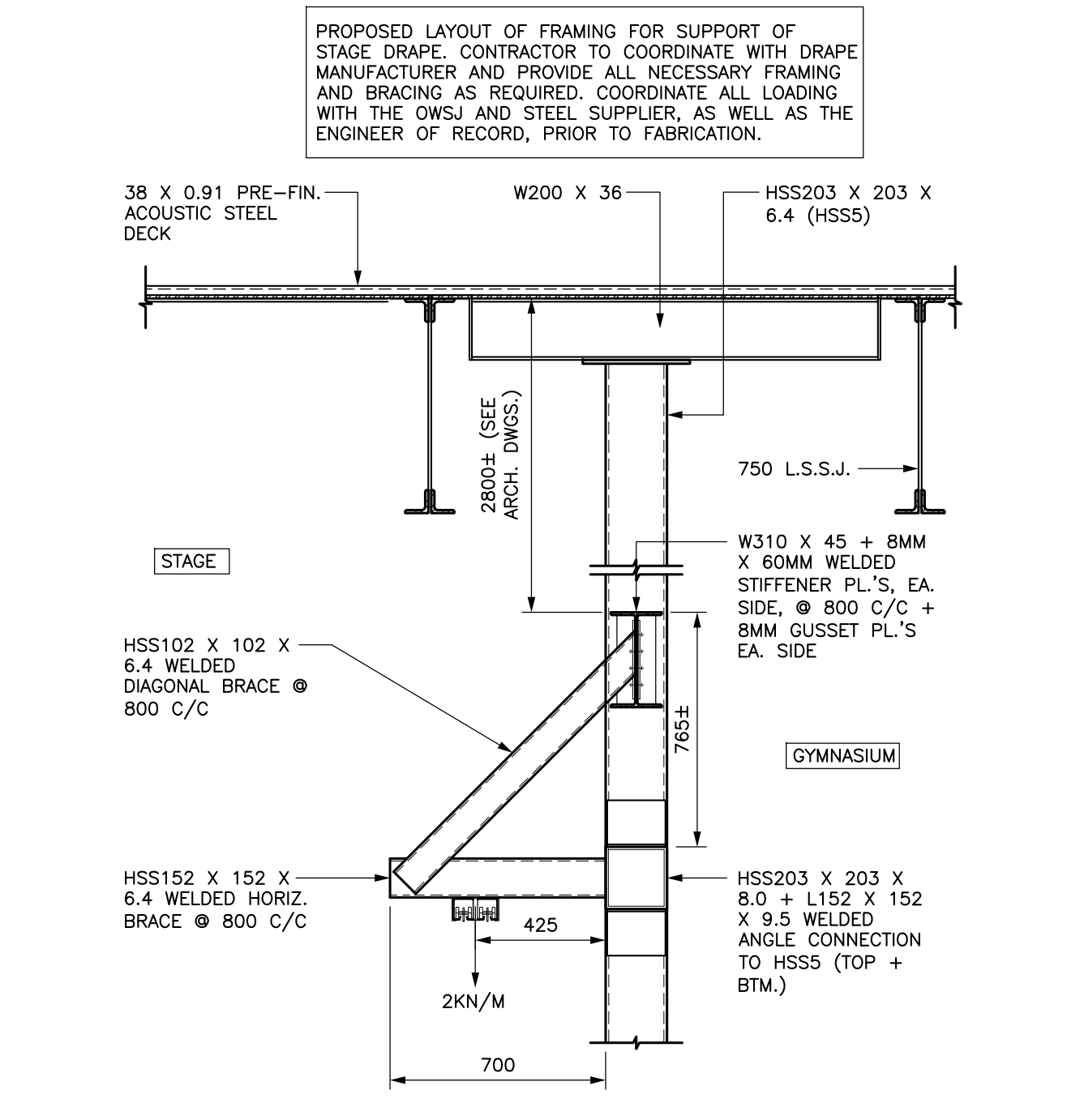
SECTION 9  
SCALE: 1:10



SECTION 10  
SCALE: 1:10

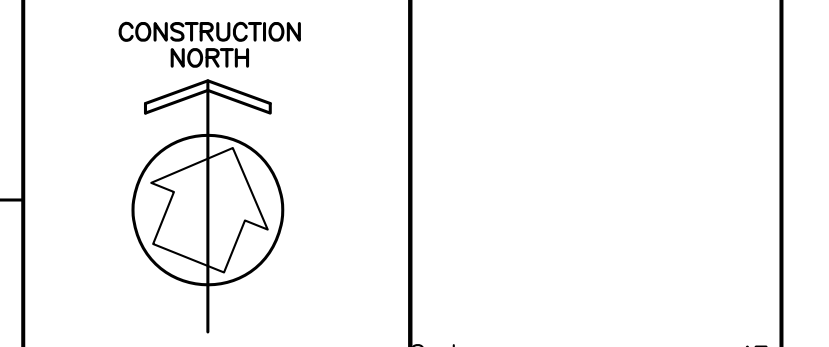


SECTION 11  
SCALE: 1:20



SECTION 12  
SCALE: 1:20

No.	DATE	DESCRIPTION
2.	12/01/20	ISSUED FOR TENDER
1.	08/09/19	ISSUED FOR COORDINATION



Hamilton-Wentworth Catholic District School Board  
Believing. Achieving. Serving

**CND ENGINEERING LIMITED**  
1115 KING STREET EAST, 3RD FLOOR  
HAMILTON, ON L8N 1A9

THE FOUNDATION TO A SUCCESSFUL PROJECT STARTS HERE.

WWW.CNDENG.CA

**ST. PATRICK CATHOLIC ELEMENTARY SCHOOL**

20 EAST AVENUE SOUTH  
HAMILTON ONTARIO

ROOF FRAMING PLAN DETAILS

SCALE	DRWEN	PROJECT No.
AS NOTED	PAS	18044
DATE	CHECKED	DRAWING No.
AUG., 2019	DL	S-8