



MOHAWK COLLEGE - FENNELLS CAMPUS, C-WING WINDOW REPLACEMENT

135 FENNELLS AVENUE WEST HAMILTON, ON L9C 0E5

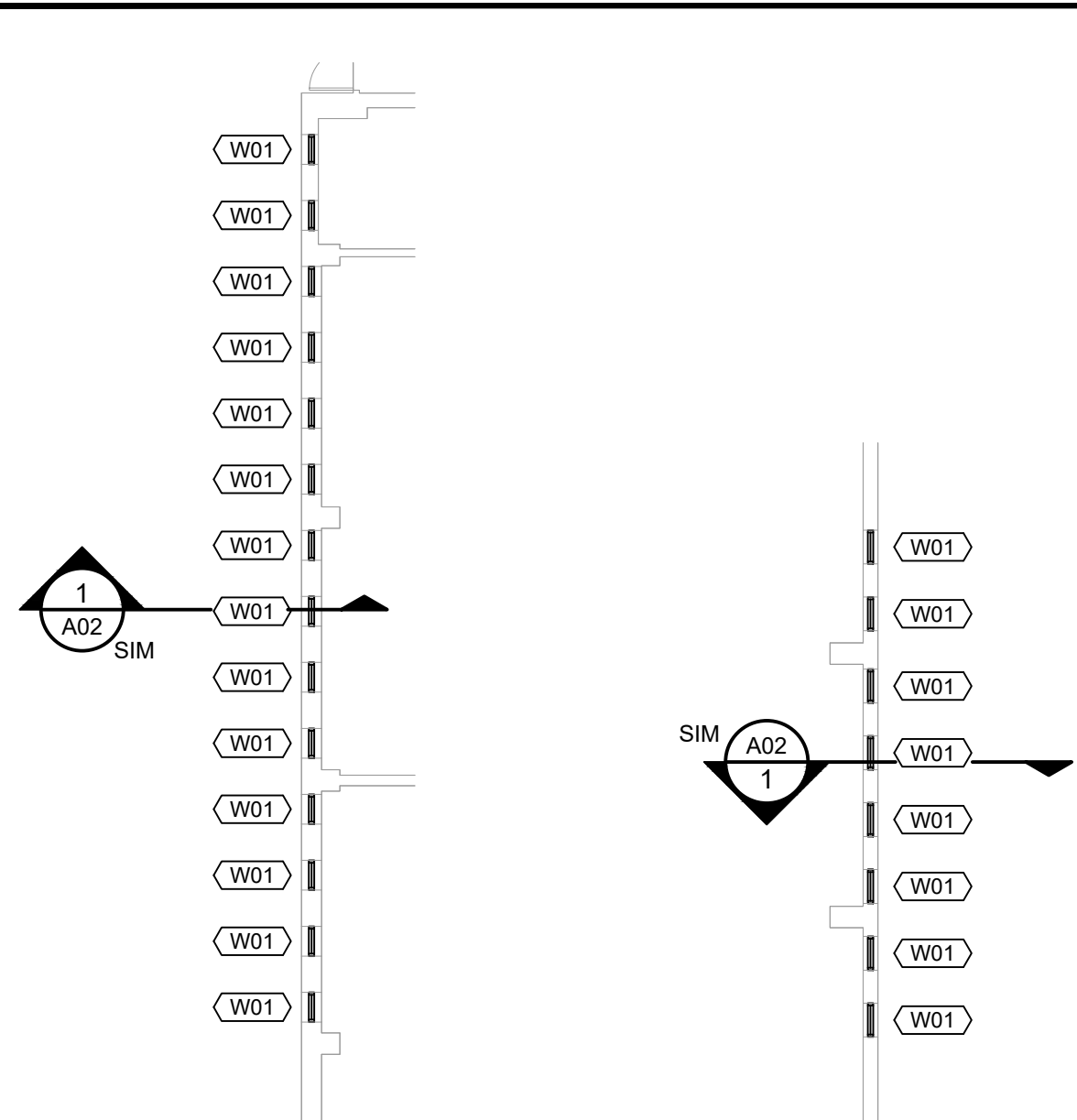
JLR JOB NO. 31830-017
ISSUED FOR TENDER
APRIL 12, 2024

DRAWING LISTS

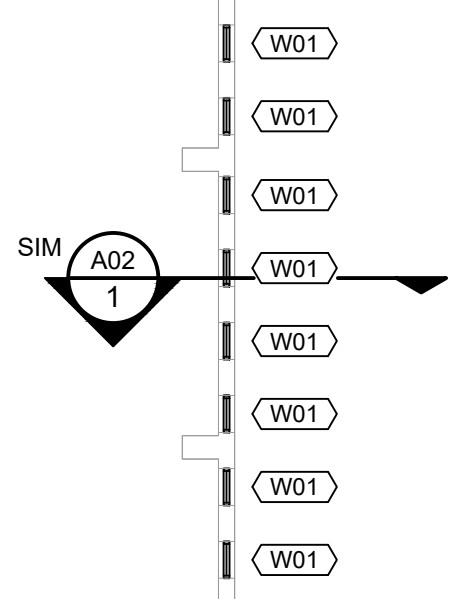
ARCHITECTURAL

- A01 GENERAL NOTES AND PLANS
- A02 SECTION DETAILS AND WINDOW ELEVATIONS
- A03 SPECIFICATIONS
- A04 SPECIFICATIONS

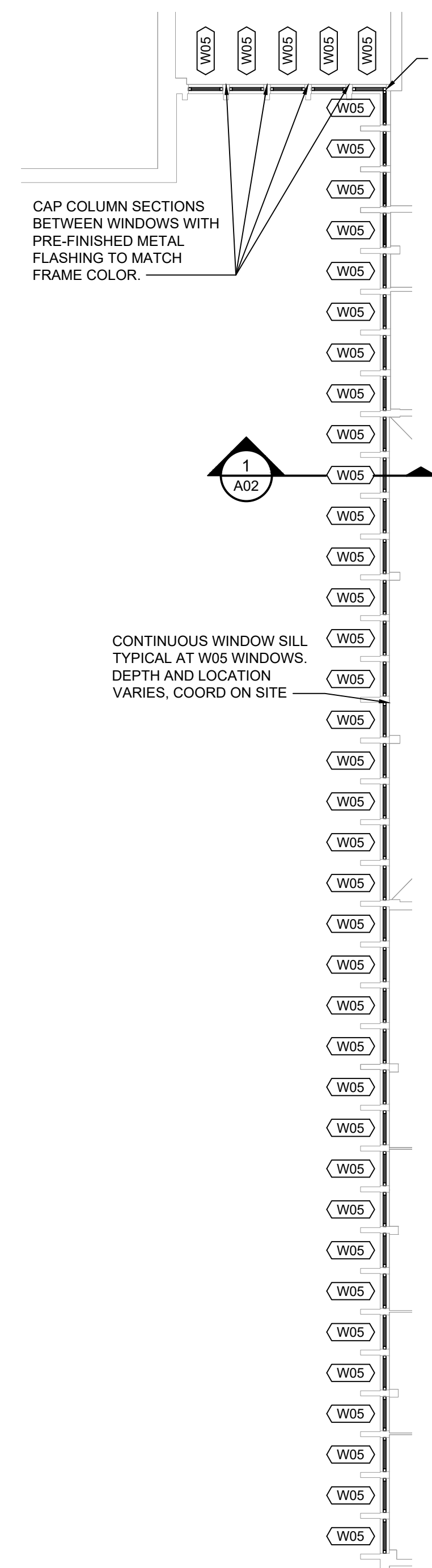




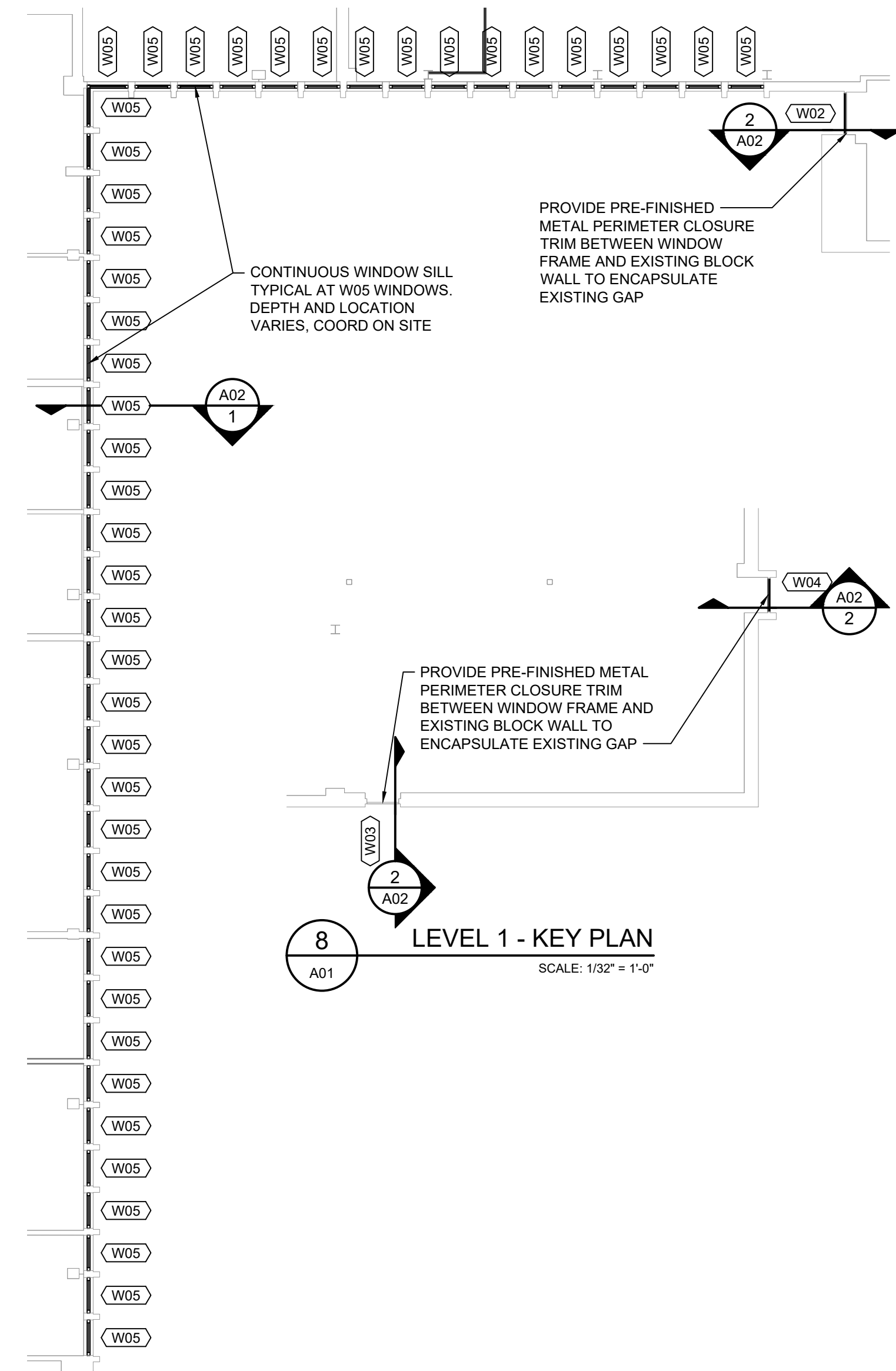
4 ENLARGED PLAN
SCALE: 1/32" = 1'-0"



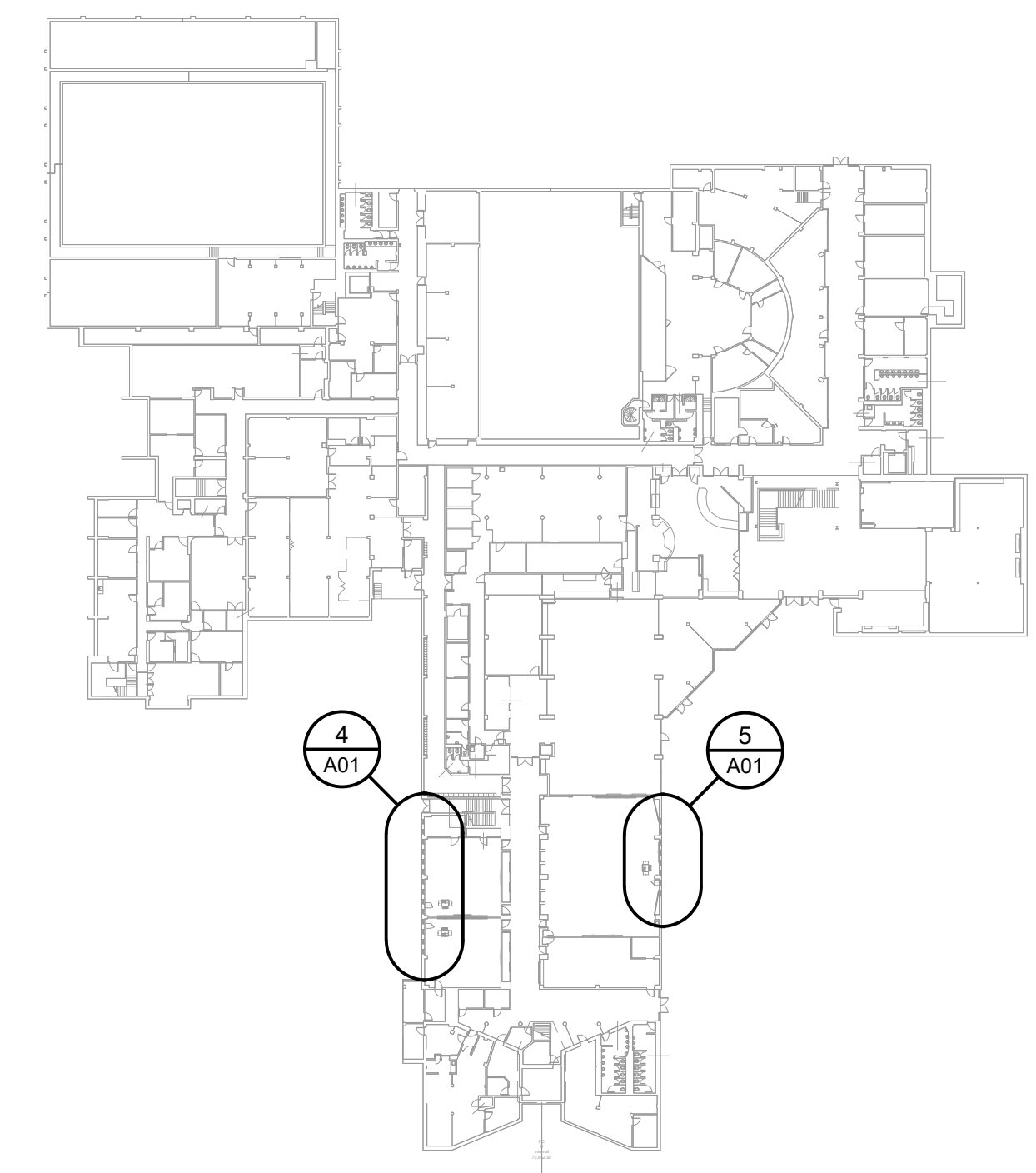
5 ENLARGED PLAN
SCALE: 1/32" = 1'-0"



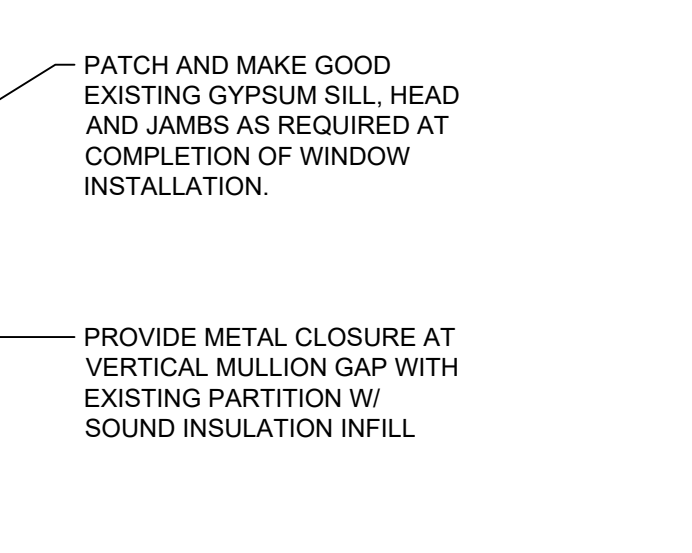
6 ENLARGED PLAN
SCALE: 1/32" = 1'-0"



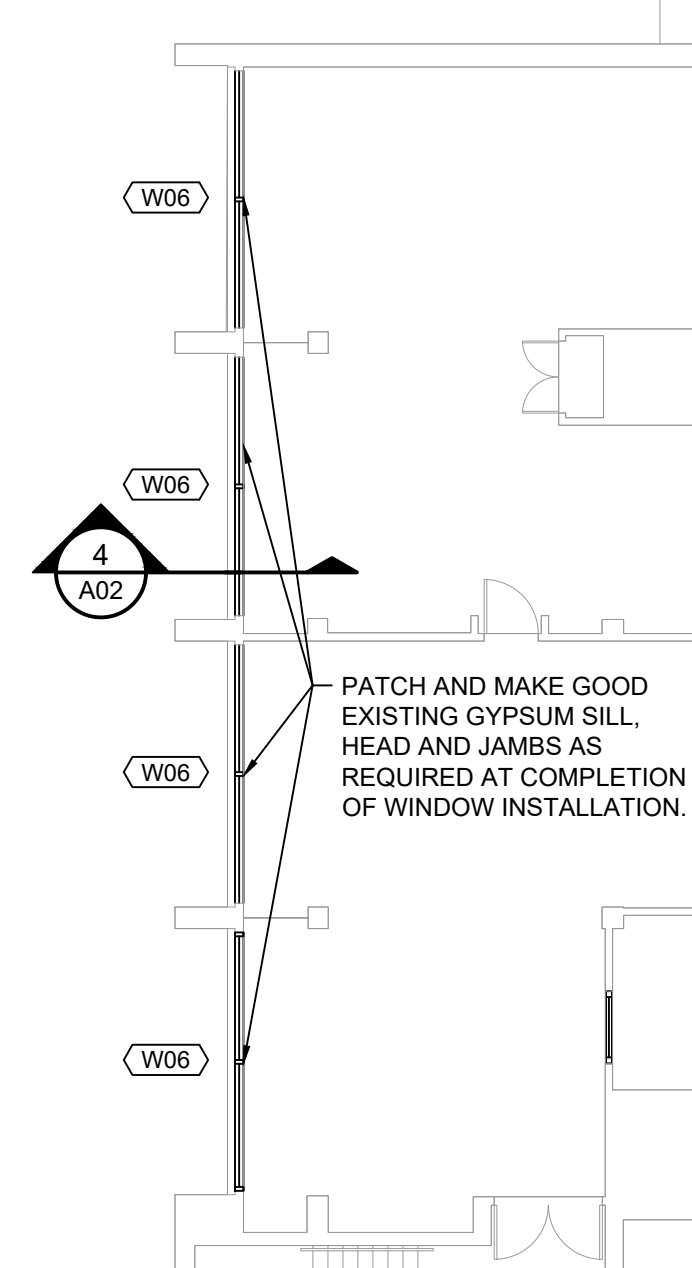
7 ENLARGED PLAN
SCALE: 1/32" = 1'-0"



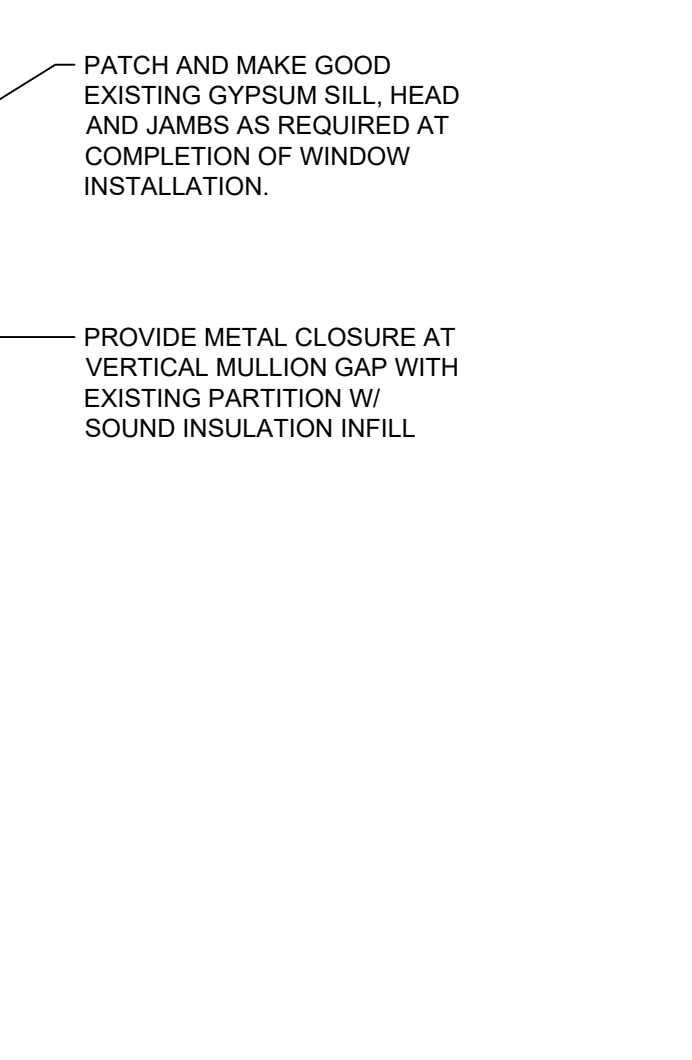
1 LEVEL 0 - KEY PLAN
SCALE: 1/64" = 1'-0"



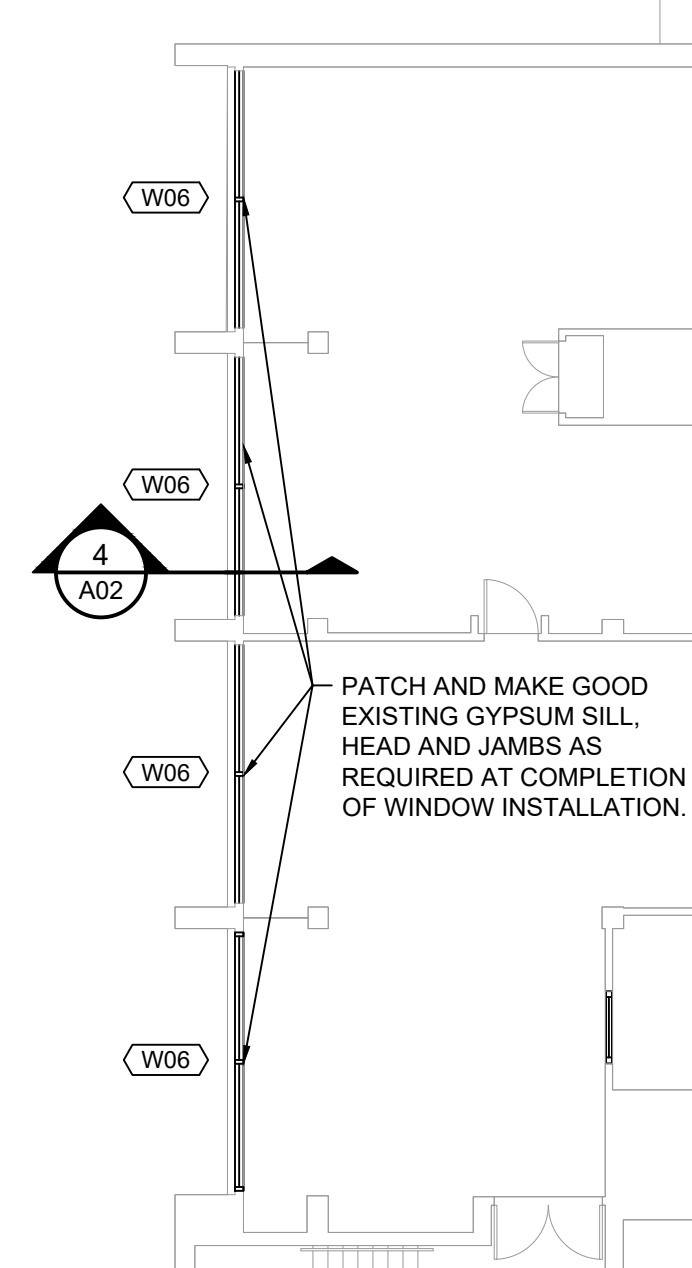
11 ENLARGED PLAN
SCALE: 1/32" = 1'-0"



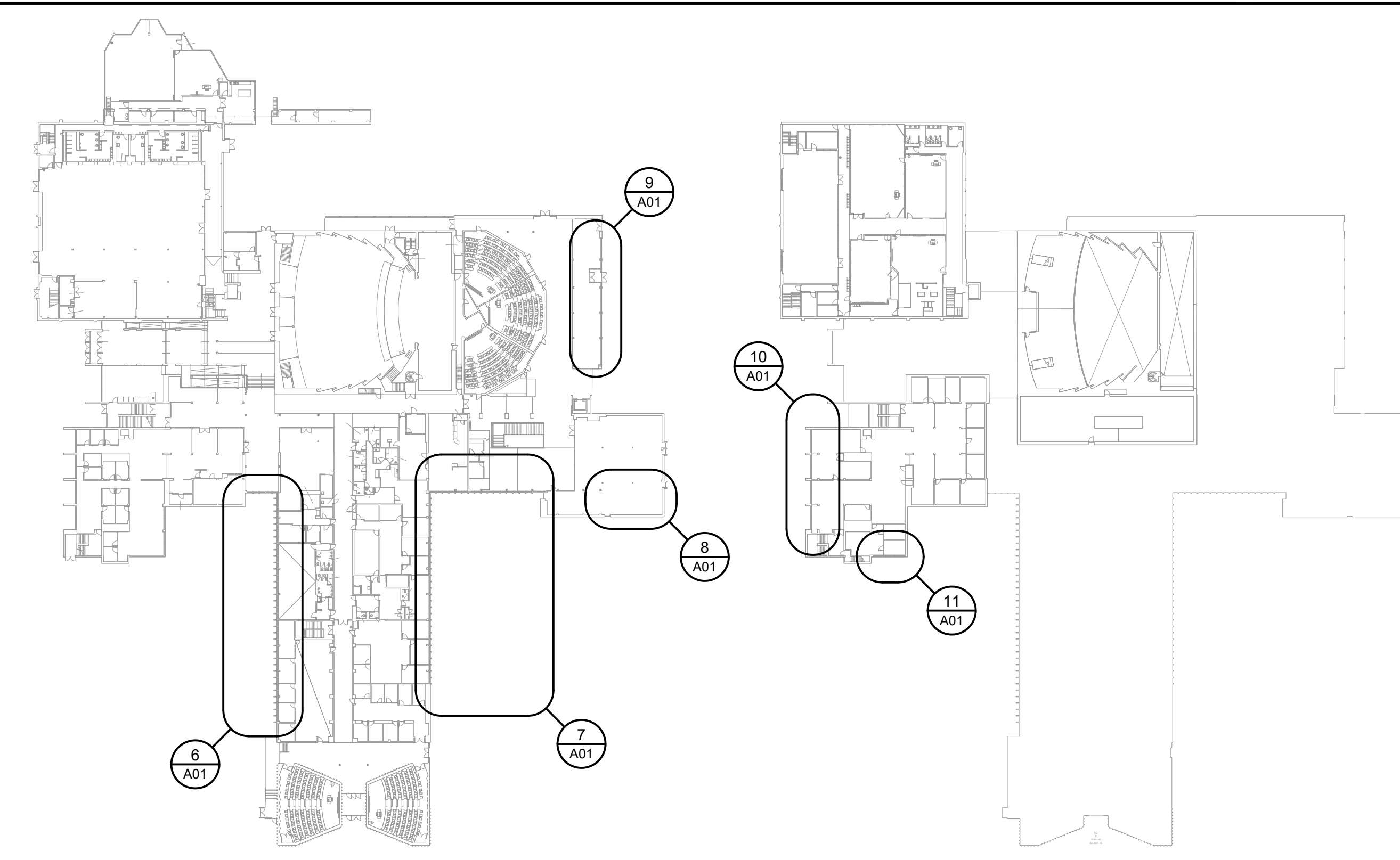
10 ENLARGED PLAN
SCALE: 1/32" = 1'-0"



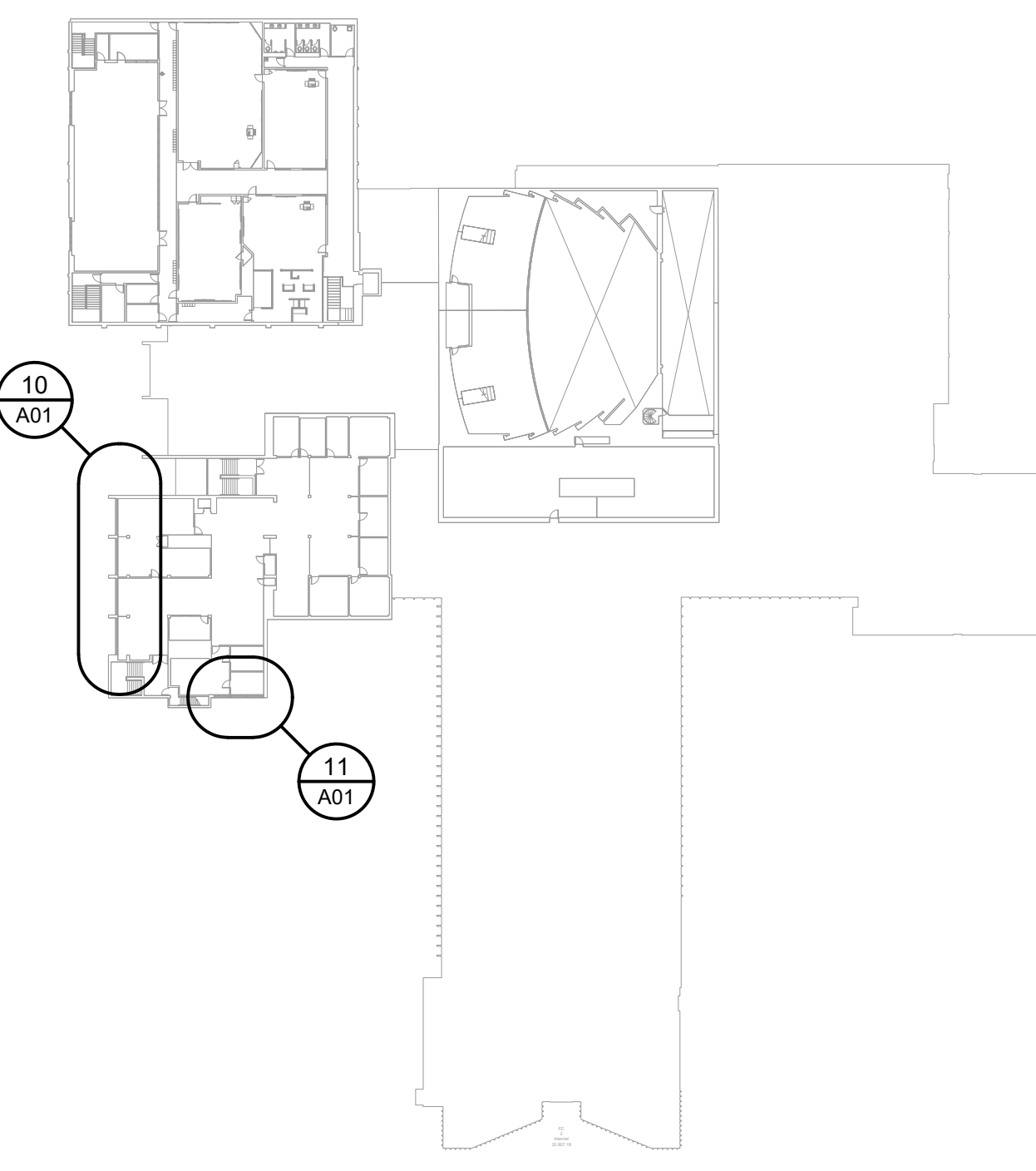
8 LEVEL 1 - KEY PLAN
SCALE: 1/32" = 1'-0"



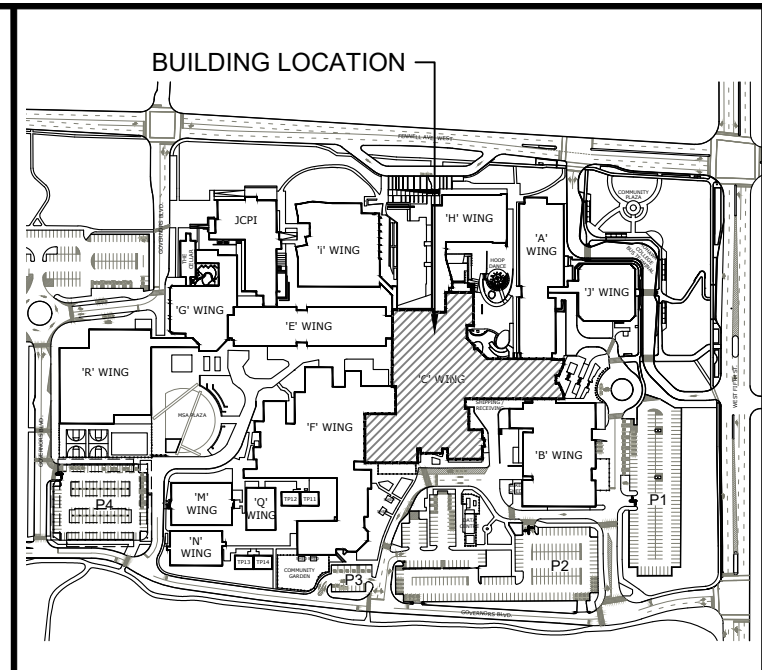
9 ENLARGED PLAN
SCALE: 1/32" = 1'-0"



2 LEVEL 1 - KEY PLAN
SCALE: 1/64" = 1'-0"



3 LEVEL 2 - KEY PLAN
SCALE: 1/64" = 1'-0"



KEY PLAN

WINDOW DEMOLITION NOTES

- CAREFULLY EXAMINE ALL EXISTING SITE CONDITIONS AND BUILDING COMPONENTS ALONG WITH ALL DIMENSIONS WHICH MAY AFFECT THE PROPER EXECUTION OF THE WORK, SO THAT A CLEAR AND COMPREHENSIVE UNDERSTANDING OF THE SCOPE OF WORK IS ACHIEVED.
- CONTRACTOR IS RESPONSIBLE TO MAKE GOOD ALL EXISTING AREAS DISTURBED BY CONSTRUCTION ACTIVITIES. THE CONTRACTOR MUST REPAIR DAMAGES TO MATCH EXISTING AT OWN EXPENSE.
- THE CONTRACTOR SHALL BE HELD TO HAVE VISITED THE SITE PRIOR TO BID SUBMISSION AND TO HAVE EXAMINED ALL CONDITIONS AFFECTING THE WORK. NO CLAIMS FOR EXTRA WORK RELATED TO EXISTING CONDITIONS THAT WERE VISIBLE OR REASONABLY INFERRABLE PRIOR TO THE START OF THE RENOVATION WORK WILL BE ACCEPTED.
- PROVIDE TEMPORARY CONTROLS IN ORDER TO EXECUTE WORK EXPEDITIOUSLY. REMOVE FROM SITE ALL SUCH WORK AFTER USE.
- PROVIDE DUST TIGHT SCREENS OR PARTITIONS TO LOCALIZE DUST GENERATION ACTIVITIES AND FOR THE PROTECTION OF WORKERS. FINISHED AREAS OF WORK AND THE PUBLIC. MAINTAIN AND RELOCATE PROTECTION UNTIL SUCH WORK IS COMPLETE.
- PROVIDE PROTECTION FOR FINISHED AND PARTIALLY FINISHED BUILDING FINISHES AND EQUIPMENT DURING PERFORMANCE OF WORK. PROVIDE NECESSARY SCREENS, COVERS AND HOARDING AS REQUIRED. CONTRACTOR WILL BE RESPONSIBLE FOR DAMAGE INCURRED DUE TO LACK OF OR IMPROPER PROTECTION.
- MAINTAIN THE WORK IN TIDY CONDITION, FREE FROM ACCUMULATION OF WASTE PRODUCTS AND DEBRIS, OTHER THAN THAT CAUSED BY THE DEMOLITION PROCESS DURING EACH DAY. REMOVE WASTE MATERIALS AND DEBRIS FROM THE SITE AND DEPOSIT IN WASTE CONTAINER AT THE END OF EACH WORKING DAY.
- CONTRACTOR TO SUPPLY, INSTALL AND MAINTAIN WEATHER TIGHT AND VANDAL RESISTANT HOARDING IN AREAS OF WINDOW REMOVAL DURING THE ENTIRE COURSE OF THE PROJECT.
- WHERE BUILDING COMPONENTS, MATERIALS AND EQUIPMENT ARE INDICATED FOR REMOVAL, CONTRACTOR TO REMOVE ALL COMPONENTS, ATTACHMENTS AND ACCESSORIES BACK TO STRUCTURE AND/OR SUBSTRATE UNLESS OTHERWISE NOTED.
- REMOVE AND DISPOSE OF EXISTING WINDOWS AND FLASHING AS INDICATED ON DRAWINGS
- TEMPORARILY REMOVE AND STORE ON SITE FOR RE-INSTALLATION EXISTING CURTAINS AND BLINDS IN AREAS AFFECTED BY WINDOW SCOPE.
- PATCH AND MAKE GOOD DAMAGES TO EXISTING SURFACES TO REMAIN, MATCH EXISTING.
- PROVIDE SECURE HOARDING OVER EXPOSED WINDOW OPENINGS LEFT UNATTENDED PRIOR TO NEW WINDOW INSTALLATION.
- TEMPORARILY REMOVE, MODIFY AND REINSTALL ALL EXISTING WINDOW SILLS, JAMBS, AND HEADS WHERE REQUIRED TO FACILITATE REMOVAL/INSTALLATION OF WINDOWS. PATCH AND MAKE GOOD TO MATCH ADJACENT FINISHED SURFACES

ITEMIZED AND UNIT PRICES

- CONTRACTOR TO PROVIDE ITEMIZED PRICE TO COMPLETE WINDOW REPLACEMENT SCOPE AS IDENTIFIED IN THE DRAWINGS ON A FLOOR BY FLOOR BASIS.
- CONTRACTOR TO PROVIDE UNIT PRICES TO:
 - SUPPLY AND INSTALLATION OF EACH WINDOW TYPE.
 - SUPPLY AND INSTALLATION OF (1) BOTTOM GLASS UNIT IN WINDOW TYPE W08.

GENERAL NOTES

- ALL WORK TO COMPLY WITH THE 2012 ONTARIO BUILDING CODE AND ALL APPLICABLE MUNICIPAL BY-LAWS.
- ALL MATERIALS ARE TO BE ORDERED WHEN THE CONSTRUCTION CONTRACT IS AWARDED. AT THIS TIME THE CONTRACTOR IS TO CONFIRM THAT ALL DELIVERIES WILL MEET CONSTRUCTION SCHEDULE. SUBSTITUTIONS WILL NOT BE ACCEPTED DUE TO LATE ORDERING. IN THE EVENT THAT MATERIALS ARE NOT AVAILABLE IN TIME TO MEET SCHEDULE COMPLETION DATES, THE CONTRACTOR SHALL PROVIDE PROOF OF DATE OF ORDER OF MATERIALS PRIOR TO REQUESTING SUBSTITUTIONS.
- VERIFY ALL DIMENSIONS ON SITE. REPORT ANY DISCREPANCIES TO THE CONSULTANT BEFORE PROCEEDING WITH THE WORK.
- DRAWINGS ARE NOT TO BE SCALED.
- NOTIFY CONSULTANT IMMEDIATELY WHEREVER DIMENSIONS SHOWN ARE UNCLEAR OR WHERE CONFLICTS ARISE.
- ALL MATERIALS ARE NEW UNLESS NOTED OTHERWISE.
- ALL DIMENSIONS SHOWN ARE PLUS/MINUS. CONFIRM ALL DIMENSIONS ON SITE PRIOR TO FABRICATION, CONSTRUCTION AND/OR ORDERING OF MATERIALS. NOTIFY CONSULTANT OF ANY DISCREPANCIES.
- CONTRACTOR TO COORDINATE NOISY OPERATIONS WITH THE OWNER TO ENSURE MINIMAL NOISE DISRUPTIONS TO THE OCCUPANTS.
- REPAIR ANY DAMAGES CAUSED BY DEMOLITION/CONSTRUCTION ACTIVITIES TO EXISTING SURFACES TO REMAIN. REPAIRS TO MATCH EXISTING FINISHES.
- CONSTRUCT WORK IN STAGES TO ACCOMMODATE OWNERS CONTINUED USE OF PREMISES DURING CONSTRUCTION.
- COORDINATE PLANNED SCHEDULE OF WORK WITH OWNERS REQUIREMENTS
- MAINTAIN FIRE ACCESS/CONTROL OF ALL EXITS DURING NORMAL OPERATING HOURS. WORK WHICH AFFECTS EMERGENCY EGRESS TO BE COMPLETED DURING OFF-HOURS. COORDINATE WITH OWNER.
- SUBMIT PROPOSED STAGING OF WORK UPON PROJECT INITIATION FOR REVIEW AND ACCEPTANCE BY OWNER AND CONSULTANT.
- REFER TO DESIGNATED SUBSTANCES REPORT FOR DESIGNATE SUBSTANCES.

No.	ISSUE / REVISION	DDMMYY
B	ISSUED FOR TENDER	12/04/24
A	ISSUED FOR 100% CLIENT REVIEW	22/03/24

THESE DRAWINGS HAVE BEEN PRODUCED BY J.L. RICHARDS & ASSOCIATES LIMITED AND ARE SUBJECT TO COPYRIGHT AND USE RESTRICTIONS SET OUT IN THE APPLICABLE PROJECT CONTRACT. ANY USE, REUSE, OR MODIFICATION OF THESE DRAWINGS FOR PURPOSES OTHER THAN THE ORIGINAL PROJECT OR EXECUTION OF THE DESCRIBED WORK IS NOT PERMITTED OR ENDORSED WITHOUT THE PRIOR WRITTEN AUTHORIZATION OF J.L.R. J.L.R. MAKES NO WARRANTIES, EITHER EXPRESS OR IMPLIED, OF THE SUITABILITY OR FITNESS OF THESE DRAWINGS FOR ANY OTHER PURPOSE, AND ANY PARTY WHICH CHOOSES TO USE, MODIFY, OR OTHERWISE RELY ON THESE DRAWINGS WITHOUT J.L.R.'S AUTHORIZATION ACCEPTS THESE LIMITATIONS AND DOES SO AT THEIR SOLE RISK AND WITHOUT LIABILITY TO J.L.R.

VERIFY SHEET SIZE AND SCALES. THE BAR TO THE RIGHT IS 25mm IF THIS IS A FULL SIZE DRAWING.

SCALE: 0 25mm

CLIENT:

MOHAWK COLLEGE

CONSULTANT:

J.L. Richards ENGINEERS - ARCHITECTS - PLANNERS

CONSULTANT:

PROFESSIONAL STAMP PROJECT NORTH

PROJECT:

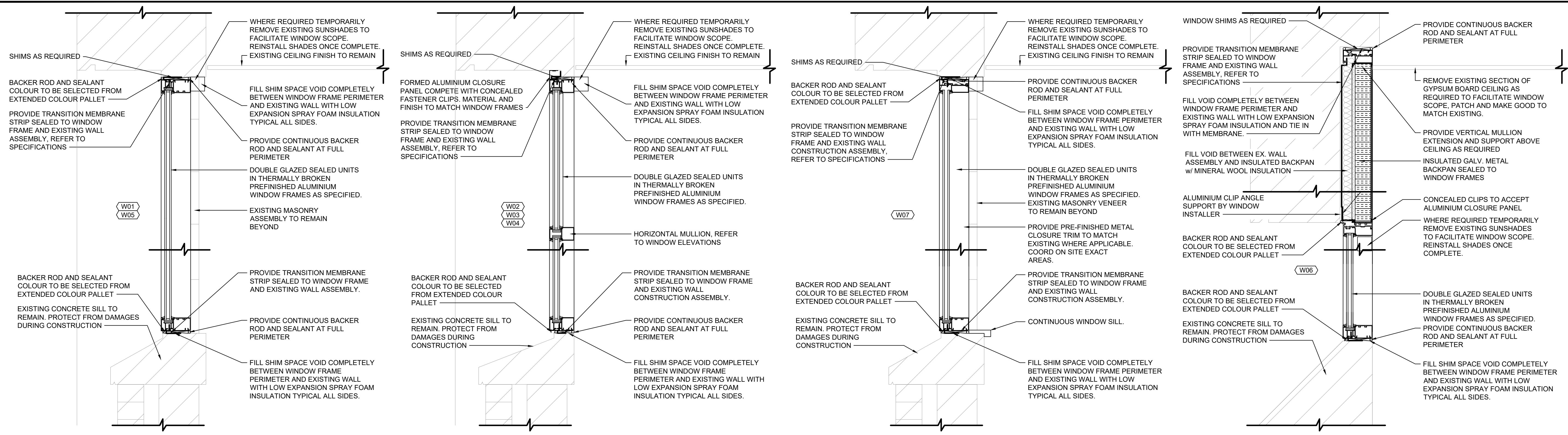
MOHAWK COLLEGE - FENNEL CAMPUS - C-WING; WINDOW REPLACEMENT

135 FENNEL AVENUE WEST, HAMILTON, ON L9C 035

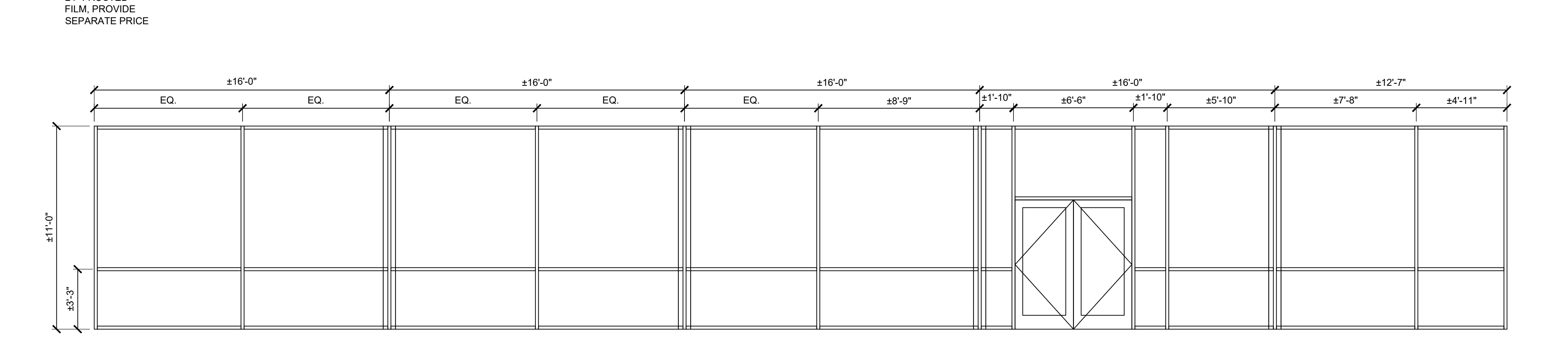
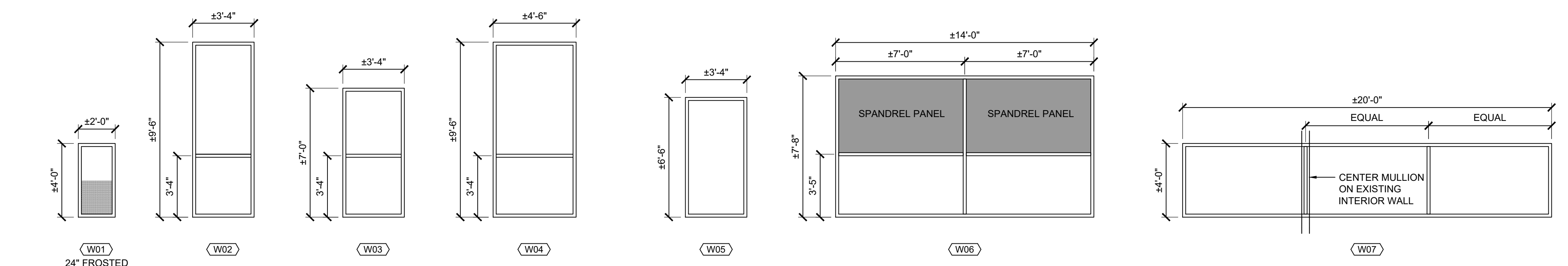
DRAWING:

GENERAL NOTES AND PLANS

DESIGN: JG	DRAWING #:
DRAWN: JG	A01
CHECKED: TA/MMS	
JLR #: 31830-017	

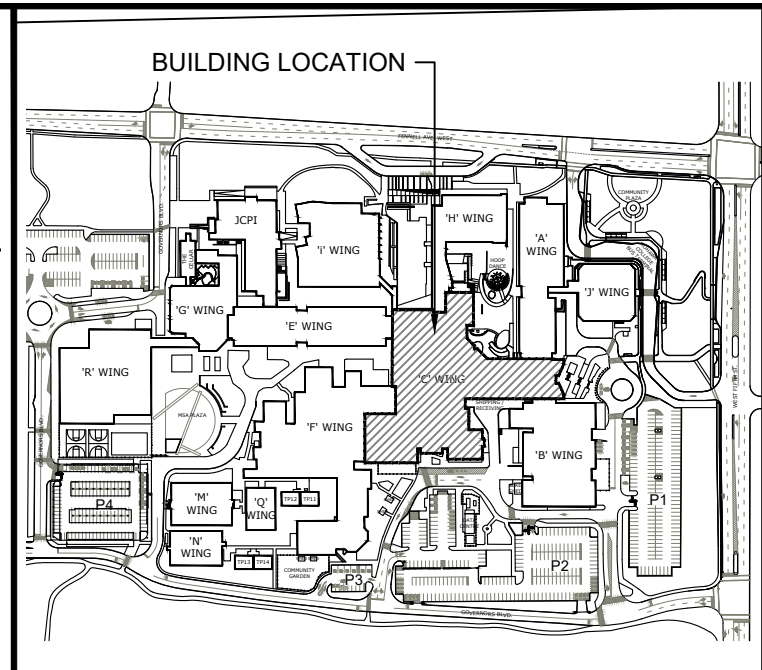


1 SECTION DETAIL SCALE: 1-1/2" = 1'-0"
2 SECTION DETAIL SCALE: 1-1/2" = 1'-0"
3 SECTION DETAIL SCALE: 1-1/2" = 1'-0"
4 SECTION DETAIL SCALE: 1-1/2" = 1'-0"



CONTRACTOR TO PROVIDE FOR REPLACEMENT OF BOTTOM DOUBLE GLAZED SEALED UNITS SHOWING SIGNS OF CONDENSATION BUILDUP. INCLUDE FOR A TOTAL OF 4 UNITS.
 EXISTING STOREFRONT ASSEMBLY TO REMAIN (W08)

5 WINDOW FRAME ELEVATIONS SCALE: 1/4" = 1'-0"



KEY PLAN

B	ISSUED FOR TENDER	12/04/24
A	ISSUED FOR 100% CLIENT REVIEW	22/03/24
No.	ISSUE / REVISION	DDMMYY

THESE DRAWINGS HAVE BEEN PRODUCED BY J.L. RICHARDS & ASSOCIATES LIMITED AND ARE SUBJECT TO COPYRIGHT AND USE RESTRICTIONS SET OUT IN THE APPLICABLE PROJECT CONTRACT. ANY USE, REUSE, OR MODIFICATION OF THESE DRAWINGS FOR PURPOSES OTHER THAN THE ORIGINAL PROJECT OR EXECUTION OF THE DESCRIBED WORK IS NOT PERMITTED OR ENDORSED WITHOUT THE PRIOR WRITTEN AUTHORIZATION OF J.L.R. J.L.R. MAKES NO WARRANTIES, EITHER EXPRESS OR IMPLIED, OF THE SUITABILITY OR FITNESS OF THESE DRAWINGS FOR ANY OTHER PURPOSE, AND ANY PARTY WHICH CHOOSES TO USE, MODIFY, OR OTHERWISE RELY ON THESE DRAWINGS WITHOUT J.L.R.'S AUTHORIZATION ACCEPTS THESE LIMITATIONS AND DOES SO AT THEIR SOLE RISK AND WITHOUT LIABILITY TO J.L.R.

VERIFY SHEET SIZE AND SCALES. THE BAR TO THE RIGHT IS 25mm IF THIS IS A FULL SIZE DRAWING. 0 25mm

SCALE:

CLIENT:
MOHAWK COLLEGE

CONSULTANT:
J.L. Richards ENGINEERS - ARCHITECTS - PLANNERS

CONSULTANT:
ONTIARIO ASSOCIATION OF ARCHITECTS
 LICENCE 8137

PROJECT:
MOHAWK COLLEGE - FENNELL CAMPUS - C-WING; WINDOW REPLACEMENT
 135 FENNELL AVENUE WEST, HAMILTON, ON L9C 0G5

DESIGN: JG
 DRAWN: JG
 CHECKED: TA/MMS
 JLR #: 31830-017

DRAWING #:
A02

SUMMARY OF WORK

- CONTRACTOR USE OF PREMISES
LIMIT USE OF PREMISES FOR WORK, FOR STORAGE, AND FOR ACCESS, TO ALLOW:
OWNER OCCUPANCY
WORK BY OTHER CONTRACTORS.
PUBLIC USAGE.
CO-ORDINATE USE OF PREMISES UNDER DIRECTION OF CONSULTANT.
OBTAIN AND PAY FOR USE OF ADDITIONAL STORAGE OR WORK AREAS NEEDED FOR OPERATIONS UNDER THIS CONTRACT.
REMOVE OR ALTER EXISTING WORK TO PREVENT INJURY OR DAMAGE TO PORTIONS OF EXISTING WORK WHICH REMAIN.
REPAIR OR REPLACE PORTIONS OF EXISTING WORK WHICH HAVE BEEN ALTERED DURING CONSTRUCTION OPERATIONS TO MATCH EXISTING OR ADJOINING WORK, AS DIRECTED BY CONSULTANT.
AT COMPLETION OF OPERATIONS CONDITION OF EXISTING WORK: EQUAL TO OR BETTER THAN THAT WHICH EXISTED BEFORE NEW WORK STARTED.
OWNER OCCUPANCY:
OWNER WILL OCCUPY PREMISES DURING ENTIRE CONSTRUCTION PERIOD FOR EXECUTION OF NORMAL OPERATIONS.
CO-OPERATE WITH OWNER IN SCHEDULING OPERATIONS TO MINIMIZE CONFLICT AND TO FACILITATE OWNER USAGE.
EXISTING SERVICES:
NOTIFY OWNER AND UTILITY COMPANIES OF INTENDED INTERRUPTION OF SERVICES AND OBTAIN REQUIRED PERMISSION.
WHERE WORK INVOLVES BREAKING INTO OR CONNECTING TO EXISTING SERVICES, GIVE OWNER AND CONSULTANT 48 HOURS NOTICE FOR NECESSARY INTERRUPTION OF MECHANICAL OR ELECTRICAL SERVICE THROUGHOUT COURSE OF WORK. MINIMIZE DURATION OF INTERRUPTIONS. CARRY OUT WORK AT TIMES AS DIRECTED BY GOVERNING AUTHORITIES WITH MINIMUM DISTURBANCE TO OWNER OPERATIONS.
ESTABLISH LOCATION AND EXTENT OF SERVICE LINES IN AREA OF WORK BEFORE STARTING WORK. NOTIFY CONSULTANT OF FINDINGS.
SUBMIT SCHEDULE TO AND OBTAIN APPROVAL FROM OWNER FOR ANY SHUT-DOWN OR CLOSURE OF ACTIVE SERVICE OR FACILITY INCLUDING POWER AND COMMUNICATIONS SERVICES. ADHERE TO APPROVED SCHEDULE AND PROVIDE NOTICE TO AFFECTED PARTIES.
WHERE UNKNOWN SERVICES ARE ENCOUNTERED, IMMEDIATELY ADVISE CONSULTANT AND CONFIRM FINDINGS IN WRITING.
PROTECT, RELOCATE OR MAINTAIN EXISTING ACTIVE SERVICES. WHEN INACTIVE SERVICES ARE ENCOUNTERED, CAP OFF IN MANNER APPROVED BY AUTHORITIES HAVING JURISDICTION.
RECORD LOCATIONS OF MAINTAINED, RE-ROUTED AND ABANDONED SERVICE LINES.

REGULATORY REQUIREMENTS

- REFERENCES AND CODES:
PERFORM WORK IN ACCORDANCE WITH ONTARIO BUILDING CODE (OBC) INCLUDING AMENDMENTS UP TO TENDER CLOSING DATE AND OTHER CODES OF PROVINCIAL OR LOCAL APPLICATION PROVIDED THAT IN CASE OF CONFLICT OR DISCREPANCY, MORE STRINGENT REQUIREMENTS APPLY.
MEET OR EXCEED REQUIREMENTS OF:
CONTRACT DOCUMENTS.
SPECIFIED STANDARDS, CODES AND REFERENCED DOCUMENTS.
HAZARDOUS MATERIAL DISCOVERY:
ASBESTOS: DEMOLITION OF SPRAY OR TROWEL-APPLIED ASBESTOS IS HAZARDOUS TO HEALTH. STOP WORK IMMEDIATELY WHEN MATERIAL RESEMBLING SPRAY OR TROWEL-APPLIED ASBESTOS IS ENCOUNTERED DURING DEMOLITION WORK. NOTIFY CONSULTANT.
PCB: POLYCHLORINATED BIPHENYL: STOP WORK IMMEDIATELY WHEN MATERIAL RESEMBLING POLYCHLORINATED BIPHENYL IS ENCOUNTERED DURING DEMOLITION WORK. NOTIFY CONSULTANT.
MOULD: STOP WORK IMMEDIATELY WHEN MATERIAL RESEMBLING MOULD IS ENCOUNTERED DURING DEMOLITION WORK. NOTIFY CONSULTANT.
BUILDING SMOKING ENVIRONMENT:
COMPLY WITH SMOKING RESTRICTIONS AND MUNICIPAL BY-LAWS.

QUALITY CONTROL

- TOLERANCES:
UNLESS MORE STRINGENT TOLERANCES ARE REQUIRED BY A SECTION OF THE SPECIFICATIONS OR A REFERENCED STANDARD, MEET THE FOLLOWING TOLERANCES FOR INSTALLED WORK:
"PLUMB" SHALL MEAN PLUMB WITHIN 3 MM IN 3 M.
"LEVEL" SHALL MEAN LEVEL WITHIN 3 MM IN 3 M.
"SQUARE" SHALL MEAN NOT IN EXCESS OF 10 SECONDS LESS OR MORE THAN 90.
"STRAIGHT" SHALL MEAN WITHIN 3 MM IN 3 M UNDER A 3 M STRAIGHT EDGE.
BUILDING COMPONENTS:
REQUIREMENTS SPECIFIED HEREIN APPLY TO ALL ELEMENTS OF THE BUILDING COMPONENTS.
CONTINUITY OF FIRE SEPARATIONS AND INSULATION COMPONENTS ARE CRITICAL AND MUST BE MAINTAINED AT ALL LOCATIONS. WHERE DIFFERENT SYSTEMS MEET, ENSURE PROPER INTERFACE AND CONTINUITY BETWEEN ADJACENT COMPONENTS BY IMPLEMENTING SUITABLE CONSTRUCTION SEQUENCES AND BY USING COMPATIBLE MATERIALS ONLY.
PROVIDE CONTROL JOINTS IN INTERIOR BUILDING COMPONENTS OF DESIGN AND SPACING WHICH WILL PERMIT EXPANSION AND CONTRACTION OF COMPONENTS WITHOUT CAUSING DISTORTION, FAILURE OF JOINT SEALS, UNDUE STRESS, CRACKING, BOWING OR OTHER DEFECTS DETRIMENTAL TO APPEARANCE AND PERFORMANCE. REVIEW DESIGN AND LOCATION OF CONTROL JOINTS WITH CONSULTANT PRIOR TO START OF WORK AND FOLLOW DIRECTIONS GIVEN BY CONSULTANT.
ENSURE THAT AIR SPACES WITHIN BUILDING COMPONENTS ARE FIRESTOPPED IN ACCORDANCE WITH APPLICABLE REGULATIONS.

CONSTRUCTION FACILITIES

- REMOVE CONSTRUCTION DEBRIS, WASTE MATERIALS, PACKAGING MATERIAL FROM WORK SITE DAILY.
CLEAN DIRT OR MUD TRACKED ONTO PAVED OR SURFACED ROADWAYS.
STORE MATERIALS RESULTING FROM DEMOLITION ACTIVITIES THAT ARE SALVAGEABLE.
STACK STORED NEW OR SALVAGED MATERIAL NOT IN CONSTRUCTION FACILITIES.

TEMPORARY BARRIERS AND ENCLOSURES

- PUBLIC TRAFFIC FLOW:
PROVIDE AND MAINTAIN COMPETENT SIGNAL FLAG OPERATORS, TRAFFIC SIGNALS, BARRICADES AND FLARES, LIGHTS, OR LANTERNS AS REQUIRED TO PERFORM WORK AND PROTECT PUBLIC.
FIRE ROUTES:
MAINTAIN ACCESS TO PROPERTY INCLUDING OVERHEAD CLEARANCES FOR USE BY EMERGENCY RESPONSE VEHICLES.
PROTECTION FOR OFF-SITE AND PUBLIC PROPERTY:
PROTECT SURROUNDING PRIVATE AND PUBLIC PROPERTY FROM DAMAGE DURING PERFORMANCE OF WORK.
BE RESPONSIBLE FOR DAMAGE INCURRED.

COMMON PRODUCT REQUIREMENTS

- MANUFACTURER'S INSTRUCTIONS:
UNLESS OTHERWISE INDICATED IN SPECIFICATIONS, INSTALL OR ERECT PRODUCTS IN ACCORDANCE WITH MANUFACTURER'S INSTRUCTIONS. DO NOT RELY ON LABELS OR ENCLOSURES PROVIDED WITH PRODUCTS. OBTAIN WRITTEN INSTRUCTIONS DIRECTLY FROM MANUFACTURERS.
NOTIFY CONSULTANT IN WRITING, OF CONFLICTS BETWEEN SPECIFICATIONS AND MANUFACTURER'S INSTRUCTIONS, SO THAT CONSULTANT WILL ESTABLISH COURSE OF ACTION.
IMPROPER INSTALLATION OR ERECTION OF PRODUCTS, DUE TO FAILURE IN COMPLYING WITH THESE REQUIREMENTS, AUTHORIZES CONSULTANT TO REQUIRE REMOVAL AND RE-INSTALLATION AT NO INCREASE IN CONTRACT PRICE OR CONTRACT TIME.

CO-ORDINATION:

- ENSURE CO-OPERATION OF WORKERS IN LAYING OUT WORK. MAINTAIN EFFICIENT AND CONTINUOUS SUPERVISION.
BE RESPONSIBLE FOR COORDINATION AND PLACEMENT OF OPENINGS, SLEEVES AND ACCESSORIES.

EXECUTION

- PRODUCTS:
UNLESS OTHERWISE SPECIFIED, WHEN REPLACING EXISTING OR PREVIOUSLY INSTALLED PRODUCTS IN THE COURSE OF CUTTING AND PATCHING WORK, USE REPLACEMENT PRODUCTS OF THE SAME CHARACTER AND QUALITY AS THOSE BEING REPLACED.
IF AN EXISTING OR PREVIOUSLY INSTALLED PRODUCT MUST BE REPLACED WITH A DIFFERENT PRODUCT, SUBMIT REQUEST FOR SUBSTITUTION.
PREPARATION:
INSPECT EXISTING CONDITIONS, INCLUDING ELEMENTS SUBJECT TO DAMAGE OR MOVEMENT DURING CUTTING AND PATCHING.
AFTER UNCOVERING, INSPECT CONDITIONS AFFECTING PERFORMANCE OF WORK.
BEGINNING OF CUTTING OR PATCHING MEANS ACCEPTANCE OF EXISTING CONDITIONS.
PROVIDE SUPPORTS TO ASSURE STRUCTURAL INTEGRITY OF SURROUNDINGS; PROVIDE DEVICES AND METHODS TO PROTECT OTHER PORTIONS OF PROJECT FROM DAMAGE.
PROVIDE PROTECTION FROM ELEMENTS FOR AREAS WHICH ARE TO BE EXPOSED BY UNCOVERING WORK; MAINTAIN EXCAVATIONS FREE OF WATER.
EXECUTION:
EXECUTE CUTTING, FITTING, AND PATCHING INCLUDING EXCAVATION AND FILL, TO COMPLETE WORK.
FIT SEVERAL PARTS TOGETHER, TO INTEGRATE WITH OTHER WORK.
UNCOVER WORK TO INSTALL ILL-TIMED WORK.
REMOVE AND REPLACE DEFECTIVE AND NON-CONFORMING WORK.
PROVIDE OPENINGS IN NON-STRUCTURAL ELEMENTS OF WORK FOR PENETRATIONS OF MECHANICAL AND ELECTRICAL WORK.
EXECUTE WORK BY METHODS TO AVOID DAMAGE TO OTHER WORK, AND WHICH WILL PROVIDE PROPER SURFACES TO RECEIVE PATCHING AND FINISHING.
EMPLOY ORIGINAL INSTALLER TO PERFORM CUTTING AND PATCHING FOR WEATHER-EXPOSED AND MOISTURE-RESISTANT ELEMENTS, AND SIGHT-EXPOSED SURFACES.
CUT RIGID MATERIALS USING MASONRY SAW OR CORE DRILL. PNEUMATIC OR IMPACT TOOLS NOT ALLOWED ON MASONRY WORK WITHOUT PRIOR APPROVAL.
RESTORE WORK WITH NEW PRODUCTS IN ACCORDANCE WITH REQUIREMENTS OF CONTRACT DOCUMENTS.
FIT WORK TO PIPES, SLEEVES, DUCTS, CONDUIT, AND OTHER PENETRATIONS THROUGH SURFACES.
MAINTAIN FIRE RATINGS OF FIRE RATED ASSEMBLIES WHERE CUTTING, PATCHING, OR REMEDIAL WORK IS PERFORMED. COMPLETELY SEAL VOIDS OR PENETRATIONS OF ASSEMBLY WITH FIRESTOPPING MATERIAL TO FULL DEPTH OR WITH SUITABLY RATED DEVICES.
REFINISH SURFACES TO MATCH ADJACENT FINISHES; REFINISH CONTINUOUS SURFACES TO NEAREST INTERSECTION. REFINISH ASSEMBLIES BY REFINISHING ENTIRE UNIT.
CONCEAL PIPES, DUCTS AND WIRING IN FLOOR, WALL AND CEILING CONSTRUCTION OF FINISHED AREAS EXCEPT WHERE INDICATED OTHERWISE.

CLEANING

- FINAL CLEANING:
MAKE ARRANGEMENTS WITH AND OBTAIN PERMITS FROM AUTHORITIES HAVING JURISDICTION FOR DISPOSAL OF WASTE AND DEBRIS.
INSPECT FINISHES, FITMENTS AND EQUIPMENT AND ENSURE SPECIFIED WORKMANSHIP AND OPERATION.

DEMOLITION:

- SITE CONDITIONS:
REVIEW DESIGNATED SUBSTANCE REPORT AND TAKE PRECAUTIONS TO PROTECT ENVIRONMENT, WORKERS AND BUILDING OCCUPANTS.
PROTECTION:

- PREVENT MOVEMENT, SETTLEMENT, OR DAMAGE TO ADJACENT STRUCTURES, UTILITIES, AND PARTS OF BUILDING TO REMAIN IN PLACE. PROVIDE BRACING AND SHORING REQUIRED.
KEEP NOISE, DUST, AND INCONVENIENCE TO OCCUPANTS TO MINIMUM.
PROTECT BUILDING SYSTEMS, SERVICES AND EQUIPMENT SCHEDULED TO REMAIN.
PROVIDE TEMPORARY DUST SCREENS, COVERS, RAILINGS, SUPPORTS AND OTHER PROTECTION AS REQUIRED.
DEMOLITION SALVAGE AND DISPOSAL:
REMOVE PARTS OF EXISTING BUILDING TO PERMIT NEW CONSTRUCTION.
REFER TO DEMOLITION DRAWINGS AND SPECIFICATIONS FOR ITEMS TO BE SALVAGED FOR REUSE.
REMOVE ITEMS TO BE REUSED, STORE AS DIRECTED BY CONSULTANT, AND RE-INSTALL UNDER APPROPRIATE SECTION OF SPECIFICATION.
TRIM EDGES OF PARTIALLY DEMOLISHED BUILDING ELEMENTS TO TOLERANCES AS INDICATED AND/OR DEFINED BY CONSULTANT TO SUIT FUTURE USE.
CLEANING AND RESTORATION:
UPON COMPLETION OF PROJECT, REINSTATE AREAS AFFECTED BY WORK TO CONDITION WHICH EXISTED PRIOR TO BEGINNING OF WORK.

ALTERATION PROCEDURES:

- QUALITY ASSURANCE:
COMPLY WITH THE REQUIREMENTS OF THE ONTARIO BUILDING CODE, ONTARIO OCCUPATIONAL HEALTH AND SAFETY ACT AND ALL OTHER STANDARDS AND REGULATIONS NOTED.
ALL WORK PERFORMED AND MATERIALS USED SHALL BE OF THE SAME STANDARD OF QUALITY AS THAT OF THE EXISTING FINISHED BUILDING AS A MINIMUM.
ANY WELDING SHALL BE PERFORMED BY WELDERS CERTIFIED IN ACCORDANCE WITH CSA W47, AND SHALL CONFORM TO CSA W59.
PATCH, EXTEND AND FINISH WORK USING ONLY SKILLED MECHANICS CAPABLE OF MATCHING THE EXISTING QUALITY OR WORKMANSHIP, OR AS OTHERWISE INDICATED. THE QUALITY OF PATCHED OR EXTENDED WORK TO BE PERFORMED AS SPECIFIED IN THE FOLLOWING PRODUCT AND EXECUTION SPECIFICATIONS.
ALTERATIONS, CUTTING AND PATCHING:
EXTENT:
PERFORM CUTTING AND REMOVAL WORK SO AS NOT TO CUT OR REMOVE MORE THAN IS NECESSARY AND SO AS NOT TO DAMAGE ADJACENT WORK.
ASSIGN WORK OF MOVING, REMOVAL, CUTTING AND PATCHING AND REPAIR TO TRADES UNDER HIS/HER SUPERVISION SO AS TO CAUSE THE LEAST DAMAGE TO EACH TYPE OF WORK ENCOUNTERED, AND SO AS TO RETURN THE BUILDING AS MUCH AS POSSIBLE TO THE APPEARANCE OF NEW WORK.
PROTECTION:
PROTECT REMAINING FINISHES, EQUIPMENT AND ADJACENT WORK FROM DAMAGE CAUSED BY CUTTING, MOVING, REMOVAL AND PATCHING OPERATIONS. PROTECT SURFACES TO REMAIN AS PART OF THE FINISHED WORK.
PATCHING, EXTENDING AND MATCHING:
PATCHING:
IN AREAS WHERE ANY PORTION OF AN EXISTING FINISHED SURFACE IS DAMAGED, LIFTED, STAINED, PEELING, CRACKED, OR OTHERWISE MADE OR FOUND TO BE IMPERFECT, PATCH OR REPLACE IMPERFECT SURFACES WITH MATCHING MATERIAL.
DO NOT INCORPORATE SALVAGED MATERIAL IN NEW WORK UNLESS OTHERWISE NOTED OR APPROVED BY CONSULTANT IN WRITING.
PROVIDE ADEQUATE SUPPORT OR SUBSTRATE FOR PATCHING AND FINISHING.
FOR PAINTED AND/OR COATED IMPERFECT SURFACES, REMOVE LOOSE MATERIAL, PATCH, SAND AND REPAINT OR RECOAT THE PATCHED PORTION TO OBTAIN A UNIFORM COLOUR AND TEXTURE OVER THE ENTIRE SURFACE.
REPAINT OR RECOAT ENTIRE SURFACE WHERE SURROUNDING AND/OR ADJACENT SURFACES CANNOT BE MATCHED.
QUALITY:
THE QUALITY OF THE PRODUCTS THAT EXIST IN THE BUILDING, AS APPARENT DURING PRE-BID SITE VISITS, SHALL SERVE AS THE MINIMUM SPECIFICATION REQUIREMENT FOR STRENGTH, APPEARANCE AND OTHER CHARACTERISTICS.
TRANSITIONS:
WHERE NEW WORK ABUTS OR FINISHES FLUSH WITH EXISTING WORK, MAKE THE TRANSITION AS SMOOTH AND WORKMANLIKE AS POSSIBLE. PERFORM PATCHING WORK TO MATCH EXISTING ADJACENT WORK IN TEXTURE AND APPEARANCE SO AS TO MAKE THE PATCH OR TRANSITION INVISIBLE TO THE EYE AT A DISTANCE OF ONE (1) METER / 3'.
IN CASES OF EXTREME CHANGE OF LEVEL SUCH AS 50MM / 2" OR MORE, OBTAIN INSTRUCTIONS FROM CONSULTANT AS TO METHOD OF MAKING TRANSITION. PROVIDE STEPPING, BULKHEADING, ENCASEMENT, RAMPING, SLOPING OR CHANGE OF TRANSITION LINE, OR ANY COMBINATION OF THESE AS DIRECTED IN EACH CASE BY CONSULTANT.

MATCHING:

- RESTORE EXISTING WORK THAT IS DAMAGED DURING CONSTRUCTION TO A CONDITION EQUAL TO ITS CONDITION AT THE TIME OF THE START OF SUCH WORK.
THESE SPECIFICATIONS ARE NOT INTENDED TO DESCRIBE EXISTING PRODUCTS OR STANDARDS OF EXECUTION, NOR WILL THEY ENUMERATE PRODUCTS, WHICH ARE NOT PART OF THE NEW CONSTRUCTION. THE EXISTING PRODUCT IS ITS OWN SPECIFICATION.
THE PRESENCE OF ANY PRODUCT OR TYPE OF CONSTRUCTION IN OLD WORK SHALL CAUSE ITS PATCHING, EXTENDING OR MATCHING TO BE PERFORMED AS NECESSARY TO MAKE NEW WORK COMPLETE AND CONSISTENT, TO IDENTICAL STANDARDS OF QUALITY.

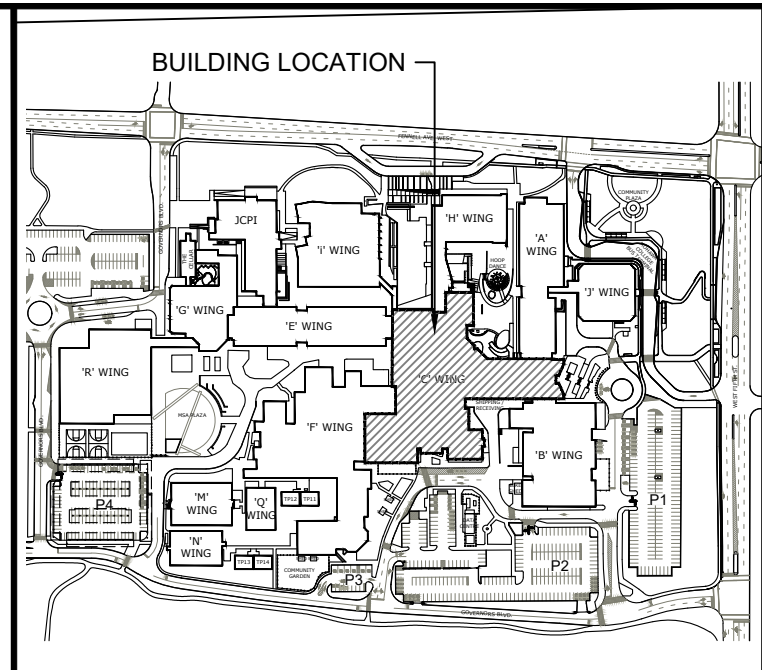
SUBMITTAL PROCEDURES

- ADMINISTRATIVE:
SUBMIT TO CONSULTANT SUBMITTALS FOR REVIEW. SUBMIT PROMPTLY AND IN ORDERLY SEQUENCE TO NOT CAUSE DELAY IN WORK. FAILURE TO SUBMIT IN AMPLE TIME IS NOT CONSIDERED SUFFICIENT REASON FOR EXTENSION OF CONTRACT TIME AND NO CLAIM FOR EXTENSION BY REASON OF SUCH DEFAULT WILL BE ALLOWED.
DO NOT PROCEED WITH WORK AFFECTED BY SUBMITTAL UNTIL REVIEW IS COMPLETE.

- PRESENT SHOP DRAWINGS, PRODUCT DATA AND SAMPLES.
REVIEW SUBMITTALS PRIOR TO SUBMISSION TO CONSULTANT. THIS REVIEW REPRESENTS THAT NECESSARY REQUIREMENTS HAVE BEEN DETERMINED AND VERIFIED, OR WILL BE, AND THAT EACH SUBMITTAL HAS BEEN CHECKED AND CO-ORDINATED WITH REQUIREMENTS OF WORK AND CONTRACT DOCUMENTS. SUBMITTALS NOT STAMPED, SIGNED, DATED AND IDENTIFIED AS TO SPECIFIC PROJECT WILL BE RETURNED WITHOUT BEING EXAMINED AND CONSIDERED REJECTED.
NOTIFY CONSULTANT, IN WRITING AT TIME OF SUBMISSION, IDENTIFYING DEVIATIONS FROM REQUIREMENTS OF CONTRACT DOCUMENTS STATING REASONS FOR DEVIATIONS.
VERIFY FIELD MEASUREMENTS AND AFFECTED ADJACENT WORK ARE CO-ORDINATED.
CONTRACTOR'S RESPONSIBILITY FOR ERRORS AND OMISSIONS IN SUBMISSION IS NOT RELIEVED BY CONSULTANT'S REVIEW OF SUBMITTALS.
CONTRACTOR'S RESPONSIBILITY FOR DEVIATIONS IN SUBMISSION FROM REQUIREMENTS OF CONTRACT DOCUMENTS IS NOT RELIEVED BY CONSULTANT REVIEW.

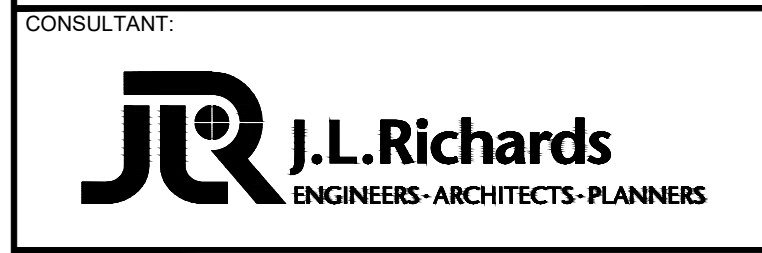
SHOP DRAWING AND PRODUCT DATA:

- THE TERM "SHOP DRAWINGS" MEANS DRAWINGS, DIAGRAMS, ILLUSTRATIONS, SCHEDULES, PERFORMANCE CHARTS, BROCHURES AND OTHER DATA WHICH ARE TO BE PROVIDED BY CONTRACTOR TO ILLUSTRATE DETAILS OF A PORTION OF WORK.
SUBMIT SHOP DRAWINGS FOR EACH SPECIFICATION SECTION.
DO NOT PROCEED WITH ANY COMPONENT OF THE WORK NOR PROVIDE PRODUCTS WITHOUT REVIEWED SHOP DRAWINGS BEING ACCEPTED AND RETURNED TO THE CONTRACTOR. SHOULD WORK COMMENCE, OR PRODUCTS BE SUPPLIED PRIOR TO CONTRACTOR'S RECEIPT OF REVIEWED SHOP DRAWINGS, THE CONTRACTOR SHALL BE LIABLE FOR ALL CORRECTIONS AND COSTS INCURRED.
INDICATE MATERIALS, METHODS OF CONSTRUCTION AND ATTACHMENT OR ANCHORAGE, ERECTION DIAGRAMS, CONNECTIONS, EXPLANATORY NOTES AND OTHER INFORMATION NECESSARY FOR COMPLETION OF WORK. WHERE ARTICLES CONNECT TO OTHER ARTICLES, INDICATE THAT SUCH ITEMS HAVE BEEN CO-ORDINATED, REGARDLESS OF SECTION UNDER WHICH ADJACENT ITEMS WILL BE SUPPLIED AND INSTALLED. INDICATE CROSS REFERENCES TO DESIGN DRAWINGS AND SPECIFICATIONS.
ALLOW 10 DAYS FOR CONSULTANT TO REVIEW AND RETURN EACH SHOP DRAWING SUBMISSION.
ADJUSTMENTS MADE ON SHOP DRAWINGS BY CONSULTANT ARE NOT INTENDED TO CHANGE CONTRACT PRICE OR CONTRACT TIME. IF ADJUSTMENTS AFFECT VALUE OF WORK OR THE CONSTRUCTION SCHEDULE, STATE SUCH IN WRITING TO CONSULTANT PRIOR TO PROCEEDING WITH WORK.
MAKE CHANGES IN SHOP DRAWINGS AS CONSULTANT MAY REQUIRE, CONSISTENT WITH CONTRACT DOCUMENTS. WHEN RESUBMITTING, NOTIFY CONSULTANT IN WRITING OF REVISIONS OTHER THAN THOSE REQUESTED.
ACCOMPANY SUBMISSIONS WITH TRANSMITTAL LETTER CONTAINING:
DATE.
PROJECT TITLE AND NUMBER.
CONTRACTOR'S NAME AND ADDRESS.
IDENTIFICATION OF SHOP DRAWING, PRODUCT DATA AND SAMPLE.
OTHER PERTINENT DATA.
SUBMISSIONS INCLUDE:
DATE AND REVISION DATES.
PROJECT TITLE AND NUMBER.
NAME AND ADDRESS OF:
SUBCONTRACTOR.
SUPPLIER.
MANUFACTURER.
DETAILS OF APPROPRIATE PORTIONS OF WORK AS APPLICABLE:
FABRICATION.
LAYOUT, SHOWING DIMENSIONS, FIELD DIMENSIONS, AND CLEARANCES.
SETTING OR ERECTION DETAILS.
PERFORMANCE CHARACTERISTICS.
RELATIONSHIP TO ADJACENT WORK.
SHOULD THE CONSULTANT DEEM THAT THE CONTRACTOR HAS NOT COMPLIED WITH THE REQUIREMENTS OF THIS SECTION, THE CONTRACTOR SHALL BE HELD FULLY RESPONSIBLE FOR ALL DELAYS IN THE WORK TO THE SAME EXTENT AS IF NO SHOP DRAWINGS OR DETAILS HAD BEEN SUBMITTED FOR THAT SECTION OF THE WORK.
SUBMIT ELECTRONIC COPIES OF PRODUCT DATA SHEETS, TEST REPORTS, MANUFACTURER'S INSTRUCTIONS AND OPERATION AND MAINTENANCE DATA FOR EACH SPECIFICATION SECTIONS.
DELETE INFORMATION NOT APPLICABLE TO PROJECT.
SUPPLEMENT STANDARD INFORMATION TO PROVIDE DETAILS APPLICABLE TO PROJECT.
IF UPON REVIEW BY CONSULTANT, NO ERRORS OR OMISSIONS ARE DISCOVERED OR IF ONLY MINOR CORRECTIONS ARE MADE, ELECTRONIC COPIES STAMPED BY THE CONSULTANT COMPLETE WITH APPROPRIATE COMMENTS WHERE APPLICABLE WILL BE RETURNED AND FABRICATION AND INSTALLATION OF WORK MAY PROCEED. IF SHOP DRAWINGS ARE REJECTED, NOTED COPY WILL BE RETURNED AND RESUBMISSION OF CORRECTED SHOP DRAWINGS, THROUGH SAME PROCEDURE INDICATED ABOVE, MUST BE PERFORMED BEFORE FABRICATION AND INSTALLATION OF WORK MAY PROCEED. IF UPON REVIEW BY THE CONSULTANT, NO ERRORS OR OMISSIONS ARE DISCOVERED OR IF ONLY MINOR CORRECTIONS ARE MADE, ELECTRONIC COPIES STAMPED BY THE CONSULTANT COMPLETE WITH APPROPRIATE COMMENTS WHERE APPLICABLE WILL BE RETURNED ELECTRONICALLY IN PDF FORMAT AND FABRICATION AND INSTALLATION OF WORK MAY PROCEED. IF SHOP DRAWINGS ARE REJECTED, RESUBMISSION PROCEDURE INDICATED ABOVE, SHALL BE REPEATED PRIOR TO FABRICATION AND INSTALLATION OF WORK.
SAMPLES:
SUBMIT SAMPLES FOR EACH PRODUCT TOGETHER IN ONE (1) SUBMISSION WITH ALL OTHER REQUIRED SUBMITTALS FOR THE VARIOUS SPECIFICATION SECTIONS. SUBMITTALS FOR THE BUILDING INTERIOR MAY HOWEVER BE SUBMITTED INDEPENDENTLY FROM THAT FOR THE BUILDING EXTERIOR.
SUBMIT FOR REVIEW SAMPLES IN DUPLICATE AS REQUESTED IN RESPECTIVE SPECIFICATION SECTIONS. LABEL SAMPLES WITH ORIGIN AND INTENDED USE.
DELIVER SAMPLES PREPAID TO CONSULTANT'S OFFICE.
NOTIFY CONSULTANT IN WRITING, AT TIME OF SUBMISSION OF DEVIATIONS IN SAMPLES FROM REQUIREMENTS OF CONTRACT DOCUMENTS.
WHERE COLOUR, PATTERN OR TEXTURE IS CRITERION, SUBMIT FULL RANGE OF SAMPLES.
ADJUSTMENTS MADE ON SAMPLES BY CONSULTANT ARE NOT INTENDED TO CHANGE CONTRACT PRICE OR CONTRACT TIME. IF ADJUSTMENTS AFFECT VALUE OF WORK OR CONTRACT TIME, STATE SUCH IN WRITING TO CONSULTANT PRIOR TO PROCEEDING WITH WORK.
MAKE CHANGES IN SAMPLES WHICH CONSULTANT MAY REQUIRE, CONSISTENT WITH CONTRACT DOCUMENTS.
REVIEWED AND ACCEPTED SAMPLES WILL BECOME STANDARD OF WORKMANSHIP AND MATERIAL AGAINST WHICH INSTALLED WORK WILL BE VERIFIED.



KEY PLAN

Table with columns: No., ISSUE / REVISION, DDMMYY. Includes revision history for ISSUED FOR TENDER (12/04/24) and ISSUED FOR 100% CLIENT REVIEW (22/03/24). Includes disclaimer text and scale bar (0 to 25mm).



PROJECT: MOHAWK COLLEGE - FENNEL CAMPUS - C-WING; WINDOW REPLACEMENT
135 FENNEL AVENUE WEST, HAMILTON, ON L9C 035

SPECIFICATIONS
DESIGN:
DRAWN:
CHECKED:
JLR #: 31830-017
DRAWING #:
A03

SHEET METAL FLASHING AND TRIM:

- .1 PRODUCTS:
 - .1 PRE-FINISHED METAL FLASHINGS: CLASS F1S, GALVANIZED STEEL, MINIMUM TEMPER ROLLED ACCORDANCE WITH ASTM A446, TYPE, COLOUR AND THICKNESS TO MATCH METAL CLADDING; FACTORY APPLIED SILICONE MODIFIED POLYESTER FINISH SHALL BE SERIES 5000 PRECOATING BY DOMINION FOUNDRIES AND STEEL LIMITED OR THE STEEL COMPANY OF CANADA LIMITED.
 - .1 PREFINISHED 'STANDARD' AND 'EXTENDED' COLOUR RANGES SERIES WITH COATING THICKNESS NOT LESS THAN 20 MICROMETERS.
 - .1 ACCEPTABLE PRODUCT: 'COLORITE' BY VICWEST OR APPROVED ALTERNATE.
 - .2 PREFINISHED METAL SILLS, FULL LENGTH, OF TYPE AND SIZE AND PROFILE INDICATED, 22 GAUGE METAL C/W DRIP, CHAIRS, ANCHORING DEVICES AND END DAMNS.
 - .3 SHAPE AND SIZE: AS DETAILED ON DRAWINGS, WITH MINIMUM 2% DRAINAGE SLOPE TO EXTERIOR.
 - .2 ACCESSORIES:
 - .1 ISOLATION COATING: ALKALI RESISTANT BITUMINOUS PAINT.
 - .2 PLASTIC CEMENT: TO CAN/CGSB 37.5.
 - .3 CLEATS: OF SAME MATERIAL, AND TEMPER AS SHEET METAL, MINIMUM 2" WIDE.
 - .4 FASTENERS: OF SAME MATERIAL AS SHEET METAL, TO CSA B111, FLAT HEAD ROOFING NAILS OF LENGTH AND THICKNESS SUITABLE FOR METAL FLASHING APPLICATION.
 - .5 WASHERS: OF SAME MATERIAL AS SHEET METAL, 0.039" THICK WITH RUBBER PACKINGS.
 - .6 TOUCH-UP PAINT: AS RECOMMENDED BY PREFINISHED MATERIAL MANUFACTURER.
 - .3 FABRICATION:
 - .1 FORM FLASHINGS, COPINGS AND FASCIAS TO SIZES AND PROFILES INDICATED.
 - .2 FABRICATE METAL FLASHINGS, SILLS AND OTHER SHEET METAL WORK IN ACCORDANCE WITH APPLICABLE CRCA 'FL' SERIES DETAILS.
 - .3 FORM PIECES IN 8'-0" MINIMUM LENGTHS. MAKE ALLOWANCE FOR EXPANSION AT JOINTS.
 - .4 HEM EXPOSED EDGES ON UNDERSIDE 1/2". MITRE AND SEAL CORNERS WITH SEALANT.
 - .5 FORM SECTIONS SQUARE, TRUE AND ACCURATE TO SIZE, FREE FROM DISTORTION AND OTHER DEFECTS DETRIMENTAL TO APPEARANCE OR PERFORMANCE.
 - .6 APPLY ISOLATION COATING TO METAL SURFACES TO BE EMBEDDED IN CONCRETE OR MORTAR.

JOINT SEALANTS:

- .1 EXTERIOR USE:
 - .1 ALL AREAS UNLESS SPECIFIED OTHERWISE: ONE PART MOISTURE CURING POLYURETHANE, SELF-LEVELING TO CAN/CGSB-19.13, CLASS MC-2-25-B-N:
 - .1 ACCEPTABLE PRODUCT: 'DYMONIC 100' BY TREMCO LTD, OR APPROVED ALTERNATE.
 - .2 PREFINISHED METAL TO PREFINISHED METAL: ONE PART BLEND OF SYNTHETIC RUBBER AND RESIN, SELF LEVELING TO CAN/CGSB 7.1:
 - .1 ACCEPTABLE PRODUCT: 'GUTTER SEAL+' BY TREMCO OR APPROVED ALTERNATE.
 - .3 GLASS TO GLASS, GLASS TO METAL AND METAL TO METAL CURTAIN WALL JOINTS: MEDIUM MODULUS, MOISTURE CURING, ONE PART SILICONE SEALANT, MEETING THE SPECIFIED REQUIREMENTS OF CAN/CGSB-19.13, CLASSIFICATION MCG-2-25-A-L:
 - .1 ACCEPTABLE PRODUCT: 'SPECTREM 2' BY TREMCO OR APPROVED ALTERNATE.
- .2 INTERIOR USE:
 - .1 INTERIOR GENERAL APPLICATION (ALL AREAS UNLESS SPECIFIED OTHERWISE): TO CAN/CGSB-19.14M:
 - .1 ACCEPTABLE PRODUCT: 'TREM-FLEX 834' BY TREMCO OR APPROVED ALTERNATE.
 - .3 SEALANT COLOURS: COLOURS OF EXPOSED SEALANTS AS LATER SELECTED BY CONSULTANT FROM MANUFACTURER'S STANDARD COLOUR RANGE.
 - .4 INSTALLATION: COMPLY WITH MANUFACTURER'S WRITTEN DATA, INCLUDING PRODUCT TECHNICAL BULLETINS, PRODUCT CATALOGUE INSTALLATION INSTRUCTIONS, PRODUCT CARTON INSTALLATION INSTRUCTIONS, AND DATA SHEETS.

ALUMINUM WINDOWS:

- .1 SHOP DRAWINGS:
 - .1 SUBMIT SHOP DRAWINGS TO INDICATE MATERIALS AND DETAILS FOR HEAD, JAMB AND SILL, PROFILES OF COMPONENTS, INTERIOR AND EXTERIOR TRIM, ELEVATIONS OF UNIT, ANCHORAGE DETAILS, LOCATION OF ISOLATION COATING, DESCRIPTION OF RELATED COMPONENTS AND EXPOSED FINISHES, FASTENERS, AND CAULKING.
- .2 MATERIALS
 - .1 MATERIALS: TO CSA-A440/A440.1 SUPPLEMENTED AS FOLLOWS:
 - .2 ALL WINDOWS BY SAME MANUFACTURER.
 - .3 SASH: ALUMINUM THERMALLY BROKEN.
 - .4 MAIN FRAME: ALUMINUM THERMALLY BROKEN.
 - .5 ALUMINUM SUPPORT ANGLES: DESIGN AND FABRICATE ALUMINUM SUPPORT ANGLES AT SILL, JAMBS AND HEAD IN ACCORDANCE WITH OBC AND MANUFACTURERS REQUIREMENTS.
 - .6 GLASS: IN ACCORDANCE WITH GLAZING.
 - .7 FLASHINGS: REFER TO SHEET METAL FLASHING AND TRIM.
 - .8 TRANSITION SHEET AIR / VAPOUR BARRIER MEMBRANE:
 - .1 ACCEPTABLE PRODUCT: 'BLUESKIN SA', BY HENRY COMPANY CANADA, 'AQUABARRIER AVB' BY IKO, OR 'SOPRASEAL 60', BY SOPREMA, OR APPROVED ALTERNATE.
 - .9 THRU WALL FLASHING MEMBRANE:
 - .1 RUBBERIZED REINFORCED ASPHALT COMPOUND, SELF-ADHERED MEMBRANE, 1.0MM THICK, WIDTH TO SUITE APPLICATION.
 - .2 ACCEPTABLE PRODUCT: 'BLUESKIN TWIF' BY HENRY COMPANY CANADA, 'AQUABARRIER TWIF' BY IKO, OR 'SOPRASEAL WFM' BY SOPREMA, OR APPROVED ALTERNATE.
 - .10 SILLS: REFER TO SHEET METAL FLASHING AND TRIM.

- .11 ISOLATION COATING: ALKALI RESISTANT BITUMINOUS PAINT.
- .12 SEALANTS: REFER TO JOINT SEALANTS.
- .13 SPRAY FOAM INSULATION: CAN/ULC S705.1, CFC FREE, POLYURETHANE FOAM IN PLACE, CLOSED CELL, LOW EXPANSION, ONE COMPONENT AIR SEALANT, MINIMUM DENSITY 15 KG/M3.
- .3 WINDOW TYPE AND CLASSIFICATION
 - .1 TYPES:
 - .1 FIXED WINDOW UNIT, 5" WIDE, C/W THERMAL BREAK.
 - .1 ACCEPTABLE PRODUCT: 'RAINBLADE 1990' BY ALUMICOR, '518 THERMAL WINDOWS' BY KAWNEER, OR APPROVED ALTERNATE BY OLDCASTLE BUILDING ENVELOPE.
 - .2 FIXED WINDOW UNIT, FOR REDUCED SILL INSTALLATION DEPTH OF 2" TO 3" WIDE c/w THERMAL BREAK.
 - .1 ACCEPTABLE PRODUCT: 'VERSAWALL MIDLINE 2200' BY ALUMICOR, 'OPTIQ AA 4325' BY KAWNEER, OR APPROVED ALTERNATE BY OLDCASTLE BUILDING ENVELOPE.
- .4 FABRICATION
 - .1 FABRICATE IN ACCORDANCE WITH CSA-A440/A440.1 SUPPLEMENTED AS FOLLOWS:
 - .2 FABRICATE UNITS SQUARE AND TRUE WITH MAXIMUM TOLERANCE OF PLUS OR MINUS 1/16" FOR UNITS WITH A DIAGONAL MEASUREMENT OF 6'-0" OR LESS AND PLUS OR MINUS 1/8" FOR UNITS WITH A DIAGONAL MEASUREMENT OVER 6'-0".
 - .3 FACE DIMENSIONS DETAILED ARE MAXIMUM PERMISSIBLE SIZES.
 - .4 BRACE FRAMES TO MAINTAIN SQUARENESS AND RIGIDITY DURING SHIPMENT AND INSTALLATION.
 - .5 FINISH STEEL CLIPS AND REINFORCEMENT WITH SHOP COAT PRIMER TO MPI #79.
- .5 ALUMINUM FINISHES
 - .1 FINISH EXPOSED SURFACES OF ALUMINUM COMPONENTS IN ACCORDANCE WITH ALUMINUM ASSOCIATION DESIGNATION SYSTEM FOR ALUMINUM FINISHES.
 - .1 FINISH COATINGS: FINISH ALL EXPOSED SURFACES OF INTERIOR AND EXTERIOR ALUMINUM SECTIONS WITH ANODIC OXIDE TREATMENT IN ACCORDANCE WITH ALUMINUM ASSOCIATION SPECIFICATION AA-M12C22A31, #40 DARK BRONZE BY KAWNEER, OR EQUIVALENT BY ALUMICOR CANADA LIMITED, OR OLDCASTLE BUILDING ENVELOPE, OR APPROVED ALTERNATE.
- .6 ISOLATION COATING
 - .1 IN ACCORDANCE WITH MANUFACTURER'S RECOMMENDATIONS FOR SURFACE CONDITIONS.
 - .2 ISOLATE ALUMINUM FROM FOLLOWING COMPONENTS, BY MEANS OF ISOLATION COATING:
 - .1 DISSIMILAR METALS EXCEPT STAINLESS STEEL, ZINC, OR WHITE BRONZE OF SMALL AREA.
 - .2 CONCRETE, MORTAR AND MASONRY.
 - .3 WOOD.
- .7 AIR BARRIER /VAPOUR BARRIER SEAL
 - .1 PROVIDE POSITIVE AIR / VAPOUR / WATERTIGHT SEAL BETWEEN WINDOW FRAMES AND EXTERIOR WALL SYSTEM USING AIR / VAPOUR BARRIER TRANSITION STRIP.
- .8 INSTALLATION:
 - .1 MANUFACTURER'S INSTRUCTIONS: COMPLY WITH MANUFACTURER'S WRITTEN RECOMMENDATIONS, INCLUDING PRODUCT TECHNICAL BULLETINS, PRODUCT CATALOGUE INSTALLATION INSTRUCTIONS, PRODUCT CARTON INSTALLATION INSTRUCTIONS, AND DATA SHEETS.

ALUMINUM DOORS AND FRAMES

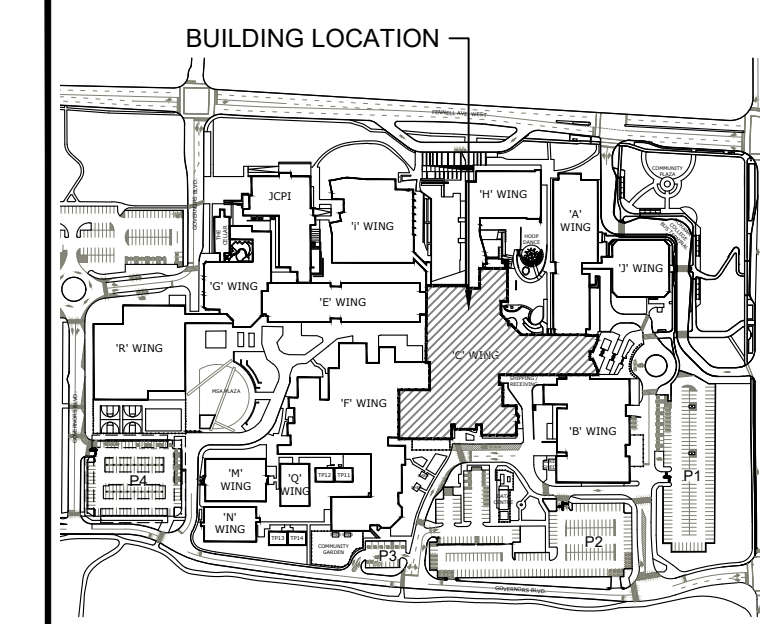
- .1 SHOP DRAWINGS:
 - .1 SUBMIT SHOP DRAWINGS TO INDICATE MATERIALS AND DETAILS FOR HEAD, JAMB AND SILL, PROFILES OF COMPONENTS, INTERIOR AND EXTERIOR TRIM, ELEVATIONS OF UNIT, ANCHORAGE DETAILS, LOCATION OF ISOLATION COATING, DESCRIPTION OF RELATED COMPONENTS AND EXPOSED FINISHES, FASTENERS, AND CAULKING.
- .2 MATERIALS
 - .1 ALUMINUM EXTRUSIONS: TO ALUMINUM ASSOCIATION ALLOY AA 6063-T6 ANODIZING QUALITY.
 - .2 STEEL REINFORCEMENT: TO CSA G40.20/G40.21, GRADE 300 W.
 - .3 FASTENERS: STAINLESS STEEL, FINISHED TO MATCH ADJACENT MATERIAL.
 - .4 DOOR BUMPERS: BLACK NEOPRENE.
 - .5 DOOR BOTTOM SEAL: DOOR SEAL OF ANODIZED EXTRUDED ALUMINUM FRAME AND VINYL WEATHER SEAL, RECESSED IN DOOR BOTTOM, CLOSED ENDS.
 - .6 GLAZING MATERIALS: REFER TO GLAZING SECTION.

GLAZING:

- .1 MATERIALS:
 - .1 FLOAT GLASS: TO CAN/CGSB-12.3, TRANSPARENT COMPLETE WITH POLISHED EDGES.
 - .2 SAFETY GLASS: TO CAN/CGSB-12.1, TRANSPARENT COMPLETE WITH POLISHED EDGES, TO THICKNESS AS FOLLOWS.
 - .1 TYPE 1: TEMPERED, 1/4" THICK.
 - .3 INSULATING GLASS UNITS:
 - .1 INSULATING GLASS UNITS TO CAN/CGSB-12.8, DOUBLE UNIT, 1" OVERALL THICKNESS, SAFETY GLASS BOTH LIGHTS WHERE INDICATED.
 - .2 GLASS THICKNESS: TO REQUIREMENTS OF OBC FOR CONDITION AND GLAZING TYPE INDICATED, BUT TO MINIMUM TYPE AND THICKNESS AS INDICATED.
 - .3 INTER-CAVITY SPACE THICKNESS: TO SUIT OVERALL THICKNESS AND GLASS THICKNESS, ARGON FILLED, WITH NON-CONDUCTIVE SPACERS.
 - .4 GLASS COATING: SPUTTER LOW 'E' ON NO. 2 SURFACE.
 - .5 INERT GAS FILL: ARGON.
 - .6 COLOUR: CLEAR.

ACCESSORIES (MANUFACTURER'S STANDARD UNLESS OTHERWISE INDICATED):

- .1 GLAZING TAPE: UNLESS OTHERWISE INDICATED, PREFORMED BUTYL COMPOUND WITH INTEGRAL RESILIENT TUBE SPACING DEVICE, 10-15 SHORE A DUROMETER HARDNESS TO ASTM D2240; COILED ON RELEASE PAPER; 1/4" WIDE X 1/8" THICK SIZE; BLACK COLOUR.
 - .1 ACCEPTABLE PRODUCT: 'POLYSHIM II TAPE', BY TREMCO.
- .2 SEALANTS: REFER TO SEALANTS.
- .2 INSTALLATION: COMPLY WITH MANUFACTURER'S WRITTEN DATA, INCLUDING PRODUCT TECHNICAL BULLETINS, PRODUCT CATALOGUE INSTALLATION INSTRUCTIONS, PRODUCT CARTON INSTALLATION INSTRUCTIONS, AND DATA SHEETS.



KEY PLAN

No.	ISSUE / REVISION	DDMMYY
B	ISSUED FOR TENDER	12/04/24
A	ISSUED FOR 100% CLIENT REVIEW	22/03/24

THESE DRAWINGS HAVE BEEN PRODUCED BY J.L. RICHARDS & ASSOCIATES LIMITED AND ARE SUBJECT TO COPYRIGHT AND USE RESTRICTIONS SET OUT IN THE APPLICABLE PROJECT CONTRACT. ANY USE, REUSE, OR MODIFICATION OF THESE DRAWINGS FOR PURPOSES OTHER THAN THE ORIGINAL PROJECT OR EXECUTION OF THE DESCRIBED WORK IS NOT PERMITTED OR ENDORSED WITHOUT THE PRIOR WRITTEN AUTHORIZATION OF J.L.R. J.L.R. MAKES NO WARRANTIES, EITHER EXPRESS OR IMPLIED, OF THE SUITABILITY OR FITNESS OF THESE DRAWINGS FOR ANY OTHER PURPOSE, AND ANY PARTY WHICH CHOOSES TO USE, MODIFY, OR OTHERWISE RELY ON THESE DRAWINGS WITHOUT J.L.R.'S AUTHORIZATION ACCEPTS THESE LIMITATIONS AND DOES SO AT THEIR SOLE RISK AND WITHOUT LIABILITY TO J.L.R.

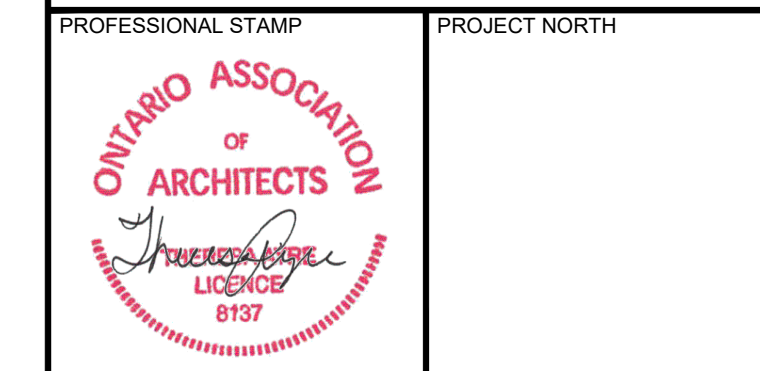
VERIFY SHEET SIZE AND SCALES. THE BAR TO THE RIGHT IS 25mm IF THIS IS A FULL SIZE DRAWING. 0 25mm

SCALE:



CONSULTANT:
JLR J.L. Richards
 ENGINEERS - ARCHITECTS - PLANNERS

CONSULTANT:



PROJECT:
MOHAWK COLLEGE - FENNELL CAMPUS - C-WING; WINDOW REPLACEMENT
 135 FENNELL AVENUE WEST, HAMILTON, ON L9C 035

DRAWING:
SPECIFICATIONS

DESIGN:
 DRAWN:
 CHECKED:
 JLR # 31830-017

DRAWING #:
A04