



## **Addendum # 1**

### **Bid Opportunity: 25-7730-RFT - Bluevale Collegiate Institute Developmental Education Classroom and Universal Washroom Upgrade Closing Date: Monday, April 28, 2025 2:00 PM**

---

The following issued by the Board shall form part of the Bid / Proposal Solicitation document. The revisions and additions noted herein along with any attachments shall be read in conjunction with all other related documents. This Addendum shall, take precedence over the previously issued documents where differences occur. Receipt of this addendum must be acknowledged in the Bidding System, bids&tenders.

If you have already submitted a Bid / Proposal, it will be automatically withdrawn as a result of this addendum. You must resubmit the Bid / Proposal acknowledging all addenda and revising your Bid / Proposal to comply with all addenda.

**Information Initiated by the Consultant**

WRDSB-Bluevale CI Developmental Education Classroom and  
Universal Washroom Upgrade  
WRDSB Project No.: 25-7730-RFT  
WF Project No.:2024-0057-11

April 16, 2025  
ADDENDUM #1  
Page 1 of 2

This Addendum amends and forms part of the Bidding and Contract Documents for the above Project as follows:

## **CHANGES TO SPECIFICATIONS**

### **ARCHITECTURAL**

#### **Section 09 30 00 Tiling**

1. Add article 2.2.3 to read:  
Ceramic Wall Tile (Kitchen Backsplash): 100mm x 100mm (4" x 4") size; Colour + Dimension Series by Olympia or accepted alternate, colours as selected by Consultant from supplier's full range of colours.

#### **Section 09 51 00 Acoustical Ceilings**

1. Remove article 1.3.2.
2. Remove section 2.3 Overhead Metal Curtain, in its entirety.

#### **Section 10 20 00 Interior Specialties**

1. Add article 1.2.6 to read "Wall Pads and Rails"
2. Add article 2.7:

##### **2.7 WALL PADS AND RAILS**

- .1 Manufactured by: Gymnasium and Health Equipment Ltd. or Apple Athletic.
  - .1 Wall Pads – Removable SFM-1016 or 01016 (Apple Athletic). Removable pads to be 2" thick non-folding type, 6' H.
  - .2 Wall Rail – Velcro strip.
  - .3 Colour: to be selected by Consultant during shop drawing review.

#### **Section 10 21 23 Cubicle Curtains and Tracks**

1. Add section.

## **CHANGES TO DRAWINGS**

### **ARCHITECTURAL**

#### **Drawing A101**

1. Revise trenching layout.

Drawing A201

1. Revise infill layout.
2. Remove a whiteboard from scope.
3. Revise location of kitchenette.
4. Revise location of wall assembly W-2.
5. Revise location of whiteboard.
6. Revise location of television.
7. Revise location of relocated tackboard.
8. Revise drawing note 3 to read "Provide 2" thick x 6' high wall pads. Mounted 100mm A.F.F. Refer to specifications".
9. Revise drawing note 4 to read "Curtain track to be fastened to block walls and to have an intermediate support fastened to deck. Shop drawings to be submitted - refer to specifications.".

Drawing A802

1. Revise interior elevation 1/A802.
2. Revise interior elevation 9/A802.
3. Remove millwork on casters and millwork section 5/A802.

**MECHANICAL AND ELECTRICAL**

1. Refer to attached Addendum 1 by DEI Engineering Inc.

**END OF ADDENDUM**

**ATTACHMENTS**

10 21 23 (R0)

A101

A201

A802

Addendum 1 by DEI Engineering Inc.

## **1 GENERAL**

### **1.1 INSTRUCTIONS**

- .1 Comply with the General Conditions of the Contract, the Supplementary Conditions and the General Requirements of Division 01.

### **1.2 SUMMARY**

- .1 Section Includes
  - .1 Overhead metal curtain.
- .2 Related Sections:
  - .1 Section 09 51 23 – Acoustic Tile Ceilings

### **1.3 REFERENCES**

- .1 Reference Standards: Versions of the following standards current as of the date of issue of the project apply to the Work of this Section. Where regulatory requirements use older version of a standard, comply with the version year adopted by the Authority Having Jurisdiction
  - .1 Underwriters Laboratories of Canada (ULC):
    - (1) CAN/ULC-S102 – Standard Method of Test for Surface Burning Characteristics of Building Materials and Assemblies.

### **1.4 SUBMITTALS**

- .1 Submittals under this Section shall be in accordance with General Conditions and Section 01 33 00.
- .2 Product Data:
  - .1 Submit manufacturer's Product data sheets for Products proposed for use in the Work of this Section. Include printed technical data, installation instructions and general recommendations for all materials and components. Include certification indicating compliance of materials with project requirements
- .3 Shop Drawings: Indicate a reflected ceiling plan view of curtain and IV track, hangers and suspension points (at concrete block walls and deck), attachment details, schedule of curtain sizes.
- .4 Samples:
  - .1 Submit two (2) fabric samples, 300 x 300 mm in size illustrating fabric colour.
  - .2 Submit 300 x 300 mm sample patch of curtain cloth with representative hem stitch detail, heading with reinforcement, and carrier attachment to curtain header.
  - .3 Submit 300 mm sample length of curtain track including typical splice and wall and ceiling hanger and escutcheon.

## 1.5 SUBMITTALS

- .1 Submittals under this Section shall be in accordance with General Conditions and Section 01 33 00.
- .2 Product Data:
  - .1 Submit manufacturer's Product data sheets for Products proposed for use in the Work of this Section. Include printed technical data, installation instructions and general recommendations for all materials and components. Include certification indicating compliance of materials with project requirements
  - .2 Manufacturer's special installation requirements including special procedures, perimeter conditions requiring special attention, and suspension rods securement.

## 1.6 CLOSEOUT SUBMITTALS

- .1 Submittals under this Section shall be in conformance with Section 01 78 10.
- .2 Operation and Maintenance Data: Include recommended cleaning methods and materials and stain removal methods.

## 1.7 DELIVERY, STORAGE, AND PROTECTION

- .1 Transport, handle, store, and protect products.
- .2 Accept curtain materials on site and inspect for damage.
- .3 Store curtain materials on site and deliver to the Owner for installation when requested.

## 2 PRODUCTS

### 2.1 MANUFACTURERS

- .1 The products of the following manufacturers are acceptable subject to conformance with the requirements of the Drawings, Schedules and Specification:
  - .1 Acceptable Manufacturers:
    - (1) AR Nelson Co.; [www.arnelson.com](http://www.arnelson.com)
    - (2) CartsPlus Healthcare Products Ltd; [www.cartsplushealthcare.com](http://www.cartsplushealthcare.com)
    - (3) Commercial Draperies Ltd; [www.commercialdraperies.ca](http://www.commercialdraperies.ca)
    - (4) Construction Specialties, Inc.; [www.c-sgroup.com](http://www.c-sgroup.com)
    - (5) Inpro Corporation; [www.inprocorp.com](http://www.inprocorp.com)
    - (6) Silent Gliss Ltd; [www.silentflissglobal.com](http://www.silentflissglobal.com)
  - .2 Requests for substitutions shall be made in conformance with Section 01 33 00.
- .2 Substitution Limitations: Comparable Products from manufacturers not listed herein may be accepted provided they meet requirements of this Specification.

## **2.2 PERFORMANCE/DESIGN CRITERIA**

- .1 Track: Support vertical test load of 23kg (50lbs) without visible deflection of track or damage to supports.
- .2 Track Size: Safely support moving loads.
- .3 Track and Mounting: Sufficiently rigid to resist visible deflection and without permanent set.

## **2.3 MATERIALS**

- .1 Fabrication:
  - .1 Tracks:
    - (1) Fabricate tracks from one continuous length, in longest lengths possible.
    - (2) Fabricate track bend with minimum 300mm (12inch) radius, without deforming track section, or impeding movement of carriers.
  - .2 Curtain:
    - (1) Manufacture curtains of one piece, sized 10% wider than track length, but not less than 305mm (12inches) added fullness. Terminate curtain 152 mm (6 inches) from floor. Refer to Drawings for ceiling heights.
    - (2) Include open mesh cloth at top 300 mm (12 inches) of curtain for room air circulation.
    - (3) Curtain Heading: Triple thickness, reinforced with integral web, 50.8mm (2inches) wide, with metal grommet holes for carriers spaced at 152mm (6inches) on centre, double fold bottom hem 50.8mm (2inches) wide. Lock stitch seams in two rows. Turn seam edges and lock stitch.
- .2 Finishes:
  - .1 Exposed metal surfaces: Clear anodized finish.
  - .2 Curtain fabric: blackout.

## **3 EXECUTION**

### **3.1 EXAMINATION**

- .1 Verification of Conditions:
  - .1 Examine all work of other Sections upon which the Work of this Section depends.
  - .2 Do not proceed with installation until all wet work such as concrete and painting has been completed and thoroughly dried.
  - .3 Report in writing to the Consultant any defects of surfaces or work prepared by other Sections which affect the quality or dimensions of the Work of this Section.
  - .4 Do not proceed with Work of this Section until all unsatisfactory conditions have been rectified and site conditions are ready to receive work.
  - .5 Commencement of Work implies complete acceptance of existing conditions and previous work performed by others.

### **3.2 PREPARATION**

- .1 Verify substrate surfaces are solid, free from surface water, dust, oil, grease, projections and other foreign matter detrimental to performance.
- .2 Items to be built-in: Provide information and templates required for installation of work of this Section, and assist or supervise, or both, the setting of anchorage devices, and construction of other work incorporated with products specified in this Section in order that they function as intended.
- .3 Verify there is adequate support and/or blocking in gypsum wall assemblies prior to installation.

### **3.3 INSTALLATION**

- .1 Install track rigid, plumb, level and true, and securely anchored to the overhead construction in accordance with authorities having jurisdiction, reviewed shop drawings, and manufacturer's written instructions.
- .2 Install tracks after finish painting and ceiling finishing operations are complete.
- .3 Anchor curtain track directly to concrete block walls and deck with suitable fasteners, spaced as per manufacturer's recommendation. Center fasteners in track to ensure unencumbered carrier operation.
- .4 Remove damaged or defective components and replace with new components or repair to the original condition.

### **3.4 SITE QUALITY CONTROL**

- .1 Conduct quality control in accordance with Section 01 45 00.
- .2 Non-Conforming Work:
  - .1 Defective materials or quality of work, whenever found, at any time prior to acceptance of the work, shall be rejected regardless of previous inspection. Inspection will not relieve responsibility, but is a precaution against oversight or errors.
  - .2 Replace damaged work which cannot be satisfactorily repaired, restored or cleaned, to the satisfaction of the Consultant at no additional cost to the Owner.

### **3.5 ADJUSTING**

- .1 Test and adjust carrier units as required to operate smoothly and easily over the full range of travel.

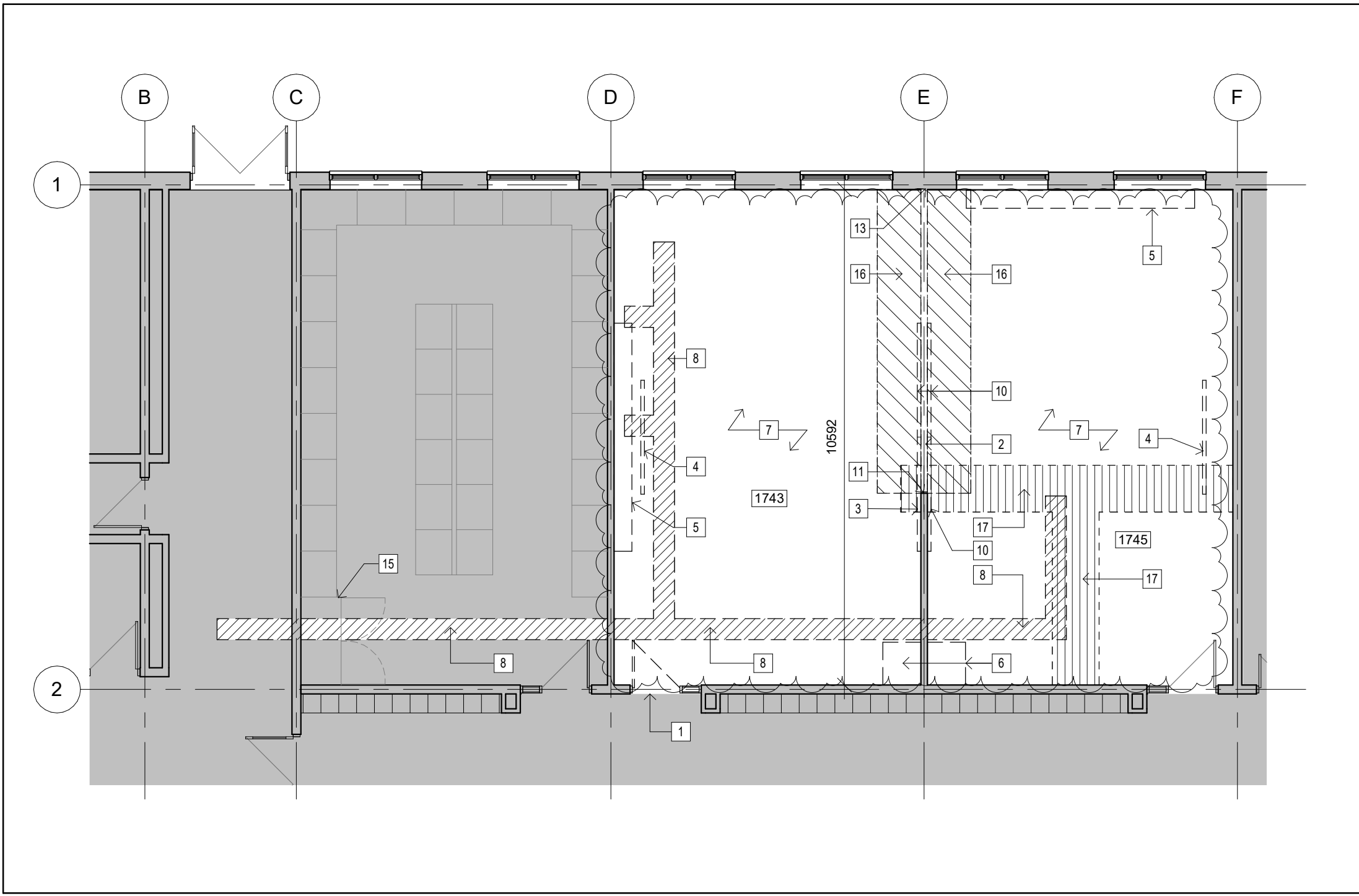
### **3.6 CLEANING**

- .1 Clean work area daily in accordance with Section 01 74 00.
- .2 Remove all excess materials from site as Work proceeds and at completion.
- .3 On completion of the Work remove all tools, containers, surplus materials, equipment, waste, etc., and leave Site neat, clean and tidy to the satisfaction of the Owner.

- .4 Clean and polish exposed surfaces prior to acceptance by Consultant.
- .5 Clean and make good surfaces soiled or otherwise damaged as a result of Work of this Section at no additional cost to the Owner.
- .6 Leave surfaces clean and ready for use.

**END OF SECTION**





1 PARTIAL FLOOR PLAN - DEMOLITION  
A101 Scale: 1 : 100

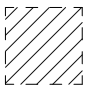

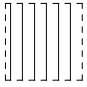
GENERAL NOTES

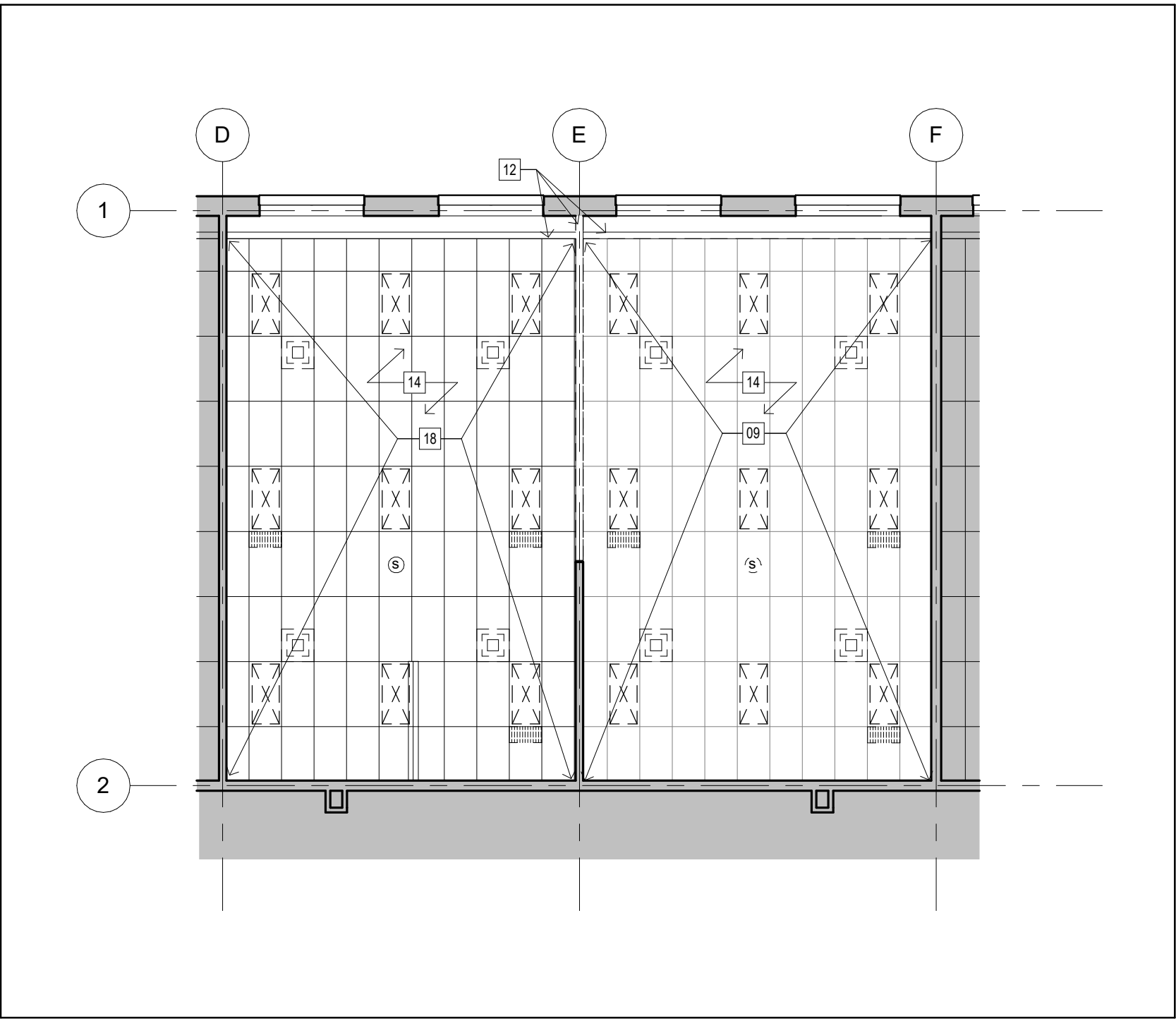
- A. CARRY OUT ALL DEMOLITION, REMOVAL AND DISPOSAL IN ACCORDANCE WITH APPLICABLE PROVINCIAL AND LOCAL REGULATIONS.
- B. EXECUTE DEMOLITION IN AN ORDERLY AND CAREFUL MANNER WITH DUE CONSIDERATION FOR ADJACENT STRUCTURES AND FINISHES.
- C. ALL NECESSARY PRECAUTIONS SHALL BE TAKEN TO GUARD AGAINST MOVEMENT OR SETTLEMENT OF THE REMAINING STRUCTURE, INCLUDING ALL NECESSARY BRACING OR SHORING THAT IS REQUIRED.
- D. ALL DEMOLITION DEBRIS TO BE DISPOSED BY DEMOLITION TRADE UNLESS OTHERWISE NOTED.
- E. ALL CONTRACTORS TO REFER TO MECHANICAL AND ELECTRICAL DRAWINGS OR DEMOLITION NOTES FOR DETAILS OF SCOPE OF MECHANICAL AND ELECTRICAL DEMOLITIONS.
- F. CONTRACTOR SHALL BE ENTIRELY RESPONSIBLE FOR, AND MAKE GOOD ALL DAMAGE TO ADJACENT FINISHED SURFACES AND ASSEMBLIES.
- G. CONTRACTOR TO ENSURE ALL EXIT SIGNAGE TO REMAIN AS INSTALLED AND ENSURE FIXTURES ARE OPERATIONAL. CONTRACTOR TO PROVIDE RE-SUPPORT AS REQUIRED TO SUIT PHASING.
- H. CONTRACTOR TO ENSURE ALL EMERGENCY LIGHT FIXTURES TO REMAIN ALONG EGRESS ROUTES.
- I. PATCH AND MAKE GOOD ANY DAMAGED FIRE ASSEMBLIES WITH CONTINUOUS FIRESTOPPING/FIREBLOCKING EQUAL TO THAT OF WALL/FLOOR.
- J. CONTRACTOR TO ENSURE ALL MANUAL PULL STATIONS AND FIRE ALARM BELLS REMAIN OPERATIONAL. IF A DEVICE MUST BE REMOVED, THE DEVICE MUST BE PROPERLY DE-PROGRAMMED BY LICENSED FIRE ALARM TECHNICIAN AND RE-ACTIVATED AT END OF WORKING DAY. FIRE WATCH MUST BE PROVIDED BY DEMOLITION/ABATEMENT TRADE WITHOUT ADDITIONAL COST TO OWNER OR CONSULTANT.
- K. CONTRACTOR TO PROVIDE DUST CONTROL AND HOARDING IN ISOLATED DEMOLITION, TYP. FOR EACH LOCATION.
- L. CONTRACTOR SHALL PATCH AND MAKE GOOD ALL FLOORS WHERE DISTURBED BY REMOVAL OF WALL ASSEMBLY AND/OR EXISTING FINISHES.
- M. IF AN ITEM IS NOT NOTED TO BE REINSTALLED OR TURNED OVER TO THE OWNER, IT SHALL BE THE RESPONSIBILITY OF THE GENERAL CONTRACTOR TO DISPOSE OF ITEMS.
- N. IT SHALL BE THE RESPONSIBILITY OF THE GENERAL CONTRACTOR TO REVIEW ALL DESIGNATED SUBSTANCES DOCUMENTATION PRIOR TO COMMENCING WORK.
- O. IT SHALL BE THE RESPONSIBILITY OF THE GENERAL CONTRACTOR TO REMOVE ALL LOOSE FURNITURE AND WALL MOUNTED DISPLAYS PRIOR TO CONSTRUCTION START.
- P. ANY MECHANICAL OR ELECTRICAL DEVICES THAT MAY BE TEMPORARILY REMOVED AND REINSTALLED FOR THIS WORK SHALL BE TESTED.
- Q. LOCATE AND DISCONNECT, CAP AND PLUG ALL GAS, WATER, SEWER, HYDRO, TELEPHONE AND OTHER SERVICES AS REQUIRED.
- R. PREPARE ALL THE SURFACES TO BE ACCEPTABLE FOR PROPOSED FINISHING AFTER DEMOLITION WORKS

DEMOLITION NOTES

- 01 REMOVE AND DISPOSE OF EXISTING DOOR C/W FRAME, SCREENS AND ALL HARDWARE. PATCH AND MAKE GOOD ALL SURFACES TO REMAIN. PREPARE OPENING TO ACCEPT NEW DOOR & FRAME.
- 02 REMOVE AND DISPOSE OF EXISTING WALL ASSEMBLY INCLUDING ALL WALL MOUNTED ACCESSORIES. COORDINATE WITH MECHANICAL AND ELECTRICAL TRADES FOR DISCONNECTING AND CAPPING OF ANY SERVICES WITHIN WALL. PATCH AND MAKE GOOD ALL SURFACES TO REMAIN TO ACCEPT PROPOSED CONSTRUCTION OR FINISH.
- 03 REMOVE EXISTING TACK BOARD AND STORE ON SITE. PREPARE WALL TO RECEIVE PAINT.
- 04 REMOVE AND HAND OVER TO OWNER EXISTING PROJECTOR SCREEN.
- 05 REMOVE AND DISPOSE OF EXISTING MILLWORK AND CASEWORK. PATCH AND MAKE GOOD ALL SURFACES TO REMAIN AND TO ACCEPT NEW WALL & FLOOR FINISH.
- 06 REMOVE AND RELOCATE EXISTING TEACHER'S CLOSET. OWNER TO COORDINATE FINAL RELOCATION.
- 07 REMOVE AND DISPOSE EXISTING FLOORING AND BASE C/W ALL ADHESIVES/GROUT. PATCH AND MAKE GOOD EXISTING SLAB/SUBSTRATE TO ACCEPT NEW FLOOR FINISH.
- 08 SAWCUT AND REMOVE PORTION OF CONCRETE FLOOR SLAB. EXCAVATE AND TRENCH AS REQUIRED FOR MECHANICAL, ELECTRICAL, STRUCTURAL, AND ARCHITECTURAL SCOPE. APPROXIMATE EXTENT SHOWN HATCHED.
- 09 REMOVE AND DISPOSE OF EXISTING SUSPENDED ACOUSTIC CEILING ASSEMBLY C/W HANGERS, FRAMING AND MISCELLANEOUS FASTENERS. COORDINATE WITH MECHANICAL AND ELECTRICAL TRADE FOR EXACT LOCATION OF DISCONNECT AND REMOVAL OF ANY SERVICE WITHIN CEILING. PATCH AND MAKE GOOD ALL SURFACES TO RECEIVE NEW CEILINGS. REFER TO MECHANICAL AND ELECTRICAL FOR COMPLETE SCOPE OF WORK.
- 10 REMOVE AND DISPOSE OF EXISTING TACK BOARD. PREPARE TO RECEIVE PAINT.
- 11 CUT EXISTING MASONRY WALL STRAIGHT AND TRUE. PROVIDE TEMPORARY LATERAL SUPPORT AS REQUIRED.
- 12 CAREFULLY REMOVE CONCRETE BLOCK, EXISTING GYPSUM WALL BOARD BULKHEAD AND VALANCE TO REMAIN UNDISTURBED.
- 13 PATCH AND MAKE GOOD EXISTING WALL.
- 14 REMOVE AND DISPOSE OF EXISTING ELECTRICAL AND MECHANICAL FIXTURES.
- 15 RELOCATE CABINET FOR TRENCHING, INFILL AND FLOORING FINISH PATCH.
- 16 GRIND CONCRETE FLOOR SMOOTH 1 METER BOTH SIDES OF THE WALL.
- 17 EXTENT OF SLAB THICKENING. SEE TRENCHING LEGEND.
- 18 EXISTING CEILING TILE AND CEILING GRID TO REMAIN. PATCH AND MAKE GOOD ANY DAMAGE TO EXISTING DUE TO DEMOLITION AND CONSTRUCTION.

TRENCHING LEGEND:

1. ALL TRENCHING DIMENSIONS ARE APPROXIMATE. GC TO SITE VERIFY TRENCHING REQUIRED TO MINIMIZE DEMOLITION OF FLOOR SLAB TYPICAL.
-  SAWCUT AND REMOVE PORTION OF CONCRETE FLOOR SLAB. EXCAVATE AND TRENCH AS REQUIRED FOR MECHANICAL, ELECTRICAL, STRUCTURAL, AND ARCHITECTURAL SCOPE. APPROXIMATE EXTENT SHOWN HATCHED.
-  HATCHED AREA DENOTES CONCRETE INFILL OF TRENCHING (APPROX. 190 mm THICK). FINISH FLUSH WITH ADJACENT EXISTING FLOOR FINISH. PATCH AND MAKE GOOD WITH EXISTING ADJACENT AND PREPARE SUBSTRATE TO RECEIVE NEW FLOOR FINISH - REFER TO DETAIL C206/A201 FOR SLAB-ON-GRADE REPAIR DETAIL TYPICAL.
-  HATCHED AREA DENOTES EXTENT OF CONCRETE SLAB THICKENING. FINISH FLUSH WITH ADJACENT EXISTING FLOOR FINISH. PATCH AND MAKE GOOD WITH EXISTING ADJACENT AND PREPARE SUBSTRATE TO RECEIVE NEW FLOOR FINISH - REFER TO DETAIL C107/A201 FOR SLAB THICKENING DETAIL TYPICAL.

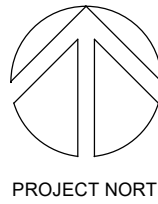
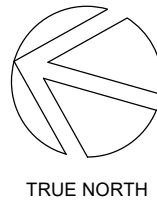
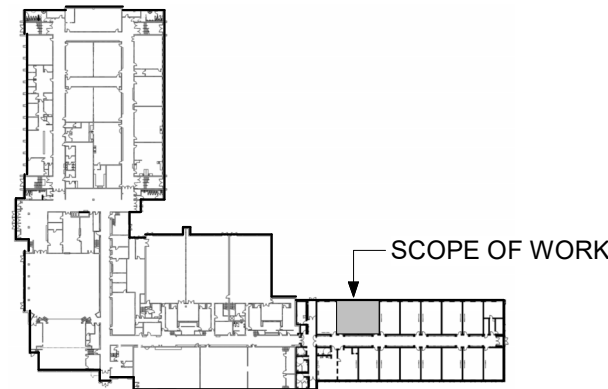


2 PARTIAL REFLECTED CEILING PLAN - DEMOLITION  
A101 Scale: 1 : 100

CLIENT LOGO



KEYPLAN



No.	ISSUANCE	DATE
1	ISSUED FOR 100% OWNER REVIEW	2025.03.19
2	ISSUED FOR BID AND PERMIT	2025.04.04
3	ISSUED FOR ADDENDUM 1	2025.04.15

CLIENT

WATERLOO REGION DISTRICT SCHOOL BOARD

51 ARDELT AVE., KITCHENER, ON

PROJECT

WRDSB BLUEVALE CI DEVELOPMENTAL EDUCATION CLASSROOM RENOVATION

80 BLUEVALE ST N, WATERLOO ON N2J 3R5

TITLE

PARTIAL DEMOLITION FLOOR AND CEILING PLANS

WALTERFEDY

TORONTO | CALGARY | EDMONTON | KITCHENER | HAMILTON

800.685.1378 walterfedy.com

SEAL

REPRODUCTION OR DISTRIBUTION FOR PURPOSES OTHER THAN AUTHORIZED BY WALTERFEDY, A PART OF WF GROUP, IS FORBIDDEN. CONTRACTORS SHALL VERIFY AND BE RESPONSIBLE FOR ALL DIMENSIONS AND CONDITIONS ON THE JOB AND REPORT ANY VARIATIONS FROM THE DIMENSIONS AND CONDITIONS SHOWN ON DRAWINGS TO WALTERFEDY, A PART OF WF GROUP. -DO NOT SCALE THIS DRAWING-

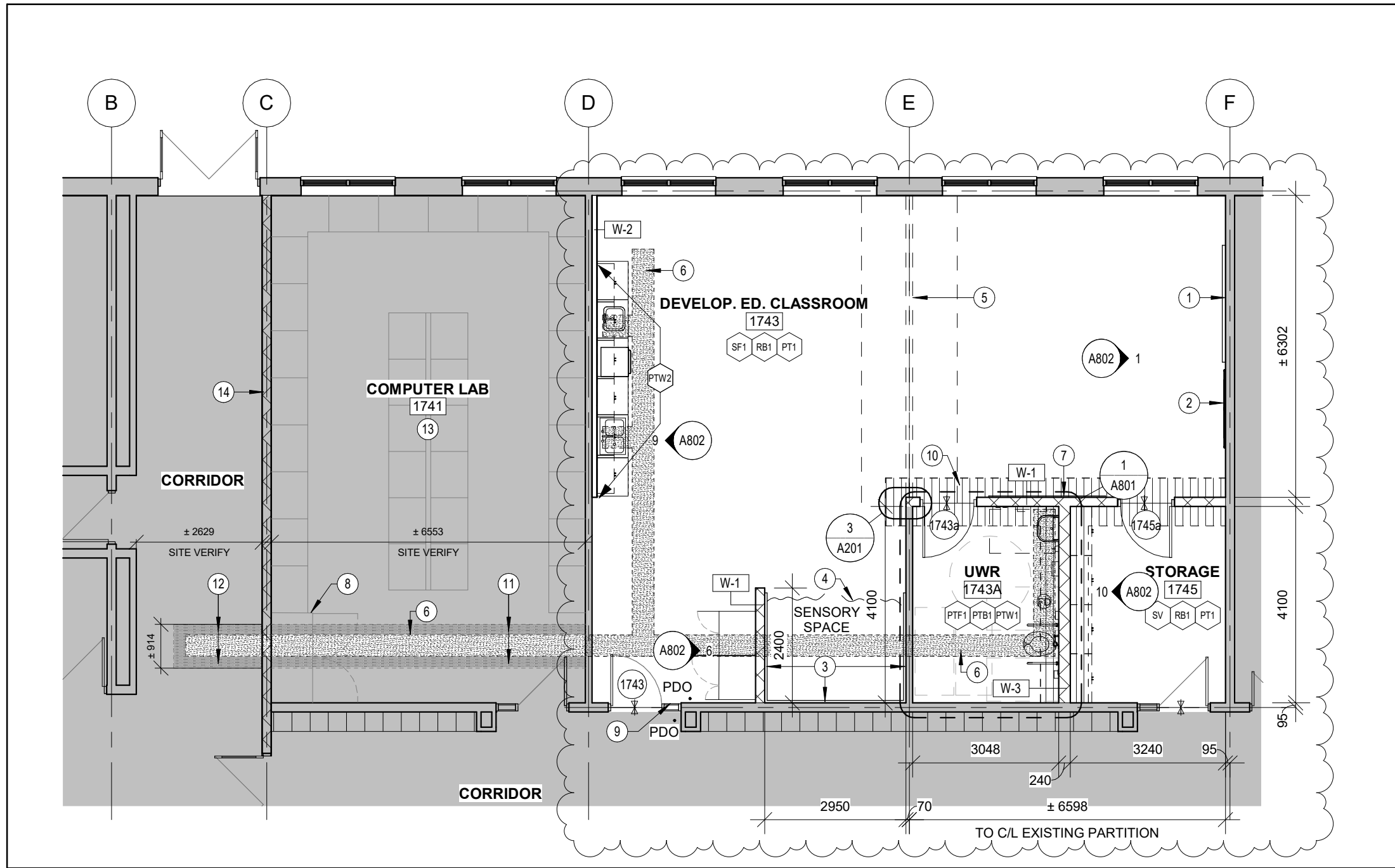
COPYRIGHT © 2024 WalterFedy, A Part of WF Group Inc.

SCALE :	AS NOTED
DATE :	2025.04.04
PROJECT NO :	2024-0057-11
DRAWN BY :	CS
CHECKED BY :	MM

SHEET NO :

A101

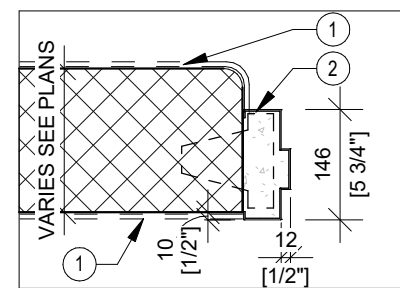




1 PARTIAL FLOOR PLAN - RENOVATION PLAN  
A201 Scale: 1 : 100

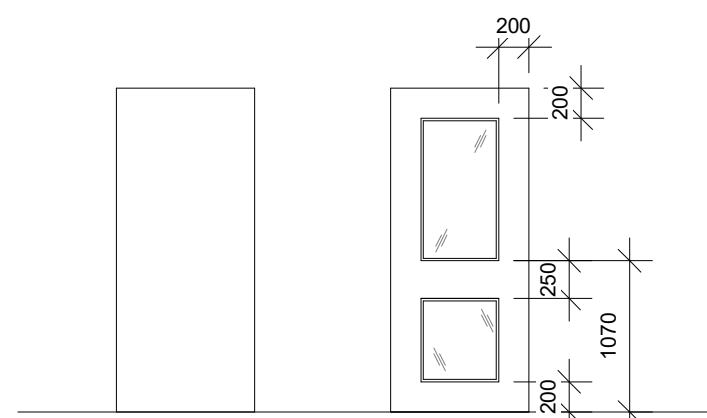
GENERAL NOTES

- ALL WALLS TO EXTEND TO U/S STRUCTURAL DECK UNLESS OTHERWISE NOTED.
- ASSEMBLY CONSTRUCTION READ FROM TAG SIDE OF ASSEMBLY.
- ALL DIMENSIONS ARE APPROXIMATE, CONTRACTOR TO SITE VERIFY ALL DIMENSIONS.
- DIMENSIONING TO/FROM EXISTING CONDITIONS SHALL BE AT FACE OF EXISTING ASSEMBLY.
- PROVIDE BLOCKING AS REQUIRED TO SUPPORT WALL MOUNTED EQUIPMENT.
- REFER TO ELECTRICAL DRAWINGS FOR ALL CEILING MOUNTED EQUIPMENT SIZE AND TYPE.
- SEE MECHANICAL DRAWINGS FOR HVAC EQUIPMENT SIZE AND TYPE.
- CONTRACTOR TO PROTECT ALL EXISTING INTERIOR FINISHES, MECHANICAL, ELECTRICAL, MILLWORK AND FURNITURE TO REMAIN DURING ALL PHASES OF CONSTRUCTION.
- MAKE GOOD ALL CEILING TILE/WALLS/SURFACES AFTER CONSTRUCTION. FIX AND PAINT WALLS DAMAGED BY CONSTRUCTION AND/OR REPLACE CEILING IF DAMAGED BY CONSTRUCTION.
- FIRESTOP AND SEAL ALL PENETRATIONS THROUGH FIRE RATED ASSEMBLIES EQUAL TO ASSEMBLY RATING.
- IT IS THE RESPONSIBILITY OF THE GENERAL CONTRACTOR AND WINDOW SUB-CONTRACTOR TO VERIFY ALL DIMENSIONS AND JOB SITE CONDITIONS AND REPORT ANY DISCREPANCIES TO THE ARCHITECT PRIOR TO COMMENCING CONSTRUCTION.



DOOR FRAME PROFILE

Scale: 1:10



DOOR PANEL ELEVATION

Scale: 1:50

DOOR & SCREEN SCHEDULE

Door/Screen	Width x Height x Thickness	Door/Screen	Type / Elev	Material	Finish	Glazing	Grille	Frame	Type / Elev	Profile	Material	Finish	Hardware	ULC	Penics	Closer	Fire Rating	Notes
1743	1067x2150x45	B	HM	PNT	TGL			2	DF1	HM	PNT	No	No	No	-	-	PDO, ES, OHS	
1743a	1067x2150x45	A	HM	PNT				1	DF1	HM	PNT	No	No	No	-	-	PDO, ES, OHS	
1745a	1067x2150x45	A	HM	PNT				1	DF1	HM	PNT	No	No	No	-	-		

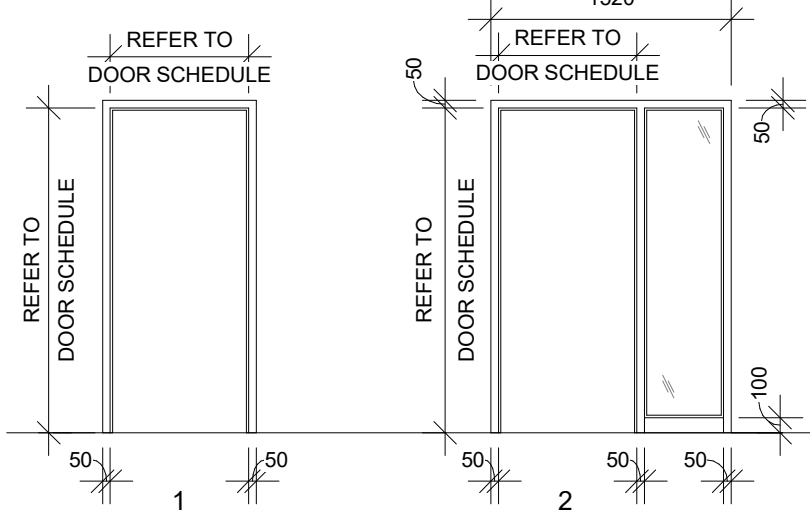
DRAWING NOTES

- PROVIDE 1220x2440mm WHITEBOARD.
- PROVIDE 70" TELEVISION WITH WALL-MOUNTED BRACKET.
- PROVIDE 2" THICK x 6" HIGH WALL PADS. MOUNTED 100mm A.F.F. REFER TO SPECIFICATIONS.
- CURTAIN TRACK TO BE FASTENED TO BLOCK WALLS AND TO HAVE AN INTERMEDIATE SUPPORT FASTENED TO DECK. SHOP DRAWINGS TO BE SUBMITTED - REFER TO SPECIFICATIONS.
- ALLOW FOR TOPPING TO LEVEL FLOOR AT AREA OF CMU PARTITION REMOVAL.
- HATCHED AREA DENOTES CONCRETE INFILL OF TRENCHING, SEE TRENCHING LEGEND.
- RELOCATED TACK BOARD.
- REINSTATE CABINET UPON TRENCHING, INFILL AND FLOOR FINISH PATCH COMPLETION. NEW RUBBER BASE TO MATCH EXISTING.
- ROLLER SHADE, REFER TO SPECIFICATIONS.
- EXTENT OF SLAB THICKENING. SEE TRENCHING LEGEND.
- REPAIR EXISTING VGT FLOOR TILE UPON COMPLETION OF TRENCH CONCRETE INFILL. INSTALL VGT FLOOR TILE, SIZE AND COLOUR TO MATCH EXISTING. APPROX. 3'-0" +/- WIDE ACROSS WIDTH OF EXISTING ROOM. PATCH AND MAKE GOOD WITH EXISTING ADJACENT FLOORING.
- REPAIR EXISTING PORCELAIN FLOOR TILE UPON COMPLETION OF TRENCH CONCRETE INFILL. INSTALL PORCELAIN FLOOR TILE, SIZE AND COLOUR TO MATCH EXISTING. APPROX. 3'-0" +/- WIDE ACROSS WIDTH OF EXISTING CORRIDOR. PATCH AND MAKE GOOD WITH EXISTING ADJACENT FLOORING.
- PROVIDE SEALED DUST PROTECTION, REFER TO DIVISION 01 OF SPECIFICATIONS.
- PAINT CORRIDOR WALL ENTIRELY TO MATCH EXISTING UPON COMPLETION OF TRENCHING.

DOOR SCHEDULE LEGEND:

GENERAL NOTE:

- FRAME HEAD HEIGHT TO BE 50mm (2") UNLESS OTHERWISE NOTED. REFER TO DOOR SCHEDULE
- ALL DOORS LOCATED IN A REQUIRED BARRIER FREE PATH OF TRAVEL AS DESCRIBED IN OBC 3.8.1.3 TO BE MINIMUM DOOR WIDTH 915mm (3'-2") AND 1015mm (3'-4") WITH PANIC SET.
- WINDOW BLINDS TO BE INSTALLED AT ALL GLAZING OPENINGS.



DOOR FRAME ELEVATION

Scale: 1:50

WALL ASSEMBLIES:

- W-1 190mm CONCRETE BLOCK
- W-2 92mm GALV. METAL STUDS (20ga.) @ 400 O.C. GYPSUM WALL BOARD
- W-3 240mm CONCRETE BLOCK

FINISH LEGEND:

WALL & CEILING

- PT1 PAINT
- PT2 PAINT
- PT3 PAINT
- PTW1 PORCELAIN WALL TILE
- PTW2 PORCELAIN WALL TILE

FLOOR:

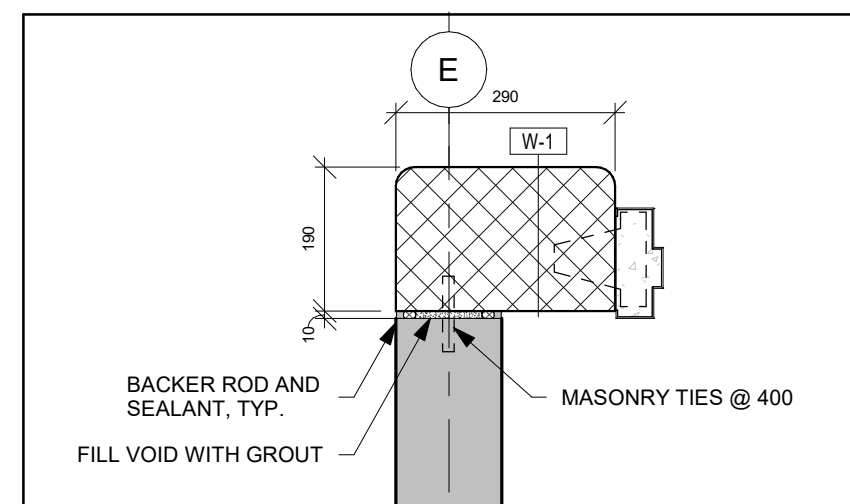
- PTF1 PORCELAIN FLOOR TILE
- SF1 SPORTS FLOORING

BASE:

- PTB1 PORCELAIN TILE BASE
- RB1 RUBBER BASE
- TS TRANSITION STRIP

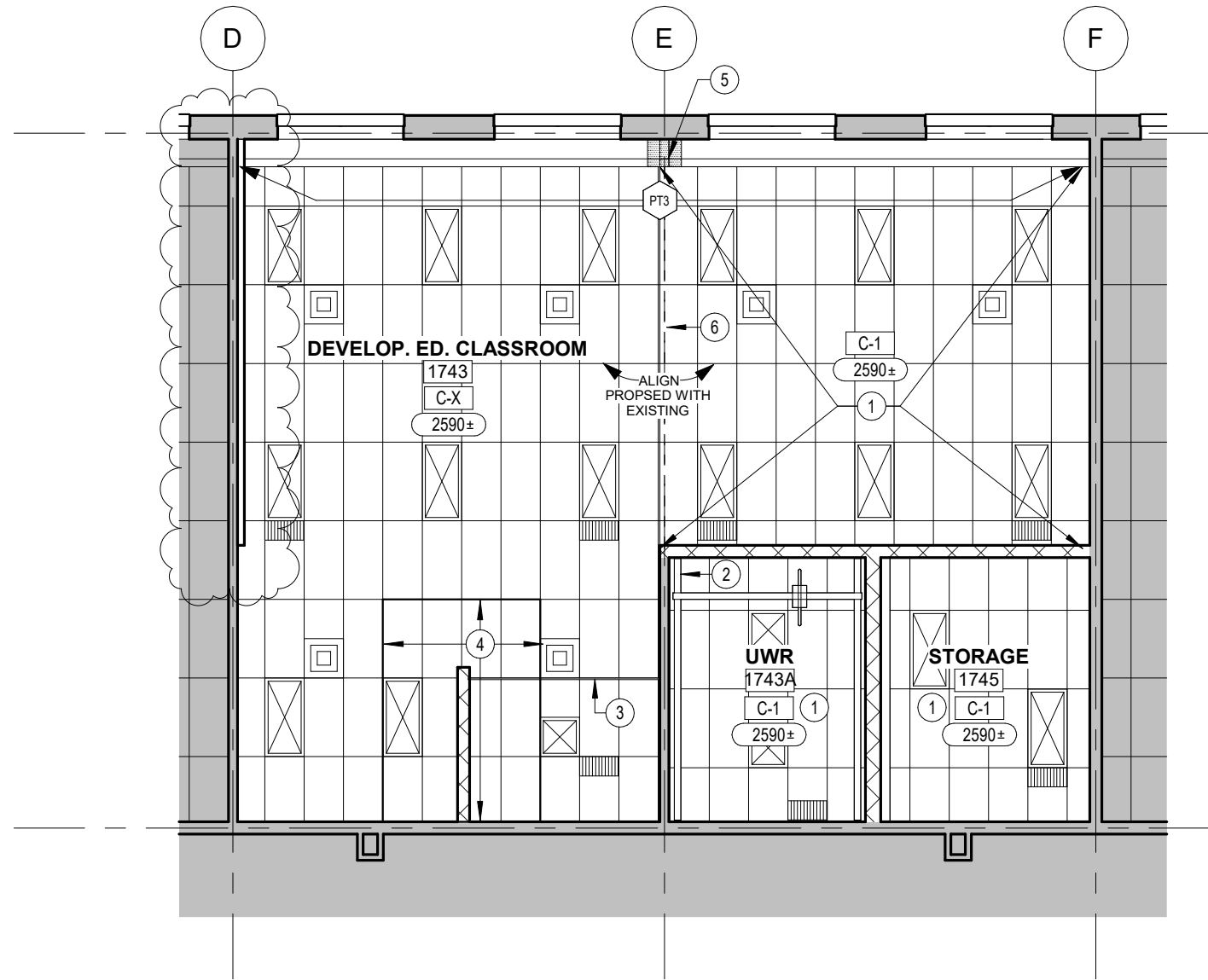
TRENCHING LEGEND:

- ALL TRENCHING DIMENSIONS ARE APPROXIMATE. GO TO SITE VERIFY TRENCHING REQUIRED TO MINIMIZE DEMOLITION OF FLOOR SLAB TYPICAL.
- SAWCUT AND REMOVE PORTION OF CONCRETE FLOOR SLAB. EXCAVATE AND TRENCH AS REQUIRED FOR MECHANICAL, ELECTRICAL, STRUCTURAL, AND ARCHITECTURAL SCOPE. APPROXIMATE EXTENT SHOWN HATCHED.
- HATCHED AREA DENOTES CONCRETE INFILL OF TRENCHING (APPROX. 190 mm THICK). FINISH FLUSH WITH ADJACENT EXISTING FLOOR FINISH. PATCH AND MAKE GOOD WITH EXISTING ADJACENT AND PREPARE SUBSTRATE TO RECEIVE NEW FLOOR FINISH - REFER TO DETAIL C206/A201 FOR SLAB-ON-GRADE REPAIR DETAIL TYPICAL.
- HATCHED AREA DENOTES EXTENT OF CONCRETE SLAB THICKENING. FINISH FLUSH WITH ADJACENT EXISTING FLOOR FINISH. PATCH AND MAKE GOOD WITH EXISTING ADJACENT AND PREPARE SUBSTRATE TO RECEIVE NEW FLOOR FINISH - REFER TO DETAIL C107/A201 FOR SLAB THICKENING DETAIL TYPICAL.



3 PLAN DETAIL

A201 Scale: 1 : 10



2 PARTIAL REFLECTED CEILING PLAN - RENOVATION  
A201 Scale: 1 : 100

GENERAL RCP NOTES

- THE CONTRACTOR SHALL COMPARE THIS REFLECTED CEILING PLAN WITH ELECTRICAL LIGHTING PLANS, MECHANICAL SUPPLY, RETURN AND EXHAUST PLANS. THE CONTRACTOR SHALL REPORT ANY OMISSIONS OR INCONSISTENCIES TO THE ARCHITECT.
- SEE ELECTRICAL DRAWINGS FOR THE LOCATIONS OF CEILING MOUNTED SMOKE DETECTORS, NURSE CALL DOME LIGHTS EXIT SIGNAGE, FIRE ALARM DEVICES, WALL MOUNTED EXIT LIGHTS, ETC.
- COORDINATE GYPSUM BOARD FURR DOWN HEIGHTS WITH FULL HEIGHT CABINETS AND INTERIOR ELEVATIONS.
- SPRINKLER HEAD LOCATIONS ARE NOT SHOWN ON ARCHITECTURAL REFLECTED CEILING PLANS. REFER TO MECH DRAWINGS FOR ANY WORK RELATED TO FIRE PROTECTION SYSTEMS.
- 18" MINIMUM VERTICAL CLEARANCE SHALL BE MAINTAINED BETWEEN THE BOTTOM OF EXTENDED SPRINKLER HEADS AND THE TOP OF ANY FILES, SHELVING, LOCKERS, ETC.
- THE CONTRACTOR SHALL VERIFY THAT ACCESS PANELS OF TYPE SPECIFIED ARE INSTALLED IN NON-ACCESSIBLE TYPE CEILINGS WHERE SERVICE OR ADJUSTMENT TO MECHANICAL, PLUMBING, OR ELECTRICAL ITEMS MAY BE REQUIRED. ACCESS PANELS SHALL BE THE FIRE RATED TYPE EQUAL TO THE RATING OF THE CEILING IN WHICH THEY OCCUR.
- WHERE EXISTING LAY-IN CEILINGS ARE TO REMAIN, THE CONTRACTOR SHALL REPLACE ANY TILE THAT HAS BEEN DAMAGED WITH MATERIALS THAT MATCH THE EXISTING FOR COLOR, TEXTURE, PATTERN, ETC.
- RELOCATE SUPPLY DRAIN AND VENT PIPES TO MAINTAIN SCHEDULED CEILING HEIGHTS. COORDINATE RELOCATIONS WITH MEP.
- LOAD BEARING STEEL STUD FOR CEILING FRAMING TO BE DESIGNED BY OTHERS.

CEILING NOTES:

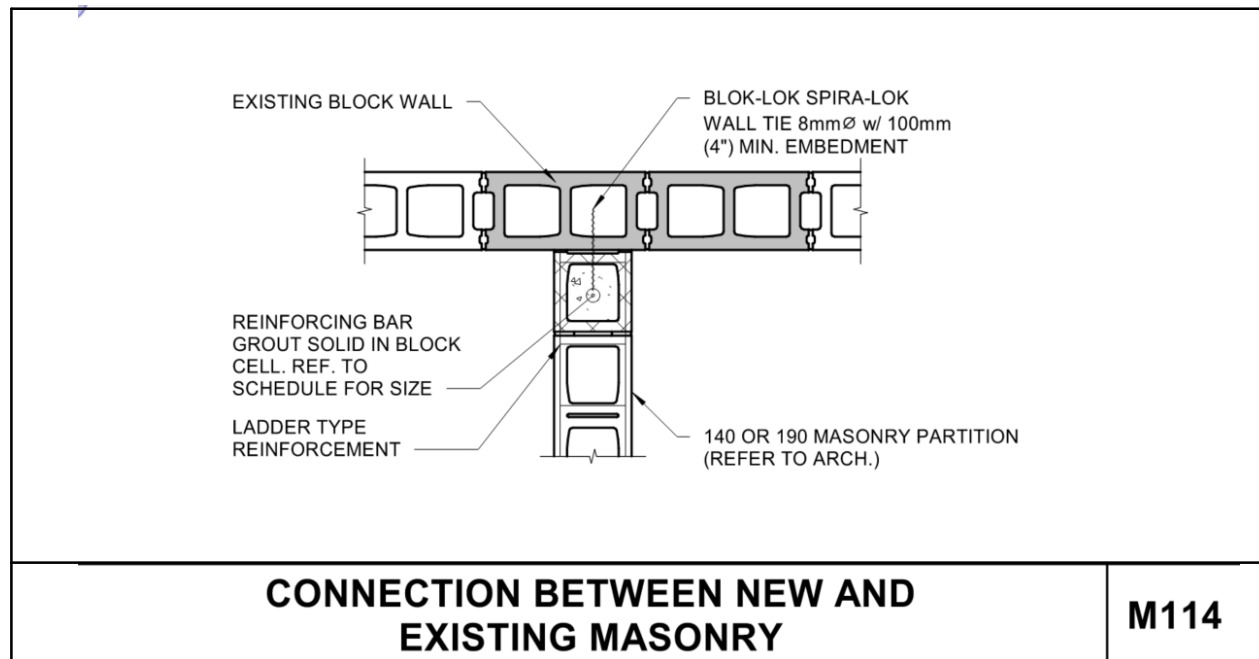
- REINSTALL EXISTING ACOUSTIC CEILING TILE IN NEW PREFINISHED METAL T-BAR SUSPENSION SYSTEM.
- OWNER SUPPLIED SELF SUPPORTED LIFT SYSTEM, GC TO PROVIDE ELECTRICAL. REFER TO SPECIFICATIONS.
- PROVIDE CURTAIN RAIL SECURED TO STRUCTURE ABOVE CEILING.
- REINSTALL T-BAR SUSPENSION SYSTEM AND ACOUSTIC CEILING TILE. MODIFY CEILING TILE AND EXISTING T-BAR TO ACCOMMODATE INSTALLATION OF CONCRETE BLOCK WALL. PATCH AND MAKE GOOD WITH EXISTING.
- MODIFY EXISTING METAL STUD FRAMING TO ALLOW FOR INSTALLATION OF NEW GYPSUM WALL BOARD INFILL. PATCH AND MAKE GOOD WITH EXISTING.
- TIE NEW PREFINISHED METAL T-BAR SUSPENSION SYSTEM INTO EXISTING CEILING GRID.

CEILING ASSEMBLIES

- C-X EXISTING ACOUSTIC CEILING TILE EXISTING CEILING GRID
- C-1 SALVAGED 610x1220 ACOUSTIC CEILING TILE NEW PREFINISHED METAL T-BAR SUSPENSION SYSTEM

REFLECTED CEILING PLAN LEGEND:

- C-1 CEILING ASSEMBLY TYPE
- XXXX US OF CEILING ELEVATION (MEASURED FROM FIN. FLOOR - SITE VERIFY)
- ACOUSTICAL CEILING TILE
- LIGHT FIXTURE (SEE ELEC.)
- SUPPLY AIR DIFFUSER (SEE MECH.)
- RETURN AIR DIFFUSER (SEE MECH.)



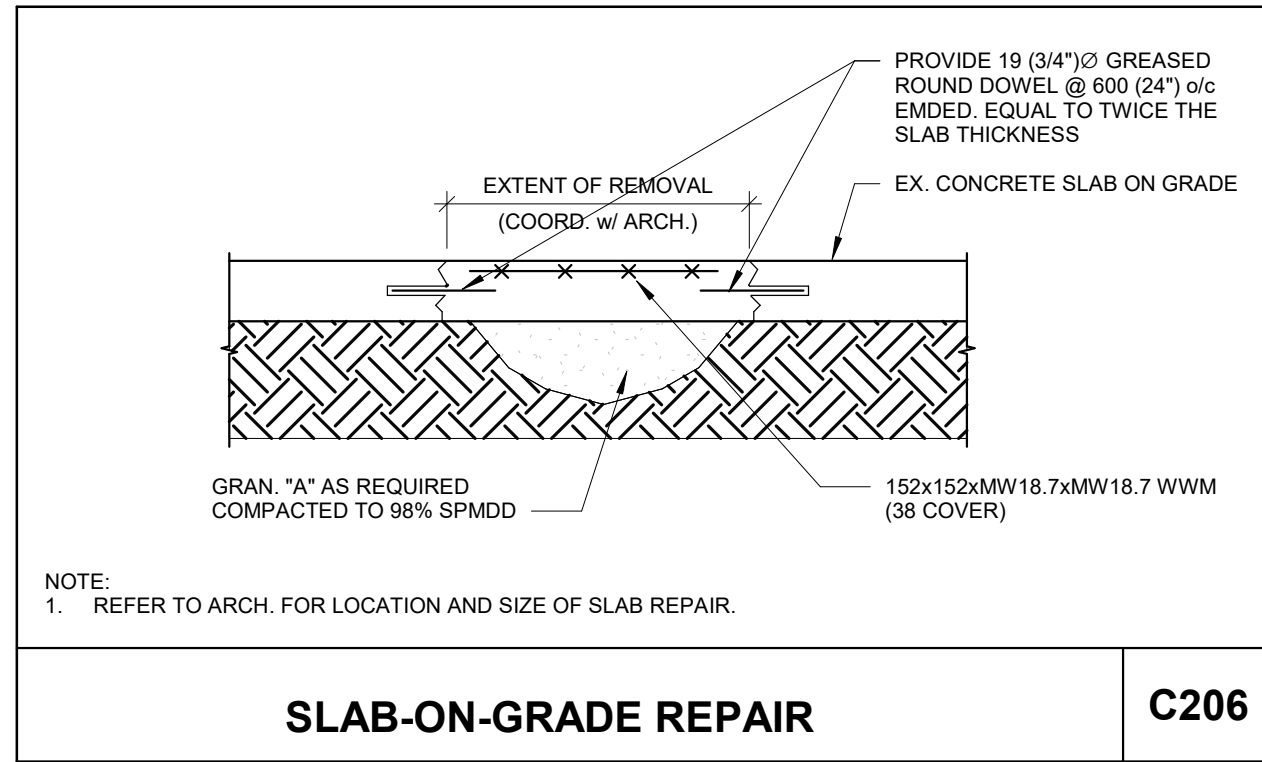
CONNECTION BETWEEN NEW AND EXISTING MASONRY

M114

INTERIOR NON-LOAD BEARING MASONRY WALL MINIMUM REINFORCEMENT				
WALL THICKNESS	LOCATION	VERTICAL REINF.	MAXIMUM HEIGHT	HORIZONTAL JOINT REINFORCEMENT
140	INTERIOR PARTITION	N/A	4000	STANDARD (3.7mm) LADDER TYPE @400
190	<1800 (6'-0")	15M@1200	4000	STANDARD (3.7mm) LADDER TYPE @400
190	<2400 (8'-0")	15M@800	4000	STANDARD (3.7mm) LADDER TYPE @400

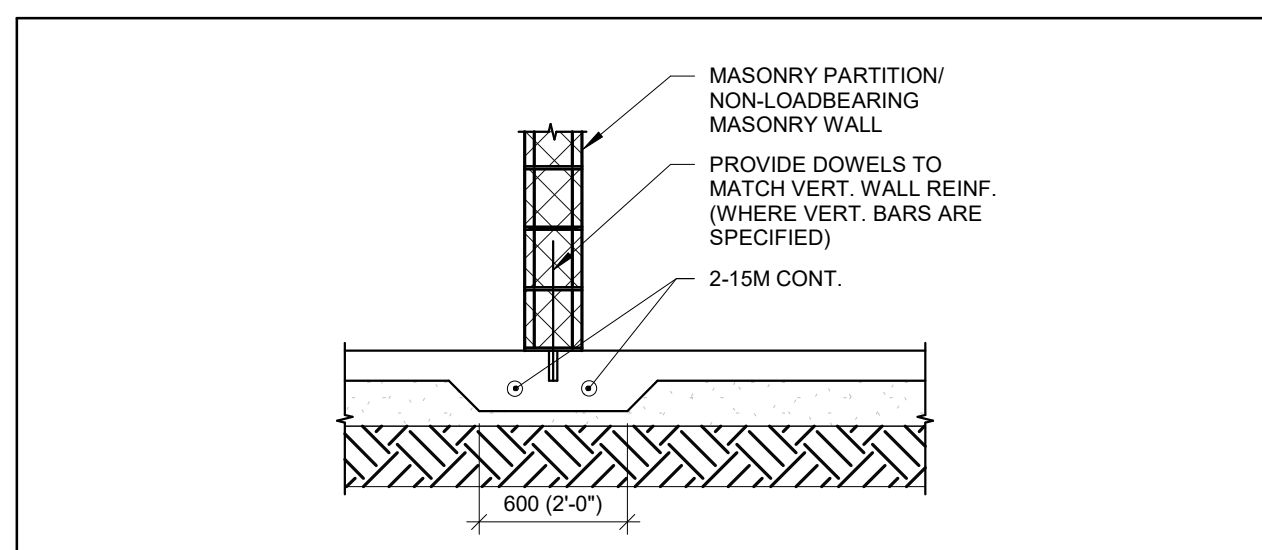
NOTES:

- PROVIDE REINFORCING FOR CONCRETE MASONRY WALLS AS PER THE SCHEDULE UNLESS NOTED OTHERWISE.
- PROVIDE DOWELS INTO CONCRETE FOUNDATIONS AND SLAB THICKENINGS TO MATCH VERTICAL WALL REINFORCEMENT. UNLESS OTHERWISE NOTED.
- REFER TO TYPICAL DETAILS FOR ADDITIONAL SUPPORT REQUIREMENTS.



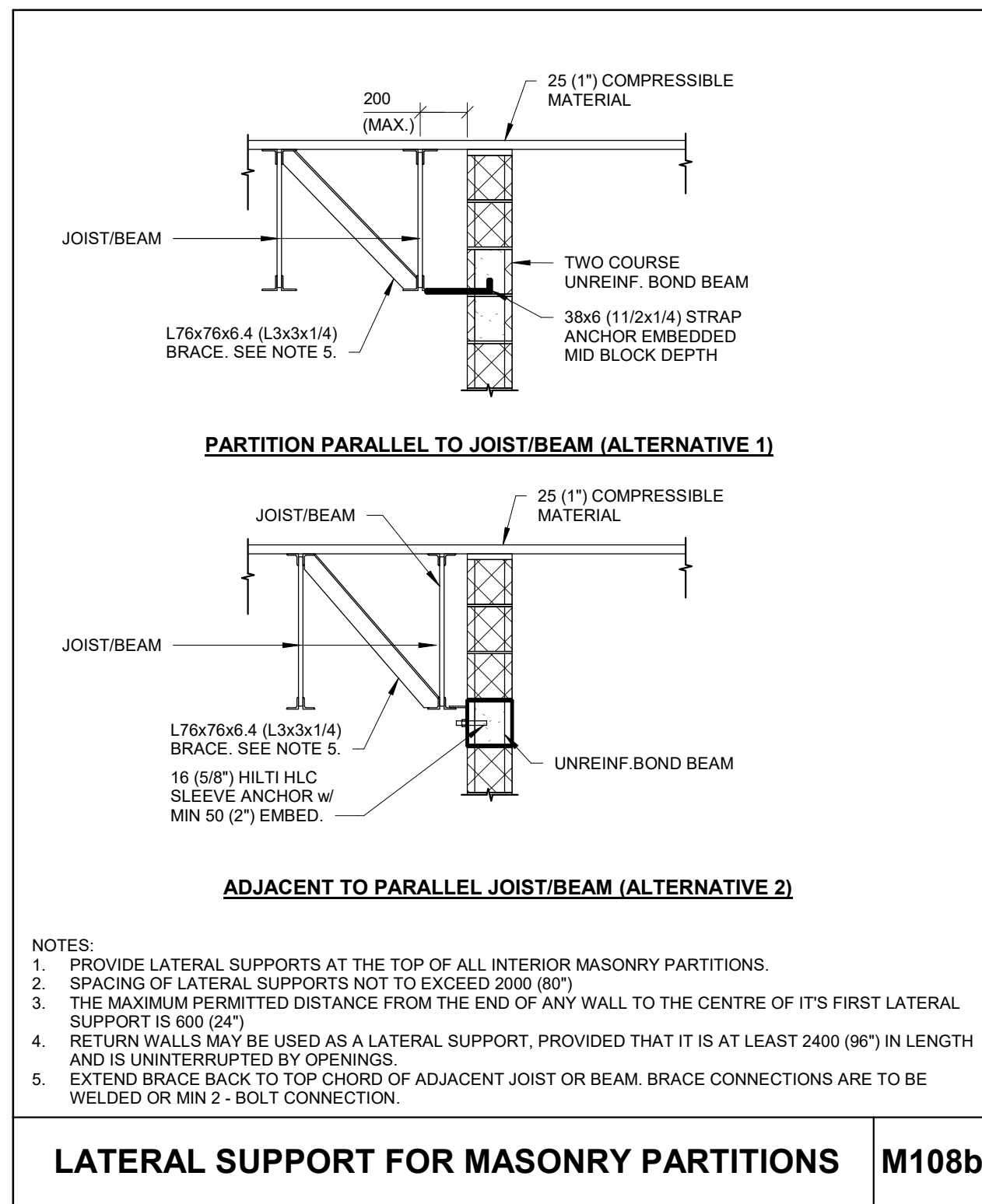
SLAB-ON-GRADE REPAIR

C206



SLAB THICKENING FOR MASONRY PARTITIONS

C107



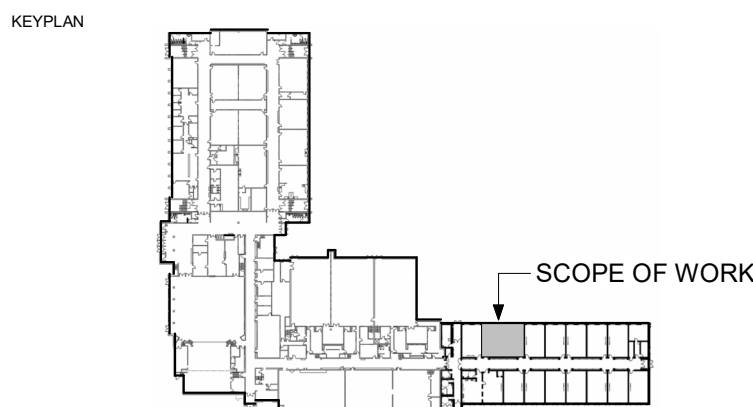
LATERAL SUPPORT FOR MASONRY PARTITIONS

M108b

STEEL LINTELS FOR NON-LOAD BEARING MASONRY WALLS				
WALL THICKNESS	SPAN	HEIGHT OF SUPPORTED MASONRY (h)		
		<1200 (4'-0")	<2600 (8'-6")	<4800 (15'-9")
190 (8")	<1200 (4'-0")	2-L89x89x6.4	2-L89x89x6.4	2-L89x89x6.4
	<1800 (6'-0")	2-L102x89x6.4	2-L102x89x6.4	2-L102x89x7.9
	<2400 (8'-0")	2-L102x89x6.4	2-L102x89x7.9	2-L127x89x7.9
	<3000 (10'-0")	2-L127x89x7.9	2-L152x89x7.9	2-L152x89x9.5
	<3600 (12'-0")	2-L127x89x7.9	2-L152x89x9.5	N/A

NOTES:

- ALL ANGLE LINTELS TO HAVE THE LONG LEG VERTICAL (LLV) UNLESS NOTED OTHERWISE.
- LINTELS TO HAVE A MINIMUM OF 200mm (8") OF BEARING ON EACH SIDE OF THE OPENING. LINTELS TO BEAR ON GROUT FILLED OR SOLID CONCRETE BLOCK. PROVIDE SHIMS AS REQUIRED FOR LEVELING.
- BACK TO BACK ANGLES SHALL BE WELDED USING 6mmx50mm LONG WELDS AT 450mm ON CENTER ALONG THE TOES AND HEELS.
- FOR LINTELS ABUTTING STEEL COLUMNS. SUPPORT WITH A L102x102x9.5 WELDED TO THE COLUMN. FOR LINTELS ABUTTING CONCRETE COLUMNS OR WALLS. SUPPORT WITH A L178x178x13 LAGGED TO THE CONCRETE USING (2) 19mm DIAMETER EXPANSION ANCHORS WITH 150mm EMBEDMENT.
- STEEL LINTELS IN EXTERIOR WALLS SHALL BE GALVANIZED.



No.	ISSUANCE	DATE
1	ISSUED FOR 100% OWNER REVIEW	2025.03.19
2	ISSUED FOR BID AND PERMIT	2025.04.04
3	ISSUED FOR ADDENDUM 1	2025.04.15

CLIENT  
**WATERLOO REGION DISTRICT SCHOOL BOARD**  
51 ARDELT AVE., KITCHENER, ON

PROJECT  
**WRDSB BLUEVALE CI DEVELOPMENTAL EDUCATION CLASSROOM RENOVATION**  
80 BLUEVALE ST N, WATERLOO ON N2J 3R5

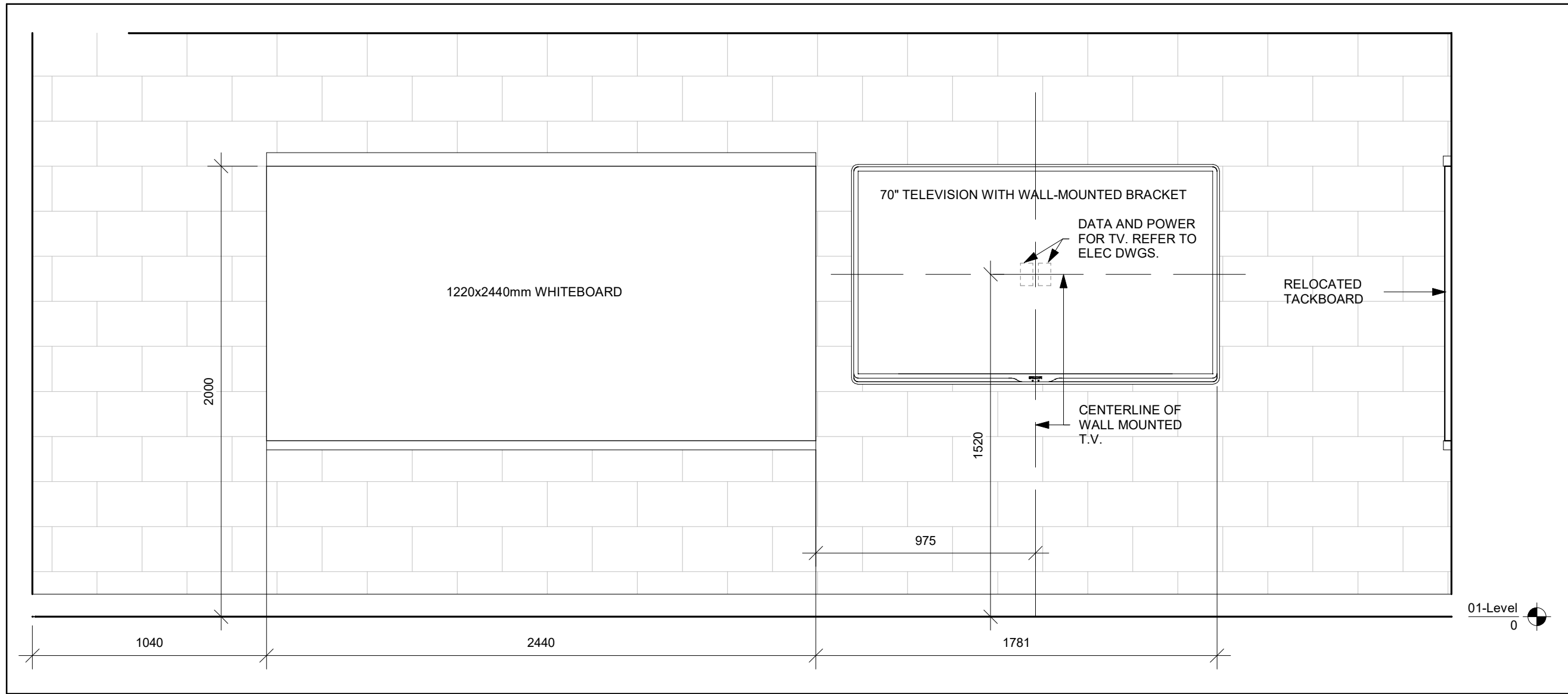
TITLE  
**PARTIAL FLOOR, CEILING PLANS AND STRUCTURAL DETAILS**

**WALTERFEDY**  
TORONTO | CALGARY | EDMONTON | KITCHENER | HAMILTON

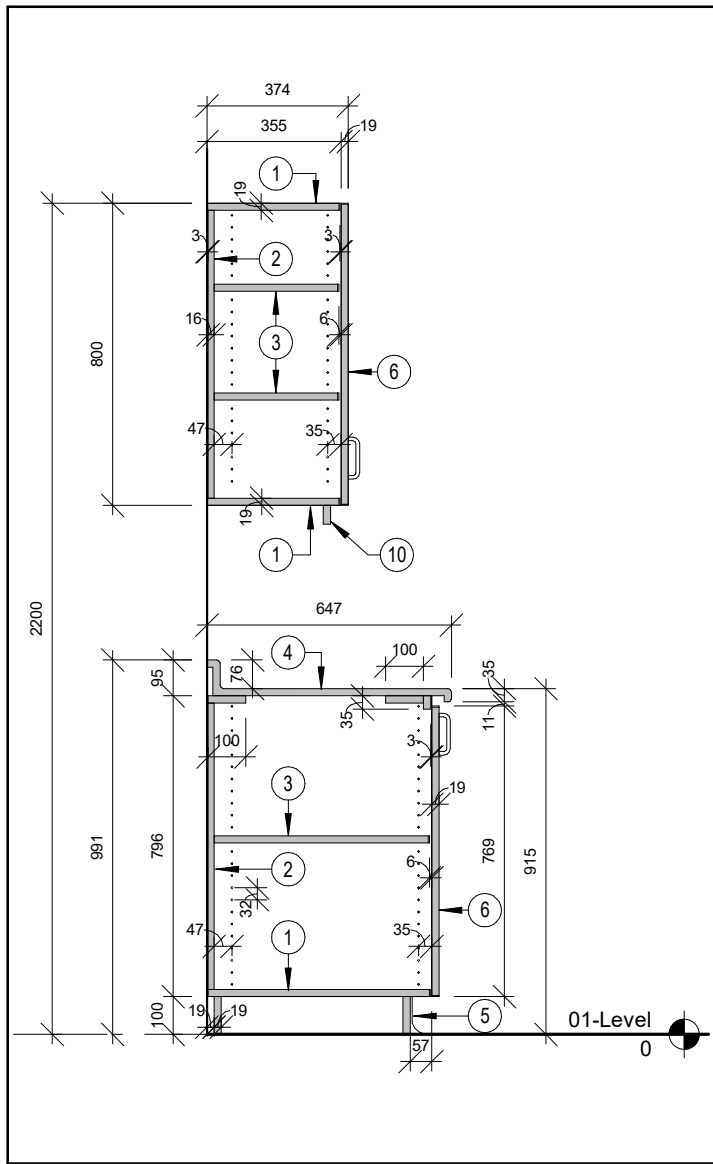
800.685.1378 walterfedy.com

SEAL	
SCALE:	AS NOTED
DATE:	2025.04.04
PROJECT NO:	2024-0057-11
DRAWN BY:	CS
CHECKED BY:	MM
SHEET NO:	A201

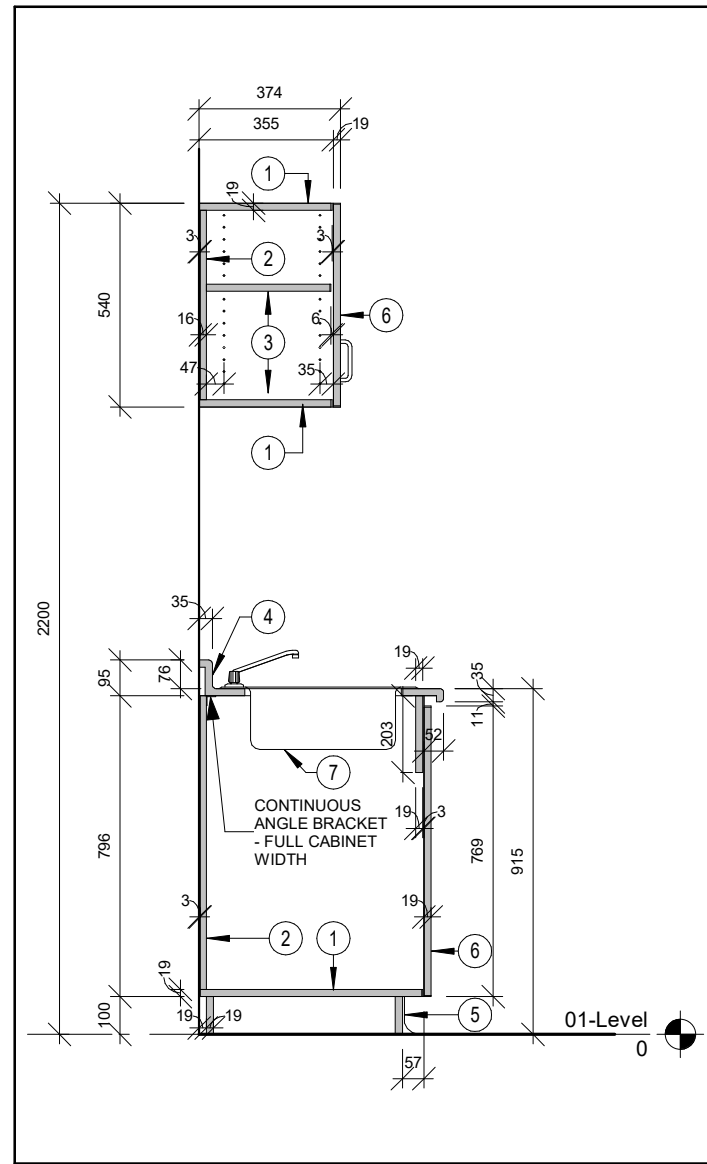




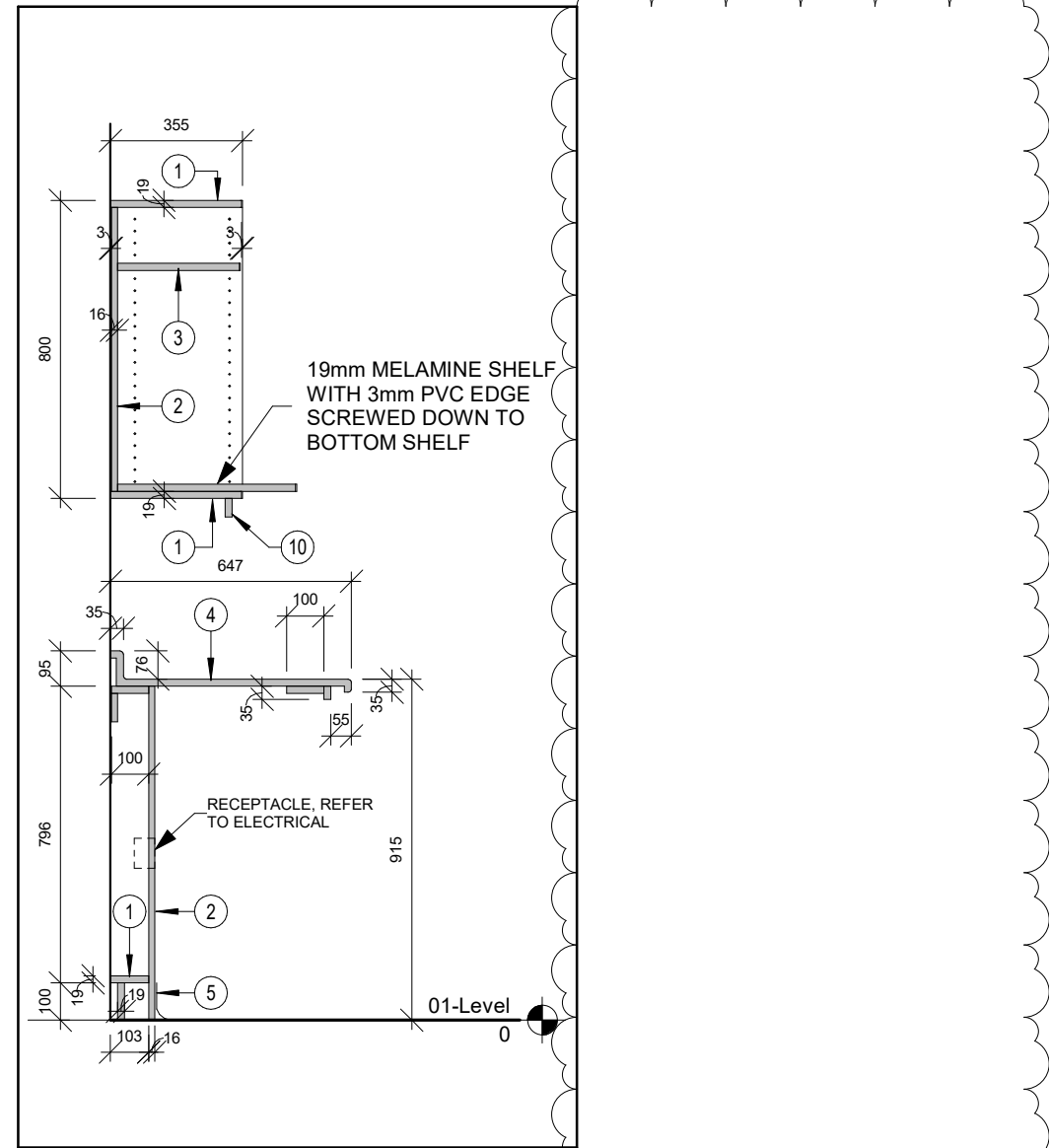
1 DEVELOPMENTAL EDUCATION CLASSROOM INTERIOR ELEVATION - EAST  
A802 Scale: 1 : 20



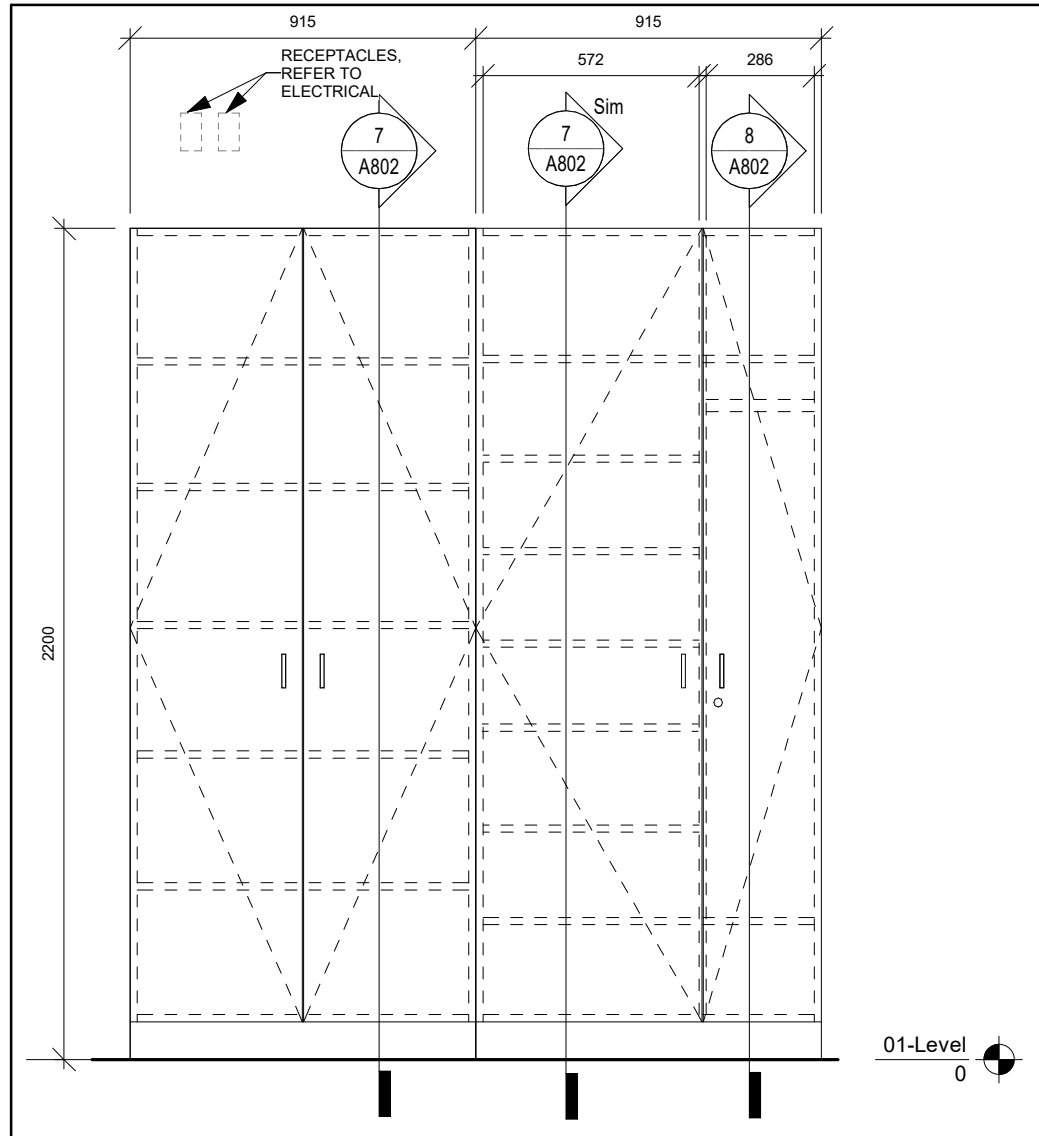
2 MILLWORK SECTION  
A802 Scale: 1 : 20



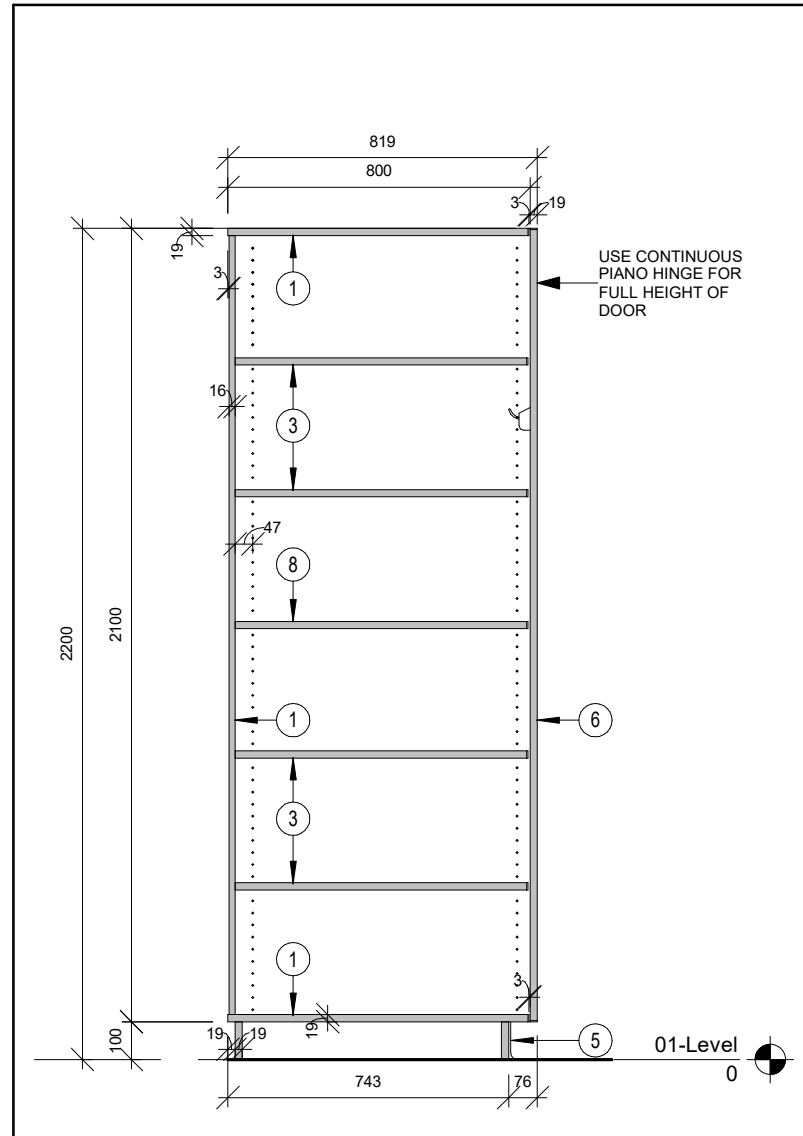
3 MILLWORK SECTION  
A802 Scale: 1 : 20



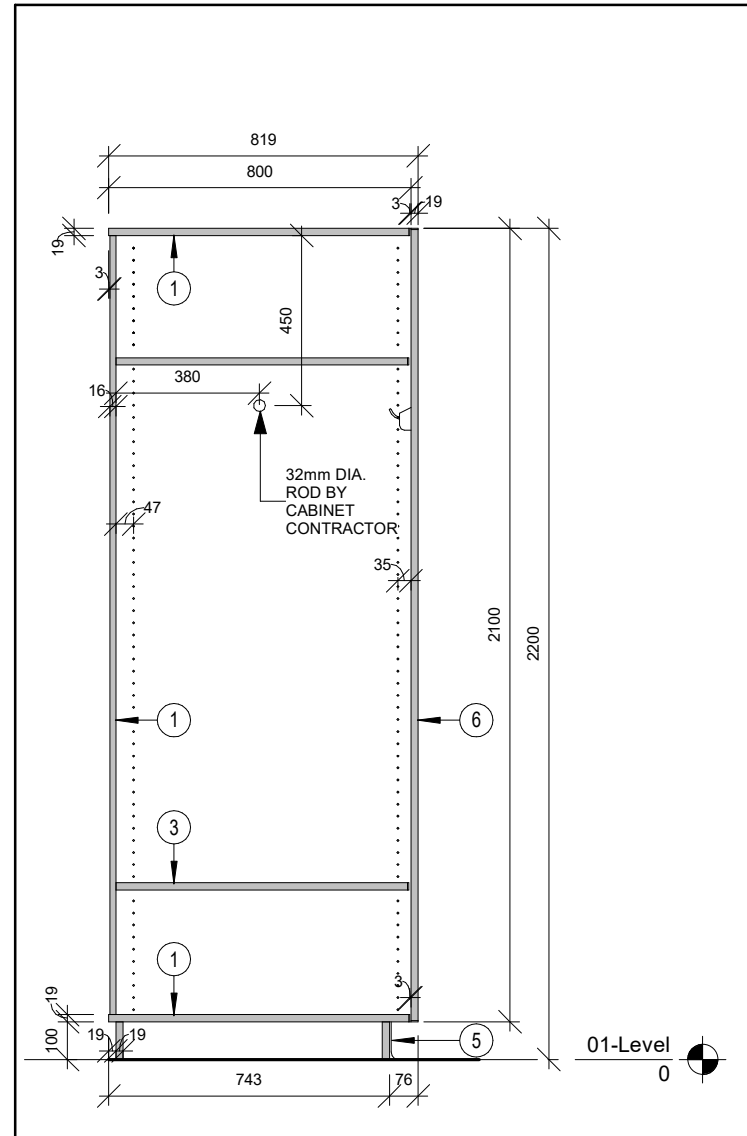
4 MILLWORK SECTION  
A802 Scale: 1 : 20



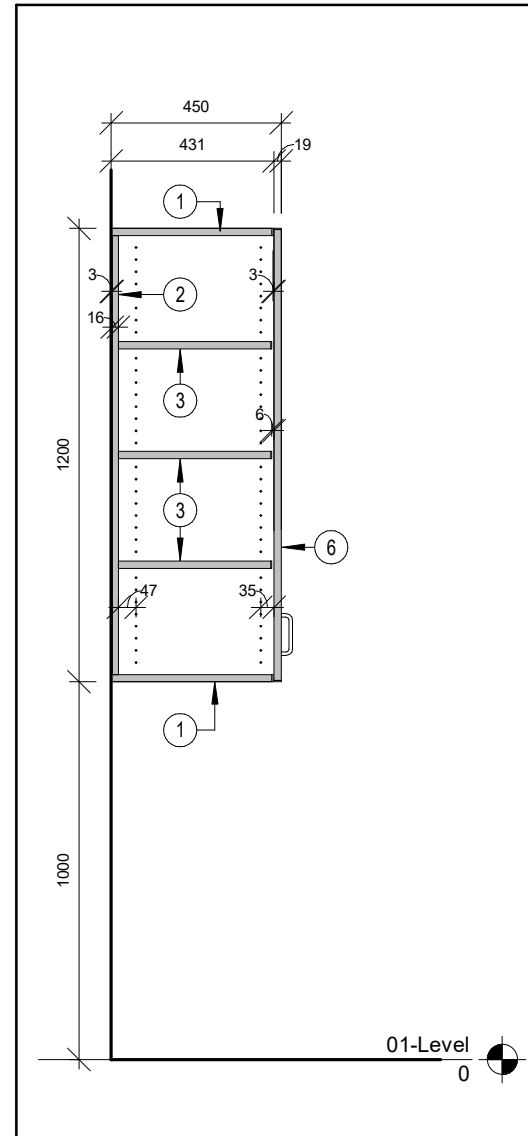
6 MILLWORK ELEVATION  
A802 Scale: 1 : 20



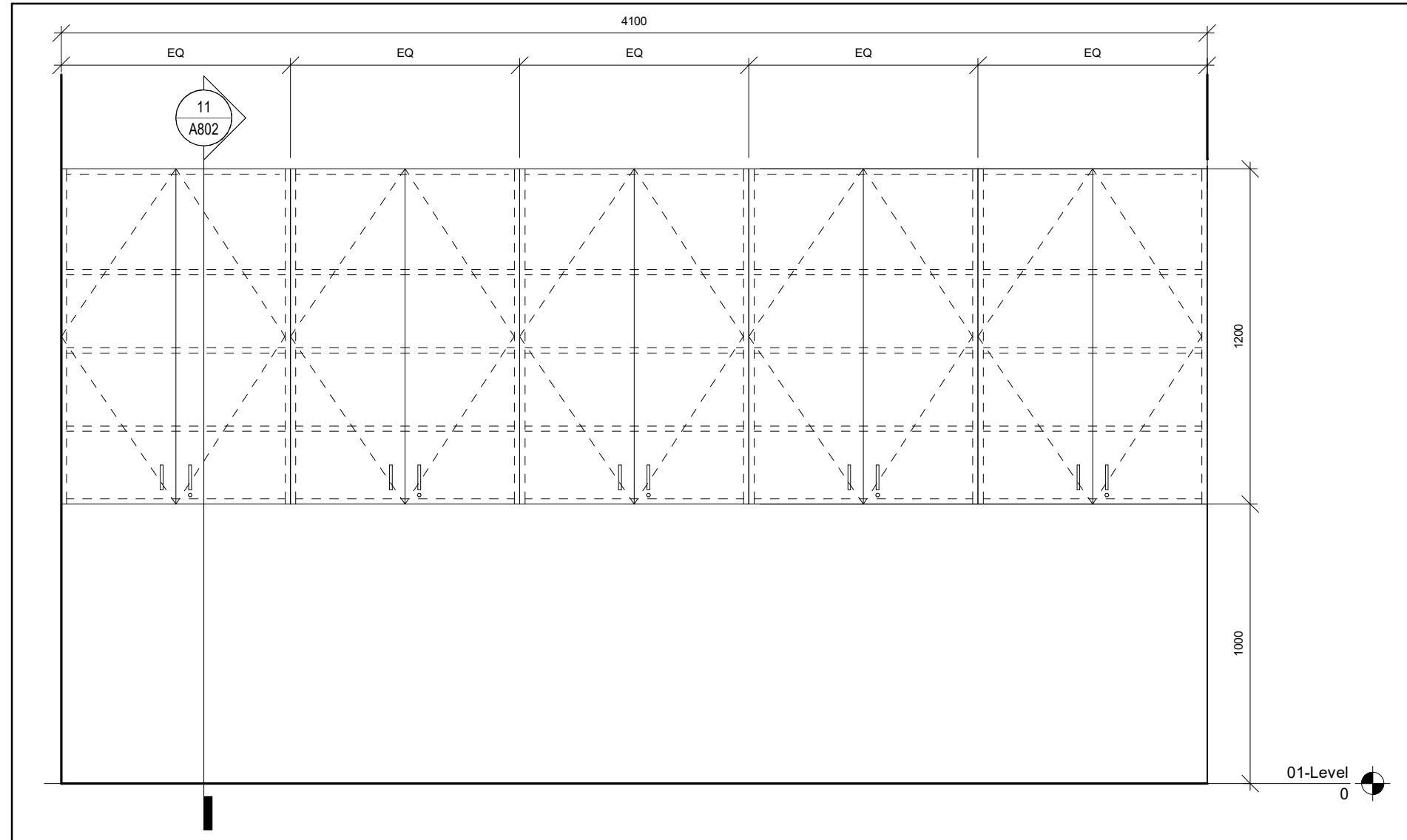
7 MILLWORK SECTION  
A802 Scale: 1 : 20



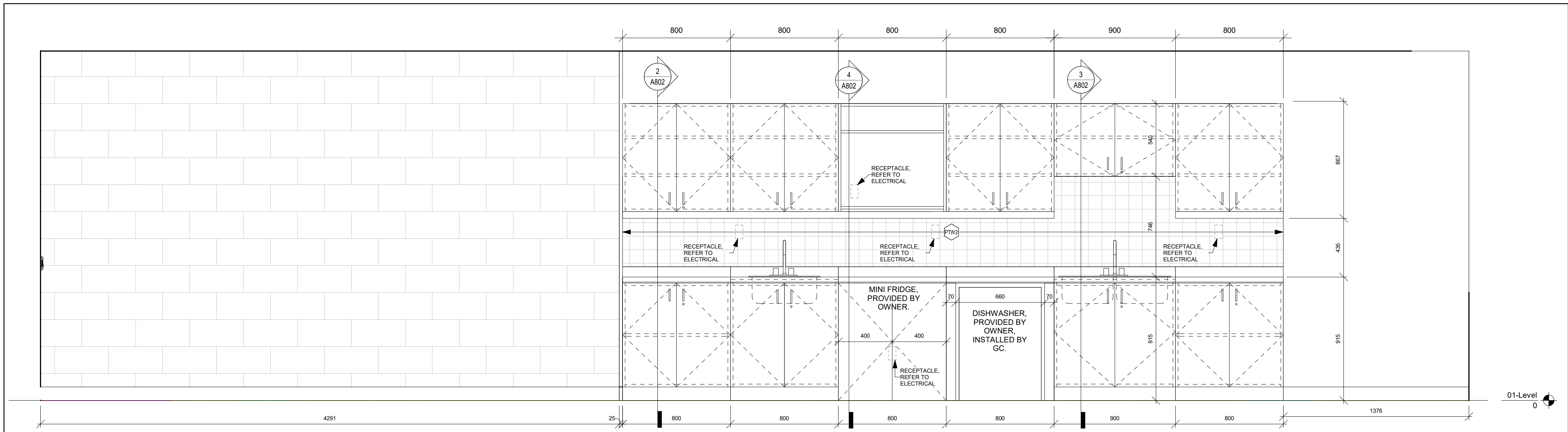
8 MILLWORK SECTION  
A802 Scale: 1 : 20



11 MW SECTION  
A802 Scale: 1 : 20



10 STORAGE ROOM INTERIOR ELEVATION - WEST  
A802 Scale: 1 : 20



9 DEVELOPMENTAL EDUCATION CLASSROOM INTERIOR ELEVATION - WEST  
A802 Scale: 1 : 20

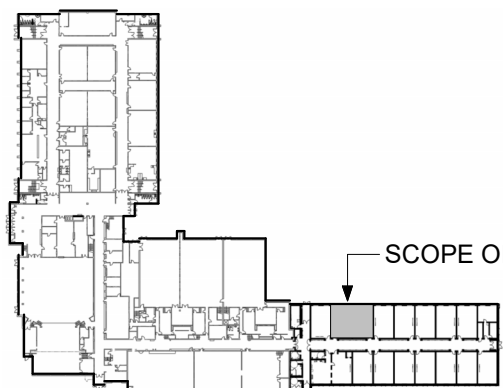
#### MILLWORK DRAWING NOTES:

- NOTES:**
1. PROVIDE CLASSROOM CYLINDER LOCK AT ALL TEACHERS CLOSETS, REFER TO SPECIFICATIONS.
  2. PROVIDE SCHLAGE CL100PB AT ALL CABINET DOORS, REFER TO SPECIFICATIONS.
  - 1 19mm MELAMINE TOP, BOTTOM C/W 3mm PVC EDGE.
  - 2 16mm MELAMINE BACK C/W 3mm PVC EDGE WHERE EXPOSED.
  - 3 19mm MELAMINE ADJUSTABLE SHELF WITH 3mm PVC EDGES.
  - 4 POST FORMED PLASTIC LAMINATE COUNTERTOP C/W 76 HIGH BACKSPLASH ON STOCK.
  - 5 100mm HIGH RUBBER BASE TOE KICK ON 19mm VENEER CORE PLYWOOD.
  - 6 19mm MALAMINE DOOR C/W 3mm PVC EDGE ON ALL EXPOSED EDGES.
  - 7 STAINLESS STEEL SINK, REFER TO MECHANICAL.
  - 8 19mm MELAMINE FIXED SHELF C/W 3mm PVC EDGE.
  - 9 LOCKABLE CASTERS, REFER TO SPECIFICATIONS.
  - 10 50 HIGH MELAMINE PNAEL VALANCE x 19mm

CLIENT LOGO



KEYPLAN



SCOPE OF WORK

No.	ISSUANCE	DATE
1	ISSUED FOR 100% OWNER REVIEW	2025.03.19
2	ISSUED FOR BID AND PERMIT	2025.04.04
3	ISSUED FOR ADDENDUM 1	2025.04.15

CLIENT

WATERLOO REGION DISTRICT  
SCHOOL BOARD

51 ARDELT AVE., KITCHENER, ON

PROJECT

WRDSB BLUEVALE CI DEVELOPMENTAL  
EDUCATION CLASSROOM RENOVATION

80 BLUEVALE ST N, WATERLOO ON N2J 3R5

TITLE

MILLWORK ELEVATIONS AND  
SECTIONS

**WALTERFEDY**

TORONTO | CALGARY | EDMONTON | KITCHENER | HAMILTON

800.685.1378 walterfedy.com

SEAL

REPRODUCTION OR DISTRIBUTION FOR PURPOSES OTHER THAN AUTHORIZED BY  
WALTERFEDY, A PART OF WF GROUP, IS FORBIDDEN. CONTRACTORS SHALL VERIFY AND  
BE RESPONSIBLE FOR ALL DIMENSIONS AND CONDITIONS ON THE JOB AND REPORT ANY  
VARIATIONS FROM THE DIMENSIONS AND CONDITIONS SHOWN ON DRAWINGS TO  
WALTERFEDY, A PART OF WF GROUP. -DO NOT SCALE THIS DRAWING-

COPYRIGHT © 2024 WalterFedy, A Part of WF Group Inc.

SCALE: AS NOTED  
DATE: 2025.04.04  
PROJECT NO: 2024-0057-11  
DRAWN BY: CS  
CHECKED BY: MM

SHEET NO:

**A802**

April 15, 2025

Client: Walterfeddy  
675 Queen Street South, Suite 111  
Kitchener, ON N2M 1A1

RE: Bluevale Collegiate Institute – Special  
Education Renovations  
Waterloo, ON

Job #: 24381

Attn: Cathy Steffler, Senior Project Administrator/Maria Melo, OAA, MRAIC, Architect, Senior Associate/Claire Schubert, Architectural Designer

## ADDENDUM 01

### MECHANICAL

#### Item 1

- 1.0 Reference Attached Reissued Drawing M2.1
  - .1 Sinks relocated as per architectural update, all associated water and sanitary piping relocated as necessary.

### ELECTRICAL

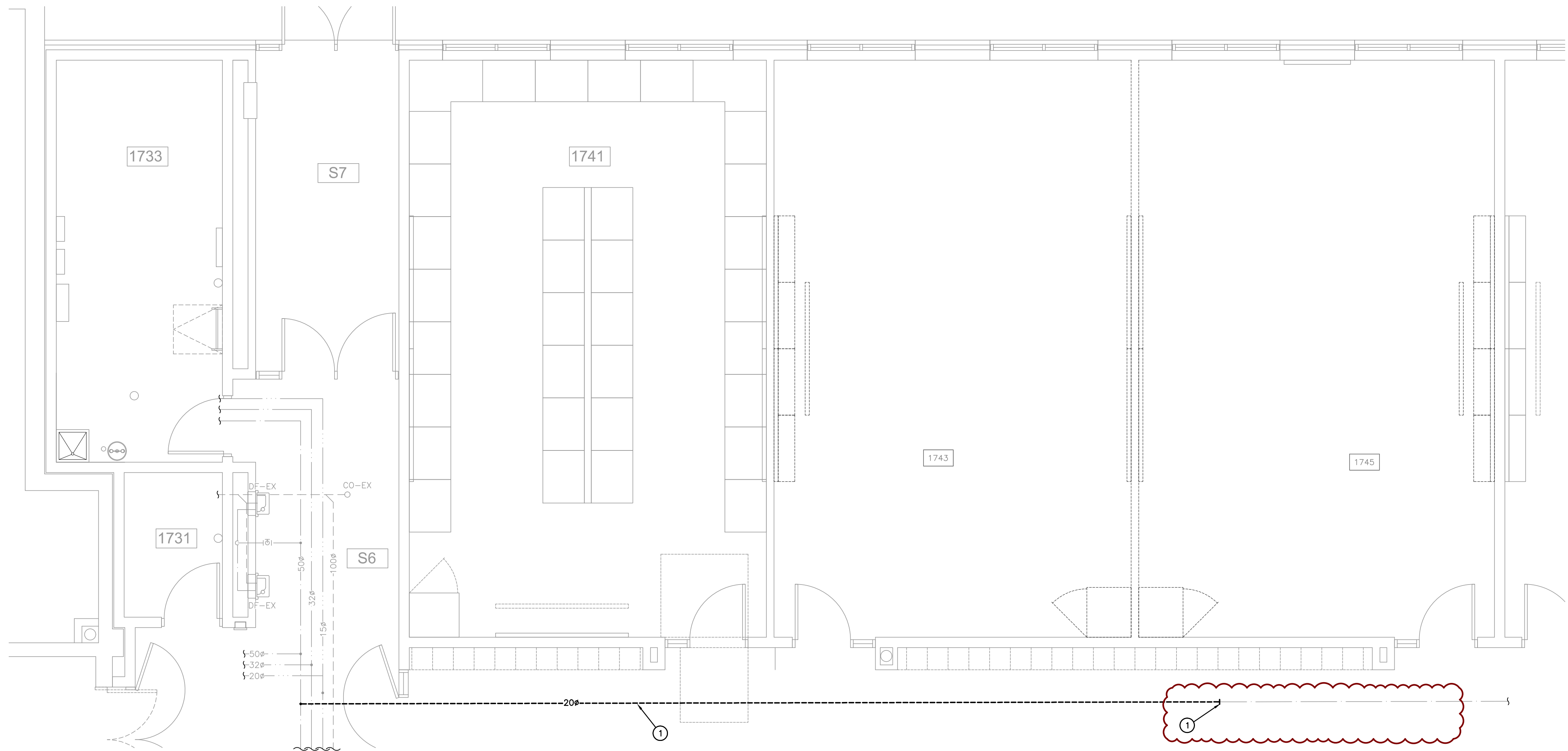
#### Item 1

- 1.0 Reference Attached Reissued Drawings E1.1 and E3.1
  - .1 Revise detail 'D/E1.1' as shown on attached reissued drawing E1.1.
  - .2 Revise electrical legend as shown on attached reissued drawing E1.1.
  - .3 Revise light fixture schedule as shown on attached reissued drawing E1.1.
  - .4 Revise lighting layout to suit architectural revisions as shown on attached reissued drawing E3.1.
  - .5 Revise lighting controls as shown on attached reissued drawing E3.1.
  - .6 Provide lighting control devices for colour tuning control as shown on attached reissued drawing E3.1.
  - .7 Revise receptacle and data layout to suit architectural revisions as shown on attached reissued drawing E3.1.
  - .8 Revise location of assistive listening system to suit architectural revisions as shown on attached reissued drawing E3.1.

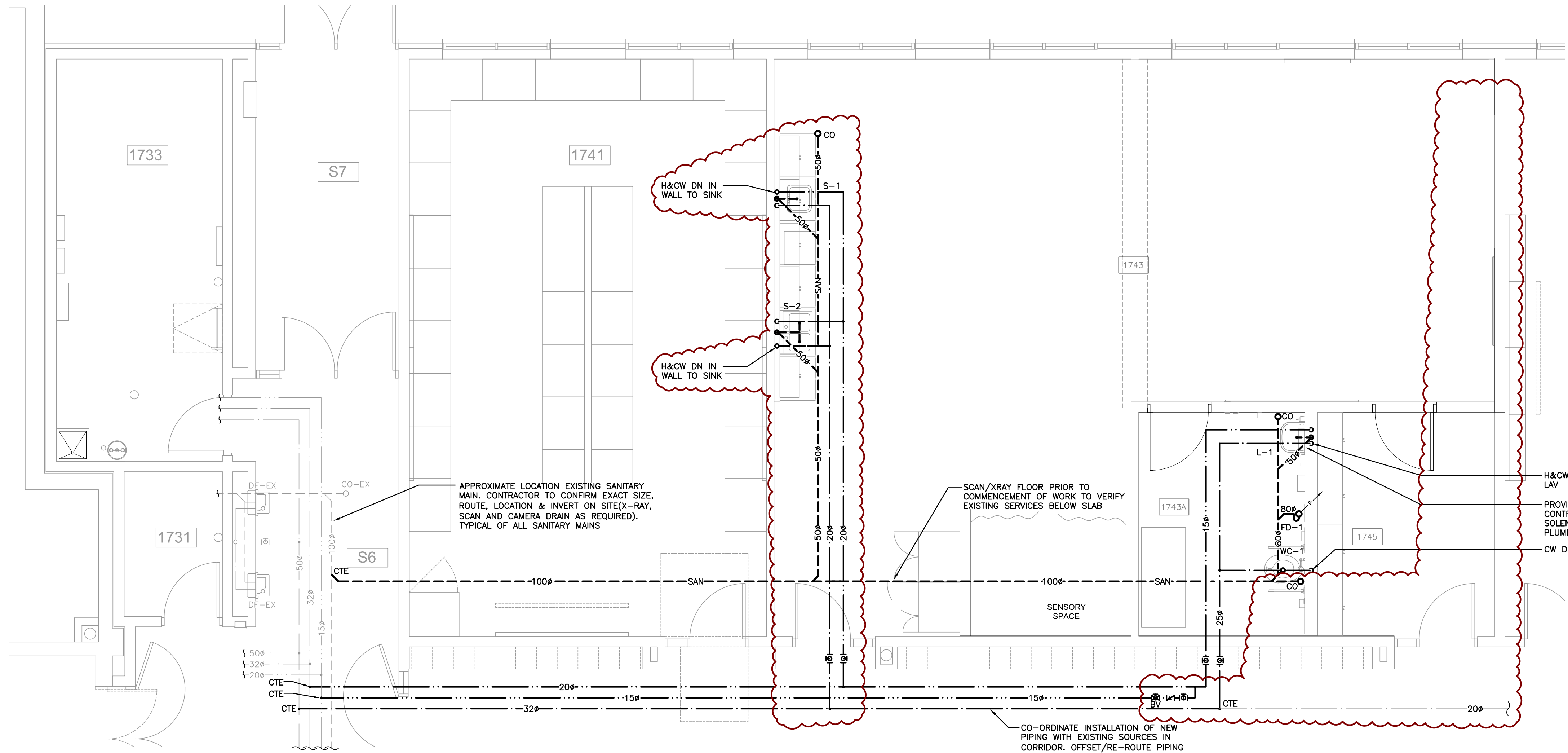
Steve Oatley  
Lead Designer, Partner

24381 Addendum 01 (M&E-Various)(various reissued dwgs) Apr 15 25 .docx  
so/smb





PLUMBING DEMOLITION FLOOR PLAN  
SCALE: 1:50



PLUMBING RENOVATION FLOOR PLAN  
SCALE: 1:50

#### GENERAL DEMOLITION NOTES

- EXISTING MECHANICAL ITEMS NOT SHOWN SHALL REMAIN UNLESS NOTED OTHERWISE.
- EXISTING MECHANICAL ITEMS SHOWN BUT NOT NOTED AS BEING REMOVED OR RENOVATED SHALL REMAIN AS PRESENTLY INSTALLED AND OPERATING.
- THIS CONTRACTOR SHALL BE RESPONSIBLE FOR VERIFYING ON SITE ALL LOCATIONS AND SIZES OF ALL SERVICES & EQUIPMENT PRIOR TO THE COMMENCEMENT OF WORK.
- ALL OPENINGS THAT RESULT FROM THE REMOVAL OF EQUIPMENT OR SERVICES SHALL BE NEATLY PATCHED WITH SUITABLE NEW MATERIALS TO SUIT EXISTING CONSTRUCTION.
- PLUMBING VENTS ARE NOT INDICATED OR IDENTIFIED. REMOVE ALL REDUNDANT VENTS WHILE MAINTAINING INTEGRITY OF EXISTING SYSTEMS TO REMAIN.
- REMOVAL OF EXISTING PIPING, OR DUCT SYSTEMS INCLUDES REMOVAL OF ALL HANGERS, INSULATION, FITTINGS, ETC.
- MAINTAIN INTEGRITY OF EXISTING SYSTEMS THAT ARE TO REMAIN OR BE MODIFIED.
- INSTALL NEW SYSTEM OR SERVICES WHERE REQUIRED TO MAINTAIN SYSTEM OPERATION PRIOR TO DEMOLITION OF EXISTING SERVICES.
- THIS CONTRACTOR IS TO REMOVE & REPLACE CEILINGS AS REQUIRED FOR REMOVAL/REPLACEMENT OF SERVICES.

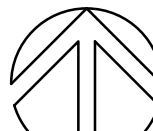
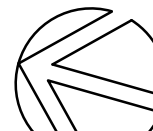
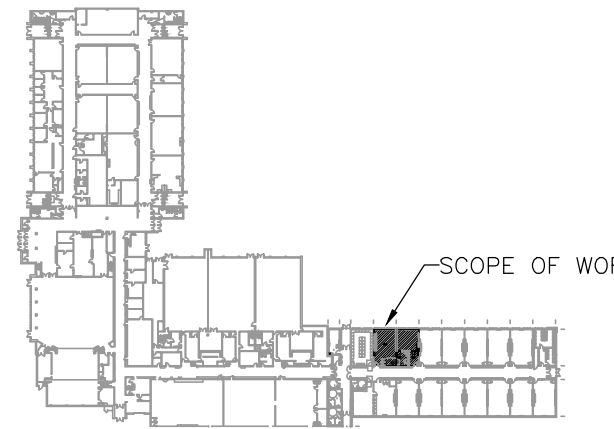
#### SPECIFIC DEMOLITION NOTES

- CUT & REMOVE EXISTING 20" CW BACK TO CW MAIN.

CLIENT LOGO



KEYPLAN



TRUE NORTH

PROJECT NORTH

No.	ISSUANCE	DATE
1	ISSUED FOR 100% OWNER REVIEW	2025.03.19
2	ISSUED FOR BID AND PERMIT	2025.04.04
3	ISSUED FOR ADDENDUM 1	2025.04.15



The contractor shall verify all dimensions and report all errors and discrepancies to the Consultant before commencement of the work. The drawings show general arrangement of services. Follow as closely as actual building construction will permit. Obtain approval for relocation of service from Consultant before commencement of the work. The drawings do not indicate all offsets fitting and accessories which may be required. Provide the same to meet the required conditions. Drawings and specifications, etc., prepared and issued by the consultant are the property of the consultant and must be returned at the completion of the project. These documents are not to be duplicated or copied without the consent of the Consultant. Do not scale this drawing. © 2025 DEI Consulting Engineers Inc.

CLIENT

#### WATERLOO REGION DISTRICT SCHOOL BOARD

51 Ardelt Ave, Kitchener ON N2C 2R5

PROJECT

#### WRDSB Bluevale CI Dev. Ed. Classroom

80 Bluevale St N, Waterloo ON N2J 3R5

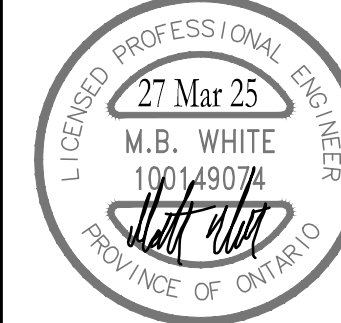
#### PLUMBING PART PLANS - DEMOLITION & RENOVATION

## WALTERFEDY

TORONTO | CALGARY | EDMONTON | KITCHENER | HAMILTON

800.685.1378 walterfedy.com

SEAL



SCALE: AS NOTED

DATE: 2025.03.19

PROJECT NO: 2024-0057-10

DRAWN BY: CSP

CHECKED BY: SO

SHEET NO:

M2.1



## E1.1

## EXISTING PANEL 'LP-AA' SCHEDULE

VOLTAGE: 120/208 VOLTS  
PHASE: 3P, 4W  
MAINS: 225A  
NEUTRAL BUS: FULL  
MOUNTING: SURFACE  
NOTES: EXISTING SQUARE D CAT. NQ442L2

ER	LIGHTING - 1741	20A	1	2	20A	LIGHTING - 1743	ER
D	LIGHTING - 1745	20A	3	4	20A	LIGHTING - 1747	D
ER	SPARE	15A	5	6	15A	SPARE	ER
ER	WKSTN - 1741	15A	7	8	15A	WKSTN - 1741	ER
ER	WKSTN - 1741	15A	9	10	15A	WKSTN - 1741	ER
ER	WKSTN - 1741	15A	11	12	15A	WKSTN - 1741	ER
ER	WKSTN - 1741	15A	13	14	15A	WKSTN - 1741	ER
ER	WKSTN - 1741	15A	15	16	15A	SPARE	ER
ER	WKSTN - 1741	15A	17	18	15A	PROJECTOR/TEACHING STN.	ER
ER	RECEPT - 15A	19	20	20	15A	RECEPT - HUB ROOM	ER
ER	RECEPT - 15A	21	22	22	15A	SOUND FIELD AMP	ER
ER	RECEPT - 15A	23	24	24	15A	PROJECTOR/TEACHING STN.	ER
ER	RECEPT - HUB ROOM	15A	25	26	15A	SPARE IN HUB ROOM	ER
ER	RECEPT - 15A	27	28	28	15A	RECEPT	ER
ER	PROJECTOR/TEACHING STN.	15A	29	30	15A	B.A.S. PANEL	ER
ER	SOUND FIELD AMP	15A	31	32	15A	RECEPT - 1747	ER
ER	RECEPT - HK	20A	33	34	15A	RECEPT - 1747	ER
ER	EF-2	15A	35	36	15A	SPARE	ER
NB	SPARE	15A	37	38	15A	SPARE	D
D	SPARE	15A	39	40	15A	SPARE	D
	SPARE	15A	41	42	15A	SPARE	ER

## PROPOSED PANEL 'LP-AA' SCHEDULE

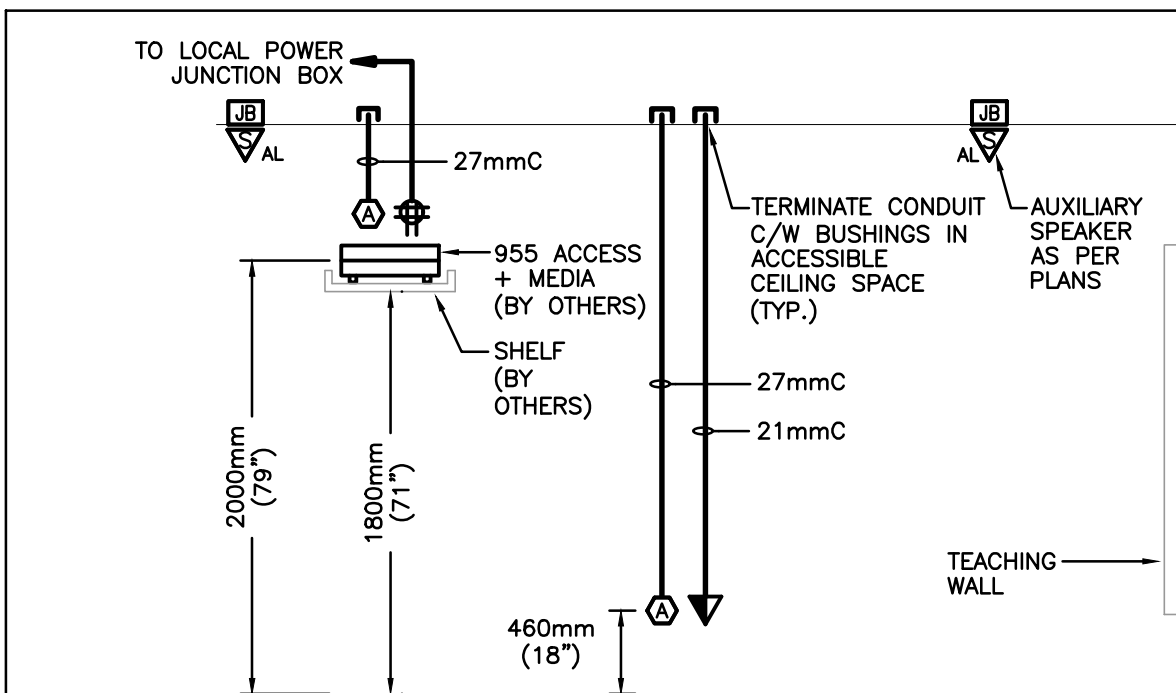
ER	LIGHTING - 1741	20A	1	2	20A	LIGHTING - 1743	ER
NB	LIGHTING - 1745	20A	3	4	20A	LIGHTING - 1747	NB
ER	1743A RECEPT	20A	5	6	20A	1743A CHANGE TABLE	ER
ER	WKSTN - 1741	15A	7	8	15A	WKSTN - 1741	ER
ER	WKSTN - 1741	15A	9	10	15A	WKSTN - 1741	ER
ER	WKSTN - 1741	15A	11	12	15A	WKSTN - 1741	ER
ER	WKSTN - 1741	15A	13	14	15A	WKSTN - 1741	ER
ER	WKSTN - 1741	15A	15	16	15A	EF-1	ER
ER	WKSTN - 1741	15A	17	18	15A	1743 DOOR OP.	ER
ER	RECEPT - 15A	19	20	20	15A	RECEPT - HUB ROOM	ER
ER	RECEPT - 15A	21	22	22	15A	1743A & 1745 DOOR OP.	ER
ER	RECEPT - 15A	23	24	24	15A	1743A AUTO FAUCET	ER
ER	RECEPT - HUB ROOM	15A	25	26	15A	SPARE IN HUB ROOM	ER
ER	RECEPT - 15A	27	28	28	15A	RECEPT	ER
ER	PROJECTOR/TEACHING STN.	15A	29	30	15A	B.A.S. PANEL	ER
ER	SOUND FIELD AMP	15A	31	32	15A	RECEPT - 1747	ER
ER	RECEPT - HK	20A	33	34	15A	RECEPT - 1747	ER
ER	EF-2	15A	35	36	15A	1743A LIFT RECEPT	ER
RW	1743 FRIDGE RECEPT	15A	37	38	20A	1743 O/C RECEPT	RW
NB	1743 MICROWAVE RECEPT	20A	39	40	20A	1743 O/C RECEPT	RW
NB	WR 1743A HAND DRYER	20A	41	42	15A	SPARE	ER

### DESIGNATION

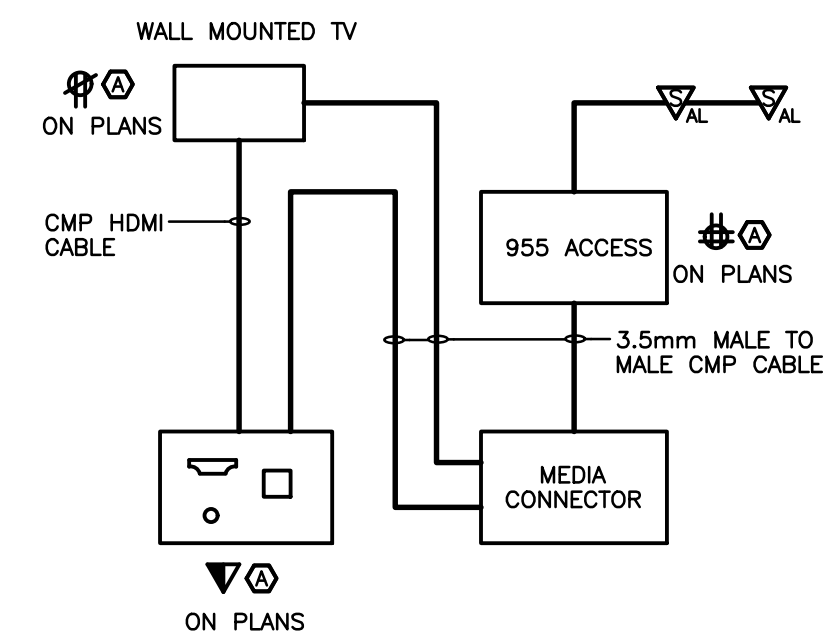
'ER' INDICATES EXISTING SERVICE AND BREAKER THAT SHOULD REMAIN UNTOUCHED  
'SP' INDICATES EXISTING BREAKER THAT MAY BECOME SPARE DUE TO DEMOLITION. (CONFIRM ON SITE)  
'RW' INDICATES EXISTING BREAKER THAT SHOULD BE REWIRED TO SERVICE DEVICES INDICATED ON PLAN  
'SB' INDICATES SPARE BREAKER TO BE USED FOR NEW SERVICE INDICATED.  
'NB' INDICATES NEW BREAKER AND WIRING TO SERVICE INDICATED. PROVIDE MOUNTING HARDWARE AS REQUIRED.  
'D' INDICATES EXISTING BREAKER TO BE REMOVED COMPLETE. PROVIDE FILLER PLATES AS REQUIRED.

NOTES: THIS CONTRACTOR IS TO INVESTIGATE BREAKERS AND REVISE PANEL SCHEDULES TO SUIT RENOVATION, NOTING ANY BREAKERS THAT BECOME SPARE DUE TO DEMOLITION. THIS CONTRACTOR IS ALSO TO NOTIFY THE CONSULTANT OF ANY BREAKERS THAT ARE INDICATED TO BE DEMOLISHED OR REUSED, BUT WHICH ARE IN USE BY OTHER DEVICES OR SERVICES.

\*INDICATES 5mA GROUND FAULT STYLE BREAKER



ROOM ELEVATION



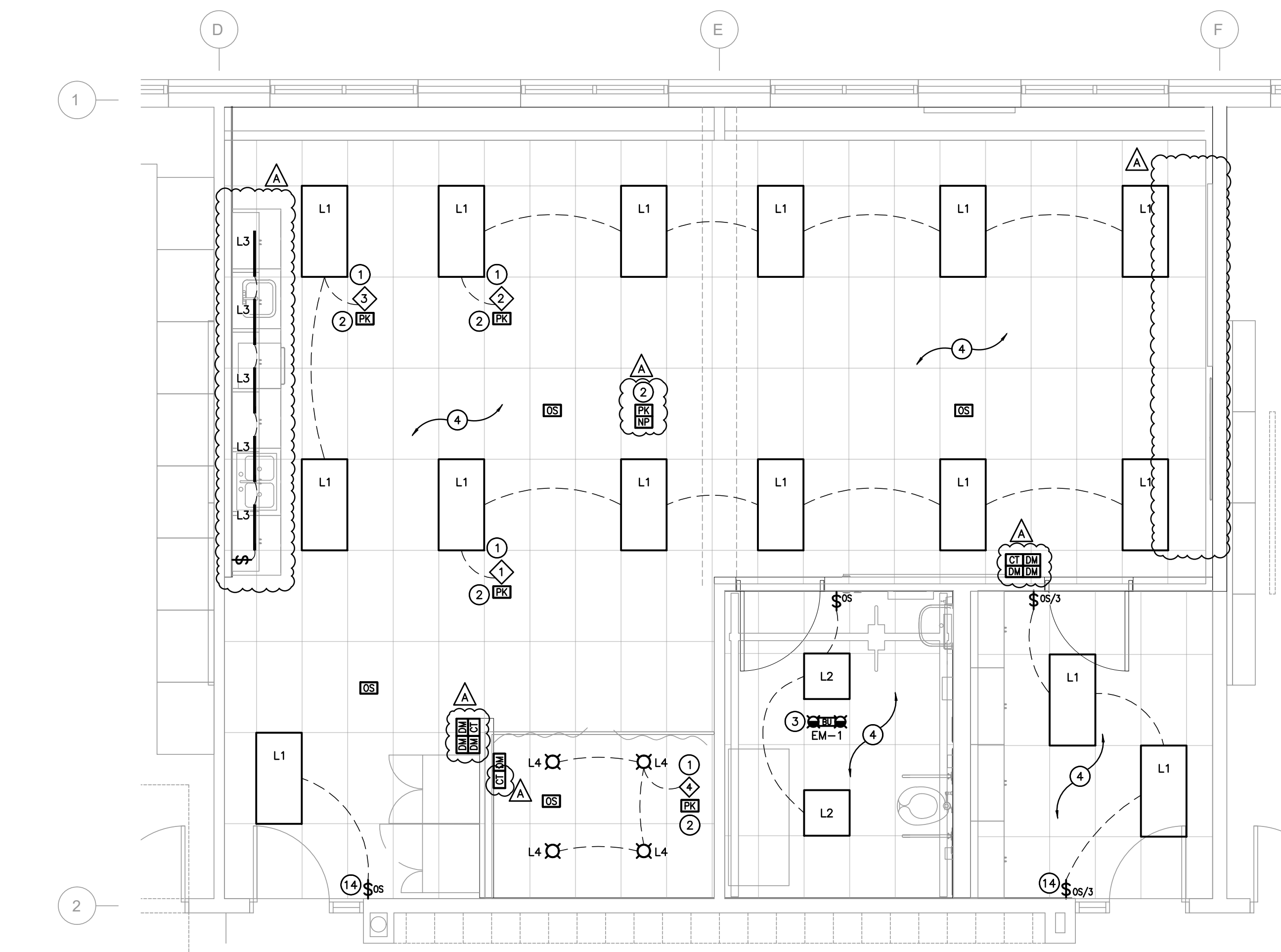
WIRING DIAGRAM

### NOTES:

ASSISTIVE LISTENING SYSTEM COMPONENTS, CABLING, CONNECTIONS, SETUP AND COMMISSIONING BY SCHOOL BOARD VENDOR (TOPEND) AS PART OF CASH ALLOWANCE. SHOWN FOR REFERENCE TO ELECTRICAL CONTRACTOR. ELECTRICAL CONTRACTOR TO PROVIDE DEVICE ROUGH-INS AND OUTLETS ONLY AS SHOWN. REFER TO FLOOR PLANS FOR QUANTITIES.

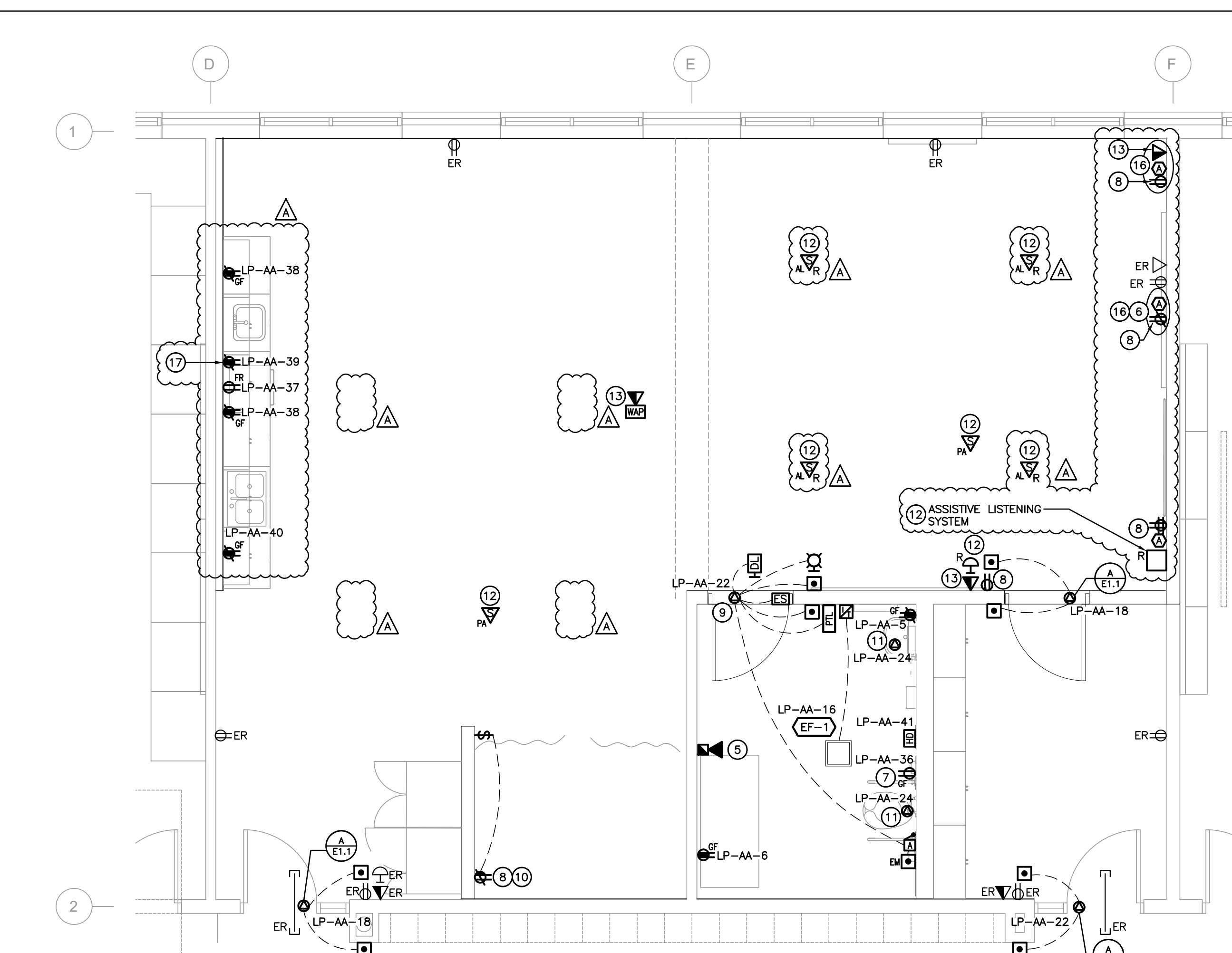
## A-ASSISTIVE LISTENING SYSTEMS

SCALE: 1:50



## LIGHTING RENOVATION PART PLAN

SCALE: 1:50



## POWER & SYSTEMS RENOVATION PART PLAN

SCALE: 1:50

## GENERAL RENOVATION NOTES

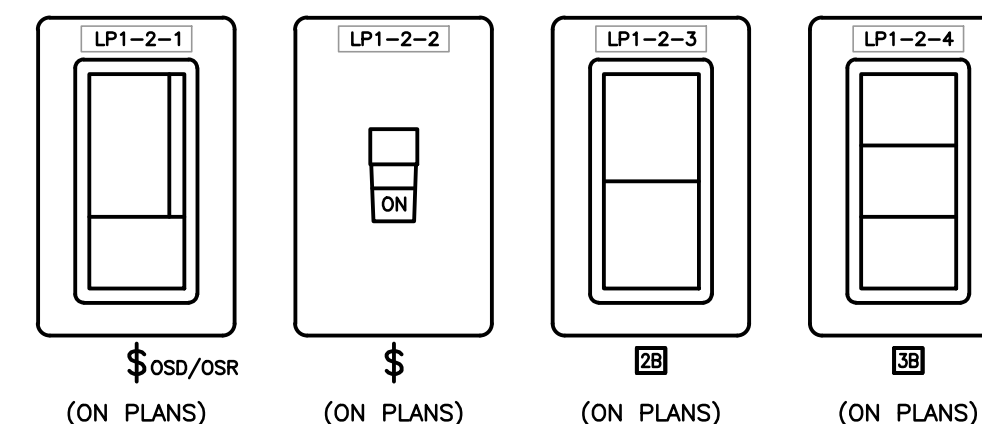
- 'ER' INDICATES EXISTING ITEM TO REMAIN.
- 'R' INDICATES EXISTING ITEM IN RELOCATED POSITION.
- ALL DEVICES SHOWN ARE NEW UNLESS OTHERWISE NOTED.
- EXISTING ELECTRICAL EQUIPMENT NOT SHOWN SHALL REMAIN UNLESS OTHERWISE NOTED.
- MAINTAIN SERVICE TO ALL EXISTING DEVICES TO REMAIN.
- REVISE PANEL DIRECTORIES TO SUIT CHANGES (TYPED).

## SPECIFIC RENOVATION NOTES

- INDICATES CONTROL ZONE GROUPS OF LIGHT FIXTURES WITHIN EACH AREA. REFER TO LIGHTING CONTROL DETAILS AND SEQUENCE OF OPERATION.
- INDICATES DIGITAL RELAY(S) WITHIN ACCESSIBLE CEILING SPACE FOR CONTROL OF NOTED OCCUPANCY SENSOR(S) TO BE CONNECTED TO EXISTING LOCAL LIGHTING CIRCUIT.
- NOTED EMERGENCY BATTERY UNIT IS TO BE CONNECTED TO UNSWITCHED SIDE OF EXISTING LIGHTING CIRCUIT WITHIN ROOM.
- FIXTURES IN INDICATED AREA ARE TO BE CONNECTED TO EXISTING CIRCUIT AND NEW CONTROLS AS SHOWN.
- CONNECT NEW FIRE ALARM SIGNALING DEVICE TO EXISTING LOCAL SIGNALING CIRCUIT. RE-VERIFY PORTIONS OF ALARM SYSTEM TO CAN/ULC-S537. REFER TO SPECIFICATIONS FOR FURTHER DETAILS AND REQUIREMENTS.
- INDICATES DEVICES FOR WALL MOUNTED TELEVISION. COORDINATE MOUNTING HEIGHT WITH OWNER PRIOR TO ROUGH-IN.
- PROVIDE RECEPTACLE AT HIGH LEVEL FOR CEILING MOUNTED LIFT. RECEPTACLE TO BE INSTALLED AT 152mm BELOW FINISHED CEILING.
- INDICATED DEVICE IS TO BE CONNECTED TO EXISTING RECEPTACLE CIRCUIT WITHIN ROOM.
- PROVIDE ROUGH-IN AND DEVICES FOR UNIVERSAL WASHROOM. REFER TO UNIVERSAL WASHROOM DETAIL B/E1.1 FOR ADDITIONAL INFORMATION.
- INDICATED DEVICE IS TO BE MOUNTED 6" (152mm) BELOW CEILING. COORDINATE WITH ARCHITECTURAL ELEVATIONS PRIOR TO ROUGH-IN.
- INDICATES STEP DOWN TRANSFORMER FOR AUTOMATIC FIXTURE PROVIDED BY FIXTURE AND INSTALLED BY ELECTRICAL CONTRACTOR. ELECTRICAL CONTRACTOR TO CONNECT 120V BRANCH CIRCUIT TO STEP DOWN TRANSFORMER PRIMARY AND CONNECT TRANSFORMER SECONDARY TO EACH FIXTURE AS NOTED.
- INDICATES EXISTING DEVICE TO BE RELOCATED AND EXISTING WIRING TO BE EXTENDED TO SUIT NEW LOCATION. WIRING BY OTHERS.
- INDICATES NEW VOICE/DATA ROUGH-IN WITH CABLING AND TERMINATION BY SCHOOL BOARD VENDORS.
- MOUNT DEVICE IN BACKBOX MADE AVAILABLE DURING DEMOLITION. PROVIDE NEW STAINLESS STEEL COVERPLATE TO SUIT NEW DEVICE.
- INDICATED DEVICES ARE TO BE MOUNTED ABOVE NEW MILLWORK CABINET. COORDINATE LOCATION WITH MILLWORK ELEVATIONS.
- NOTED DEVICES ARE TO BE SURFACE MOUNTED ON EXISTING WALL USING WIREMOLD V700 SERIES SURFACE MOUNT RACEWAY SYSTEM. REFER TO SPECIFICATIONS FOR ADDITIONAL INFORMATION.
- INDICATED DEVICE IS TO BE MOUNTED WITHIN MILLWORK FOR MICROWAVE. COORDINATE MOUNTING HEIGHT WITH MILLWORK ELEVATIONS.

## CIRCUIT LABELS

PROVIDE P-TOUCH LABELS INDICATING PANEL AND CIRCUIT LABEL ON ALL LIGHT SWITCH, LIGHTING CONTROL STATION, AND RECEPTACLE DEVICE FACEPLATES. INCLUDE SWITCH LEG INDICATION FOR LIGHTING CONTROLS AND SWITCHES. REFER TO SPECIFICATIONS AND DETAILS.

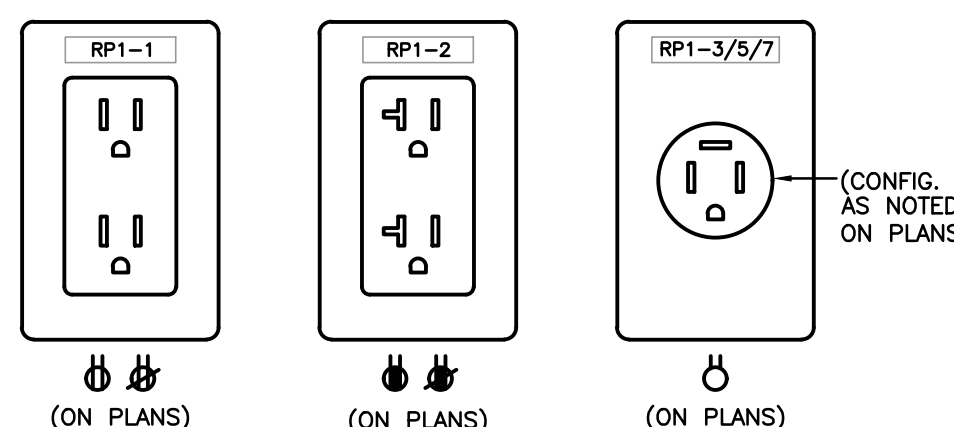


### NOTES:

- LIGHT SWITCHES ARE TO BE C/W P-TOUCH LABEL.
- LABEL IS TO BE WHITE WITH TYPE-WRITTEN BLACK LETTERING AND PLACED CENTERLINE OF SWITCH AS SHOWN.
- CIRCUIT DESCRIPTOR IS TO BE C/W POWER PANEL, CIRCUIT INDICATION, AND SWITCH LEG.

## B-LIGHT SWITCH LABELLING DETAIL

SCALE: 1:50



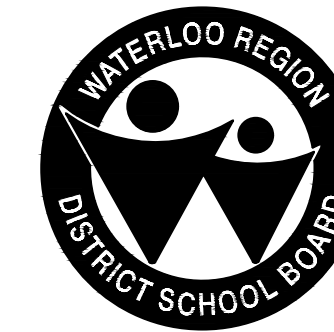
### NOTES:

- RECEPTACLES ARE TO BE C/W P-TOUCH LABEL.
- LABEL IS TO BE WHITE WITH TYPE-WRITTEN BLACK LETTERING AND PLACED CENTERLINE OF RECEPTACLE AS SHOWN.
- CIRCUIT DESCRIPTOR IS TO BE C/W POWER PANEL AND CIRCUIT INDICATION.

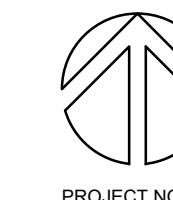
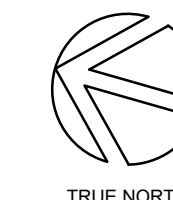
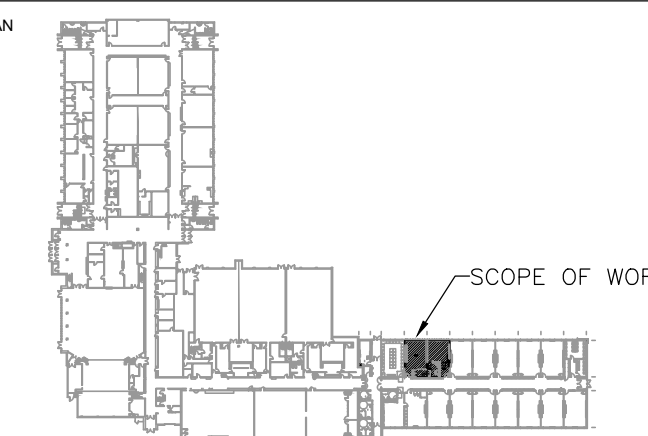
## C-RECEPTACLE LABELLING DETAIL

SCALE: 1:50

CLIENT LOGO



KEYPLAN



No.	ISSUANCE	DATE
1	ISSUED FOR 100% OWNER REVIEW	2025.03.19
2	ISSUED FOR BID AND PERMIT	2025.04.04
A	REISSUED FOR ADDENDUM 01	2025.04.15



The contractor shall verify all dimensions and report all errors and discrepancies to the Consultant before commencement of the work.  
The drawings show general arrangement of services. Follow as closely as actual building construction will permit. Obtain approval for relocation of service from Consultant before commencement of the work.  
The drawings do not indicate all offsets fitting and accessories which may be required. Provide the same to meet the required conditions.  
Drawings and specifications, etc., prepared and issued by the consultant are the property of the consultant and must be returned at the completion of the project. These documents are not to be duplicated or copied without the consent of the Consultant.  
Do not scale this drawing.  
© 2025 DEI Consulting Engineers Inc.

CLIENT

WATERLOO REGION DISTRICT SCHOOL BOARD

51 Ardelt Ave, Kitchener ON N2C 2R5

PROJECT

WRDSB Bluevale CI Dev. Ed. Classroom

80 Bluevale St N, Waterloo ON N2J 3R5

ENLARGED RENOVATION PART PLANS

WALTERFEDY

TORONTO | CALGARY | EDMONTON | KITCHENER | HAMILTON

800.685.1378 walterfedy.com

SEAL

SCALE:	AS NOTED	SHEET NO:
DATE:	2025.03.19	
PROJECT NO:	2024-0057-10	
DRAWN BY:	KV	
CHECKED BY:	ASUJ	

E3.1