

5/15/2025 10:07:25 AM C:_Revit\24162 WRCSB Glenview Park SS Elec Central (RV129)_3con35018.rvt

EQUIPMENT WIRING SCHEDULE																																						E = ELECTRICAL M = MECHANICAL O = OTHERS	
Mechanical Item	Description	Provided By	Electrical Data				Starter				Ctrl Device				Isolating Device				Remote Items														Other		Interlock		Remarks		
			Size hp/kW/amps	Phase	MCCP	Magnetic	Manual	Combination	Contactors	VFD	ECM (No Separate Starter Device)	Hard/Off/Auto	On/Off Selector	High/Low/Off	Pilot Light	Disconnect	WP Disconnect	Breaker/Fuse	Starter/Device Wired by	Thermostat	RA Thermostat	Programmable Time Clock	Variable Speed Control	Current Sensor	Occ Sensor	Dual Voltage Relay	Interval Timer	VRF System Control Panel	Smoke Control System Panel	Control Panel	Wired by	Bldg Auto System	Wired By	Miscellaneous 1	Miscellaneous 2	Interlock to		Interlock by	
PHASE 1																																						PHASE 1	
EF-5	ROOFTOP EXHAUST FAN (CHEMISTRY A212)	M	120	1/4 HP	1							E				E	E	E							M					M/E	M	M				MOT. DAMPER	M	PROVIDE INDICATING LIGHT. INTERLOCK TO MOTORIZED DAMPER	
EF-6	ROOFTOP EXHAUST FAN (BIOLOGY A211)	M	120	1/4 HP	1							E				E	E	E							M					M/E	M	M				MOT. DAMPER	M	PROVIDE INDICATING LIGHT. INTERLOCK TO MOTORIZED DAMPER	
EF-7	ROOFTOP EXHAUST FAN (CHEMISTRY A212 FUME HOOD)	M	208	3/4 HP	3		E					E				E	E	E												M/E	M	M				FUME HOOD & MOT. DAMPER	ME	CONNECT TO SWITCH ON FUME HOOD. INTERLOCK TO MOTORIZED DAMPER	
SP-1	ELEVATOR SUMP (SIMPLEX)	M	208	0.5 HP	3									E		E	E												M	M/E							PROVIDE RECEPTACLE FOR HIGH LEVEL ALARM. WIRE FLOATS THROUGH CONTROL PANEL		
DS-3	DELETED																																						
CU-3	DELETED																																						
GSV	GAS SOLENOID VALVE	M	120	FHP	1												E	E							M					M/E	M	M						REFER TO PLANS FOR NUMBER & LOCATIONS	
BAS	BAS PANEL	M	120	FHP	1									E		E	E															M	M					PROVIDE TWO DATA DROPS AND RECEPTACLE. REFER TO PLANS FOR NUMBER & LOCATIONS	
NT	ACID NEUTRALIZING TANK	M	120	FHP	1									E		E	E																					PROVIDE RECEPTACLE	
EF-8	ELEVATOR MACHINE ROOM EXHAUST	M	120	1/4 HP	1									E		E	E		E					M					M/E										
PHASE 2																																							
HVAC-5	INDOOR HVAC UNIT	M	208	118 AMPS	3	125				M						E	E	E														M	M			CU-3A CU-3B		SINGLE POINT POWER CONNECTION. 102 FLA. MOTOR C/W FACTORY PROVIDED EXTERNAL JUNCTION BOX. VFD INSTALL AND POWER CONNECTION BY ELECTRICAL DIVISION	
CU-3A1	CONDENSING UNIT	M	208	61.9 A	3	70										E	E	E														M	M			HVAC-5		CU-3A IS TWO MODULES. REFER TO PLANS FOR NUMBER & LOCATIONS.	
CU-3A2	CONDENSING UNIT	M	208	61.9 A	3	70										E	E	E														M	M			HVAC-5		CU-3A IS TWO MODULES. REFER TO PLANS FOR NUMBER & LOCATIONS.	
CU-3B1	CONDENSING UNIT	M	208	61.9 A	3	70										E	E	E														M	M			HVAC-5		CU-3B IS TWO MODULES. REFER TO PLANS FOR NUMBER & LOCATIONS.	
CU-3B2	CONDENSING UNIT	M	208	61.9 A	3	70										E	E	E														M	M			HVAC-5		CU-3B IS TWO MODULES. REFER TO PLANS FOR NUMBER & LOCATIONS.	
BS-	BRANCH SELECTOR BOX	M	208	0.4 A	1									E		E	E														M	M			HVAC-5, CU-3A, CU-3B		REFER TO PLANS FOR NUMBER & LOCATIONS. PROVIDE SEPARATE CIRCUIT FOR EACH SET (X6) OF BRANCH BOXES FOR EACH CONDENSING UNIT		
CB-	CU CONTROL BOX	M	208	0.3 A	1									E		E	E														M	M			CU-3A CU-3B		REFER TO PLANS FOR NUMBER & LOCATIONS		
P-10	HVAC-5 HEATING COIL CIRCULATION PUMP	M	208	0.5 HP	3				E			E		E	E		E	E													M	M							
Notes:																																							
1 PROVIDE MAIN FEED TO UNIT. PROVIDE ADDITIONAL FEED FROM TERMINAL STRIPS WITHIN UNIT TO VARIABLE FREQUENCY DRIVE AND BACK TO UNIT (IN SEPARATE CONDUITS). COORDINATE CONDUCTOR SIZE TO AND FROM VARIABLE FREQUENCY DRIVE WITH MECHANICAL SHOP DRAWINGS.																																							

E = ELECTRICAL
M = MECHANICAL
O = OTHERS

The contractor shall verify all dimensions and report all errors and discrepancies to the Consultant before commencement of the work.
The drawings show general arrangement of services. Follow as closely as actual building construction will permit. Obtain approval for relocation of service from Consultant before commencement of the work.
The drawings do not indicate all offsets fitting and accessories which may be required. Provide the same to meet the required conditions.
Drawings and specifications, etc., prepared and issued by the Consultant are the property of the Consultant and must be returned at the completion of the project. These documents are not to be duplicated or copied without the consent of the Consultant.
Do not scale this drawing.
© 2025 DEI Consulting Engineers Inc.



No.	REVISIONS	DATE
1	ISSUED FOR 50% PROGRESS	2024.01.14
2	ISSUED FOR 75% REVIEW	2025.01.31
3	ISSUED FOR PERMIT/TENDER	2025.03.05
4	ISSUED FOR ADDENDUM 01	2025.03.20
5	ISSUED FOR ADDENDUM 02	2025.03.24
6	ISSUED FOR ADDENDUM 03	2025.04.01
7	ISSUED FOR CONSTRUCTION	2025.05.14



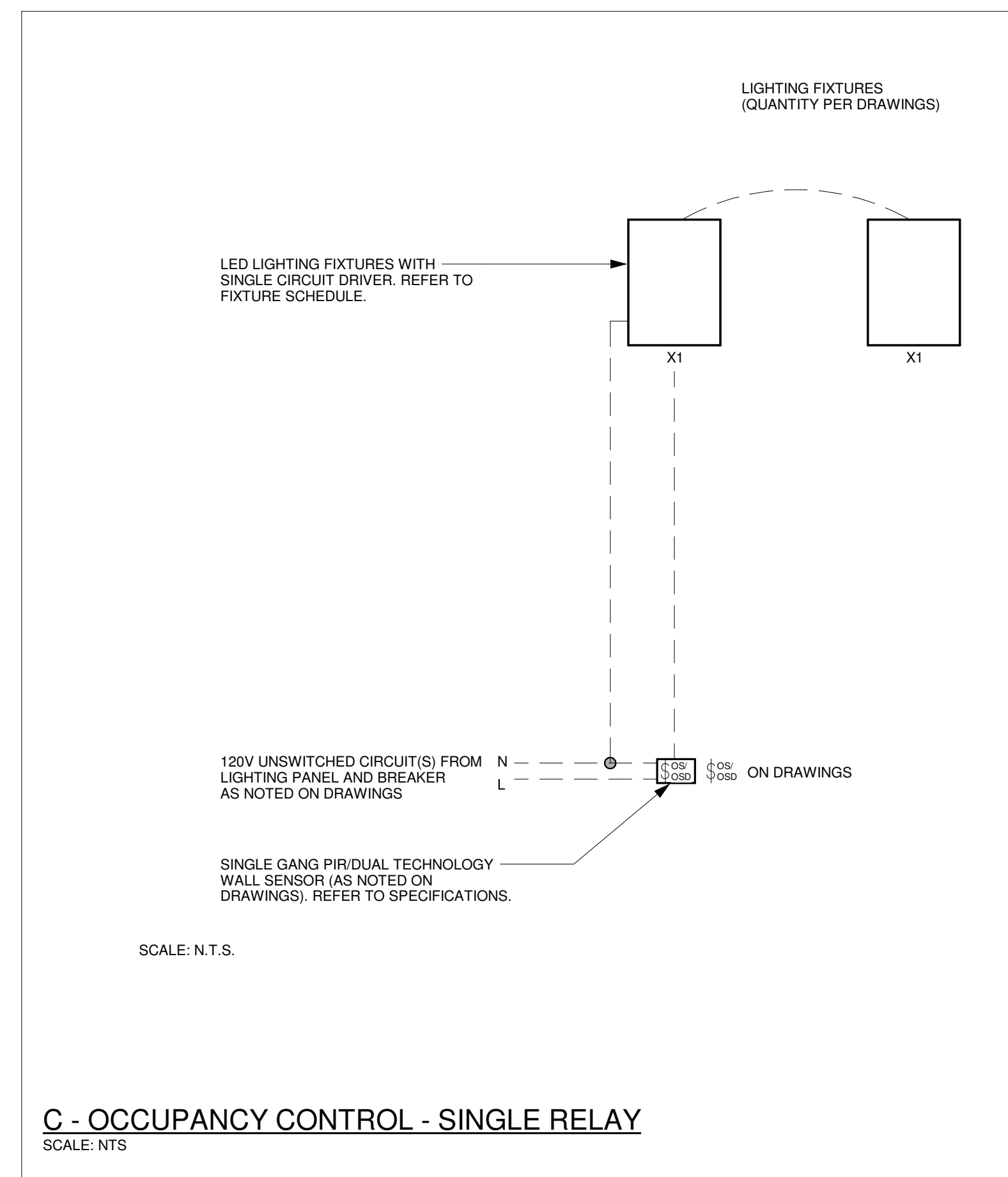
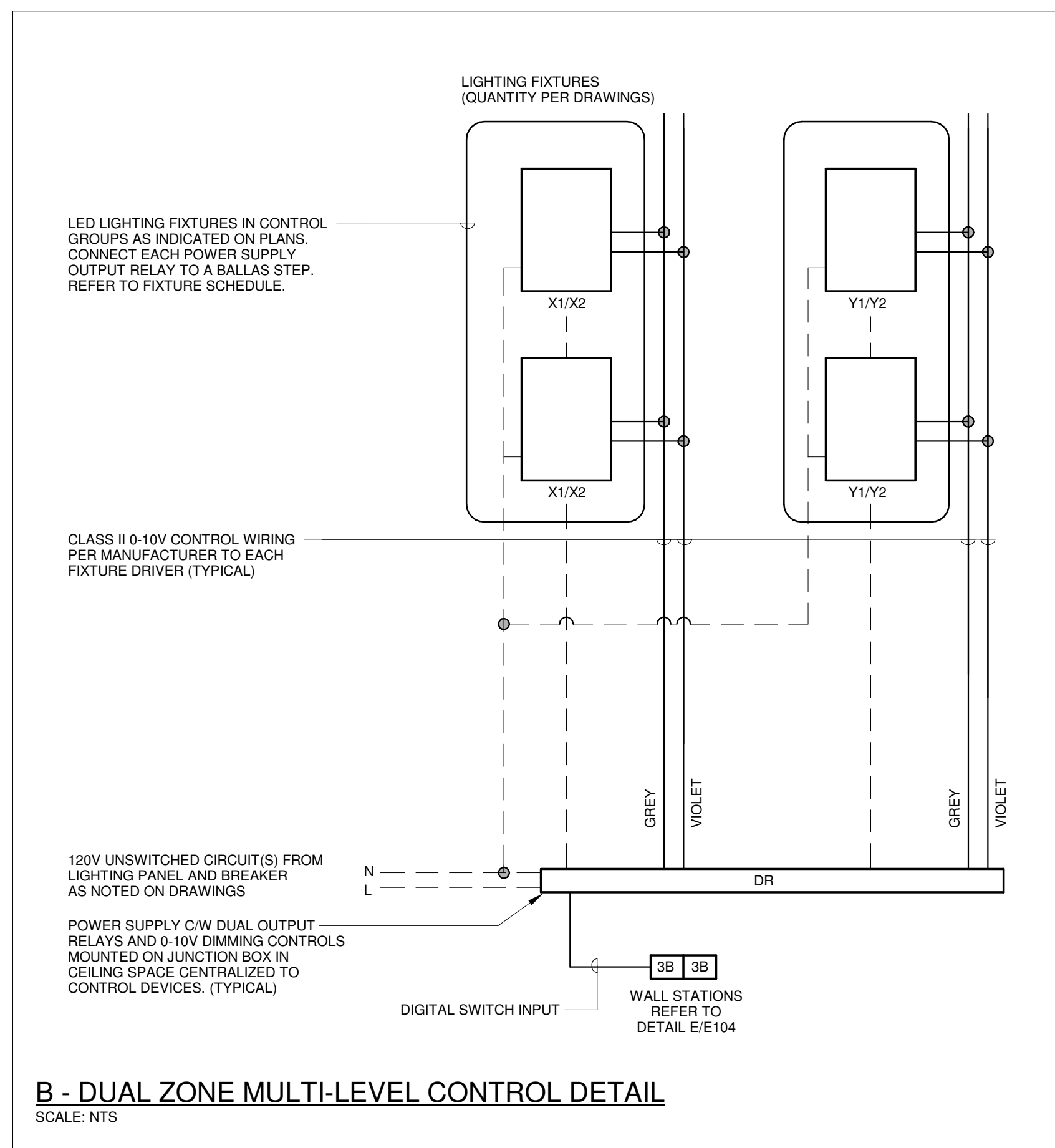
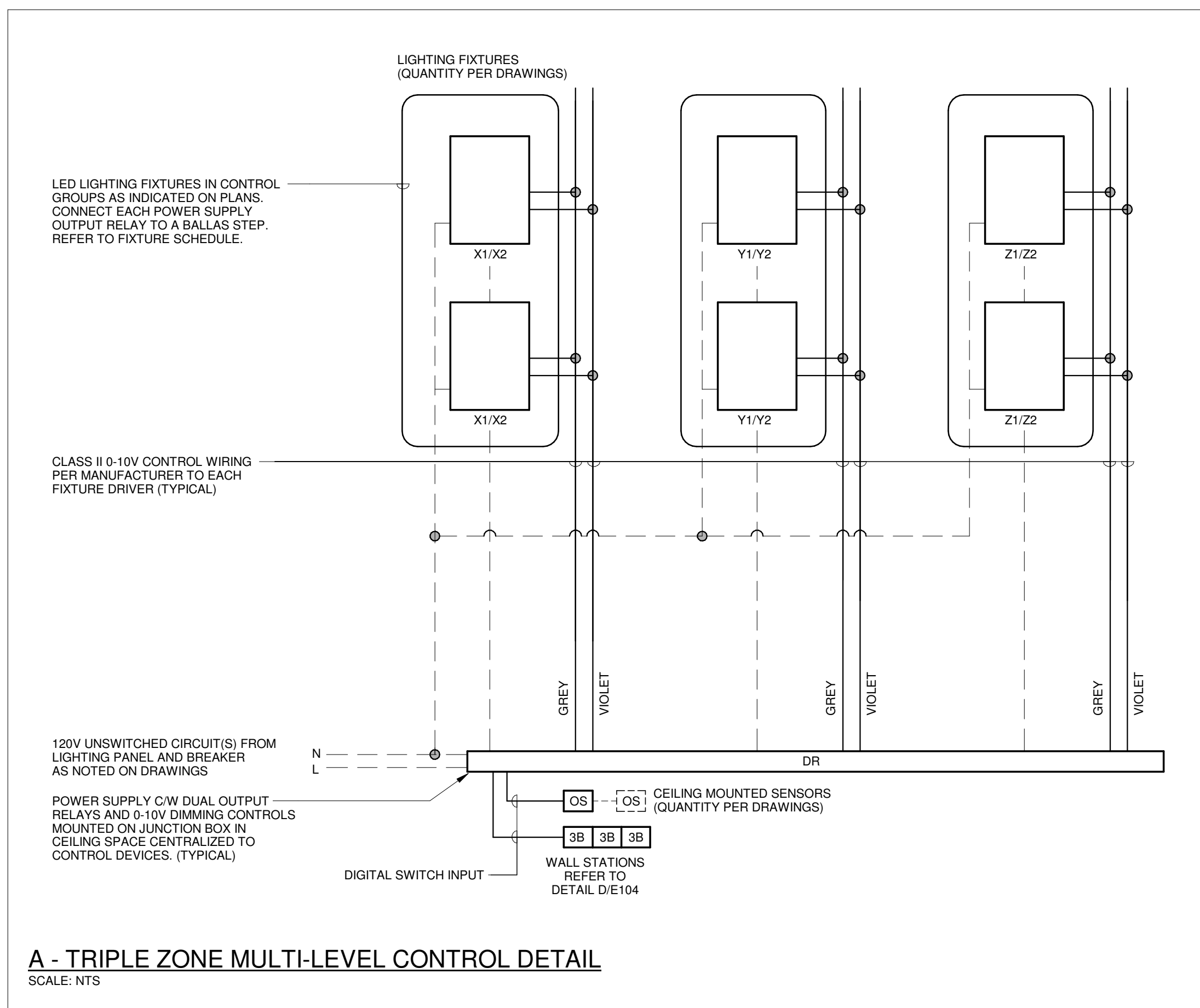
CHRONOLOGY	DATE



PROJECT NAME
**GLENVIEW PARK
SECONDARY SCHOOL
HVAC IMPROVEMENTS**
55 McKay St., Cambridge, ON, N1R 4G8

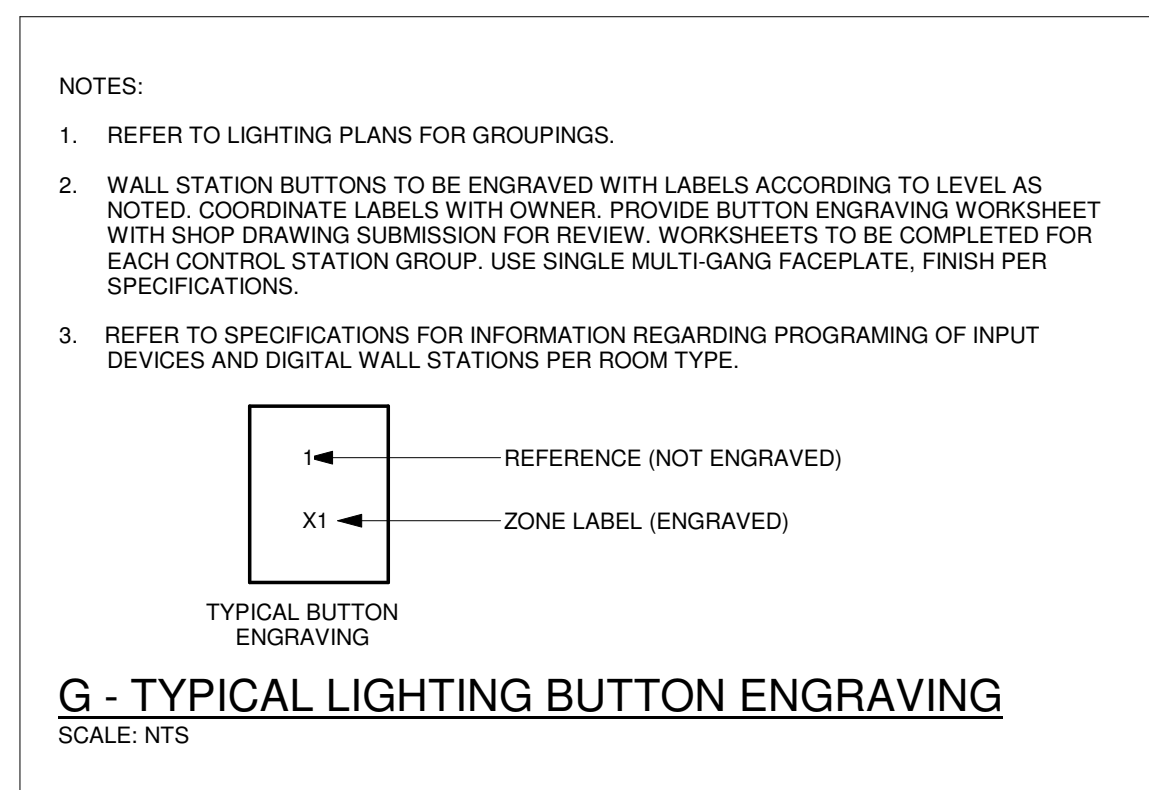
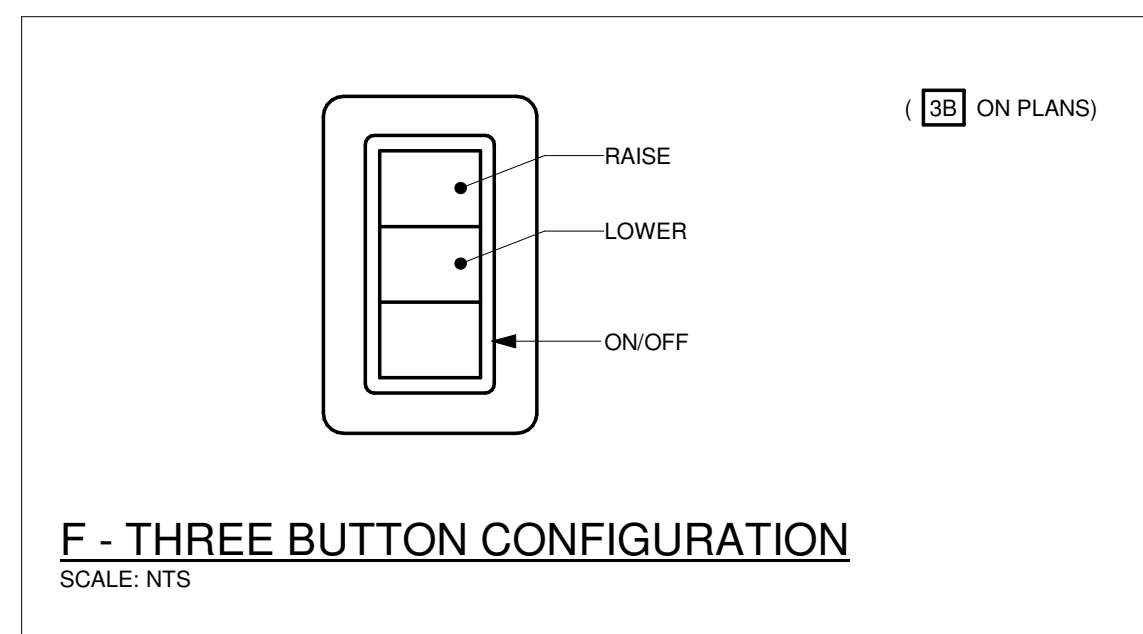
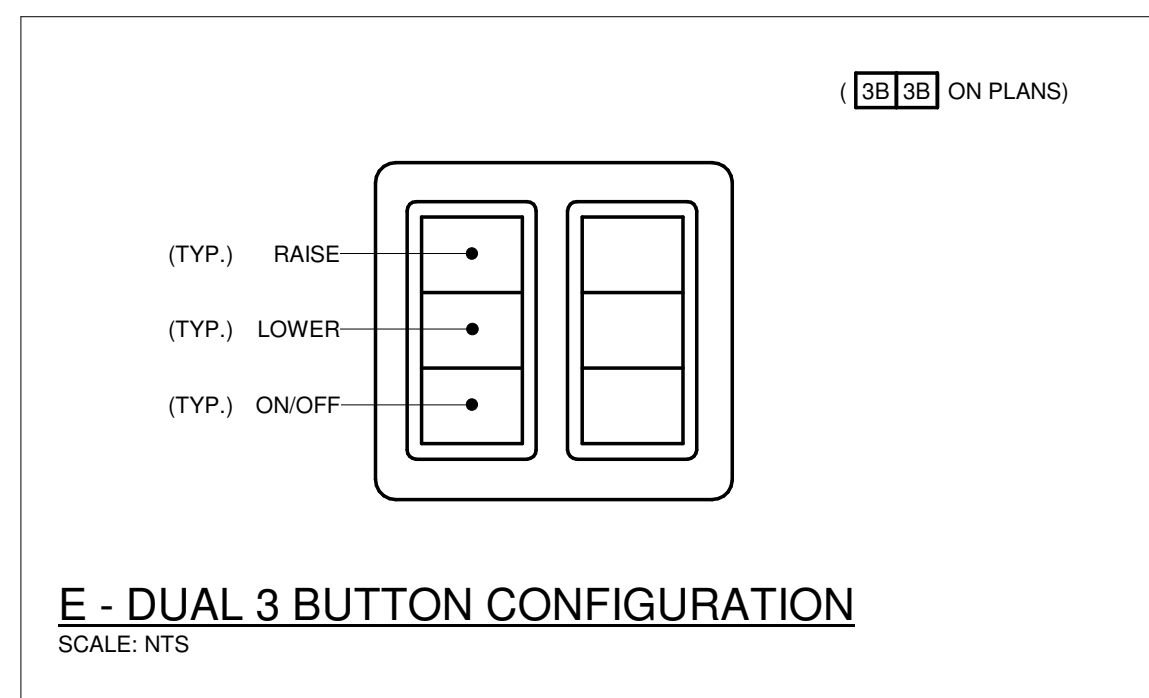
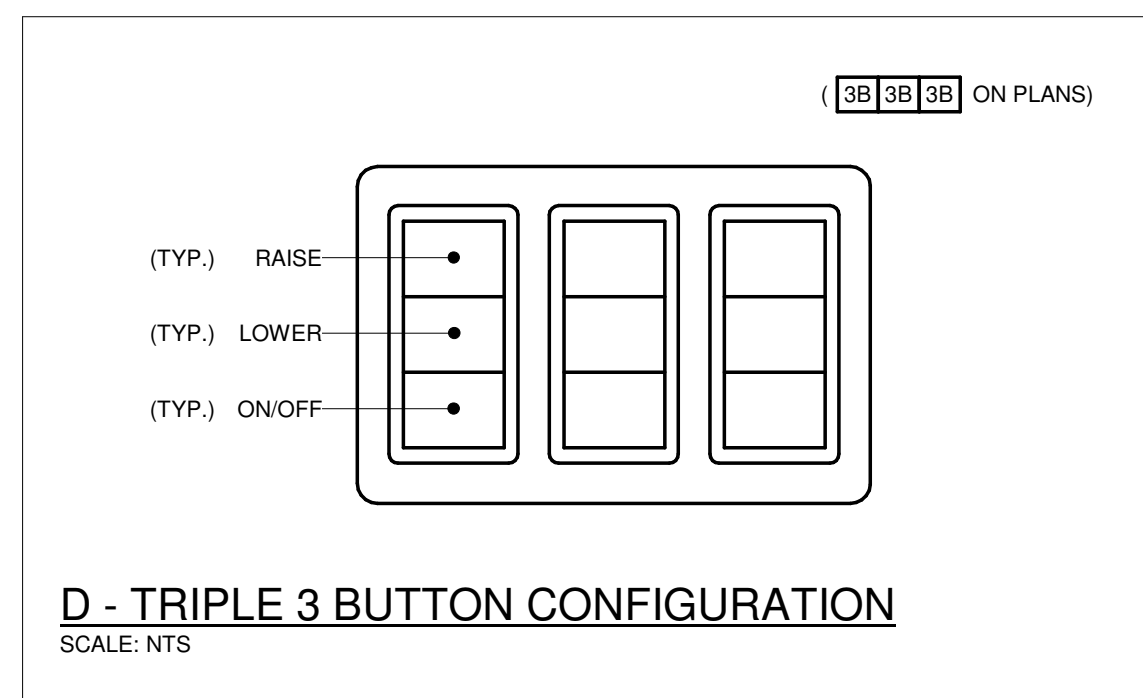
DRAWING TITLE
**EQUIPMENT WIRING
SCHEDULE**

SCALE As Indicated	DRAWING NUMBER E103
SHEET SIZE 24X36	
PROJECT NUMBER 24162	



LIGHTING CONTROL SYSTEMS SEQUENCE OF OPERATIONS			
SPACE TYPE	ROOM NAMES	CONTROL SEQUENCE/CONTROL DEVICES	CONTROL SYSTEMS
Klin	TYPICAL	Sequence: ON: Lights turned on via wall sensor switch. OFF: 5 minutes after the room has been vacated, the lights will automatically turn off.	LINE VOLTAGE OCCUPANCY CONTROL SYSTEM
Classrooms/ Preparation Rooms/ Storage	TYPICAL	Sequence: ON: Lights in all groups turned on occupancy sensor. ADJUST: The occupant manually adjusts lighting rows within the room to desired level or preset via dimmer stations. OFF: 10 minutes after the room has been vacated, the lights will automatically turn off. OVERRIDE: 3-day dimmer station located on other side of classroom entrance door shall adjust all lighting rows within room to desired level.	DIGITAL ROOM CONTROLLER
Dark Room	TYPICAL	Sequence: MANUAL ON: Lights in all groups turned on via dimmer wall station(s). MANUAL OFF: Lights in all groups turned off via dimmer wall station(s). ADJUST: The occupant manually adjusts lighting rows within the room to desired level or preset via dimmer station.	DIGITAL ROOM CONTROLLER

SYSTEM DESCRIPTIONS:	
<u>DIGITAL ROOM CONTROL SYSTEM</u> DIGITAL ROOM CONTROL RELAY POWER PACKS C/W PLUG AND PLAY DIGITAL SENSORS AND WALL MOUNT CONTROL STATIONS. REFER TO SPECIFICATIONS SECTION 26 51 16.	<u>LINE VOLTAGE OCCUPANCY CONTROL SYSTEM</u> LINE VOLTAGE WALL SENSOR SWITCHES AND LINE VOLTAGE POWER PACKS WITH HARD WIRED SENSORS. REFER TO SPECIFICATIONS SECTION 26 27 26.



The contractor shall verify all dimensions and report all errors and discrepancies to the Consultant before commencement of the work.

The drawings show general arrangement of services. They are closely associated with building construction will permit. Obtain approval for relocation of service from Consultant before commencement of the work.

The drawings do not indicate all offsets fitting and accessories which may be required. Provide the same to meet the required dimensions.

Drawings and specifications, etc., prepared and issued by the Consultant are the property of the Consultant and must be returned at the completion of the project.

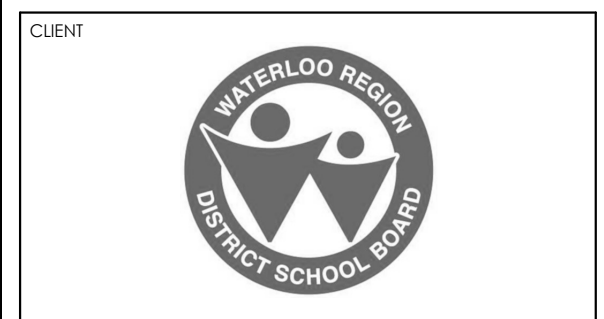
The documents are not to be duplicated or copied without the consent of the Consultant.

Do not scale this drawing.

© 2025 DEI Consulting Engineers Inc.

[illegible]

CHRONOLOGY	DATE



PROJECT NAME

GLENVIEW PARK
SECONDARY SCHOOL
HVAC IMPROVEMENTS

55 McKay St., Cambridge, ON, N1R 4G8

DRAWING TITLE

LIGHTING CONTROL
DETAILS

SCALE	DRAWING NUMBER
As Indicated	
SHEET SIZE	
24X36	E104
PROJECT NUMBER	
24162	

LIGHT FIXTURE SCHEDULE

ITEM	MANUFACTURER/CATALOG NUMBER	VOLTAGE	LAMP	MOUNTING	CRI	LISTINGS	DESCRIPTION
A	METALUX CAT. #24CZS2C3-UNV LITHONIA CAT. #STAKS 2X4 AL06 SSW7 UNVOLT SIGNIFY CAT. #2DSRT4060LC5-4-UNV-DIM	120V	LED 4000 LUMENS 4000K 46W	RECESSED	80	N/A	2'X4' (610mmX1220mm) SELECTABLE LUMEN TROFFER LED FIXTURE C/W RIBBED FROSTED ACRYLIC LENS AND 0-10V DIMMING DRIVER SUITABLE FOR T-BAR CEILING NOTE: SET FIXTURE TO NOMINAL LUMENS AS INDICATED ON FIXTURE SCHEDULE.
A1	METALUX CAT. #24FPSL25C3T3 LITHONIA CAT. #CPX 2X4 AL08 80CRI SSW7 SWL MVOLT SIGNIFY CAT. #2SBP3550L8CS-4-UNV-DIM	120V	LED 4000 LUMENS 4000K 24.7W	RECESSED	80	N/A	2'X4' (610mmX1220mm) RECESSED SELECTABLE LUMEN FLAT PANEL LED FIXTURE C/W RIBBED FROSTED ACRYLIC LENS AND 0-10V DIMMING DRIVER SUITABLE FOR T-BAR CEILING. NOTE: SET FIXTURE TO NOMINAL LUMENS AS INDICATED ON FIXTURE SCHEDULE.
B	METALUX CAT. #14CZS2C3-UNV LITHONIA CAT. #STAKS 1X4 AL06 SSW7 SIGNIFY CAT. #1DSRT3050LC5-4-UNV-DIM	120V	LED 4000 LUMENS 4000K 30W	RECESSED	80	N/A	1'X4' (305mmX1220mm) RECESSED SELECTABLE LUMEN TROFFER LED FIXTURE C/W RIBBED FROSTED ACRYLIC LENS AND 0-10V DIMMING DRIVER SUITABLE FOR T-BAR CEILING NOTE: SET FIXTURE TO NOMINAL LUMENS AS INDICATED ON FIXTURE SCHEDULE.
C	COOPER CAT. #HC6-25-D010-HM6-20-840-61-WD-C-WF LITHONIA CAT. #LDN6-40-25-L06-AR-LS-120 LITELINE CAT. #GEN06-IL-40-L-SW-S-N-X-N-1	120V	LED 2500 LUMENS 4000K 20W	RECESSED	80	N/A	6" (150mm) RECESSED LED POTLIGHT C/W, 0-10V DIMMING DRIVER, SEMI-SPECULAR CLEAR REFLECTOR AND WHITE PAINTED FLANGE
M1	METALUX CAT. #4SNLED-LD5-44SL-LW-UNV-L840-CD-1-U- WG-SNF-4F LITHONIA CAT. #ZL1D L48 5000LM FST MVOLT 40K 80CRI WH-WGZ48 VISOR CAT. #L0CMN48-LED840K044UNV-P77 C/W W5	120V	LED 4400 LUMENS 4000K 36W	SURFACE	80	N/A	4' (1220mm) LENSED LED STRIP FIXTURE C/W WHITE FINISH, 10% 0-10V DIMMING DRIVER AND WIRE GUARD
M1S	METALUX CAT. #4SLSTPSLC-UNV-AYC-CHAIN/SET LITHONIA CAT. #CSS-L48-AL03-MVOLT-SWW3-80CRI- HC-36-M12 VISOR CAT. #L0CMN48-LED83550K-S-026/037/046S-UN3 C/W KIT00001	120V	LED 4000 LUMENS 4000K 30W	SUSPENDED	80	N/A	4' (1220mm) LENSED SELECTABLE LUMEN LED STRIP FIXTURE C/W WHITE FINISH, 10% 0-10V DIMMING DRIVER AND CHAIN HANGING SET. NOTE: SET FIXTURE TO NOMINAL LUMENS AS INDICATED ON FIXTURE SCHEDULE.
EMERG. BATTERY UNIT C/W INTEGRAL HEADS (T-BAR)	AIMLITE CAT. #EBWL-EM-WHT-TB-2-ATD-VDR C/W KIT-BKT497 STANPRO CAT. #SWL-EM-WH-TB-W-AT-TP C/W KIT-BKT497 LUMACELL CAT. #BLB-EM-W C/W KIT-SR-L	120V	14W LED	RECESSED	N/A	N/A	LONG LIFE, SEALED RECHARGEABLE VANDAL RESISTANT BATTERY C/W ADJUSTABLE 14W LED MODULES, POLYCARBONATE BODY, 90 MINUTE BATTERY DURATION, RECESSED IN T-BAR CEILING AS SHOWN ON PLANS, AND AUTOTEST FEATURE.
EMERG. BATTERY	AIMLITE #EBST12 SERIES: EM-1 CAT. #EBST12036-2SM4WLRWHT-ATD LUMACELL CAT. #RG12S SERIES STANPRO CAT. #SLA-12 SERIES	12V	LED 2-4W MF16	SURFACE	N/A	N/A	LONG LIFE, SEALED RECHARGEABLE BATTERY PROVIDING MINIMUM EMERGENCY WATTAGE AS NOTED BY THE CATALOGUE NUMBER C/W MICRO SIZE 12V 4W (MINIMUM) LED HEADS AND AUTOTEST FEATURE. UNIT SHALL BE LISTED FOR CAPACITY OF 90 MINUTES MINIMUM.
EXIT LIGHTS (SELF POWERED)	AIMLITE CAT. #RPALW-U-M-WHT-BAT-ATD STANPRO CAT. #RMXL0WH-IB-AT LUMACELL CAT. #LA-3-W-S	12V	LED 2.5 WATT	SURFACE	N/A	N/A	LED SELF POWERED EXTRUDED ALUMINUM PICTOGRAM FIXTURE C/W GREEN FACE AND WHITE BEZEL, UNIVERSAL MOUNTING TO SUIT WALL, END OF CEILING, AND MAXIMUM 2.5" (63mm) THICKNESS, FACES AND CHEVRONS TO SUIT DRAWINGS. 12V INTERNAL SEALED RECHARGEABLE BATTERY PROVIDING MINIMUM 90 MINUTES OF EMERGENCY POWER, AND AUTOTEST FEATURE.

NOTES:

- ① LED LUMEN VALUES QUOTED FOR FIXTURES ARE TO BE CONSIDERED MINIMUM, AND AS ABSOLUTE OF DELIVERED LUMENS. LUMEN VALUES SHOULD NOT EXCEED MORE THAN 10% OF SPECIFIED OUTPUT.
- ② WHERE NOTED THAT FIXTURES ARE TO HAVE FINISH TO SUIT ARCHITECT THE FINISH WILL BE SELECTED FROM MANUFACTURER'S ORIGINAL COLOUR CHART (i.e. RAL COLOURS OR EQUAL). PROVIDE THIS COLOUR CHART WITH SHOP DRAWING SUBMITTAL.

IF THERE ARE ANY DISCREPANCIES BETWEEN THE FIXTURE PART NUMBER AND DESCRIPTION, IT IS THE RESPONSIBILITY OF THIS CONTRACTOR TO BRING THESE TO THE ELECTRICAL CONSULTANT'S ATTENTION PRIOR TO TENDER CLOSE. NO EXTRAS WILL BE ENTERTAINED FOR FAILURE TO DO SO. FINAL FIXTURE CHARACTERISTICS AND DESCRIPTION WILL BE MARKED BY CONSULTANT AT TIME OF SHOP DRAWING REVIEW.

The contractor shall verify all dimensions and report all errors and discrepancies to the Consultant before commencement of the work.

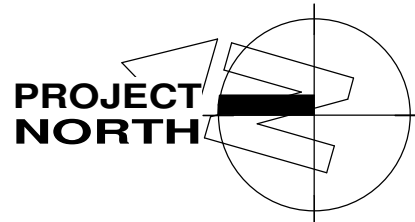
The drawings show general arrangement of services. Follow as closely as actual building construction will permit. Obtain approval for relocation of service from Consultant before commencement of the work.

The drawings do not indicate all offsets fitting and accessories which may be required. Provide the same to meet the required conditions.

Drawings and specifications are prepared and issued by the Consultant are the property of the Consultant and must be returned at the completion of the project. These documents are not to be duplicated or copied without the consent of the Consultant.

Do not scale this drawing.

© 2025 DEI Consulting Engineers Inc.

[illegible]

CHRONOLOGY	DATE



CUEN



PROJECT NAME

GLENVIEW PARK SECONDARY SCHOOL HVAC IMPROVEMENTS

55 McKay St., Cambridge, ON, N1R 4G8

DRAWING TITLE

LIGHT FIXTURE SCHEDULE

SCALE As Indicated	DRAWING NUMBER E105
SHEET SIZE 24X36	
PROJECT NUMBER 24162	

-	"E" INDICATES EXISTING ITEM TO REMAIN.
-	EXISTING ELECTRICAL EQUIPMENT NOT SHOWN SHALL REMAIN UNLESS NOTED OTHERWISE.
-	"R" INDICATES EXISTING ITEM TO BE RELOCATED. REFER TO RENOVATION DRAWINGS AND RELOCATE DEVICE AND WIRING TO SUIT. UNLESS OTHERWISE NOTED.
-	"D" INDICATES EXISTING ITEM TO BE DEMOLISHED. UNLESS OTHERWISE NOTED DISCONNECT AND REMOVE NOTED DEVICE AND WIRING BACK TO SOURCE.
-	ALL LIGHTING FIXTURES BEING RELOCATED SHALL BE CLEANED AND CHECKED PRIOR TO BEING REINSTALLED.

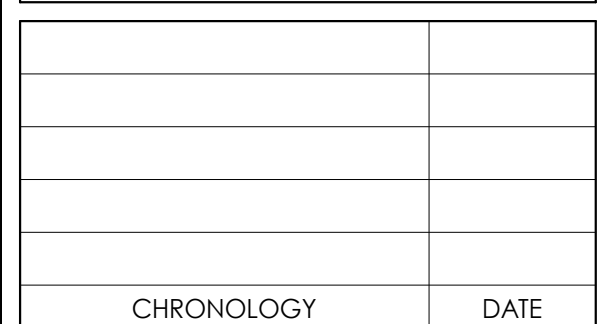
EXISTING FIXTURES WITHIN AREA SHOWN SHALL BE DISCONNECTED AND REMOVED COMPLETE. MAINTAIN, REWORK AND EXTEND EXISTING CIRCUIT AS REQUIRED TO ACCOMMODATE NEW FIXTURES. REFER TO RENOVATION DRAWINGS FOR A COMPLETE WORKING SYSTEM.

EXISTING CEILINGS WITHIN AREA SHOWN ARE BEING REMOVED TO FACILITATE INSTALLATION OF NEW CEILINGS AND NEW LIGHTING FIXTURES. ELECTRICAL WORK SHALL BE REWORKED TO ACCOMMODATE BASE BID PRICE TO REMOVE AND REINSTALL ALL EXISTING CEILING MOUNTED DEVICES AS SHOWN TO ACCOMMODATE NEW LIGHTING FIXTURES. REWORK/EXTEND EXISTING WIRING AS REQUIRED TO SUIT NEW LOCATION OF EXISTING DEVICES AS SHOWN ON RENOVATION PLANS.

MAINTAIN EXISTING BACKBOXES AND CONDUIT FOR NEW ELECTRICAL STUFFING. REFER TO RENOVATION PLANS FOR FURTHER DETAILS AND REQUIREMENTS.



**PROJECT
NORTH**

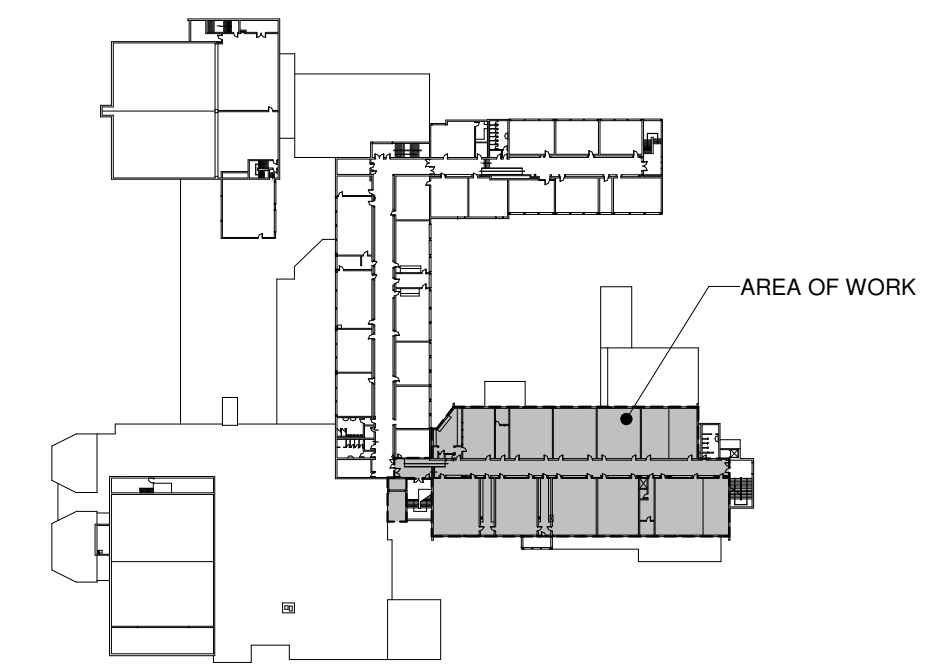
[illegible]

GLENVIEW PARK SECONDARY SCHOOL HVAC IMPROVEMENTS

55 McKay St., Cambridge, ON, N1R 4G8

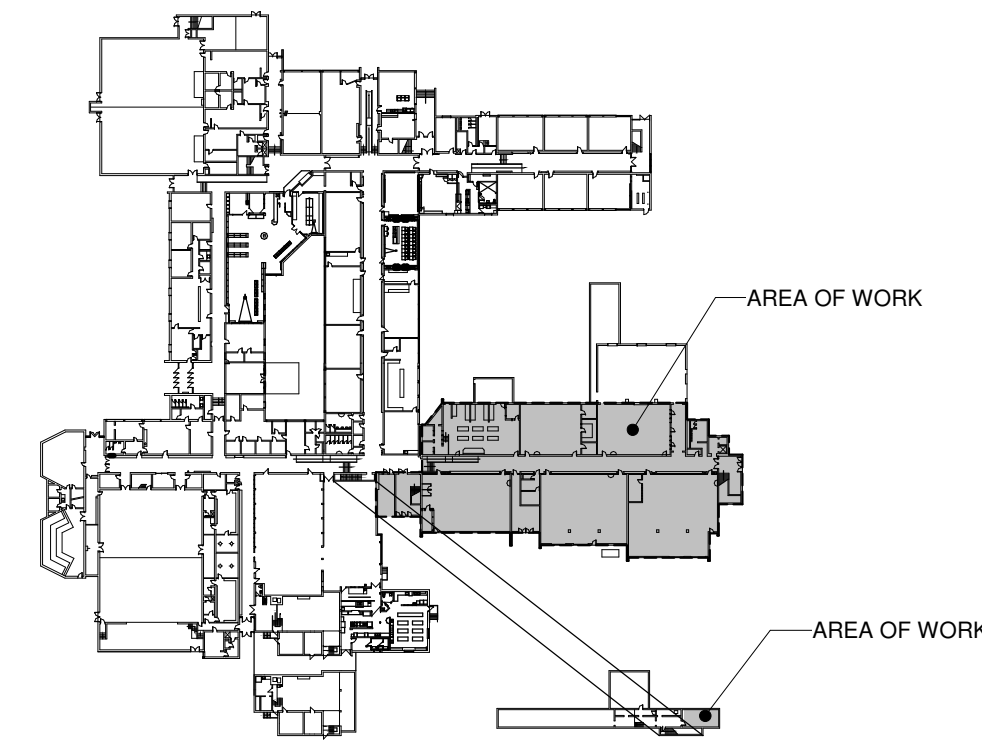
LEVEL 2 - SCIENCE
WING - ELECTRICAL
DEMOLITION PLAN

E201



SCALE: NTS

SCALE: 1 : 100



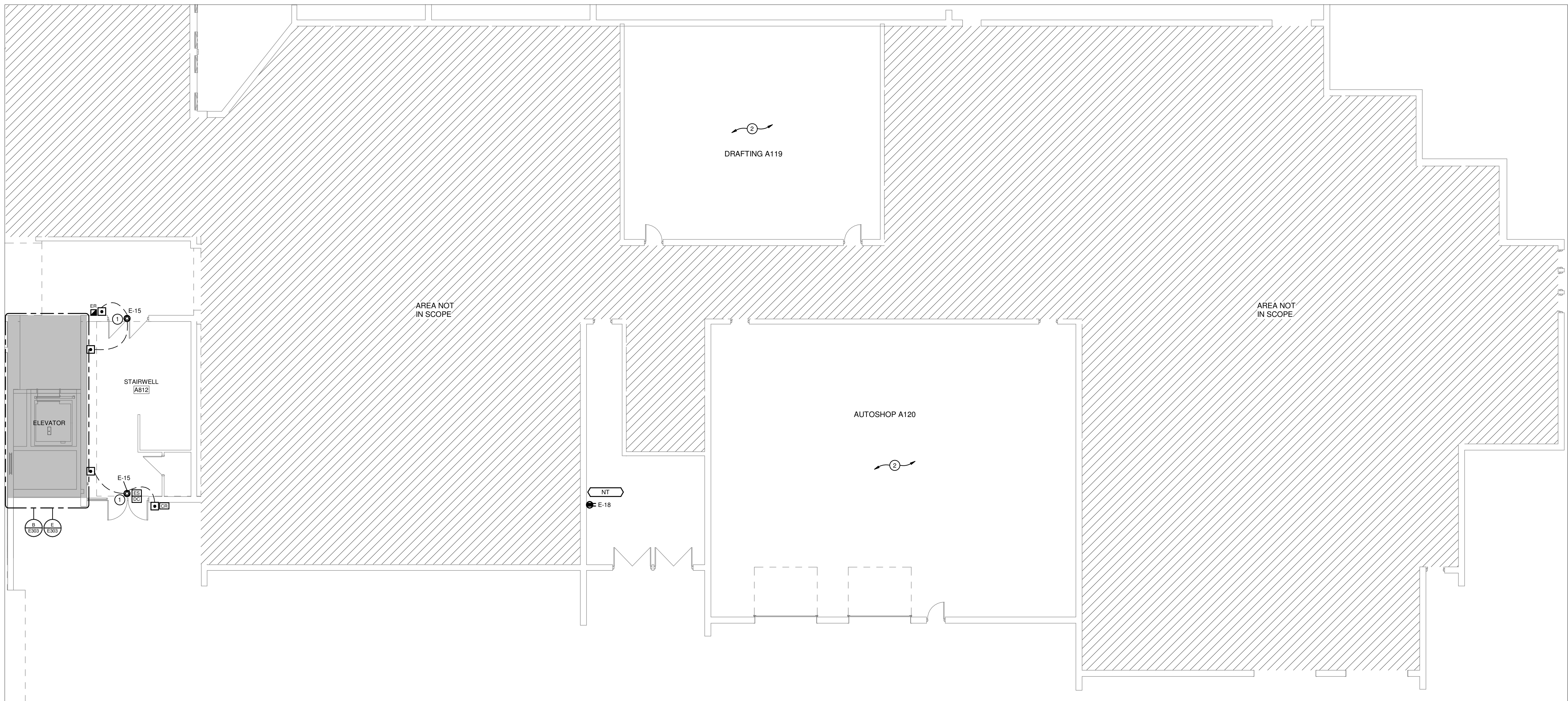
KEYPLAN - LEVEL 1 & BASEMENT
SCALE: NTS

- ## GENERAL NOTES - RENOVATION
- 'ER' INDICATES EXISTING ITEM TO REMAIN.
 - 'R' INDICATES EXISTING ITEM IN RELOCATED POSITION.
 - ALL DEVICES SHOWN ARE NEW UNLESS OTHERWISE NOTED.
 - EXISTING ELECTRICAL EQUIPMENT NOT SHOWN SHALL REMAIN UNLESS OTHERWISE NOTED.
 - MAINTAIN SERVICE TO ALL EXISTING DEVICES TO REMAIN.
 - REVISE PANEL DIRECTORIES TO SUIT CHANGES (TYPED).

SPECIFIC NOTES

- | | |
|---|--|
| 1 | <p>PROVIDE 120V 15A HARDWIRE CONNECTION FOR POWER DOOR OPERATOR C/W LOW VOLTAGE WIRING (4#18AWG IN 13mmC) TO HANDICAP PUSH-BUTTONS. COORDINATE EXACT REQUIREMENTS AND LOCATION WITH ARCHITECTURAL DESIGNER AND DOOR HARDWARE SUPPLIER PRIOR TO TOUGHING.</p> |
| 2 | <p>CONTRACTOR SHALL REMOVE ANY EXISTING CEILING TILES/EQUIPMENT INSTALLED IN CEILING SPACE ABOVE TO ACCOMMODATE DISTRIBUTION RENOVATION WORK TAKING PLACE ON 2ND FLOOR. REPLACE ANY BROKEN TILES/EQUIPMENT WITH NEW AS REQUIRED.</p> |

BASEMENT - ELECTRICAL RENOVATION PLAN



LEVEL 1 - SCIENCE WING - ELECTRICAL RENOVATION PLAN
SCALE: 1 : 100

The Contractor shall verify all dimensions and report all errors and discrepancies to the Consultant before commencement of the work.

The drawings show general arrangement of services. Follow as closely as actual building construction will permit. Obtain approval for relocation of service from Consultant before commencement of the work.

The drawings do not indicate all offsets fitting and accessories which may be required. Provide the same to meet the required conditions.

Drawings and specifications are prepared and issued by the Consultant are the property of the Consultant and must be returned at the completion of the project. These documents are not to be duplicated or copied without the consent of the Consultant.

Do not scale this drawing.

© 2025 DEI Consulting Engineers Inc.

[illegible][illegible]

PROJECT NAME

GLENVIEW PARK
SECONDARY SCHOOL
HVAC IMPROVEMENTS

55 McKay St., Cambridge, ON, N1R 4G8

DRAWING TITLE

LEVEL 1 - SCIENCE
WING - ELECTRICAL
RENOVATION PLAN

SCALE	DRAWING NUMBER
As Indicated	
SHEET SIZE	
24X36	E202
PROJECT NUMBER	
24162	

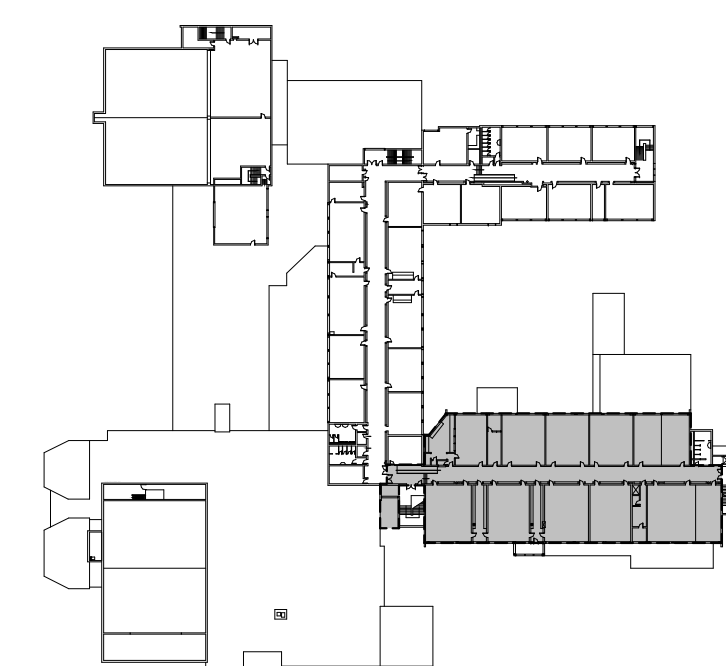
PROVIDE P-TOUCH LABELS INDICATING PANEL AND CIRCUIT LABEL ON ALL LIGHT SWITCH, LIGHTING CONTROL STATION, AND RECEPTACLE DEVICE FACEPLATES. INCLUDE SWITCH LEG INDICATION FOR LIGHTING CONTROLS AND SWITCHES.

REFER TO SPECIFICATIONS FOR FURTHER DETAILS AND REQUIREMENTS.

-	'ER' INDICATES EXISTING ITEM TO REMAIN.
-	'R' INDICATES EXISTING ITEM IN RELOCATED POSITION.
-	ALL DEVICES SHOWN ARE NEW UNLESS OTHERWISE NOTED.
-	EXISTING ELECTRICAL EQUIPMENT NOT SHOWN SHALL REMAIN UNLESS OTHERWISE NOTED.
-	MAINTAIN SERVICE TO ALL EXISTING DEVICES TO REMAIN.
-	REVISE PANEL DIRECTORIES TO SUIT CHANGES (TYPED).

1 UTILIZE EXISTING LOCAL LIGHTING CIRCUIT MADE AVAILABLE FROM DEMOLITION FOR AREA NOTED AND
2 CONNECT TO NEW LIGHT FIXTURE(S) AND CONTROLS AS SHOWN FOR A COMPLETE WORKING SYSTEM.
3 INDICATES EXISTING FIRE ALARM DEVICE IN RELOCATED POSITION. REWORK AND EXTEND EXISTING CONDUIT
4 TO WIRING AS REQUIRED TO SUIT REVISED LOCATION. EXISTING DEVICE SHALL BE RE-VERIFIED IN
5 CONFORMANCE WITH CANULC 5537 "VERIFICATION OF FIRE ALARM SYSTEMS" TO ENSURE SATISFACTORY
6 OPERATION.
7 ALL EXISTING DEVICES ON CEILINGS WHEN AREA SHOWN SHALL BE REINSTALLED TO ACCOMMODATE NEW
8 CEILING LIGHTS AND FIXTURES. REWORK/EXTEND EXISTING WIRING MADE AVAILABLE DURING REMOVAL AS REQUIRED
9 TO SUIT.
10 INDICATES DIGITAL ROOM CONTROLLER TO BE INSTALLED IN ACCESSIBLE CEILING SPACE FOR CONTROL OF
11 NOTED OCCUPANCY SENSORS. REFER TO LIGHTING CONTROL DETAILS.
12 UTILIZE EXISTING BACKBOXES MADE AVAILABLE FROM DEMOLITION AND PROVIDE DIMMING WALL STATION(S) AS
13 SHOWN FOR CONTROL OF LIGHTING GROUPS AS INDICATED. PROVIDE BLANK COVERPLATE FOR INACTIVE
14 REDUNDANT SWITCHES.
15 INDICATES DIGITAL ROOM CONTROLLER TO BE INSTALLED IN ACCESSIBLE CEILING SPACE FOR CONTROL OF
16 LIGHTING FIXTURES. REFER TO LIGHTING CONTROL DETAILS.
17 PROVIDE DIGITAL DIMMING CONTROLLER TO BE MOUNTED TO GELLS TO CONCEAL CONTROL WIRING.
18 REFER TO LIGHTING CONTROL DETAILS AND TO SPECIFICATIONS FOR FURTHER DETAILS AND REQUIREMENTS.

INDICATED DETECTOR C/W RLY BASE FOR RELEASE OF ELECTROMAGNETIC DOOR HOLDER AS SHOWN.
 8 DETECTOR DETECTOR WITH 1.5m AND CENTRE ON DOOR(S) BEING HELD OPEN. WHEN INDICATED DEVICE IS IN
 ALARM, THE ASSOCIATED ALARM IN THE DEVICE BEING IS CLOSE AND CAUSE ASSOCIATED DOOR HOLDS
 RELEASE THROUGH FIRE ALARM PANEL WHEN ALARMED. THE ASSOCIATED RELEASE DOOR HOLDS
 THE FIRE ALARM PANEL ON GENERAL ALARM SHALL CASE DOOR HOLDS TO RELEASE.
 INDICATES MAGNETIC HOLD OPEN DEVICE PROVIDED AS PART OF THIS SCOPE OF WORK WHICH SHALL BE
 10 RELEASED UPON SIGNAL FROM FIRE ALARM SYSTEM. REFER TO DETAIL H-104. FIRE ALARM RISER DIAGRAM
 FOR SPECIFICATIONS TO BE COORDINATED WITH ARCHITECT AND ELECTRICAL ENGINEER. COORDINATE EXACT LOCATION TO
 INSTALL MAGNETIC HOLD OPEN DEVICE WITH ARCHITECT AND DOOR SWING.
 PROVIDE 120V 15A HARDWIRED CONNECTION C/W JUNCTION BOX AND STEP DOWN TRANSFORMER (120V/24V)
 10 ABOVE ACCESSIBLE CEILING SPACE AND LOW VOLTAGE WIRING TO MAGNETIC DOOR HOLD OPEN DEVICES.
 REFER TO DETAIL E-102 AND TO SPECIFICATIONS FOR FURTHER DETAILS AND REQUIREMENTS.
 PROVIDE NEW EMERGENCY BATTERY UNIT SHOWN AND CONNECT TO UNSWITCHED SIDE OF EXISTING LOCAL
 11 LIGHTING CIRCUIT.
 REWORK AND EXTEND EXISTING LOCAL EXIT SIGNAGE CIRCUIT AND CONNECT TO NEW EXIT SIGN INDICATED.
 12 CONNECT NEW FIRE ALARM DEVICE INDICATED TO EXISTING LOCAL INITIATING CIRCUIT. RE-VIFY PORTIONS
 OF ALARM SYSTEM TO CANULC-5537. REFER TO SPECIFICATIONS FOR FURTHER DETAILS AND REQUIREMENTS.
 CONFIRM EXACT LOCATION OF EXISTING CEILING MOUNT RECEPTACLE BEING RELOCATED ON SITE WITH
 14 OWNER, REWORK AND EXTEND EXISTING CONDUIT AND WIRING AS REQUIRED TO SUIT.
 PROVIDE 120V POWER AND FIRE ALARM CONNECTIONS TO NEW SMOKE DETECTOR WITH INTEGRAL SMOKE
 15 DETECTOR. REFER TO FIRE ALARM SPECIFICATIONS AND TO RISE/SMOKE DETECTOR PROGRAM FOR FURTHER DETAILS.
 COORDINATE EXACT LOCATION WITH MECHANICAL CONTRACTOR PRIOR TO ROUGH-IN.



SCALE: NT

The Contractor shall verify all dimensions and report all errors and discrepancies to the Consultant before commencement of the work.

The drawings show general arrangement of services. Follow as closely as actual building construction will permit. Obtain approval for relocation of service from Consultant before commencement of the work.

The drawings do not indicate all offsets fitting and accessories which may be required. Provide the same to meet the required conditions.

Drawings and specifications are prepared and issued by the Consultant are the property of the Consultant and must be returned at the completion of the project. These documents are not to be duplicated or copied without the consent of the Consultant.

Do not scale this drawing.

© 2025 DEI Consulting Engineers Inc.



No.	REVISIONS	DATE
1	ISSUED FOR 50% PROGRESS	2024.01.14
2	ISSUED FOR 75% REVIEW	2025.01.31
3	ISSUED FOR PERMIT/TENDER	2025.03.05
4	ISSUED FOR ADDENDUM 01	2025.03.20
5	ISSUED FOR CONSTRUCTION	2025.05.14

[illegible]

CIENT



PROJECT NAME

GLENVIEW PARK SECONDARY SCHOOL HVAC IMPROVEMENTS

55 McKay St., Cambridge, ON, N1R 4G8

DRAFTING TITLE

LEVEL 2 - SCIENCE WING - ELECTRICAL RENOVATION PLAN

SCALE	DRAWING NUMBER E203
As Indicated	
SHEET SIZE 24X36	
PROJECT NUMBER 24162	

NEW FEEDERS TO FOLLOW SAME ROUTE AS MECHANICAL
PIPING. COORDINATE DETAILS WITH MECHANICAL TRADE

REFER TO SPECIFICATIONS FOR FURTHER DETAILS AND REQUIREMENTS.

- 'E' INDICATES EXISTING ITEM TO REMAIN.
- 'R' INDICATES EXISTING ITEM IN RELOCATED POSITION.
- ALL DEVICES SHOWN ARE NEW UNLESS OTHERWISE NOTED.
- EXISTING ELECTRICAL EQUIPMENT NOT SHOWN SHALL REMAIN UNLESS OTHERWISE NOTED.
- MAINTAIN SERVICE TO ALL EXISTING DEVICES TO REMAIN.
- REVISE PANEL DIRECTORIES TO SUIT CHANGES (TYPED).

PROVIDE T-SLOT GROUND FAULT RECEPTACLE COMPLETE WITH "EXTRA DUTY" IN-USE COVER. COORDINATE PLACEMENT WITH MECHANICAL CONTRACTOR. INDICATE LOCATION ON MOUNTING 915mm ABOVE FINISHED ROOF LEVEL. PROVIDE SUITABLE SUPPORT AT MECHANICAL EQUIPMENT (IF APPLICABLE).

INDICATES MECHANICAL PIPING TO BE HEAT TRACED BY MECHANICAL CONTRACTOR AND IS SHOWN FOR REFERENCE PURPOSES ONLY. MECHANICAL CONTRACTOR SHALL PROVIDE 208Y 1PH CIRCUIT C/W G PROTECTED BREAKER (30mA) FOR MECHANICAL PIPE HEAT TRACING. COORDINATE EXACT LOCATION TO MECHANICAL CONTRACTOR. INDICATE ALL OTHER REQUIREMENTS WITH MECHANICAL CONTRACTOR PRIOR TO CARRYING OUT SCOPE OF WORK.

The contractor shall verify all dimensions and report all errors and discrepancies to the Consultant before commencement of the work.

The drawings show general arrangement of services. Follow as closely as actual building construction will permit. Obtain approval for relocation of service from Consultant before commencement of the work.

The drawings do not indicate all offsets fitting and accessories which may be required. Provide the same to meet the required conditions.

Drawings and specifications, etc., prepared and issued by the Consultant are the property of the Consultant and must be returned at the completion of the project. These documents are not to be duplicated or copied without the consent of the Consultant.

Do not scale this drawing.

© 2025 DEI Consulting Engineers Inc.

[illegible][illegible]

CUEN



PROJECT NAME

GLENVIEW PARK SECONDARY SCHOOL HVAC IMPROVEMENTS

55 McKay St., Cambridge, ON, N1R 4G8

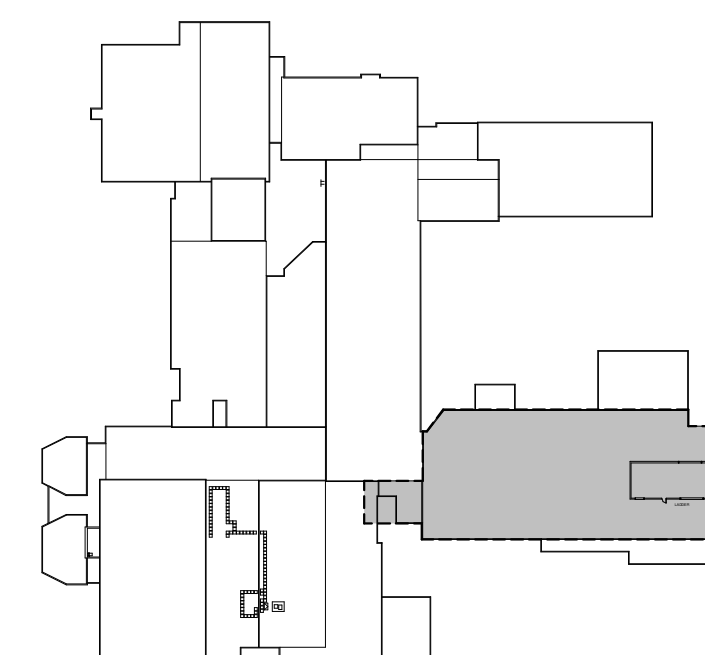
DRAWING TITLE

ROOF - SCIENCE WING - POWER & SYSTEMS RENOVATION PLAN

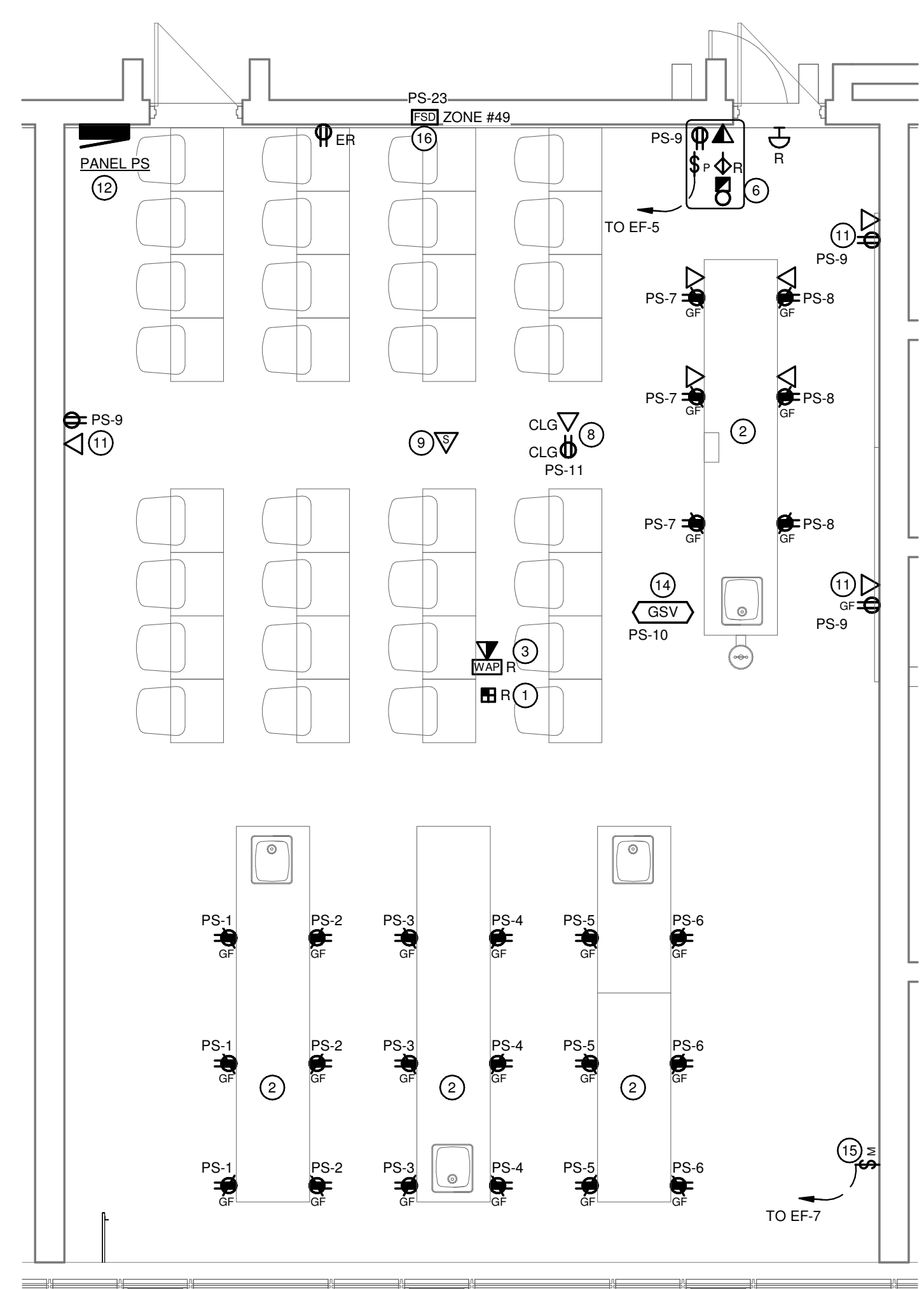
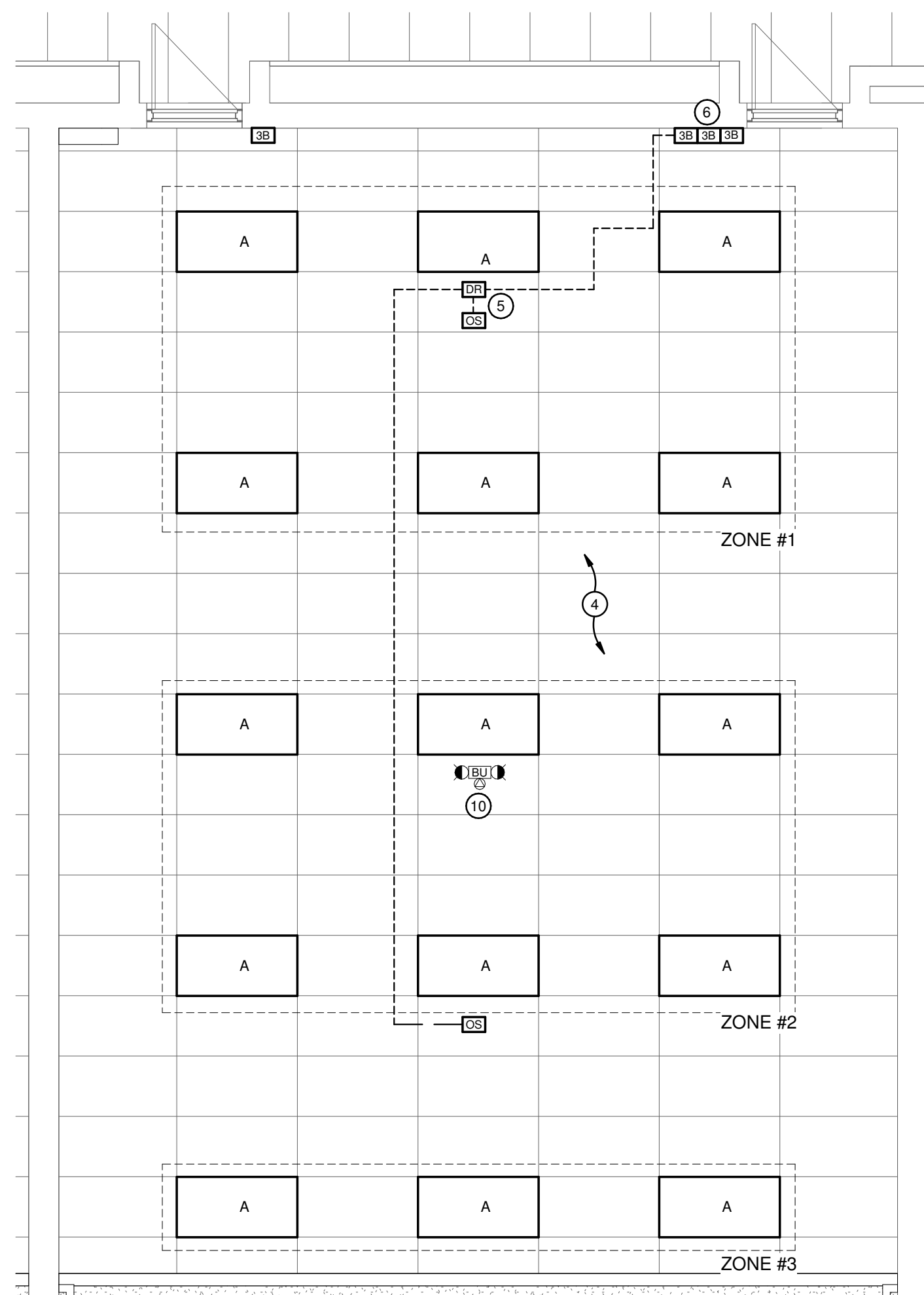
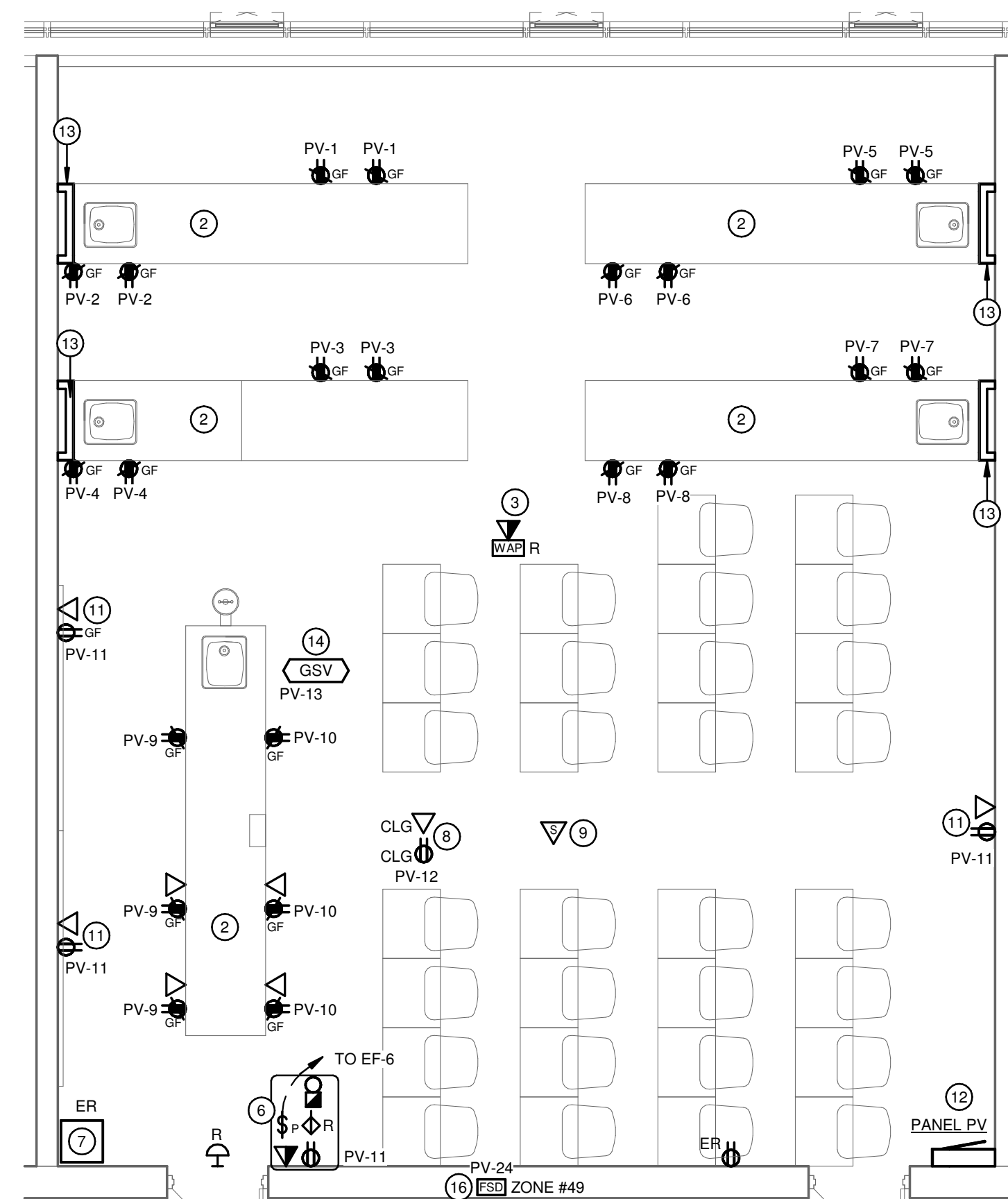
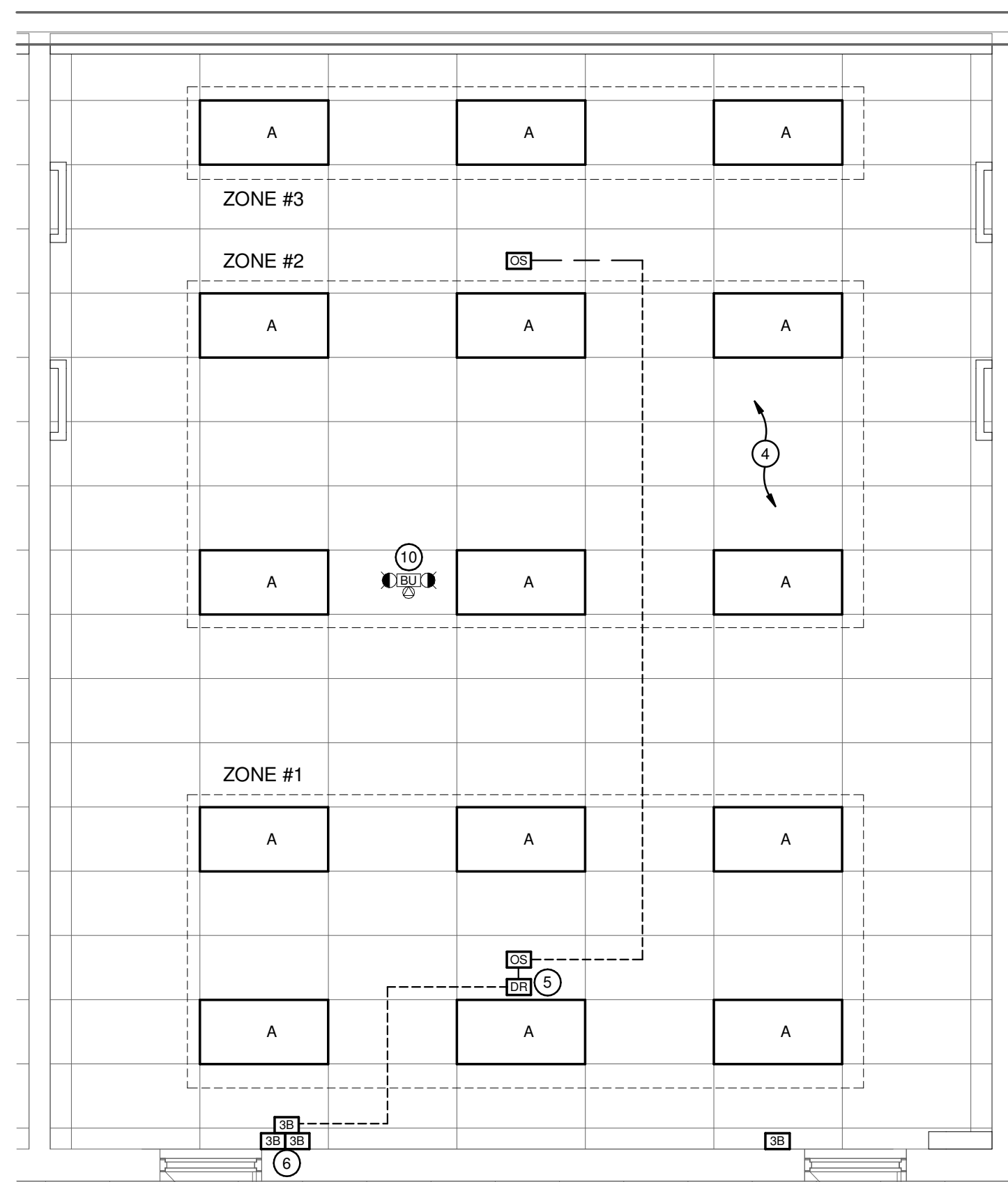
SCALE	DRAWING NUMBER
As Indicated	
SHEET SIZE	
24X36	E204
PROJECT NUMBER	
24162	



ROOF - SCIENCE WING - POWER & SYSTEMS RENOVATION PLAN
SCALE: 1 : 125



KEYPLAN - ROOF
SCALE: NTS





- INDICATES EXISTING FAN UNIT TO BE REMOVED
COMBITE BY MECHANICAL CONTRACTOR. ELECTRICAL
CONTRACTOR SHALL REMOVE EXISTING WIRING AND
WIRING BACK TO SOURCE PANEL AND MAKE SAFE. MARK
BURNED OR SPARKED AREAS.
- INDICATES DUCT TYPE SMOKE DETECTOR MOUNTED IN
STRAIGHT SECTION OF SUPPLY DUCT OF MECHANICAL
DUCT. REFER TO MECHANICAL DRAWINGS FOR
DUCT TYPE DUCT DETECTOR. FOR FURTHER DETAILS,
COORDINATE EXACT LOCATION TO INSTALL DUCT SMOKE
2 DETECTOR WITH DUCT STRUCTURE AND ACCESSORIES
FOR THE DETECTOR FOR THE DETECTOR. FOR FURTHER
DETAILS AND REQUIREMENTS WITH THE FIRE ALARM
MANUFACTURER AND MECHANICAL CONTRACTOR.
- CONNECT NEW FIRE ALARM INITIATING DEVICE TO
EXISTING LOCAL AND REMOTE FIRE ALARM PORTIONS
OF ALARM SYSTEM TO CANULC-537. REFER TO
SPECIFICATIONS FOR FURTHER DETAILS AND
REQUIREMENTS.
- INDICATES EXISTING EXHAUST FAN DISCONNECT SWITCH
TO BE REMOVED AS PART OF THIS SCOPE OF WORK.
COORDINATE EXACT LOCATION AND DETAILS WITH
MECHANICAL CONTRACTOR.

[illegible]

CHRONOLOGY	DATE



PROJECT NAME

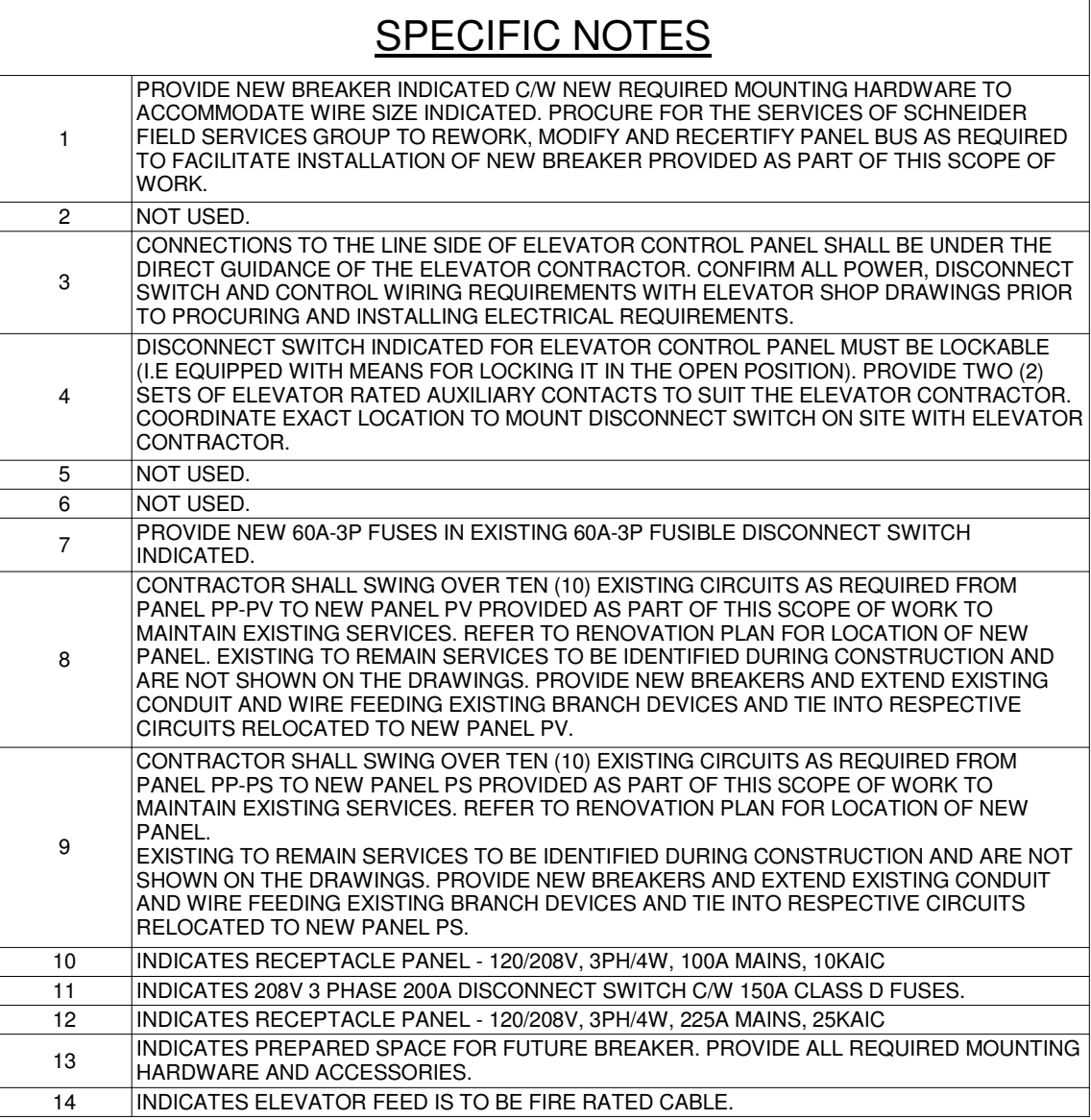
GLENVIEW PARK
SECONDARY SCHOOL
HVAC IMPROVEMENTS

55 McKay St., Cambridge, ON, N1R 4G8

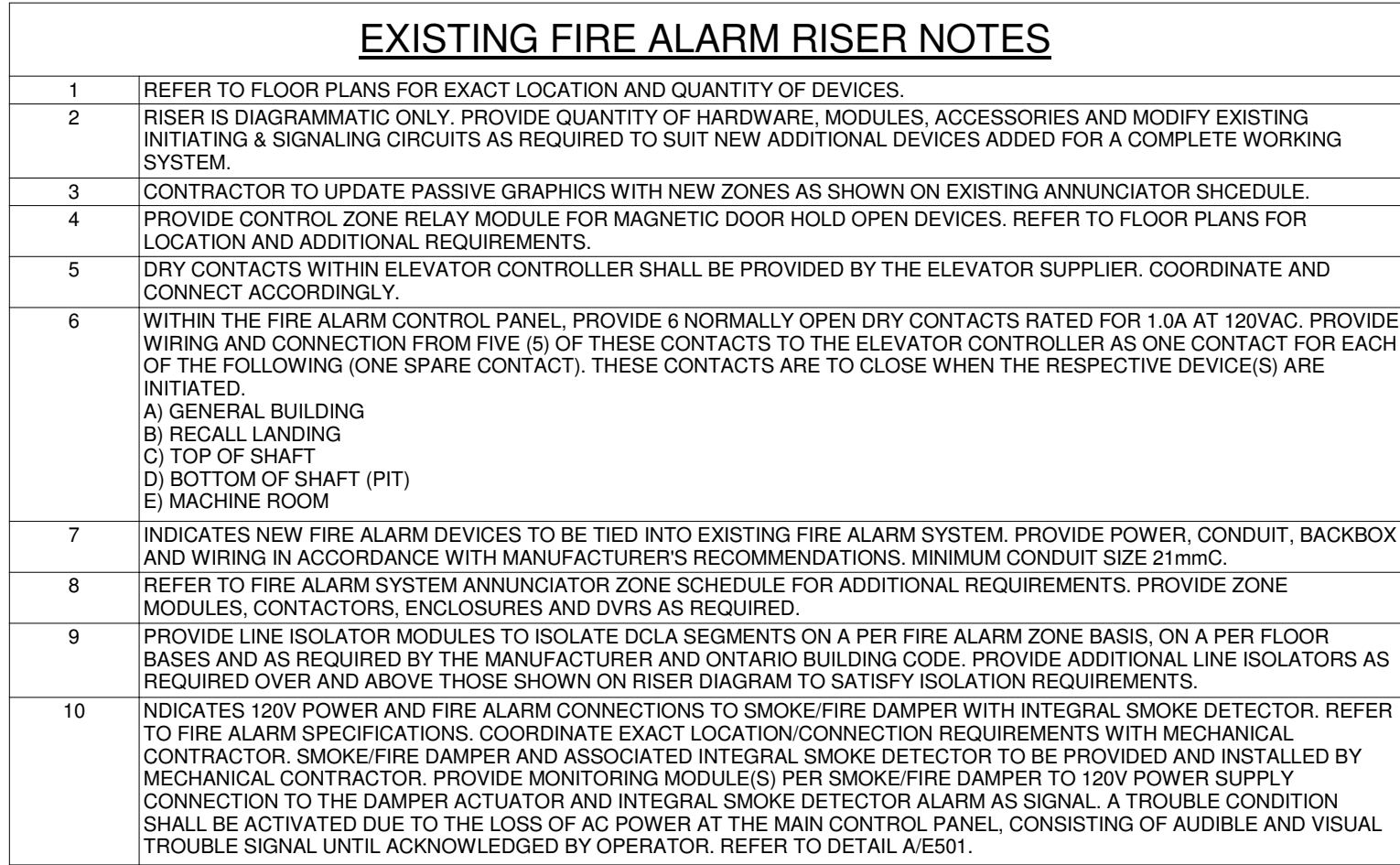
DRAWING TITLE

ENLARGED PLANS (4
OF 4)

SCALE	DRAWING NUMBER
As Indicated	
SHEET SIZE	
24X36	
PROJECT NUMBER	E304
24162	



SCALE	DRAWING NUMBER
As Indicated	
SHEET SIZE	
24X36	
PROJECT NUMBER	E401
24162	



<u>EXISTING FIRE ALARM ANNUNCIATOR SCHEDULE</u>					
ZONE	DESCRIPTION	ALARM	SUPERVISORY	NEW	EXISTING
1	CAFETERIA BOILER RM GIRLS GYM	*			*
2	MAIN OFFICE	*			*
3	BOYS GYM AREA	*			*
4	1ST FLOOR CORR D1 AND BASEMENT	*			*
5	TECHNOLOGY WING	*			*
6	ENGLISH WING B1	*			*
7	2ND FLOOR ACADEMIC B2/D2	*			*
8	2ND FLOOR A2	*			*
9	FOOD SERVICES	*			*
10	SPRINKLER FLOW FOOD SERVICES		*		*
11	SPRINKLER FLOW WOODWORKING		*		*
12	KITCHEN CO2 SYSTEM		*		*
13	SPARK ARRESTOR		*		*
14	SPARE				
15	SPARE				
16	SPARE				
17	SPARE				
18	ELEV CORR & ELEV MACH RM				*
19	ELEC SHAFT				*
20	SPARE				
21	SPARE				
22	SPARE				
23	SPARE				
24	PORTABLES	*			*
25	SPARE				
26	SPARE				
27	SPARE				
28	SPARE				
29	SPARE				
30	SPARE				
31	SPARE				
32	SPARE				
33	SPARE				
34	SPARE				
35	SPARE				
36	SPARE				
37	SPARE				
38	SPRINKLER FOOD SERVICES TAMPER		*		*
39	SPRINKLER WOOD SHOP TAMPER		*		*
40	SPARK ARRESTOR TROUBLE		*		*
41	SPRINKLER MAIN INCOMING TAMPER		*		*
42	HVAC-5 DUCT SMOKE DETECTOR	*		*	*
43	SPARE	*		*	*
44	DAMPER POWER LOSS		*		*
45	FIRE SMOKE DAMPERS - 1ST FLOOR	*		*	*
46	SPARE				
47	ELEVATOR PIT/SHAFT	*		*	*
48	ELEVATOR MACHINE RM	*		*	*
49	FIRE SMOKE DAMPERS - 2ND FLOOR	*		*	*

FIRE ALARM PARTIAL SEQUENCE OF OPERATION – SINGLE STAGE:

THE EXISTING FIRE ALARM SYSTEM INCLUDES MODIFICATIONS WHICH CONSIST OF NOTIFICATION DEVICES, ALARM INITIATING DEVICES AND ANCILLARY CONNECTIONS AS INDICATED ON ELECTRICAL DESIGN DRAWINGS AND SPECIFICATIONS.

ALARM ACTIVATION

- F UPON ACTIVATION OF ANY ALARM INITIATING DEVICE (MANUAL STATION, HEAT DETECTOR, SMOKE DETECTOR, DUCT ETC.) SHALL CAUSE THE FOLLOWING FIRE ALARM SYSTEM ALARM ACTIONS:
 - G 1. CAUSE THE ACTUATION OF THE LOCAL FIRE ALARM AND REMOTE ANNUNCIATOR PANEL(S).
 - H 2. CAUSE ZONE OF ALARM INITIATING DEVICE TO BE INDICATED AT THE CONTROL PANEL(S) AND REMOTE ANNUNCIATOR PANEL(S).
 - I 3. CAUSE AUXILIARY CONTACTS TO ACTIVATE AND INITIATE ELEVATOR RECALL PER CSA-B44 (EXCLUDING ALARM INITIATED BY MANUAL PULL STATIONS).
 - J 4. CAUSE AUXILIARY CONTACTS TO ACTIVATE AIR-HANDLING UNIT SHUT DOWN
 - K 5. CAUSE AUXILIARY CONTACTS TO ACTIVATE AND ELECTRO-MAGNETICALLY HELD OPEN DOORS TO CLOSE AUTOMATICALLY.
 - L 6. ACTIVATE THE COMMON ALARM POINT TO SIGNAL THE LOCAL FIRE DEPARTMENT OR APPROVED CENTRAL MONITORING AGENCY OF THE ALARM CONDITION.
 - M 7. CAUSE THE ALARM AUDIBLE NOTIFICATION DEVICES TO SOUND A TEMPORAL 3 PATTERN THROUGHOUT THE BUILDING UNTIL SILENCED.
 - N 8. CAUSE THE VISUAL NOTIFICATION DEVICES TO ACTIVATE THROUGHOUT THE BUILDING UNTIL AUDIBLE ALARM IS SILENCED OR SYSTEM RESET
 - O 9. LOG THE ALARM EVENT IN THE HISTORICAL EVENT LOG FILE.

TROUBLE ACTIVATION

1	OPERATION OF ANY SYSTEM OR DEVICE THROUGH SIGNAL SHALL CAUSE THE FOLLOWING FIRE ALARM SYSTEM TROUBLE ACTIONS:
A	CAUSE AN AUDIBLE AND VISUAL TROUBLE SIGNAL AT THE CONTROL PANEL(S) AND REMOTE TROUBLE INDICATOR(S).
B	ACTIVATE THE COMMON TROUBLE POINT TO SIGNAL THE LOCAL FIRE DEPARTMENT OR APPROVED CENTRAL MONITORING AGENCY OF THE TROUBLE CONDITION.
C	LOG THE ALARM EVENT IN THE HISTORICAL EVENT LOG FILE.
D	DESCRIBE THE NATURE OF THE TROUBLE ON THE CONTROL PANEL(S) LCD DISPLAY AND REMOTE ANNUNCIATOR PANEL(S) THE FOLLOWING TROUBLE CONDITIONS SHALL BE MONITORED:
I	OPEN CIRCUIT FAILURE IN THE FIELD WIRING OF AN ADDRESSABLE LOOP, ADDRESSABLE DETECTION, SIGNAL, MODULE, OR A SHORT CIRCUIT ON AN ADDRESSABLE LOOP, CONVENTIONAL DETECTION OR SIGNAL CIRCUIT.
II	DISCONNECTION OR FAILURE OF THE STANDBY BATTERIES.
III	A GROUND FAULT CONDITION ON A LOOP OR SIGNAL CIRCUIT OR FIELD WIRE.
IV	FAILURE OF THE MAIN 120VAC POWER SUPPLIED TO THE PANEL.
V	REMEDIATION OR MALFUNCTION OF ANY ADDRESSABLE FIELD DEVICE OR ANY SUPERVISED PANEL MODULE OR COMPONENT.
VI	FIRE/SMOKE DAMPER MONITOR MODULE SIGNAL FOR LOSS OF AC POWER TO DAMPER ASSEMBLY.

SYSTEM SILENCE

1 THE AUDIBLE NOTIFICATION DEVICES SHALL CONTINUE TO SOUND DURING ALARM CONDITIONS UNTIL MANUALLY OR
AUTOMATICALLY SILENCED. AUTOMATIC SILENCING SHALL NOT BE POSSIBLE DURING THE FIRST 5 MIN OF ALARM
OPERATION.

2 THE CONTROL PANELS AND REMOTE BUZZERS SHALL BE SILENCED BY OPERATION OF THE PANELS
ACKNOWLEDGE SWITCH.

SYSTEM RESET

1 THE ALARM, SUPERVISORY AND TROUBLE CONDITIONS SHALL BE CLEARED ONLY UPON ACTIVATION OF THE FIRE ALARM CONTROL PANEL RESET SWITCH, AFTER THE DEVICE THAT INITIATED THE ALARM HAS BEEN CLEARED OR RESTORED.

The contractor shall verify all dimensions and report all errors and discrepancies to the Consultant before commencement of the work.

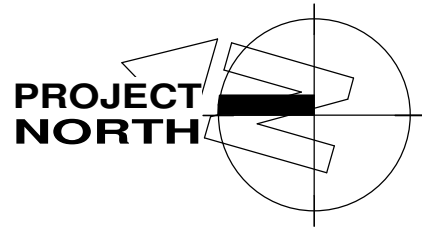
The drawings show general arrangement of services. Follow as closely as actual building construction will permit. Obtain approval for relocation of service from Consultant before commencement of the work.

The drawings do not indicate all offsets fitting and accessories which may be required. Provide the same to meet the required conditions.

Drawings and specifications, etc., prepared and issued by the Consultant are the property of the Consultant and must be returned at the completion of the project. These documents are not to be duplicated or copied without the consent of the Consultant.

Do not scale this drawing.

© 2025 DEI Consulting Engineers Inc.

[illegible]

CHRONOLOGY	DATE



aba architects inc.



CUENT

PROJECT NAME

GLENVIEW PARK SECONDARY SCHOOL HVAC IMPROVEMENTS

55 McKay St., Cambridge, ON, N1R 4G8

DRAWING TITLE

PARTIAL FIRE ALARM
RISER DIAGRAM AND
ANNUNCIATOR
SCHEDULE

SCALE As Indicated	DRAWING NUMBER E501
SHEET SIZE 24X36	
PROJECT NUMBER 24162	