

Item	Manufacturer/Catalog Number	Voltage	Lamp	Mounting	CRI	Listings	Description
L1	COOPER CAT. #24CZ2-LD5-40-UNV-L840-CD-1 LITHONIA CAT. #2BLT4 40L AD5M MVOLT G21 LP840 SIGNIFY CAT. #2FGXG42B840-4-RS-UNV-DIM	120V	LED 4257 LUMENS 4000K 30.4W	RECESSED	80	DLC	2'x4' (610mmX1220mm) VOLUMETRIC LED TROFFER C/W SMOOTH FROSTED ACRYLIC CENTRE LENS, 1% 0-10V DIMMING DRIVER, AND WHITE FINISH.
L2	COOPER CAT. #24FPL2SCT3 LITHONIA CAT. #CPANL-2X4-AL06-SW7-M2 ELITE CAT. #24-FPL1-LED-3000/4000/5000L-DIM10-MVOLT-35K/40K/50K-85	120V	LED 4795 LUMENS 4000K 41.5W	RECESSED	80	DLC	2'x4' (610mmX1220mm) EDGE-LIT LED FLAT PANEL C/W FROSTED ACRYLIC LENS, SWITCHABLE COLOUR TEMPERATURE AND LUMEN OUTPUT, 10% 0-10V DIMMING DRIVER, AND WHITE FINISH. NOTE: FIXTURE IS TO BE SET TO 4000K AND MEDIUM OUTPUT.
EMERG. BATT. C/W INTE-GRAL HEADS (T-BAR)	AIMLITE #EBWL SERIES: EM-1 #EBWL-EMWHT-TB-2-ATD/VDR C/W KIT BKT497 STANPRO CAT. #SWL SERIES EM-1 #SWL-EMWH-TB-W-AT/TP C/W KIT BKT497 LUMACELL #LBL SERIES EM-1 #LBL-EM C/W KIT-5R-L	120V	LED 14W	RECESSED	N/A	N/A	LONG LIFE, SEALED RECHARGABLE VANDAL RESISTANT BATTERY C/W ADJUSTABLE 14W LED MODULES, POLYCARBONATE BODY, 90 MINUTE BATTERY DURATION, RECESSED T-BAR MOUNTING, T-BAR KIT AND AUTOTEST FEATURE.

NOTES: ① FOR INFORMATION REGARDING DRIVER AND LENS INFORMATION REFER TO SPECIFICATION. ② LED LUMEN VALUES QUOTED FOR FIXTURES ARE TO BE CONSIDERED MINIMUM, AND AS ABSOLUTE OR DELIVERED LUMENS. LUMEN VALUES SHOULD NOT EXCEED MORE THAN 10% OF SPECIFIED OUTPUT. ③ IF THERE ARE ANY DISCREPANCIES BETWEEN THE FIXTURE PART NUMBER AND DESCRIPTION, IT IS THE RESPONSIBILITY OF THIS CONTRACTOR TO BRING THIS TO THE ELECTRICAL CONSULTANTS ATTENTION PRIOR TO SHOP DRAWING REVIEW.

Space Type	Control Sequence / Control Device(s):	Control System	Detail Reference
Classrooms	<b>Sequence:</b> ON: Lights will turn on to 50% automatically when occupancy is detected. OFF: 20 minutes after the area tied to a given room controller has been vacated, the lights will automatically turn off. MANUAL: The occupant can adjust lighting to desired level via wall station dimmer.	DIGITAL ROOM CONTROL SYSTEM	B/E1.1
Workroom	<b>Sequence:</b> ON: Lights turned on automatically when occupancy is detected. OFF: 10 minutes after the room has been vacated, the lights will automatically turn off. OVERRIDE: User manually adjusts on/off and that state shall remain without reverting to previous state unless sensors do not detect occupancy for extended period, whereby normal sensor operation is to resume.	DIMMING WALL SWITCH OCCUPANCY CONTROL	A/E1.1

ELECTRICAL SYMBOLS		NOTE: ALL SYMBOLS MAY NOT BE USED	
LIGHTING		SECURITY	
	LIGHT FIXTURE TYPE AS INDICATED		SECURITY DETECTOR (SURFACE MOUNTED)
	CEILING RECESSED BATTERY UNIT C/W INTEGRAL EMERGENCY FIXTURE	COMMUNICATIONS	
	SINGLE POLE SWITCH (3=3 WAY, 4=4 WAY, P=PILOT LIGHT, K=KEYED, DM=DIMMER, M=MOTOR RATED)		WIRELESS ACCESS POINT. PROVIDE 3/4" (21mm) C TO CABLE MANAGEMENT SYSTEM
	OCCUPANCY SENSOR (PASSIVE)	GENERAL	
	CEILING MOUNTED MOTION SENSOR	ER	INDICATES EXISTING ITEM TO REMAIN
	DIGITAL WALL DIMMER STATION	D	INDICATES EXISTING ITEM TO BE DELETED
	DIGITAL ROOM CONTROLLER	R	INDICATES EXISTING ITEM TO BE RELOCATED/IN RELOCATED POSITION
FIRE ALARM			NOTE INDICATOR
	SMOKE DETECTOR (RL=RELAY BASE)		ZONE INDICATOR

The contractor shall verify all dimensions and report all errors and discrepancies to the Consultant before commencement of the work. The drawings show general arrangement of services. Follow as closely as actual building construction will permit. Obtain approval for relocation of service from Consultant before commencement of the work. The drawings do not indicate all offsets fitting and accessories which may be required. Provide the same to meet the required conditions. Drawings and specifications, etc., prepared and issued by the consultant are the property of the consultant and must be returned at the completion of the project. These documents are not to be duplicated or copied without the consent of the Consultant. Do not scale this drawing. © 2025 DEI Consulting Engineers Inc.

**DEI**  
Consulting Engineers  
MECHANICAL | ELECTRICAL | AQUATIC

55 Northland Road, Waterloo, ON N2V 1Y8  
Phone: 519-725-3555  
Website: deiconsultants.ca  
Project Number: 24405

NOTE: THIS DRAWING IS NOT TO BE SCALED. THE CONTRACTOR IS RESPONSIBLE FOR THE VERIFICATION OF ALL SITE DIMENSIONS AND FOR NOTIFYING THE ARCHITECT OF ANY SITE CONDITIONS AND SITE MEASUREMENTS THAT ARE NOT CONSISTENT WITH THE DRAWINGS.

No.	Revision	Date

No.	Issue	Date
1	Issued for Tender & Permit	Mar 4, 2025

Project:  
WRDSB GRAND RIVER COLLEGIATE INSTITUTE  
#24-7692-RFT - ASBESTOS REMOVAL FOR FAMILY STUDIES RENOVATION

WATERLOO REGION DISTRICT SCHOOL BOARD  
175 INDIAN RD. KITCHENER, ON N2B 2S7

drawing  
OVERALL PLAN & LEGEND

drawing scale  
AS NOTED

ward99 project number  
23011 - WRDSB GRAND RIVER FAMILY STUDIES

ward99  
architects

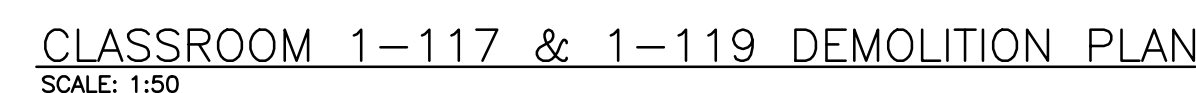
Wa  
RD.  
99

ward99 architects Inc.  
7500 Highway 27, Unit 27B  
Vaughan ON L4H 0J2  
info@ward99architects.com  
416-613-5880 www.ward99architects.com

drawing no.

**E1.1**



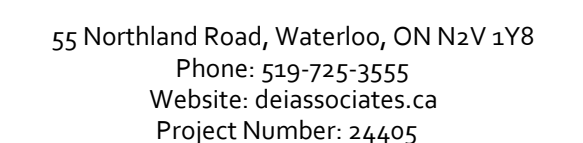
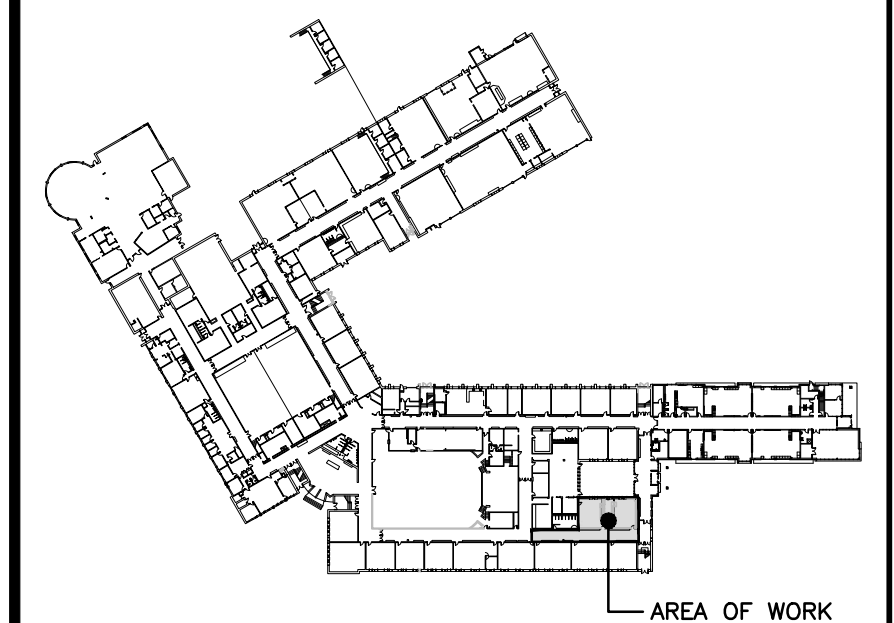


- 'ER' DENOTES EXISTING ITEM TO REMAIN.
- EXISTING ELECTRICAL EQUIPMENT NOT SHOWN SHALL REMAIN UNLESS NOTED OTHERWISE.
- 'R' INDICATES EXISTING ITEM TO BE RELOCATED. REFER TO RENOVATION DRAWINGS AND RELOCATE DEVICE AND WIRING TO SUIT. UNLESS OTHERWISE NOTED.
- 'D' INDICATES EXISTING ITEM TO BE DEMOLISHED, UNLESS OTHERWISE NOTED DISCONNECT AND REMOVE NOTED DEVICE AND WIRING BACK TO SOURCE.

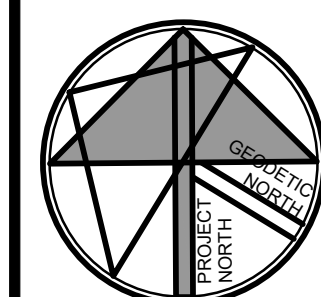
- 1 MAINTAIN EXISTING LOCAL LIGHTING BRANCH CIRCUIT FOR RE-USE WITH NEW FIXTURES AND NEW/RELOCATED LIGHTING CONTROLS PER RENOVATION PLANS.
- 2 MAINTAIN EXISTING DEVICE FOR REINSTALLATION PER RENOVATION PLAN.
- 3 REMOVE EXISTING DEVICE. MAINTAIN EXISTING WIRING AND BACKBOX FOR REPLACEMENT DEVICE. REFER TO RENOVATION DRAWINGS FOR CONTINUATION.
- 4 EXISTING SWITCH IS TO BE REMOVED COMPLETE. PULL LINE AND LOAD SIDE WIRING UP TO ACCESSIBLE CEILING SPACE FOR CONNECTION TO NEW POWER PACK. MAINTAIN EXISTING BACKBOX FOR NEW DEVICE.



KEYPLAN



NOTE: THIS DRAWING IS NOT TO BE SCALED. THE CONTRACTOR IS RESPONSIBLE FOR THE VERIFICATION OF ALL SITE DIMENSIONS AND FOR NOTIFYING THE ARCHITECT OF ANY SITE CONDITIONS AND SITE MEASUREMENTS THAT ARE NOT CONSISTENT WITH THE DRAWINGS.

[illegible]

No.	Issue	Date
1	Issued for Tender & Permit	Mar 4, 2025

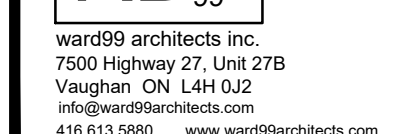
project  
WRDSB GRAND RIVER COLLEGIATE INSTITUTE  
#24-7692-RFT - ASBESTOS REMOVAL FOR FAMILY STUDIES RENOVATION

WATERLOO REGION DISTRICT SCHOOL BOARD  
175 INDIAN RD. KITCHENER, ON N2B 2S7

drawing  
ENLARGED DEMOLITION PLANdrawing scale  
AS NOTED

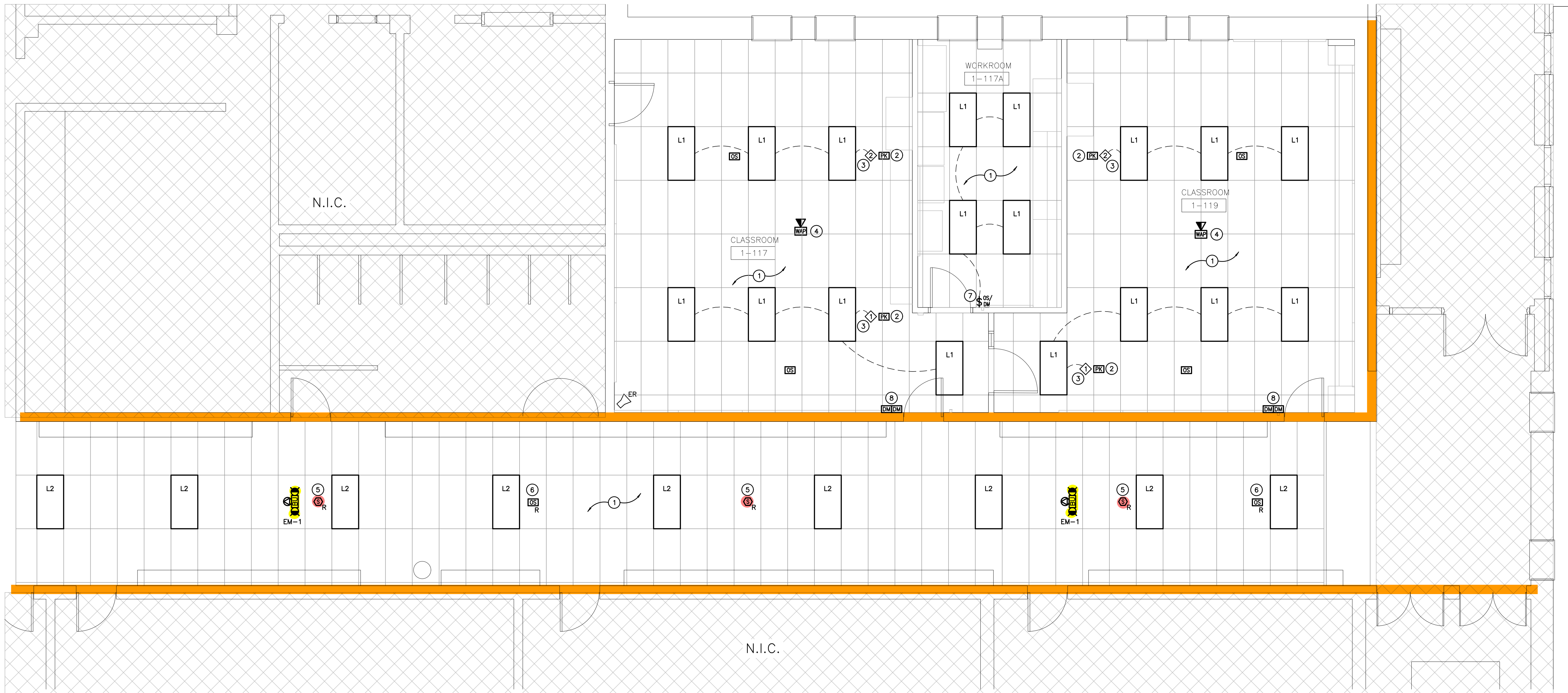
ward99 project number

23011 - WRDSB GRAND RIVER FAMILY STUDIES



drawing no.

## E2.1

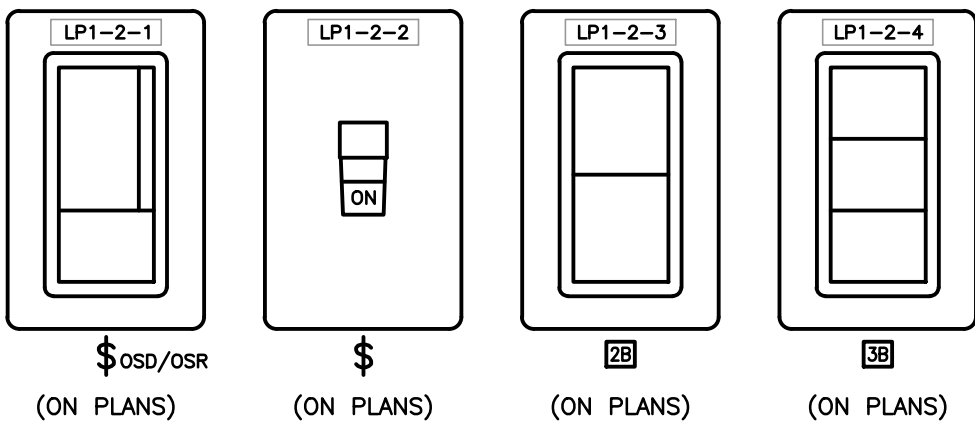


CLASSROOM 1-117 & 1-119 RENOVATION PLAN  
SCALE: 1:50

BUILDING INSPECTOR TO VERIFY IF ADDITIONAL  
EXIT SIGNS / EMERGENCY LIGHTING IS REQUIRED.

CIRCUIT LABELS

PROVIDE P-TOUCH LABELS INDICATING PANEL AND CIRCUIT LABEL ON ALL LIGHT  
SWITCH AND LIGHTING CONTROL DEVICE FACEPLATES. INCLUDE SWITCH LEG INDICATION  
FOR LIGHTING CONTROLS AND SWITCHES. REFER TO SPECIFICATIONS AND DETAILS.



NOTES:

1. LIGHT SWITCHES ARE TO BE C/W P-TOUCH LABEL.
2. LABEL IS TO BE WHITE WITH TYPE-WRITTEN BLACK LETTERING AND PLACED CENTERLINE OF SWITCH AS SHOWN.
3. CIRCUIT DESCRIPTOR IS TO BE C/W POWER PANEL, CIRCUIT INDICATION, AND SWITCH LEG.

A-RECEPTACLE LABELLING DETAIL

SCALE: 1:50

GENERAL RENOVATION NOTES

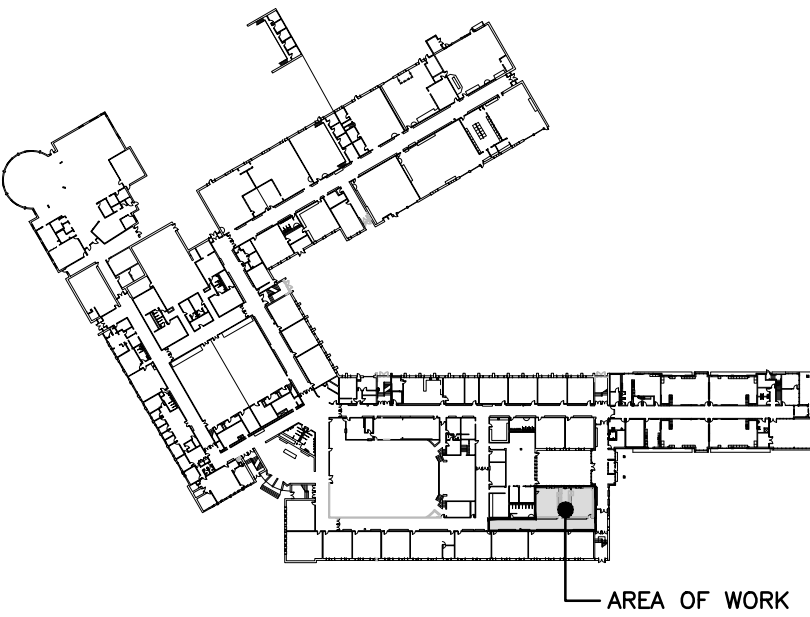
- 'ER' INDICATES EXISTING ITEM TO REMAIN.
- 'R' INDICATES EXISTING ITEM IN RELOCATED POSITION.
- ALL DEVICES SHOWN ARE NEW UNLESS OTHERWISE NOTED.
- EXISTING ELECTRICAL EQUIPMENT NOT SHOWN SHALL REMAIN UNLESS OTHERWISE NOTED.
- MAINTAIN SERVICE TO ALL EXISTING DEVICES TO REMAIN.
- REVISE PANEL DIRECTORIES TO SUIT CHANGES (TYPED).

SPECIFIC RENOVATION NOTES

1. FIXTURES IN INDICATED AREA ARE TO BE CONNECTED TO EXISTING CIRCUIT AND NEW/RELOCATED CONTROLS AS SHOWN.
2. REWORK EXISTING LINE AND LOAD SIDE WIRING THROUGH POWER PACK TO SUIT. REFER TO B/E1.1. POWER PACK TO BE INSTALLED ABOVE ACCESSIBLE CEILING SPACE IN FINISHED AREAS.
3. INDICATES CONTROL ZONE GROUPS OF LIGHT FIXTURES WITHIN EACH AREA. REFER TO LIGHTING CONTROL DETAILS AND SEQUENCE OF OPERATION.
4. INDICATES EXISTING RE-USED DEVICE AND DATA DROP IN RELOCATED POSITION.
5. RELOCATE EXISTING FIRE ALARM INITIATING DEVICE AND RECONNECT TO EXISTING LOCAL INITIATING CIRCUIT. RE-VERIFY PORTIONS OF ALARM SYSTEM TO CAN/ULC-5537. REFER TO SPECIFICATIONS FOR FURTHER DETAILS AND REQUIREMENTS.
6. RECONNECT RELOCATED OCCUPANCY SENSOR TO EXISTING CORRIDOR LIGHTING CONTROL. EXTEND WIRING AS NECESSARY.
7. PROVIDE NEW DEVICE. CONNECT TO EXISTING WIRING MADE AVAILABLE DURING DEMOLITION. MOUNT TO EXISTING BACKBOX.
8. MOUNT DEVICE IN BACKBOX MADE AVAILABLE DURING DEMOLITION. PROVIDE NEW STAINLESS STEEL COVERPLATE TO SUIT NEW DEVICE.

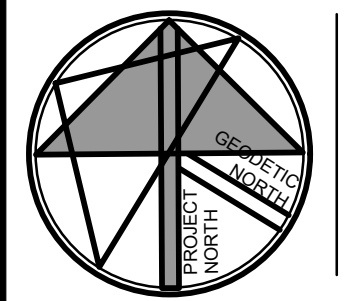
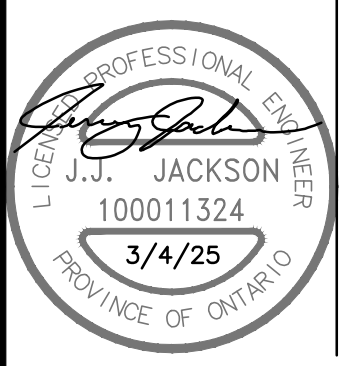
The contractor shall verify all dimensions and report all errors and discrepancies to the Consultant before commencement of the work. The drawings show general arrangement of services. Follow as closely as actual building construction will permit. Obtain approval for relocation of service from Consultant before commencement of the work. The drawings do not indicate all offsets fitting and accessories which may be required. Provide the same to meet the required conditions. Drawings and specifications, etc., prepared and issued by the consultant are the property of the consultant and must be returned at the completion of the project. These documents are not to be duplicated or copied without the consent of the Consultant. Do not scale this drawing. © 2025 DEI Consulting Engineers Inc.

KEYPLAN



**DEI**  
Consulting Engineers  
MECHANICAL | ELECTRICAL | AQUATIC  
55 Northland Road, Waterloo, ON N2V 1Y8  
Phone: 519-725-3555  
Website: deiassociates.ca  
Project Number: 24405

NOTE: THIS DRAWING IS NOT TO BE SCALED. THE CONTRACTOR IS RESPONSIBLE FOR THE VERIFICATION OF ALL SITE DIMENSIONS AND FOR NOTIFYING THE ARCHITECT OF ANY SITE CONDITIONS AND SITE MEASUREMENTS THAT ARE NOT CONSISTENT WITH THE DRAWINGS.



No.	Revision	Date

No.	Issue	Date
1	Issued for Tender & Permit	Mar 4, 2025

Project: WRDSB GRAND RIVER COLLEGIATE INSTITUTE  
#24-7692-RFT - ASBESTOS REMOVAL FOR FAMILY STUDIES RENOVATION

WATERLOO REGION DISTRICT SCHOOL BOARD  
175 INDIAN RD, KITCHENER, ON N2B 2S7

drawing  
ENLARGED RENOVATION PLAN

drawing scale  
AS NOTED

ward99 project number  
23011 - WRDSB GRAND RIVER FAMILY STUDIES

ward99 architects  
drawing no.  
**E3.1**  
ward99 architects inc.  
7500 Highway 27, Unit 27B  
Vaughan ON L4H 0J2  
info@ward99architects.com  
416-913-5880 www.ward99architects.com

