

| EQUIPMENT SCHEDULE BY DIVISION 15000 |                              |                           |           |             |              |               |            |             |                    |                    |             |         |               | SUPPLIED AND INSTALLED BY DIVISION 16 |  |                      |                   |                 |            |       |             |                |                   |            |          |               |                      |      |          |          |   |
|--------------------------------------|------------------------------|---------------------------|-----------|-------------|--------------|---------------|------------|-------------|--------------------|--------------------|-------------|---------|---------------|---------------------------------------|--|----------------------|-------------------|-----------------|------------|-------|-------------|----------------|-------------------|------------|----------|---------------|----------------------|------|----------|----------|---|
| NEW EQUIPMENT                        | EXISTING EQUIPMENT TO REMAIN | REMOVE EXISTING EQUIPMENT | EQUIP. ID | DESCRIPTION | MODEL NUMBER | MANUFACTURER  | FLOW (CFM) | PRESS. (IN) | COOLING CAP. (MBH) | HEATING CAP. (MBH) | SPEED (RPM) | VOLT.   | LOAD          | CONTROLS BY DIVISION 15900            | ACCESSORIES  | APPROX. WEIGHT (LBS) | VFD BY DIV. 15000 | VENTN AIR (CFM) | W.P. DISC. | DISC. | COMB. DISC. | VFD C/W BYPASS | COMB. M.S./H.O.A. | REMOTE SIS | M.S.P.L. | AUX. CONTACTS | F.A. SHUT DOWN (DSD) | CODE | CONTROLS | COMMENTS |   |
| ●                                    | ---                          | ---                       | SP-1 & 2  | SUMP PUMPS  | MW50-11      | PENTAIR MYERS | 3000 GPH   | 15 FT       | ---                | ---                | 1625        | 120V/1Ø | 1/2 HP 9 AMPS | REFER TO PANEL SPEC.                  | CLASS 30 CAST IRON, CARBON SHAFT SEAL, 2" NPT, DUPLEX CONTROL PANEL, PUMP RUN LIGHTS, ALARM, PUMP HOA, HIGH LEVEL FAULT, EEMAC/ENEM 4 WP STAINLESS CONTROL PANEL, DEAD FRONT PANEL, LOCKABLE DOOR. | 50                   | ---               | ---             | ●          | ---   | ---         | ---            | ---               | ---        | ---      | ---           | ---                  | ---  | 5        | ---      | INSTALL PANEL, WIRE POWER TO PANEL AND PUMPS, WIRE FLOAT SWITCHES |

**DIVISION 16 CODE NOTES:**

1 DISCONNECT POWER AND CONTROLS FROM EXISTING SOURCE. REMOVE ALL OBSOLETE DEVICES AND WIRING.

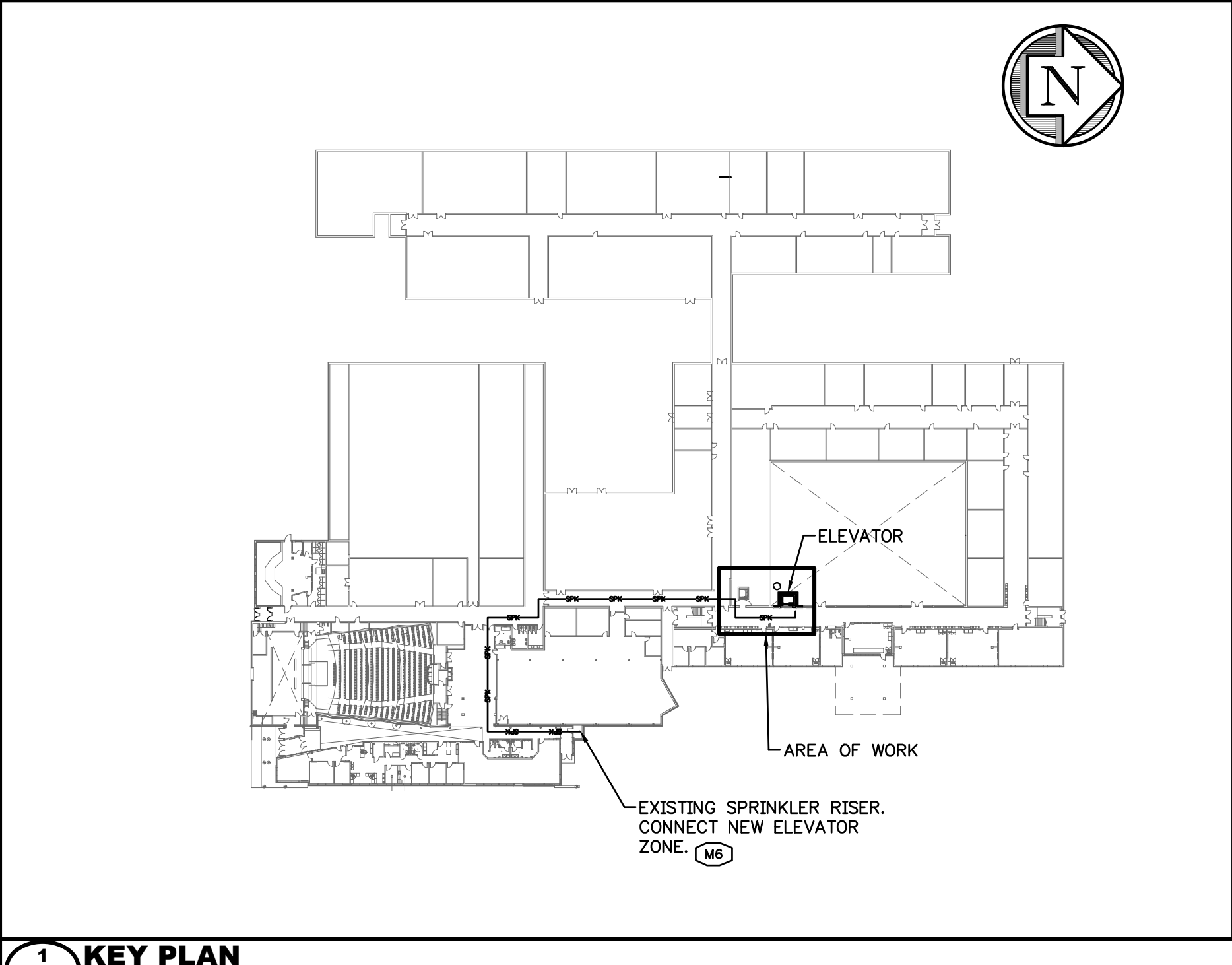
2 DISCONNECT EXISTING POWER

3 EXISTING STARTER TO BE REUSED. EXTEND EXISTING POWER TO NEW LOCATION. TERMINATE

4 PANEL (PANEL BY DIV. 15). MAKE ALL POWER TERMINATIONS TO POWER NEW EQUIPMENT.

5 DIVISION 16 TO PROVIDE CONDUCTORS, EMT, DISCONNECT AND STARTER DEVICES. MAKE ALL TERMINATIONS TO POWER NEW EQUIPMENT.

6 PROVIDE FOR 120V/1Ø CONTROL VOLTAGE



| NEW |                               | EXISTING TO REMAIN |                     | EXISTING TO BE REMOVED |                               |
|-----|-------------------------------|--------------------|---------------------|------------------------|-------------------------------|
| CTE | CONNECT TO EXISTING           | ---                | DOMESTIC COLD WATER | ---                    | DOMESTIC HOT WATER            |
| --- | DOMESTIC RECIRCULATED WATER   | ---                | HWS                 | ---                    | HWR                           |
| --- | HOT WATER SUPPLY              | ---                | HWR                 | ---                    | HOT WATER RETURN              |
| --- | HOT WATER RETURN              | ---                | ST                  | ---                    | STORM ABOVE GRADE             |
| --- | STORM ABOVE GRADE             | ---                | SAN                 | ---                    | SANITARY ABOVE GRADE          |
| --- | SANITARY ABOVE GRADE          | ---                | ST                  | ---                    | STORM BURIED                  |
| --- | STORM BURIED                  | ---                | SAN                 | ---                    | SANITARY BURIED               |
| --- | SANITARY BURIED               | ---                | V                   | ---                    | VENT LINE                     |
| --- | VENT LINE                     | ---                | D                   | ---                    | DRAIN LINE                    |
| --- | DRAIN LINE                    | ---                | G                   | ---                    | GAS LINE                      |
| --- | GAS LINE                      | ---                | F                   | ---                    | FIRE LINE                     |
| --- | FIRE LINE                     | ---                | ○                   | ---                    | BALL VALVE                    |
| --- | BALL VALVE                    | ---                | ○                   | ---                    | GLOBE VALVE                   |
| --- | GLOBE VALVE                   | ---                | ○                   | ---                    | PNEUMATIC 2-WAY CONTROL VALVE |
| --- | PNEUMATIC 2-WAY CONTROL VALVE | ---                | ○                   | ---                    | PNEUMATIC 3-WAY CONTROL VALVE |
| --- | PNEUMATIC 3-WAY CONTROL VALVE | ---                | ○                   | ---                    | MOTORIZED 2-WAY CONTROL VALVE |
| --- | MOTORIZED 2-WAY CONTROL VALVE | ---                | ○                   | ---                    | MOTORIZED 3-WAY CONTROL VALVE |
| --- | MOTORIZED 3-WAY CONTROL VALVE | ---                | ○                   | ---                    | BUTTERFLY VALVE               |
| --- | BUTTERFLY VALVE               | ---                | ○                   | ---                    | GATE VALVE                    |
| --- | GATE VALVE                    | ---                | ○                   | ---                    | CHECK VALVE                   |

**MECHANICAL LEGEND**

**MECHANICAL NOTES**

ALL NOTES APPLY SPECIFICALLY WHERE INDICATED AND IN GENERAL WHERE APPLICABLE.

M1 CONSTRUCT SANITARY FORCE MAIN, CONNECT TO EXISTING SANITARY. SAW CUT FLOOR, EXCAVATE AND BACKFILL.

M2 CONSTRUCT VENT LINE OUT THROUGH ROOF. SAW CUT FLOOR, EXCAVATE AS INDICATED.

M3 PROVIDE FREEZE PROTECTION FOR VENT AND SAN FORCE MAIN PER O.B.C. A-7.3.5.4(1). 100mm THICK FOAM INSULATION SUITABLE FOR BURIAL IN SOIL, MIN. 1.6m WIDE.

M4 CONSTRUCT DRAIN FROM ELEVATOR SUMP TO MANHOLE. REFER TO DETAIL.

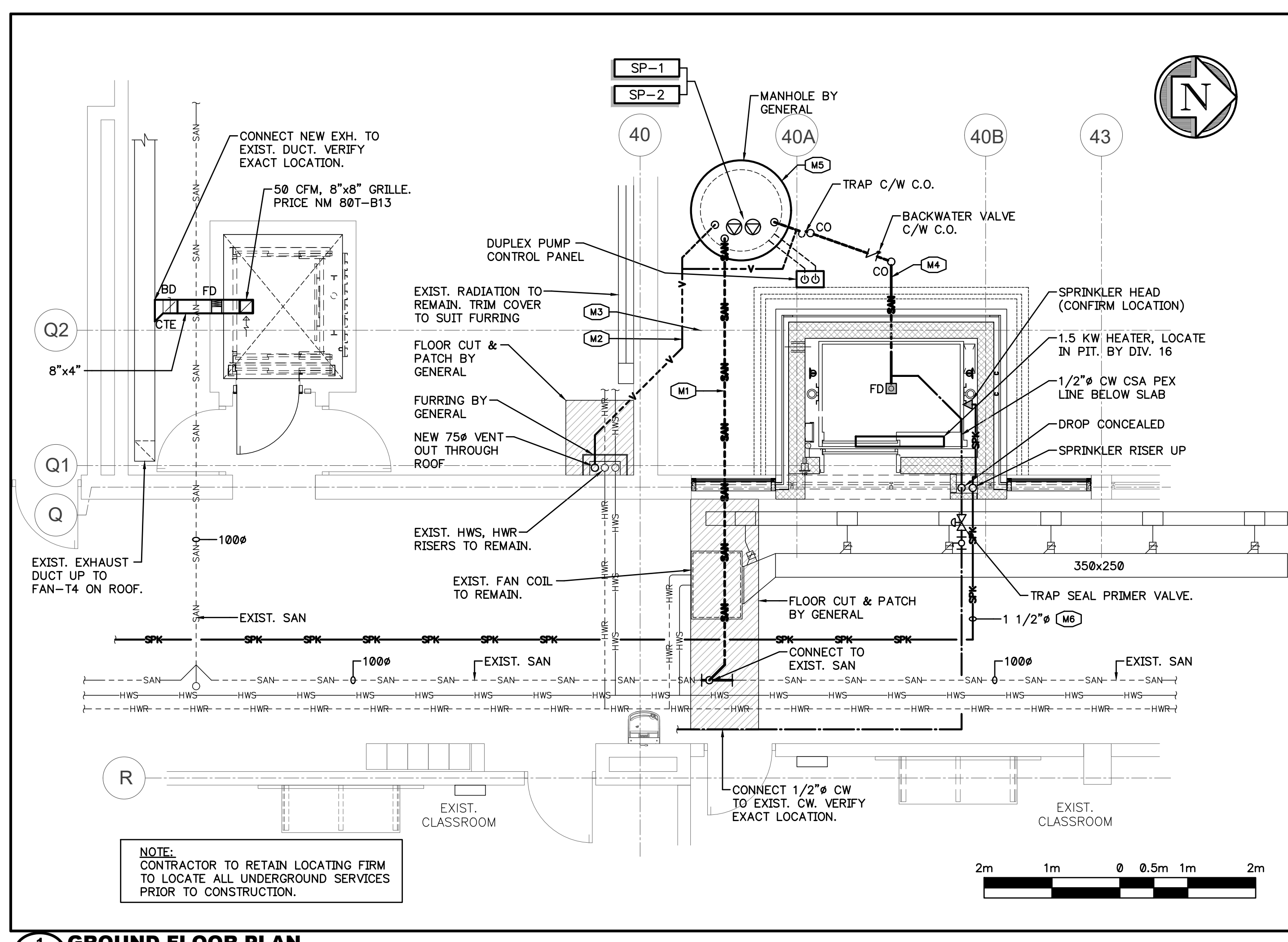
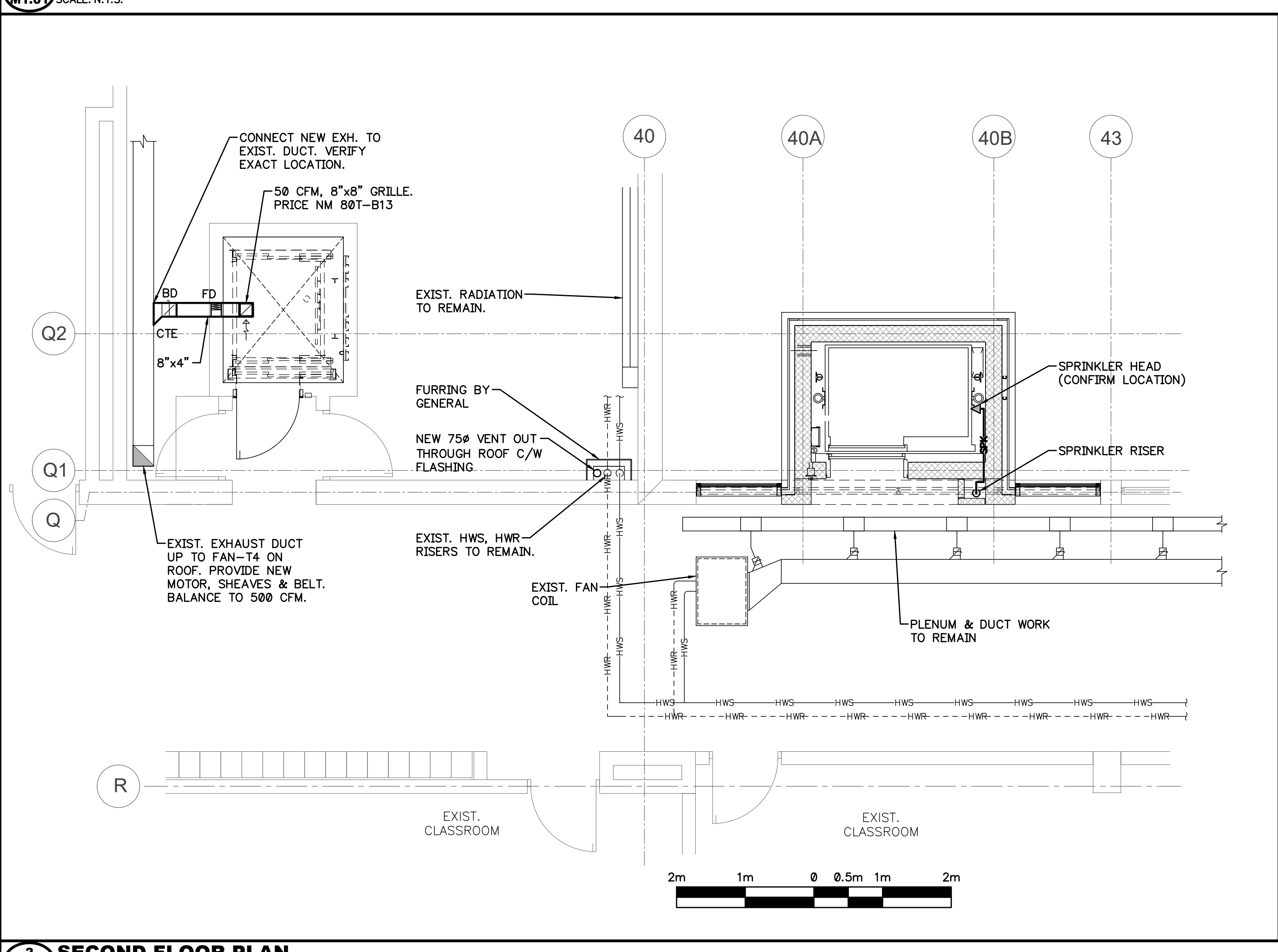
M5 PRECAST CONCRETE MANHOLE BY GENERAL. 1200mm DIA. WITH BASE, RISERS, LADDER, TOP AND OPSD GASKETED BOLTED ACCESS COVER. REFER TO DETAIL.

M6 CONSTRUCT NFPA 13 SPRINKLER ZONE FOR ELEVATOR. PIPE TO EXISTING SPRINKLER RISER, SHOWN ON KEY PLAN. ALLOW APPROX. 380 FT. CONSTRUCT NEW ZONE BRANCH ON SPRINKLER HEADER COMPLETE WITH SUPERVISED CONTROL VALVE, VALVE MONITOR SWITCH, PRESSURE GAUGE, ALARM FLOW SWITCH AND TEST PORT. RUN PIPING CONCEALED IN EXISTING CEILING, FIELD ROUTE AND OFFSET AS REQUIRED. PROVIDE FINAL MATERIAL AND TEST CERTIFICATE.

**DRAWING LIST**

M1.01 MECHANICAL PLANS  
M1.02 SPECIFICATIONS AND DETAILS

Filer Engineering Ltd.  
1046 Botanical Drive  
Burlington, Ontario  
L7T 1V1  
Phone: (905) 526-7411  
PROJ. NO. F1508



| No. | DD/MM/YY | DESCRIPTION |
|-----|----------|-------------|
| 3   | 27/05/26 | REVISION    |
| 2   | 11/05/26 | ISSUED      |
| 1   | 22/04/26 | ISSUED      |



HAMILTON-WENTWORTH  
Catholic District School Board  
Believing, Achieving, Serving

**SVEDAS / ARCHITECTS INC.**

3600 BILLINGS COURT, SUITE 100  
BURLINGTON, ONTARIO L7N 3N6  
TEL: (905) 308-7771

ELEVATOR  
FOR  
ST. JEAN DE BREBEUF  
CATHOLIC SECONDARY SCHOOL

200 ACADIA DRIVE  
HAMILTON ONTARIO

**MECHANICAL PLANS**

| SCALE      | DRAWN   | PROJECT No. |
|------------|---------|-------------|
| AS NOTED   | ARC     | 125804      |
| DATE       | CHECKED | DRAWING No. |
| APRIL 2026 | DSF/BP  | M1.01       |
|            |         | DWG: 1 of 2 |