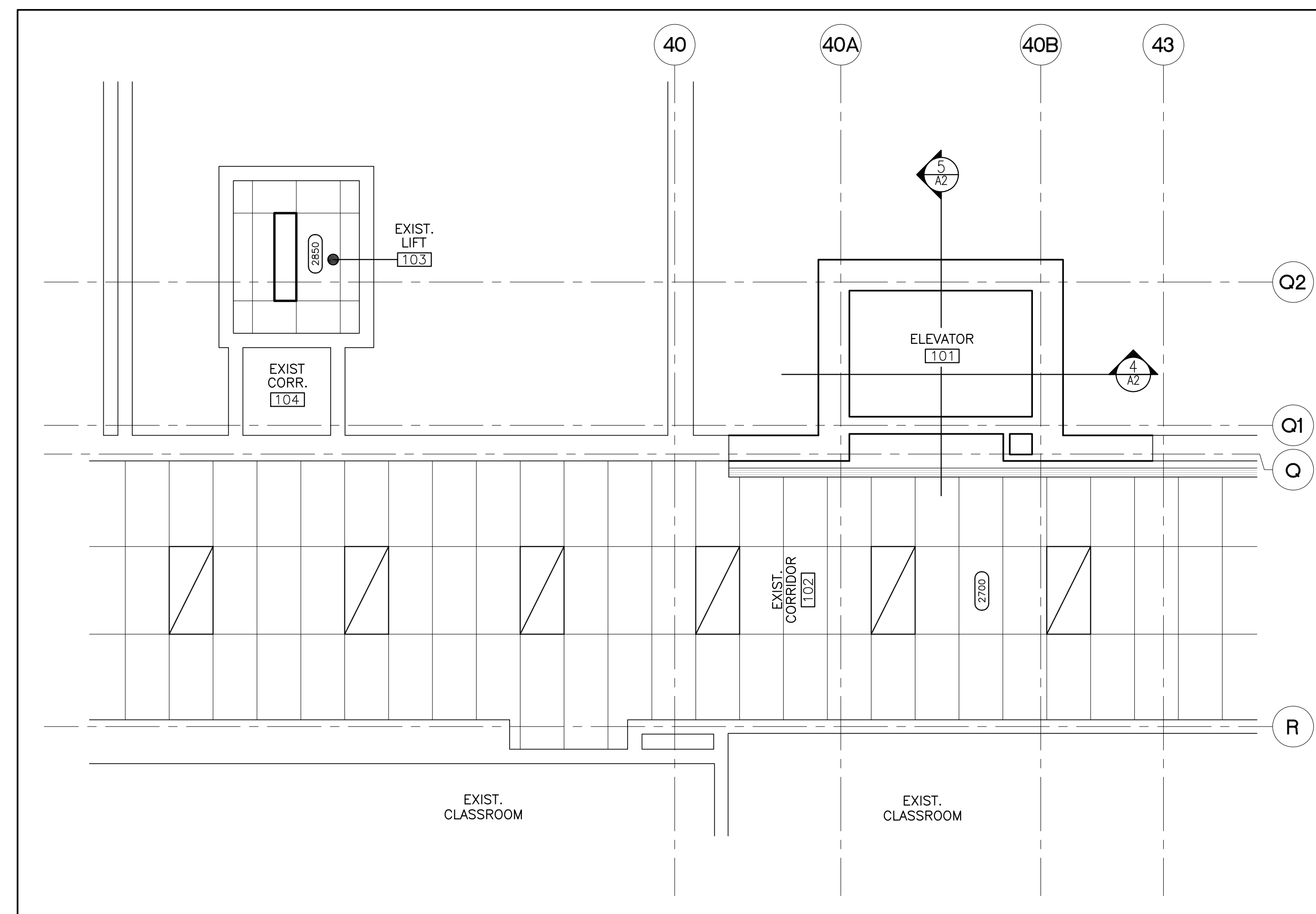


ELEVATOR @ SECOND FLOOR 2
SCALE 1:50 A4



ELEVATOR @ GROUND FLOOR 1
SCALE 1:50 A4

GENERAL NOTES

1. ALL INTERIOR HOLLOW METAL DOOR FRAMES/SCREENS TO BE 146mm DEEP UNLESS OTHERWISE DIMENSIONED ON DRAWINGS.
2. GENERAL CONTRACTOR TO FIELD VERIFY ALL DIMENSIONS PRIOR TO FABRICATION.
3. GENERAL CONTRACTOR TO VERIFY ALL QUANTITIES.
4. GLAZING: REFER TO DOOR SCHEDULE AND SPECIFICATIONS.
5. ALL HM DOORS AND HM FRAMES TO BE PAINTED.
6. COORDINATE LOCATION OF ALL SUPPLY AND RETURN AIR GRILLES & DIFFUSERS WITH DIVISION 15.
7. REFER TO MECHANICAL & ELECTRICAL DRAWINGS FOR DIVISION OF MECHANICAL AND ELECTRICAL REQUIREMENTS.
8. REFER TO ROOM FINISH SCHEDULE FOR MATERIALS & REMARKS.
9. REFER TO FLOOR PLANS AND DOOR SCHEDULE FOR FIRE RESISTANCE RATING FOR DOORS, FRAMES AND GLAZED FRAMES/SCREENS.

LEGENDS

CEILING TYPES

610x1220 SUSPENDED ACOUSTIC TILE CEILING. REFER TO SPECIFICATIONS FOR TYPES

DRYWALL CEILING/BULKHEAD

LIGHT FIXTURES

LIGHT FIXTURE CONFIGURATIONS (SHOWN IN SOLID LINE) DENOTE RECESSED/SURFACE MOUNTED FIXTURES. REFER TO ELECTRICAL DRAWINGS FOR TYPES

OTHER

CEILING HEIGHT ABOVE FINISH GROUND FLOOR

ROOM NUMBER

EXTENT OF EXISTING CEILING TO BE DEMOLISHED.

DOOR SCHEDULE															
NUMBER	DOOR SIZE AND TYPE										FRAME		PANIC	CLOSER	NOTES/REMARKS
	FROM	TO	WIDTH	THK.	HEIGHT	TYPE	MAT'L	LOUVRE	GLAZING	RATING	TYPE	MAT'L			
101	101	104	-	-	-	-	PT	-	-	-	-	-	-	-	1
102	101	102	-	-	-	-	PT	-	-	-	-	-	-	-	1
103	103	104	950	45	2150	A	PT	-	-	3/4 HR	HM1	HM/PT	3/4 HR	•	2
203	203	204	950	45	2150	A	PT	-	-	3/4 HR	HM1	HM/PT	3/4 HR	•	2

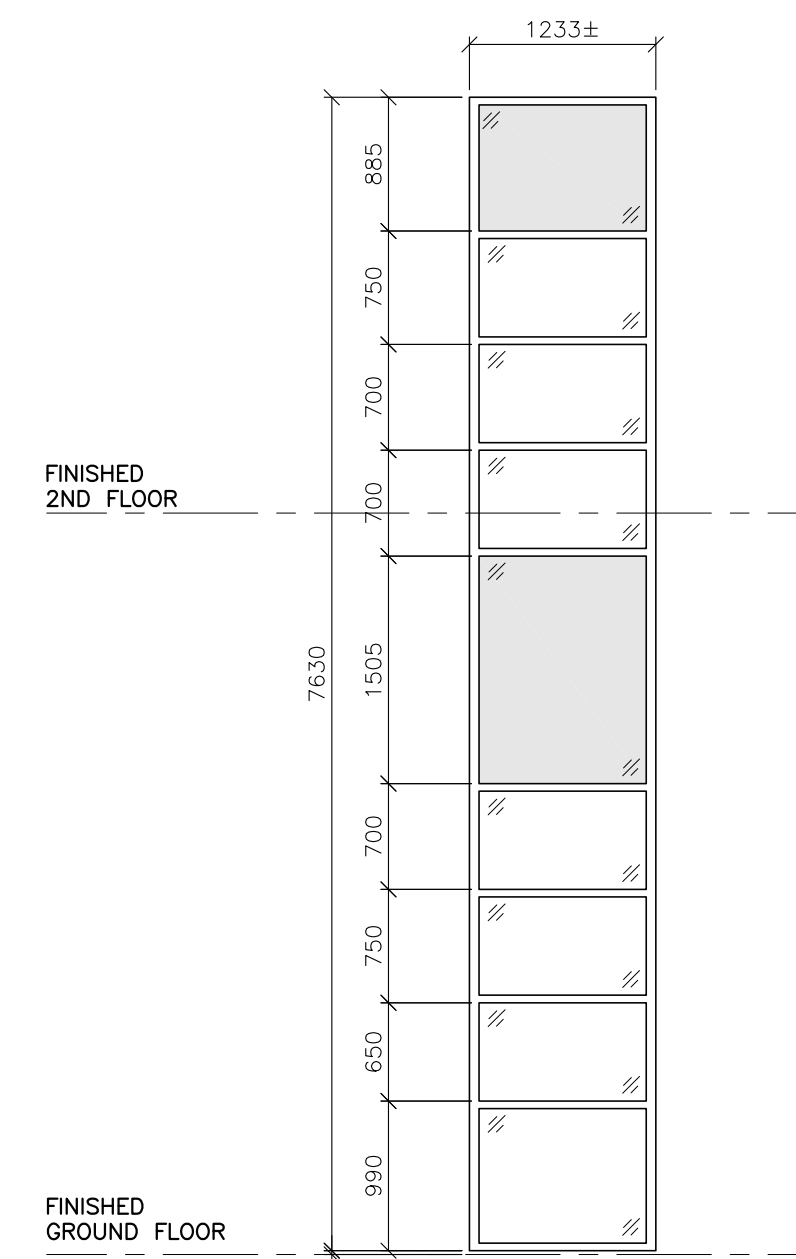
DOOR ABBREVIATION

AL - ALUMINUM
HM - HOLLOW METAL
PT - PAINTED
CA - CLEAR ANODIZED
FG-H - 6mm GEORGIAN WIRED GLASS
FG-C - 6mm CLEAR TEMPERED SAFETY GLASS

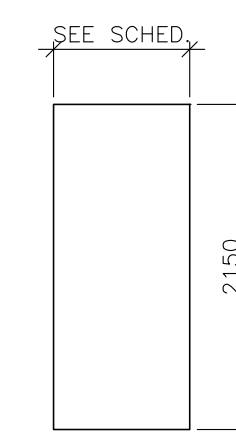
NOTES: REFERENCED TO DOOR SCHEDULE

1. DOOR PROVIDED BY ELEVATOR MANUFACTURER AS SPECIFICATION 14 24 23.26.
2. DOOR TO BE CONTINUOUS HINGE.
3. DOOR TO HAVE CONCEALED CLOSURE.

ALUMINUM WINDOW FRAMES

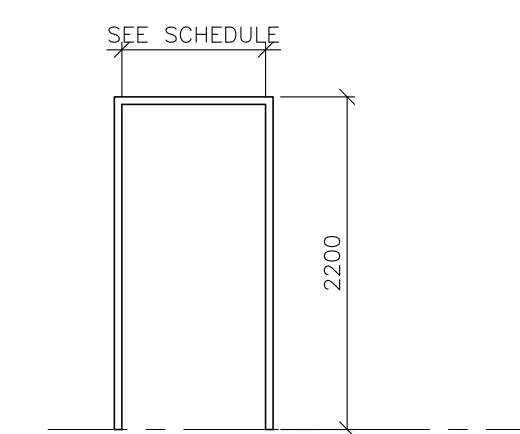


HOLLOW METAL DOOR TYPES



TYPE A

HOLLOW METAL DOOR FRAMES



TYPE HM 1

NOTE: FOR GLAZING TYPE REFER TO DOOR SCHEDULE

ROOM FINISH SCHEDULE - GROUND & SECOND FLOOR PLAN									
ROOM NAME	ROOM NUMBER	FLOOR	BASE 100mm	WALLS		CEILING			NOTES AND REMARKS
				MATERIAL	FINISH	MATERIAL	FINISH	HEIGHT	
ELEVATOR 101	101	CT-F	CT-F	-	-	-	-	-	SEE GENERAL NOTE 1
EXIST. CORRIDOR 102	102	EX. TERR/TERR.	EX. TERR/TERR.	EX. CB/CB	PT	EX. ACT/GB/GB	PT	VARIES	SEE GENERAL NOTE 1
EXIST. LIFT 103	103	VCT	RB	EX. CB	PT	ACT	-	2850	SEE GENERAL NOTE 1
ELEVATOR 201	201	CT-F	CT-F	-	-	-	-	-	SEE GENERAL NOTE 1
EXIST. CORRIDOR 202	102	EX. VCT/VCT	RB	EX. CB/CB	PT	EX. ACT/GB/GB	PT	VARIES	SEE GENERAL NOTE 1
EXIST. LIFT 203	203	VCT	RB	EX. CB	PT	ACT	-	2850	SEE GENERAL NOTE 1

DOOR ABBREVIATION

CT-F - PORCELAIN CERAMIC FLOOR TILE
VCT - VINYL COMPOSITION TILE
EX. TERR - EXISTING TERRAZZO FLOOR
TERR - TERRAZZO FLOOR
EX. CB - EXISTING CONCRETE BLOCK
CB - CONCRETE BLOCK
ACT - ACOUSTIC CEILING TILE
PT - PAINTED
GB - GYPSUM BOARD
RB - RESILIENT BASE

GENERAL NOTES

1. ALL ELEVATOR CAB FINISHES BY ELEVATOR MANUFACTURER, EXCEPT FINISHED FLOORING AND BASE BY SECTION 09 30 00 TILING, REFER TO ROOM FINISHES SCHEDULE.
2. ALL ROOMS WHERE THE FLOOR FINISH IS NOTED AS "VCT", PROVIDE MATCHING 100mm HIGH "RB" WALL BASE (UNLESS OTHERWISE DETAILED). ALL EXPOSED EDGES ARE TO BE FACTORY EDGE, NO EXPOSED CUT EDGES.

No.	DD/MM/YY	DESCRIPTION
1.	12/05/26	ISSUED FOR BUILDING PERMIT/TENDER

REVISIONS

SVEDAS / ARCHITECTS INC.

3600 BILLINGS COURT, SUITE 100
BURLINGTON, ONTARIO L7N 3N6 TEL. (905) 308-7771

ELEVATOR FOR ST. JEAN DE BREBEUF CATHOLIC SECONDARY SCHOOL

200 ACADIA DRIVE
HAMILTON ONTARIO

REFLECTED CEILING PLANS & SCHEDULES

SCALE	DRAWN	PROJECT No.
AS NOTED		125804
DATE	CHECKED	DRAWING No.
APRIL 30, 2026	MM	A4